

STATE OF VIRGINIA COUNTY OF YORK
IN THE CLERK'S OFFICE OF THE CIRCUIT COURT FOR THE
COUNTY OF YORK, THE DAY OF 1989, THIS
PLAT WAS PRESENTED AND ADMITTED TO RECORD AS THE LAW DIRECTS
IN PLAT BOOK PAGE

Filed in the Clerk's Office, Circuit Court, York Co., Va. SEE SHEET 1 FOR NOTES
the day of June 19 1989

VIRGINIA:
IN THE CLERK'S OFFICE OF THE CITY OF NEWPORT NEWS,
THE DAY OF 1989, THIS PLAT WAS PRESENTED
AND ADMITTED TO RECORD AS THE LAW DIRECTS IN PLAT BOOK
AT PAGE

Teste: Nancy B. Kane, Clerk
D.C.
Rachael K. Baraus

Plat Book No. 11 Page 479

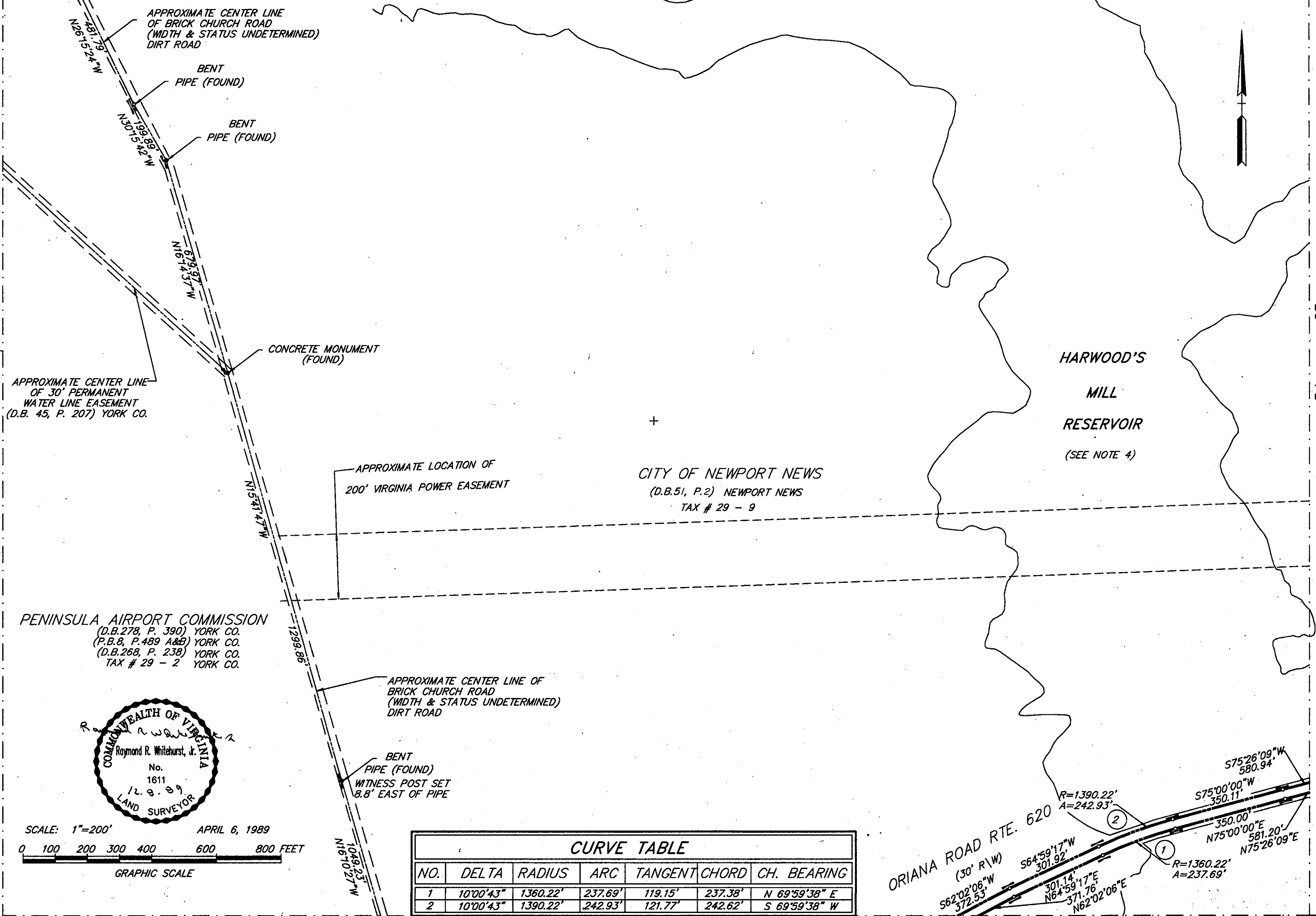
MATCH LINE - SEE SHEET 51 OF 63

TESTE: _____ CLERK
BY: _____ D.C.

TESTE: _____ CLERK

MATCH LINE - SEE SHEET 50 OF 63

MATCH LINE - SEE SHEET 54 OF 63



APPROXIMATE CENTER LINE
OF 30' PERMANENT
WATER LINE EASEMENT
(D.B. 45, P. 207) YORK CO.

CONCRETE MONUMENT
(FOUND)

APPROXIMATE LOCATION OF
200' VIRGINIA POWER EASEMENT

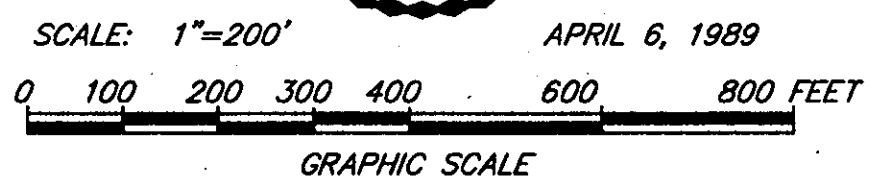
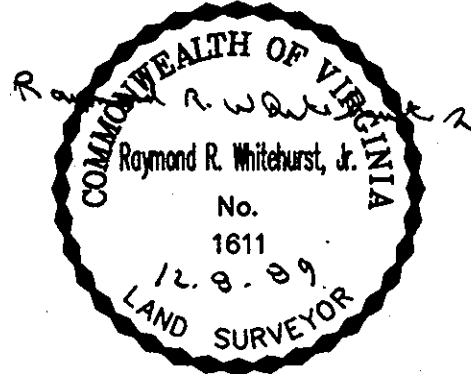
CITY OF NEWPORT NEWS
(D.B. 51, P. 2) NEWPORT NEWS
TAX # 29 - 9

HARWOOD'S
MILL
RESERVOIR
(SEE NOTE 4)

PENINSULA AIRPORT COMMISSION
(D.B. 278, P. 390) YORK CO.
(P.B. 8, P. 489 A&B) YORK CO.
(D.B. 268, P. 238) YORK CO.
TAX # 29 - 2 YORK CO.

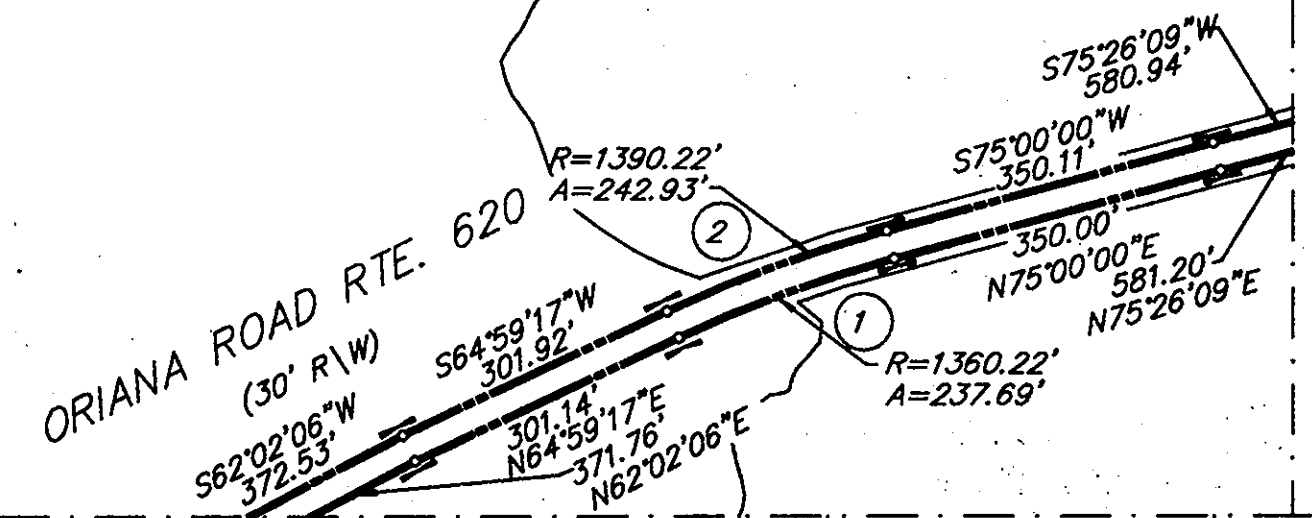
APPROXIMATE CENTER LINE OF
BRICK CHURCH ROAD
(WIDTH & STATUS UNDETERMINED)
DIRT ROAD

BENT
PIPE (FOUND)
WITNESS POST SET
8.8' EAST OF PIPE



CURVE TABLE

NO.	DELTA	RADIUS	ARC	TANGENT	CHORD	CH. BEARING
1	10°00'43"	1360.22'	237.69'	119.15'	237.38'	N 69°59'38" E
2	10°00'43"	1390.22'	242.93'	121.77'	242.62'	S 69°59'38" W



MATCH LINE - SEE SHEET 55 OF 63

DWG. NO. 90-C-11
DWG. FILE NO. HA-1457 (SHEET 53 OF 63)
PRINT FILE NO. N-8141

MATCH LINE - SEE SHEET 56 OF 63