

STATE OF VIRGINIA COUNTY OF YORK
IN THE CLERK'S OFFICE OF THE CIRCUIT COURT FOR THE
COUNTY OF YORK, THE DAY OF 1989, THIS
PLAT WAS PRESENTED AND ADMITTED TO RECORD AS THE LAW DIRECTS
IN PLAT BOOK PAGE

SEE SHEET 1 FOR NOTES

Filed in the Clerk's Office, Circuit Court, York Co., Va.
the 2nd day of June 1989

VIRGINIA:
IN THE CLERK'S OFFICE OF THE CITY OF NEWPORT NEWS,
THE DAY OF 1989, THIS PLAT WAS PRESENTED
AND ADMITTED TO RECORD AS THE LAW DIRECTS IN PLAT BOOK
AT PAGE

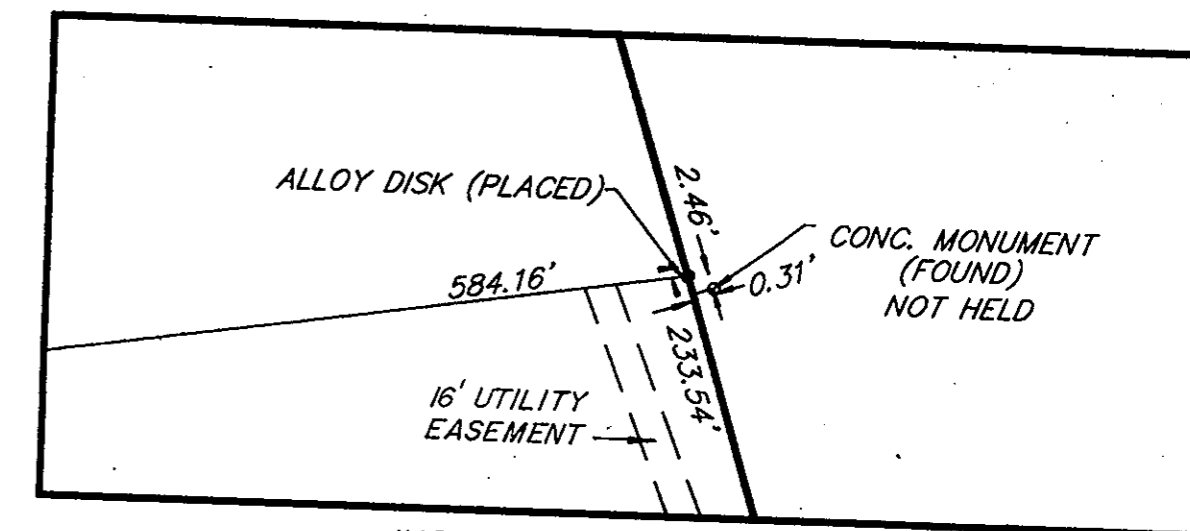
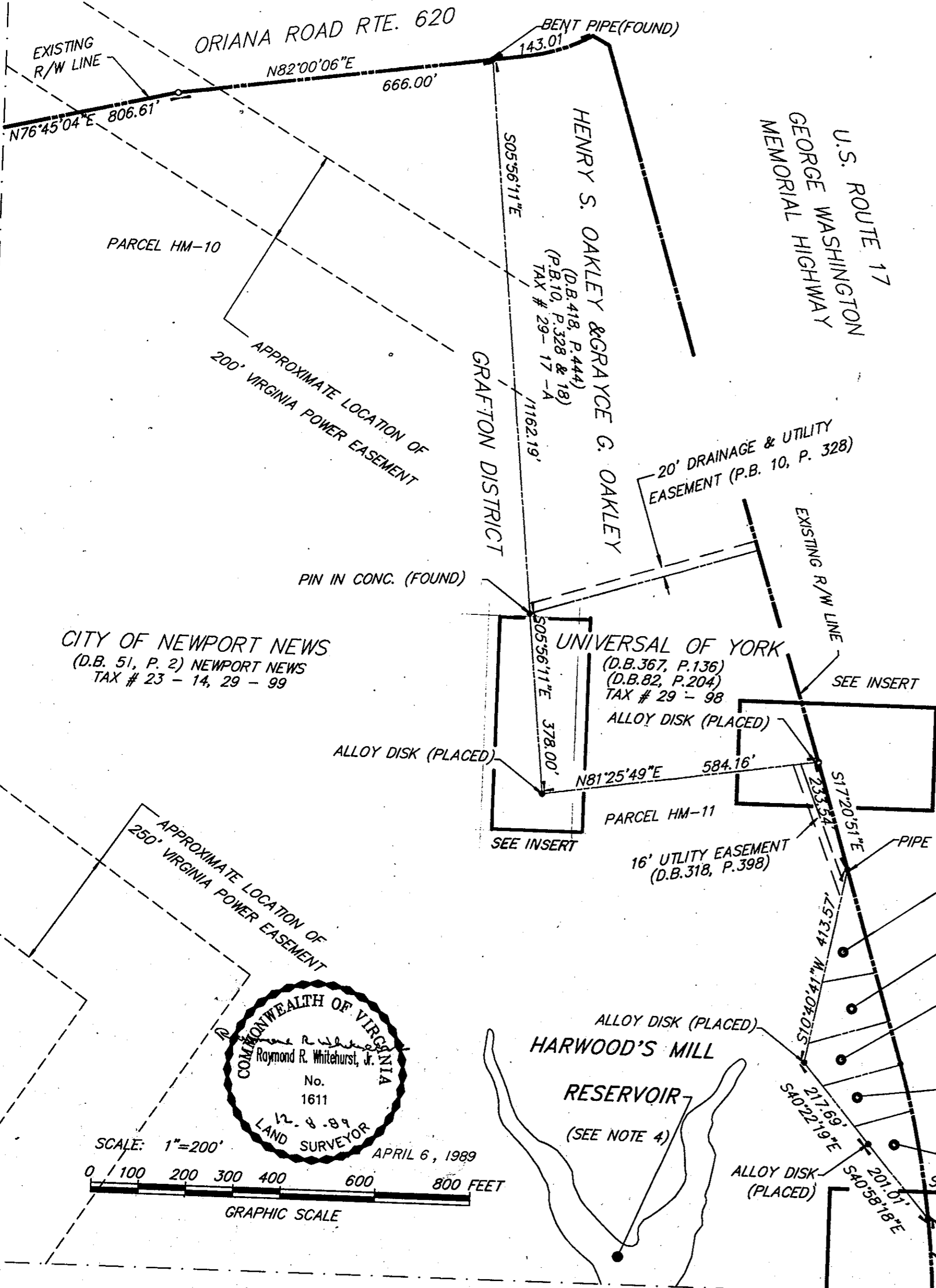
MATCH LINE - SEE
SHEET 54 OF 63

TESTE: _____ CLERK
BY: _____ D.C.

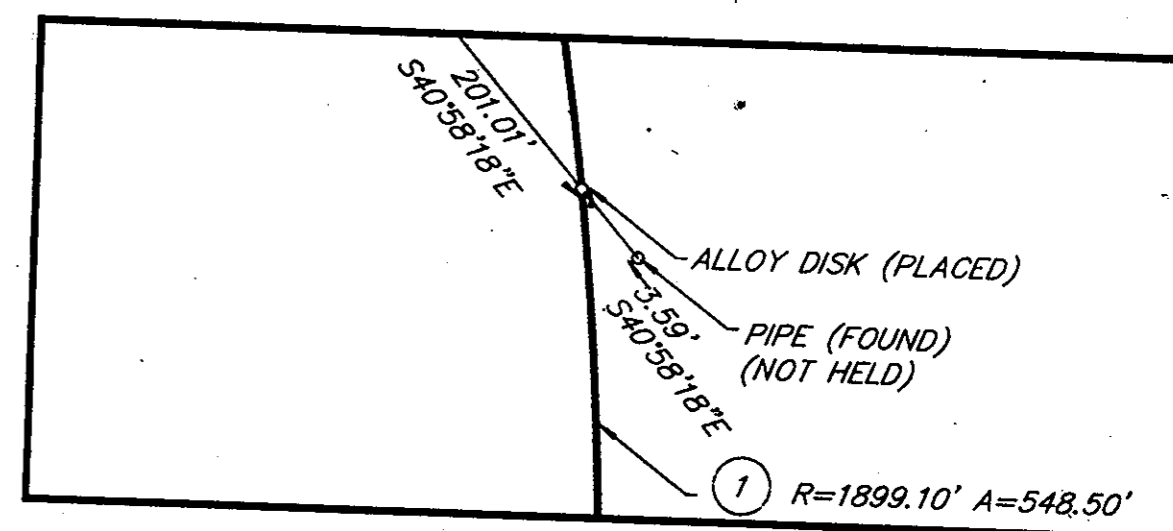
Teste: Nancy B. Kane, Clerk
Plat Book No. 11 Page 483

TESTE: _____ CLERK

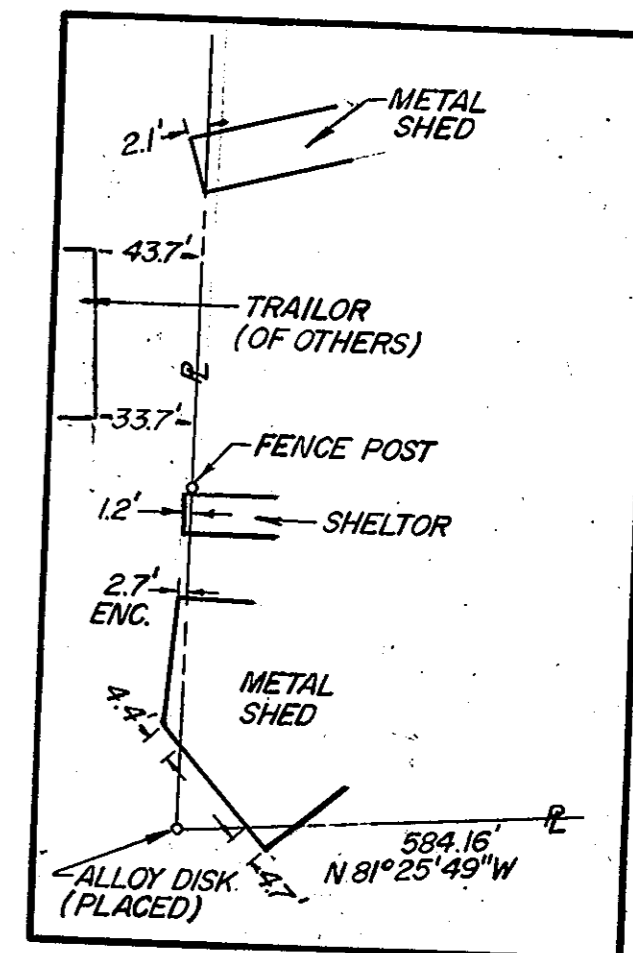
CURVE TABLE						
NO.	DELTA	RADIUS	ARC	TANGENT	CHORD	CH. BEARING
1	16°32'54"	1899.10'	548.50'	276.17'	546.60'	S 00°53'15" W



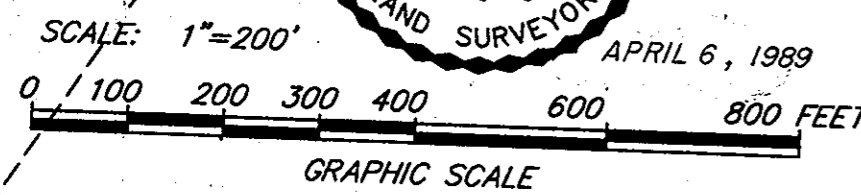
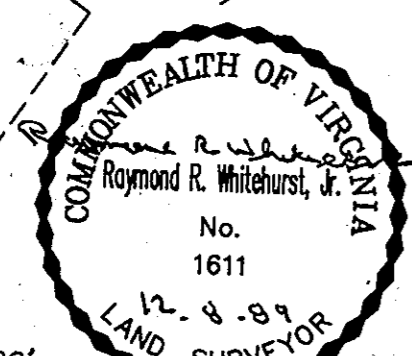
INSERT - NOT TO SCALE



INSERT - NOT TO SCALE



INSERT - NOT TO SCALE



MATCH LINE - SEE SHEET 60 OF 63

DWG. NO. 90-C-11
DWG. FILE NO. HA-1457
PRINT FILE NO. N-8141

(SHEET 57 OF 63)