

WILLIAMS, TAZEWELL AND ASSOCIATES
 Architecture Engineering Planning Interiors
 Norfolk, Virginia 23517
 710 West 21st Street

BUILDING 8

Units listed below will be addressed as follows:
 (Insert Unit #) Ironwood Drive

Unit No.	Lower Boundary Elevation*	Upper Boundary Elevation**
811	34.6	Varies 42.64-43.55
812	34.6	Varies 42.64-43.55
813	34.6	Varies 42.64-43.55
814	34.6	Varies 42.64-43.55
815	34.6	Varies 42.64-43.55
816	34.6	Varies 42.64-43.55
821	44.98	Varies 53.04-55.04
822	44.98	Varies 53.04-55.04
823	44.98	Varies 53.04-55.04
824	44.98	Varies 53.04-55.04
825	44.98	Varies 53.04-55.04
826	44.98	Varies 53.04-55.04

* Note: The numerical value given as the lower boundary of each unit is the elevation of the horizontal plane of the upper surface of the gypsum-concrete floor topping of the unit.

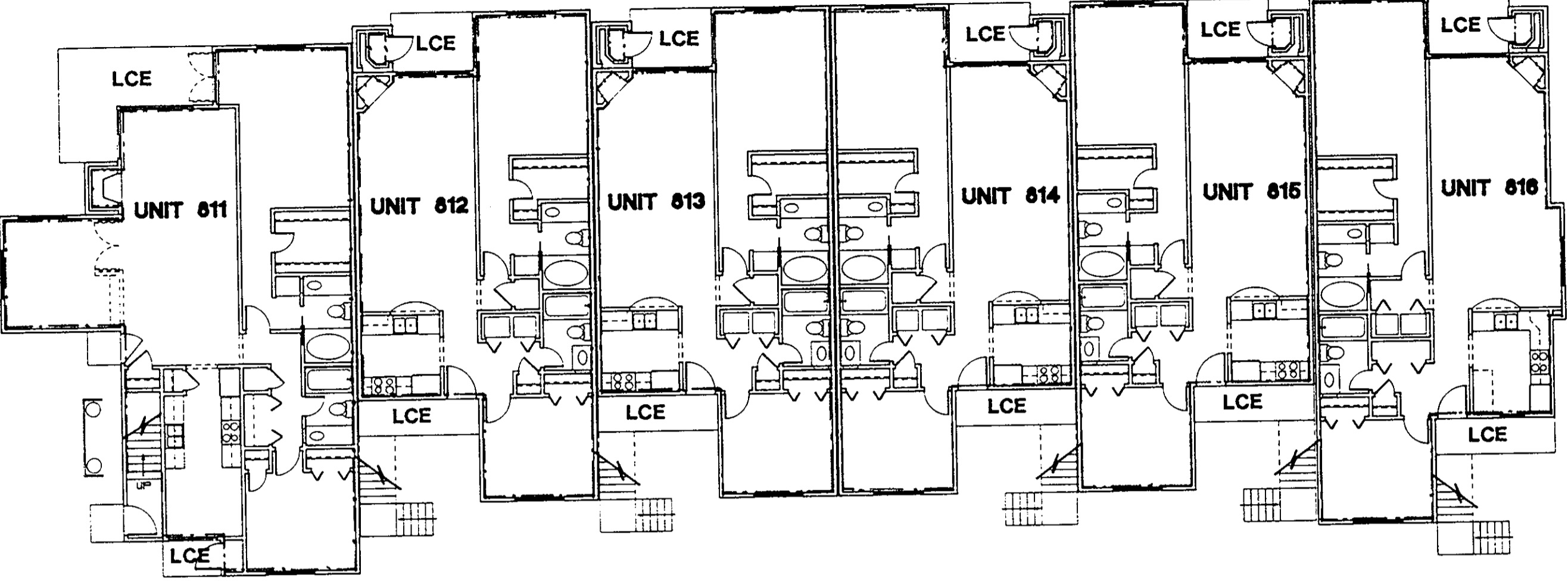
** Note: The numerical value given as the upper boundary of each unit is the elevation of the horizontal plane(s) of the upper (covered) surface of the gypsum board (or other material) constituting the exposed ceiling of the unit.

ARCHITECT'S CERTIFICATE

I hereby certify that this is a correct and accurate plan, that this plan is in compliance with Virginia Code Ann. Subsections 55-79.58 (b) and (e), and that the units depicted hereon have been substantially completed.

[Signature]
 Robert A. Mageon Jr., AIA

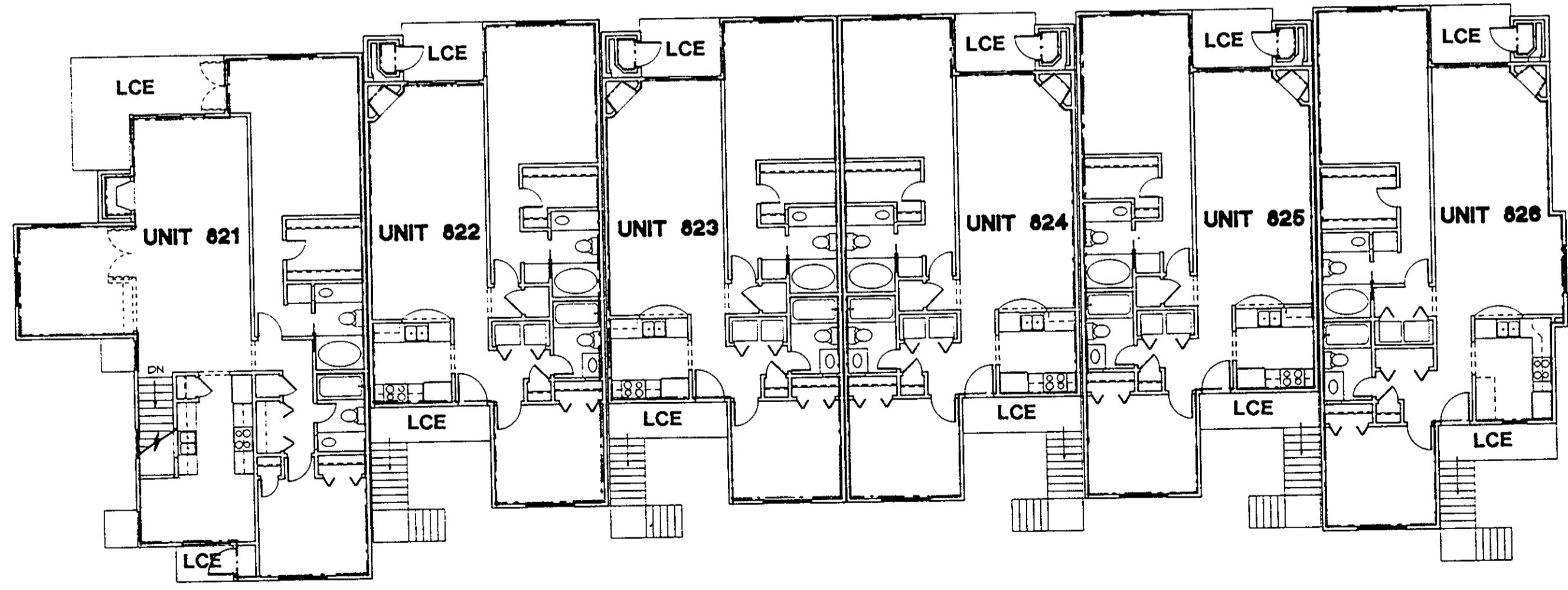
12/17/02
 Date



1ST FLOOR PLAN - BUILDING 8 UNITS 811-816
 1/8" = 1'-0"

NOTE:
 SEE UNIT FLOOR PLANS FOR MORE DETAILED BOUNDARY AND COMMON ELEMENT INFORMATION

LEGEND
 S.B. - SIDE (PERIMETER) BOUNDARY
 LCE - LIMITED COMMON ELEMENT
 CE - COMMON ELEMENT



2ND FLOOR PLAN - BUILDING 8 UNITS 821-826
 1/8" = 1'-0"

Flat Book No. 11 Page 555
 Filed in the Clerk's Office, Circuit Court, York Co., Va.
 the 18th day of December, 1902
 Teste: *[Signature]* 8:33 AM
 Nancy B. Kane, Clerk
[Signature] D.C.

NO.	DATE	REVISIONS	BY

Plat of Condominium
EAGLE SOUND AT KILN CREEK
YORK COUNTY, VIRGINIA
EXHIBIT A-3
PHASE EIGHT