

Filed in the Clerk's Office, Circuit Court, York Co., Va.  
the 19<sup>th</sup> day of May 1993

Teste: Nancy B. Kere, Clerk  
Date: 11.15  
Plat BK 611 page 611 D.C.

ARCHITECT'S CERTIFICATE

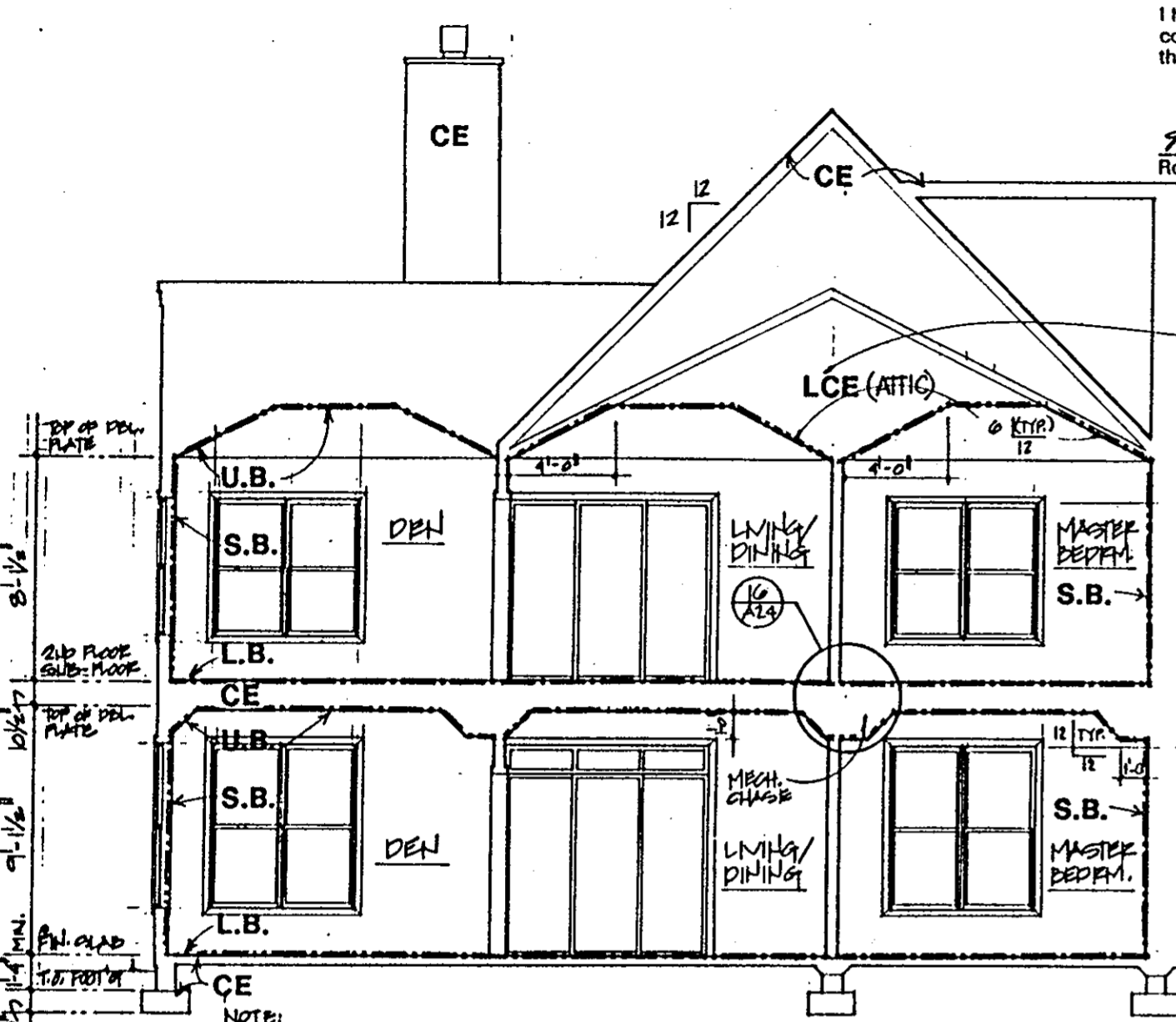
I hereby certify that this is a correct and accurate plan, that this plan is in compliance with Virginia Code Ann. Subsections 55-79.58 (b) and (e), and that the units depicted hereon have been substantially completed.

Robert A. Magoon Jr., P.E.  
Date: 5/10/93

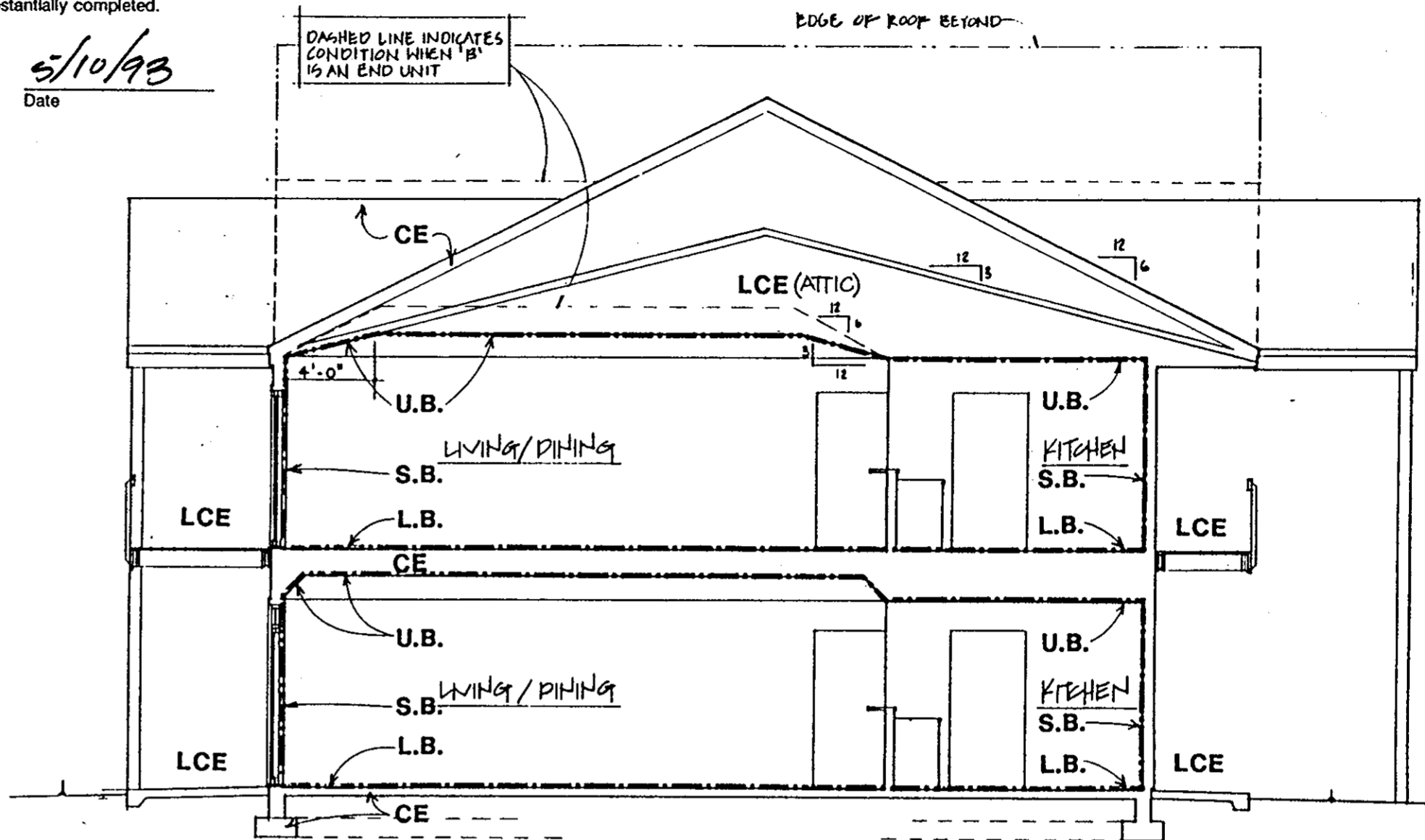
Date

DASHED LINE INDICATES CONDITION WHEN 'B' IS AN END UNIT

EDGE OF ROOF BEYOND



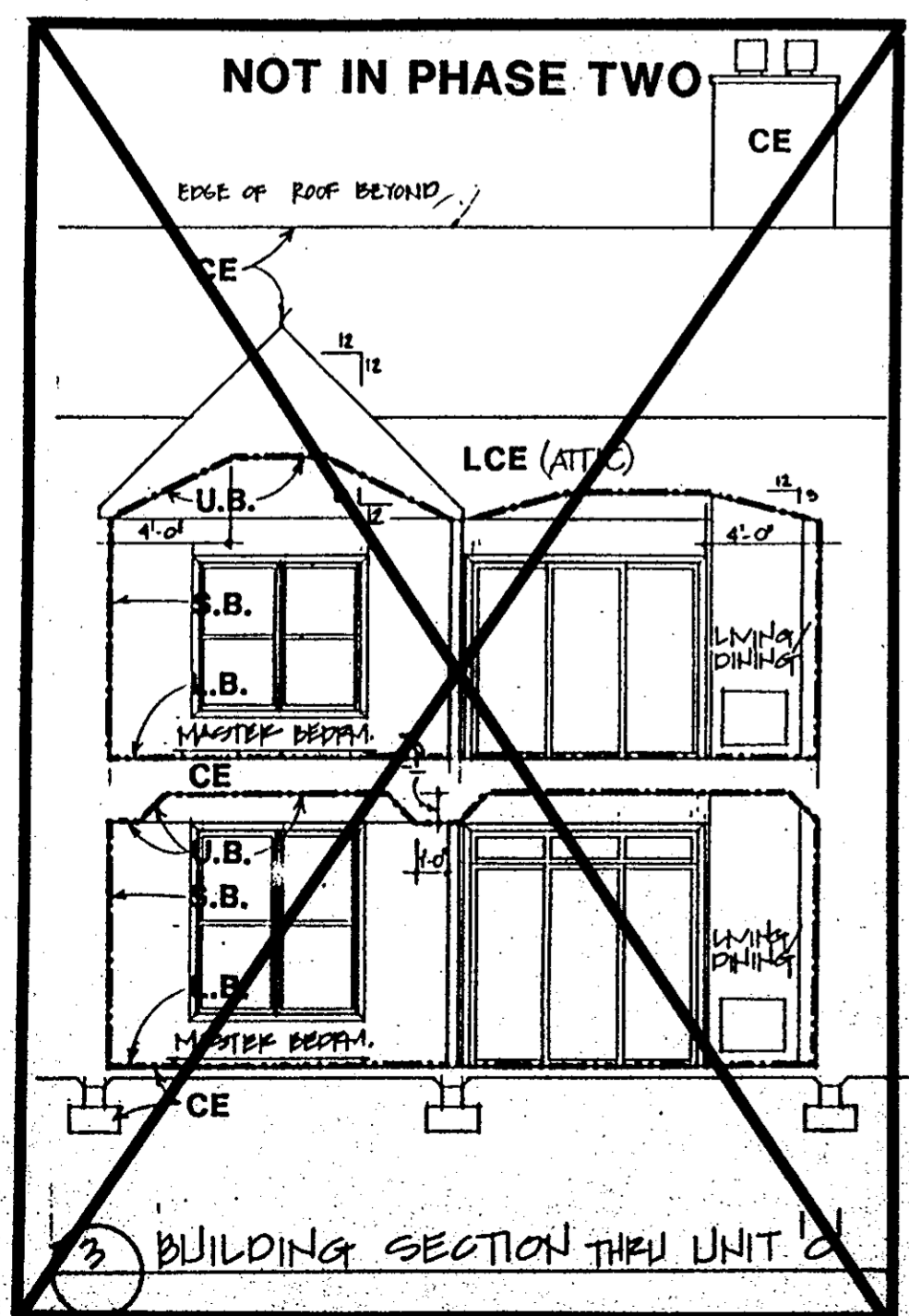
TRUSS CONFIGURATION TO ACHIEVE VAULTED CEILINGS OR PROVIDE ADDITIONAL FRAMING AS REQ'D.  
HEAD OF WINDOWS EXTERIOR ROOFS  
TOP OF CONCRETE  
HEAD OF WINDOWS & TRUSS ABOVE EXTERIOR ROOFS  
MIN. CONG. SLAB



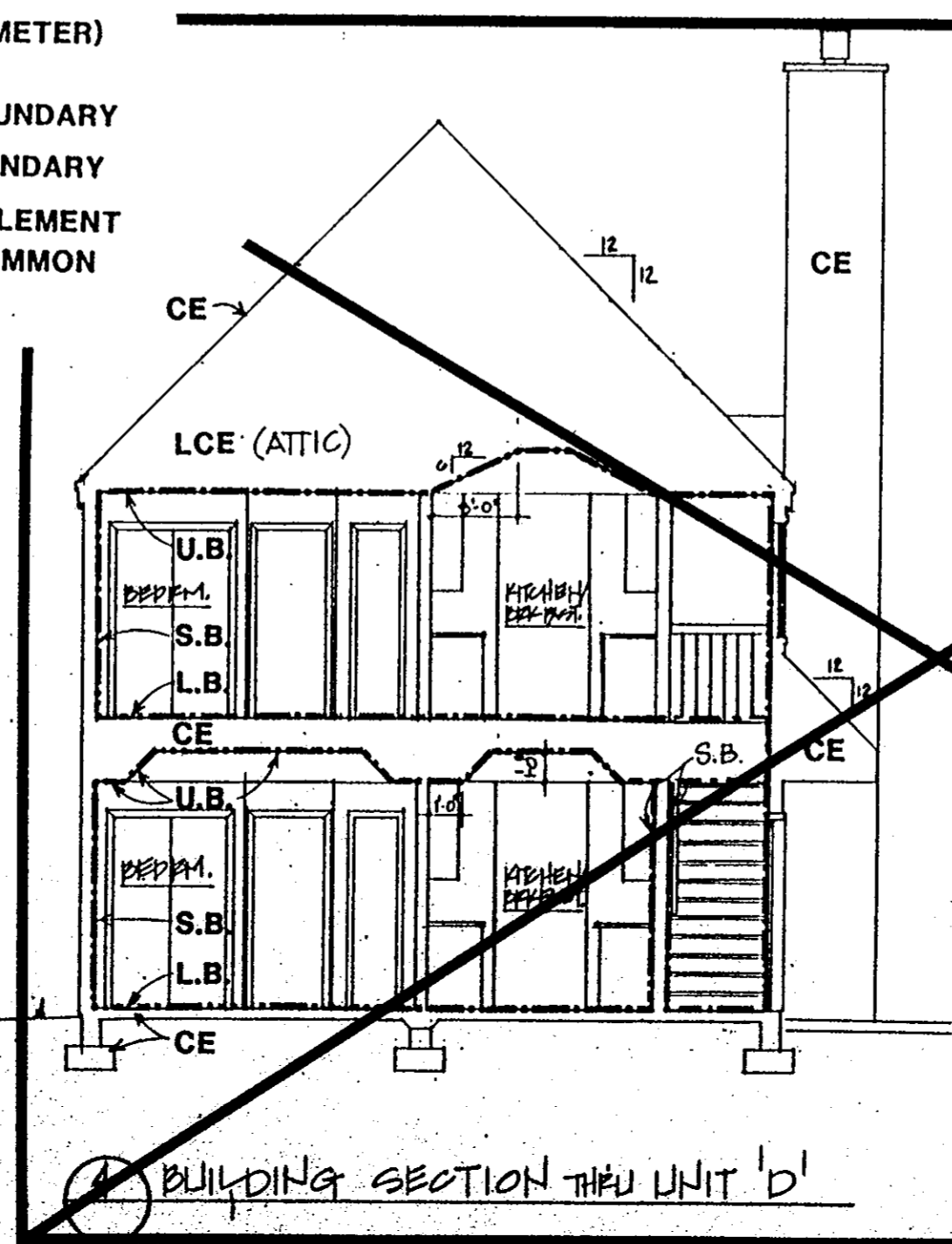
1 BUILDING SECTION THRU UNIT 'A'

2 BUILDING SECTION THRU UNIT 'B'

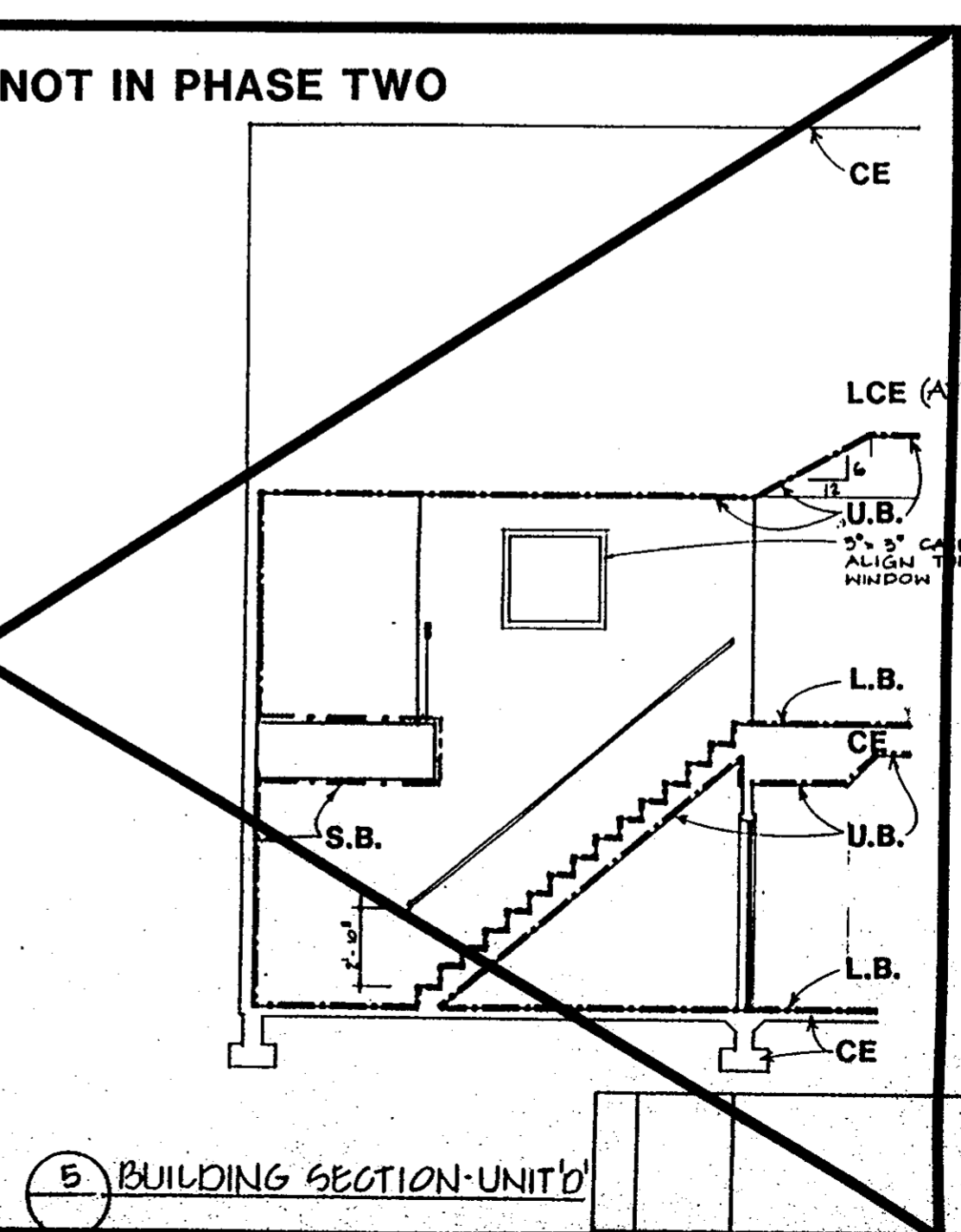
- LEGEND:  
S.B. - SIDE (PERIMETER) BOUNDARY  
L.B. - LOWER BOUNDARY  
U.B. - UPPER BOUNDARY  
CE - COMMON ELEMENT  
LCE - LIMITED COMMON ELEMENT



3 BUILDING SECTION THRU UNIT 'C'



4 BUILDING SECTION THRU UNIT 'D'



5 BUILDING SECTION THRU UNIT 'E'

WILLIAMS, TAZEWELL AND ASSOCIATES  
Architecture Engineering Planning Interiors  
710 West 21st Street,  
Norfolk, Virginia 23517

Plat of Condominium  
EAGLE SOUND AT KILN CREEK  
YORK COUNTY, VIRGINIA

EXHIBIT  
A-3  
PHASE TWO

File  
Date  
Sheet  
5 OF 5