

GRAFTON WOODS

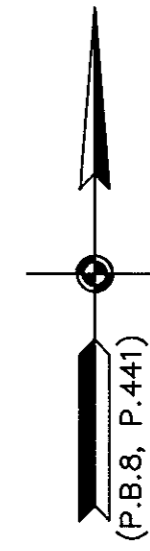
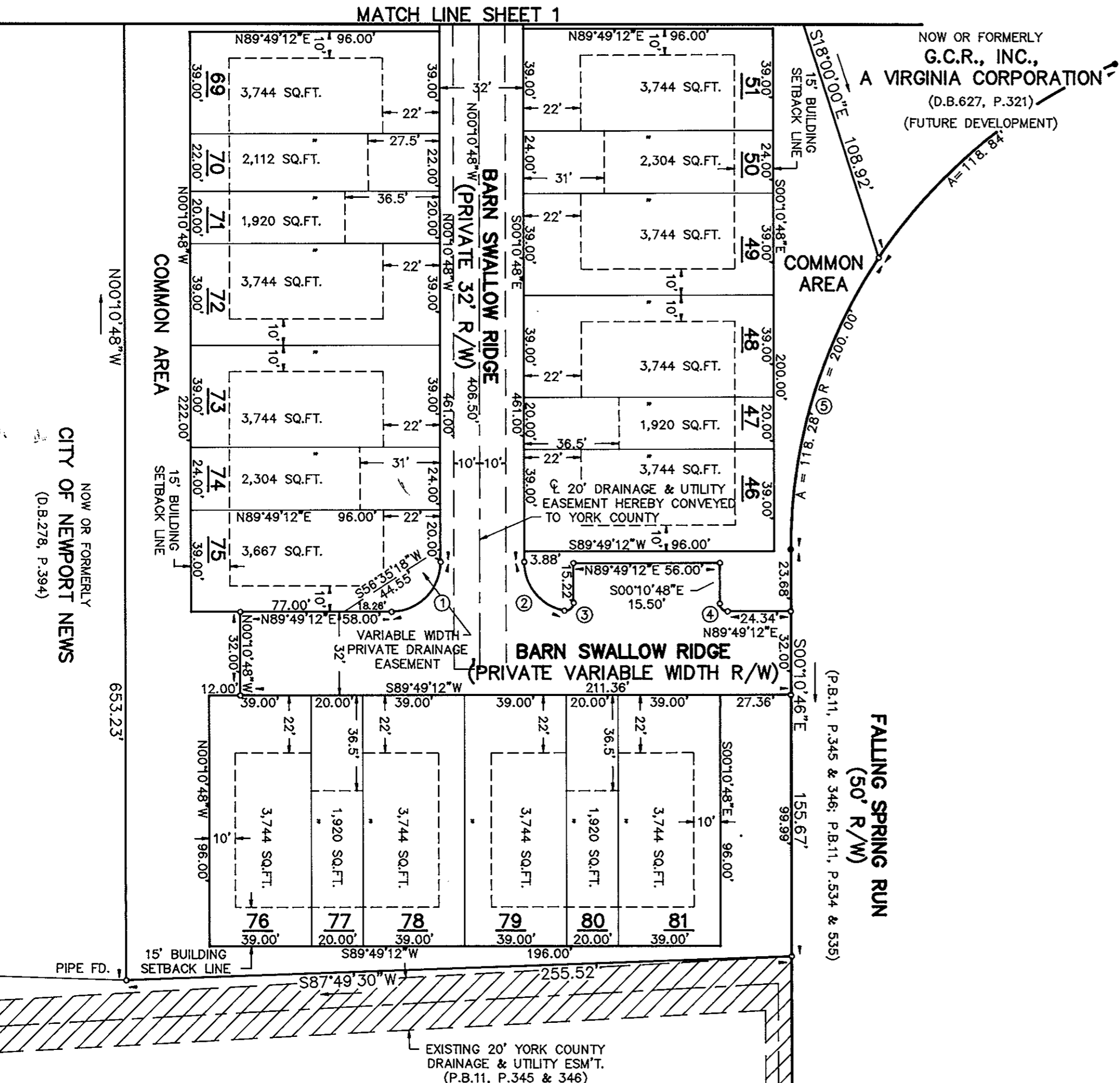
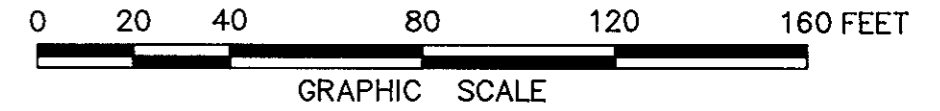
SECTION NINE

GRAFTON DISTRICT - COUNTY OF YORK, VIRGINIA

THE SIRINE GROUP, LTD.
 SURVEYORS • ENGINEERS • PLANNERS
 P.O. BOX 450, ROUTE 17
 WHITE MARSH, VIRGINIA 23183

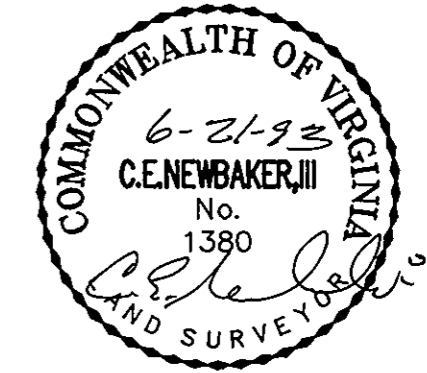
SCALE: 1" = 40' APRIL 22, 1993

SHEET 2 OF 2



CURVE TABLE

NO.	RADIUS	DELTA	ARC	TANGENT	CHORD	CHORD BRG.
1	19.00'	90°00'00"	29.85'	19.00'	26.87'	N44°49'12"E
2	19.00'	79°17'32"	26.29'	15.74'	24.25'	S39°49'34"E
3	3.00'	100°42'28"	5.27'	3.62'	4.62'	N50°10'26"E
4	3.00'	90°00'00"	4.71'	3.00'	4.24'	S45°10'48"E
5	200.00'	33°53'08"	118.28'	60.93'	116.57'	S16°45'46"W



APPROVED:
 YORK COUNTY BOARD OF SUPERVISORS
 BY: Mark Carter
 PLAT APPROVING AGENT
 DATE: JUNE 28, 1993

STATE OF VIRGINIA
 COUNTY OF YORK
 IN THE CLERK'S OFFICE OF THE CIRCUIT COURT FOR
 THE COUNTY OF YORK THE 29th DAY OF June,
 1993, THIS PLAT WAS PRESENTED AND ADMITTED TO
 RECORD AS THE LAW DIRECTS IN PLAT BOOK 11
 PAGE 618. 09:48 am
 TESTE: NANCY B. KANE, CLERK
 CLERK
 BY: Karen D. Kelgh Watters, DC.

PROPERTY IS A PORTION OF ASSESSOR'S PARCEL
 NUMBERS 29-6, 6A AND 7.