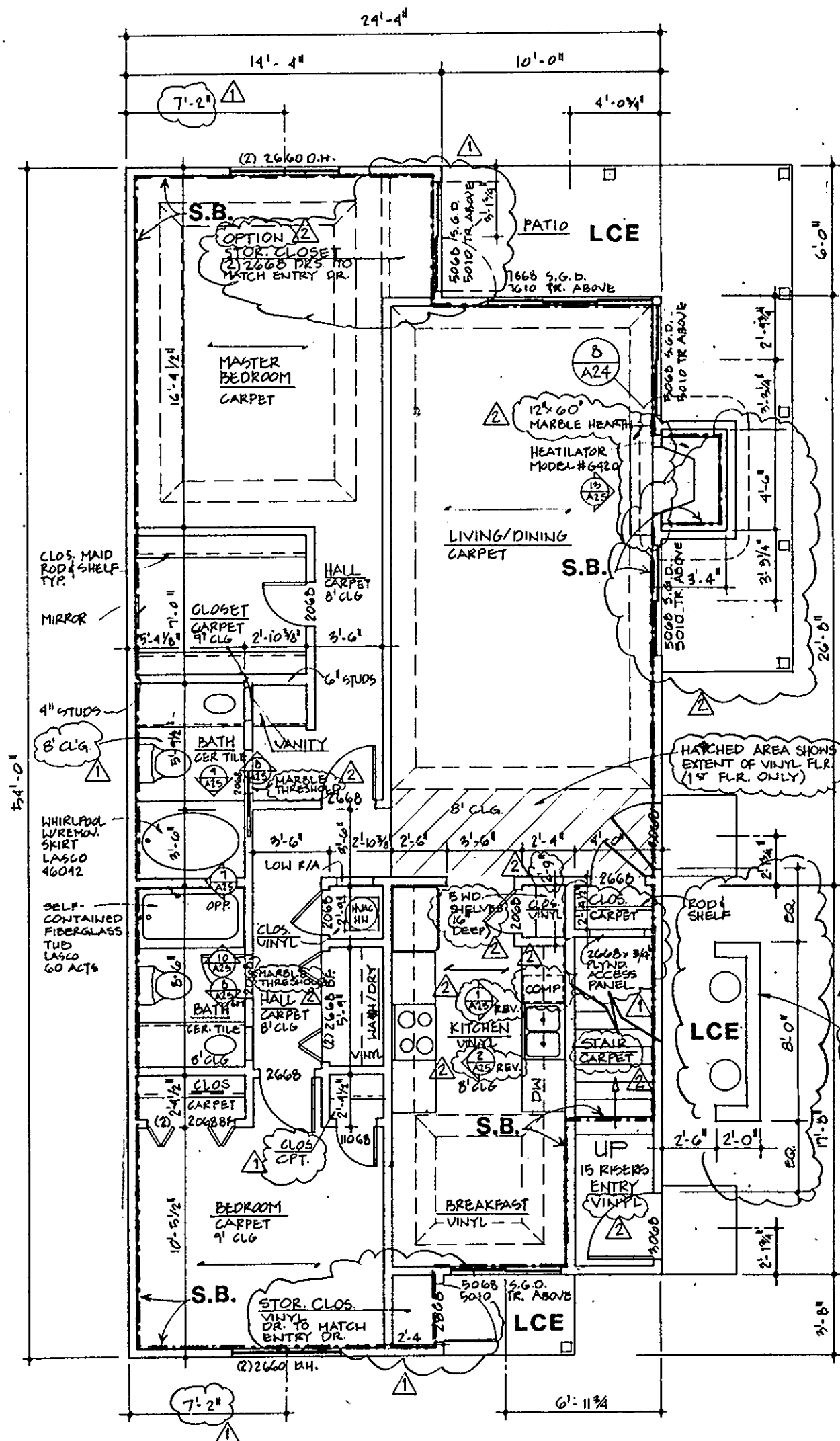
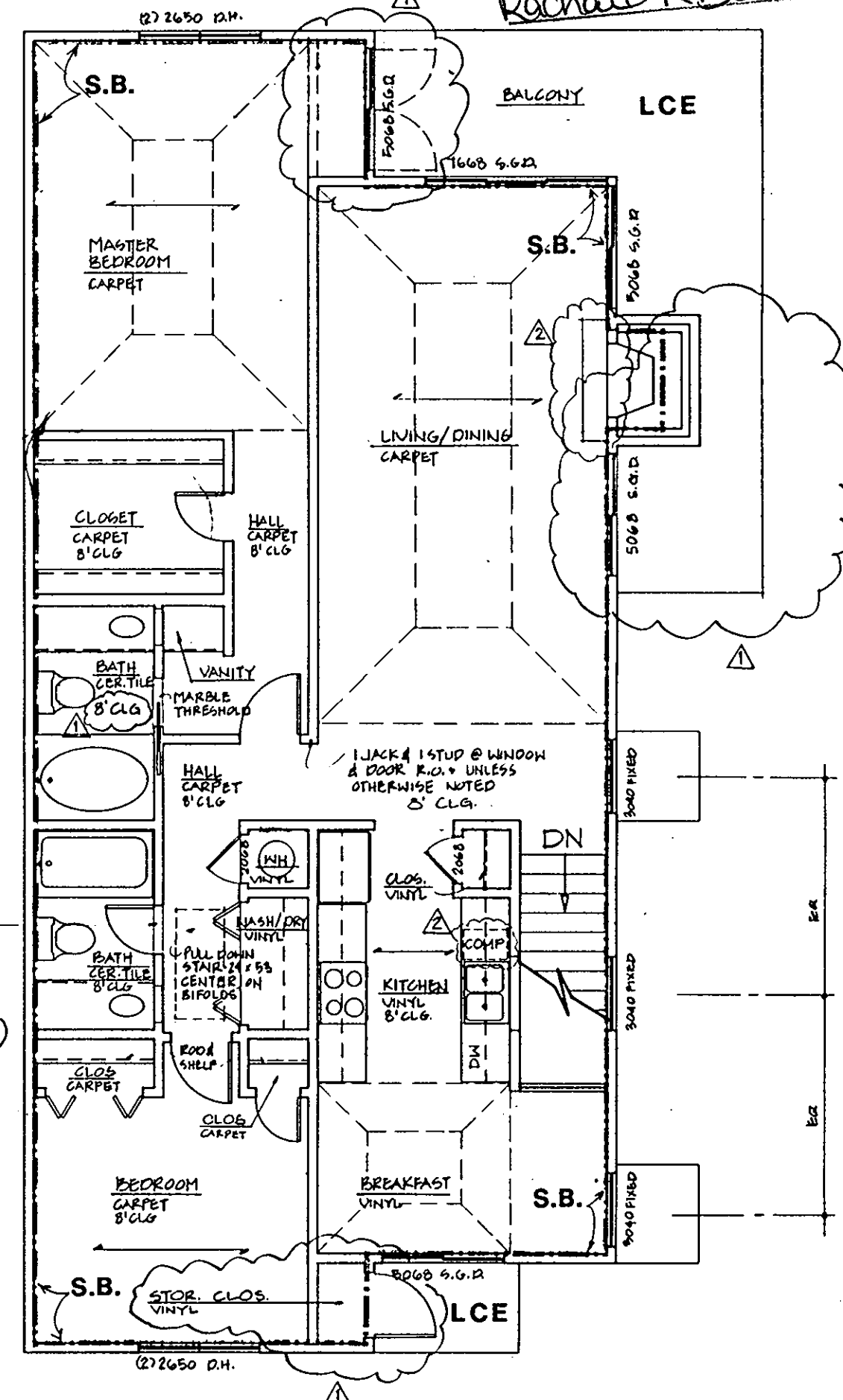


Plat Book No. 11 Page 649
 Filed in the Clerk's Office, Circuit Court, York Co., Va.
 this 24 day of August 1993
 Teste: Nancy B. Fano, Clerk
Richard R. Davis D.C.



FIRST FLR. PLAN - UNIT 'D'
 1/4" = 1'-0"



SECOND FLR. PLAN - UNIT 'D'
 1/4" = 1'-0"

WILLIAMS, TAZEWELL AND ASSOCIATES
 Architecture Engineering Planning Interiors
 710 West 21st Street,
 Norfolk, Virginia 23517

Plat of Condominium
 EAGLE SOUND AT KILN CREEK
 YORK COUNTY, VIRGINIA

EXHIBIT
 A-3
 PHASE
 SEVEN

ARCHITECT'S CERTIFICATE

I hereby certify that this is a correct and accurate plan, that this plan is in compliance with Virginia Code Ann. Subsections 55-79.58 (b) and (e), and that the units depicted hereon have been substantially completed.

Robert A. Magoon Jr.
 Robert A. Magoon Jr., AIA
 8/18/93
 Date

LEGEND:
 S.B. - SIDE (PERIMETER) BOUNDARY
 LCE - LIMITED COMMON ELEMENT
 CE - COMMON ELEMENT

NO.	DATE	REVISIONS	BY
1	10/26/91	ADDENDA REVISION	RAM

File
 Date
 Sheet
 4 of 7