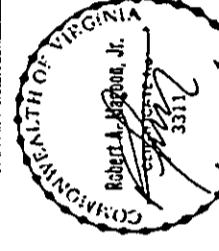


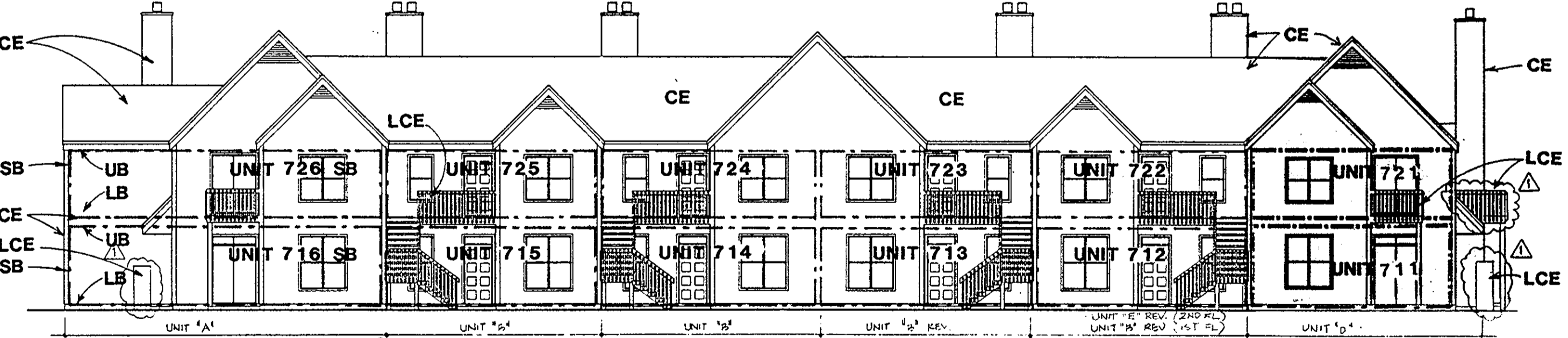
ARCHITECT'S CERTIFICATE

I hereby certify that this is a correct and accurate plan, that this plan is in compliance with Virginia Code Ann. Subsections 55-79.58 (b) and (c), and that the units depicted thereon have been substantially completed.

[Signature]
 Robert A. Magoon Jr., AIA
 Date 8/18/93

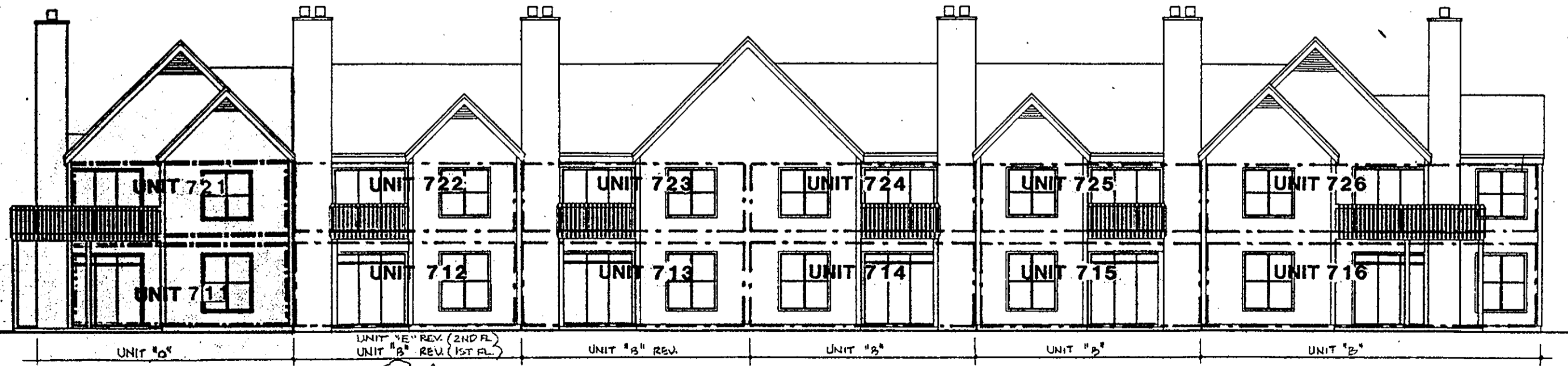


WILLIAMS, TAKEWELL AND ASSOCIATES
 Architecture Engineering Planning Interiors
 710 West 21st Street,
 Norfolk, Virginia 23517



- LEGEND:**
- S.B. - SIDE (PERIMETER) BOUNDARY
 - L.B. - LOWER BOUNDARY
 - U.B. - UPPER BOUNDARY
 - CE - COMMON ELEMENT
 - LCE - LIMITED COMMON ELEMENT

NOTE: BOUNDARY AND COMMON ELEMENT DESIGNATIONS SHOWN FOR BUILDING 7 ARE TYPICAL FOR ALL ELEVATIONS



Plat Book No. 11 Page 650
 Filed in the Clerk's Office, Circuit Court, York Co., Va.
 the 2 day of August 1993
 Teste: *[Signature]* Nancy B. Kane, Clerk
[Signature] D.C.

NO.	DATE	REVISIONS
△	10/26/91	ADDENDA
△	12/0/91	REVISION

Plat of Condominium
EAGLE SOUND AT KILN CREEK
 YORK COUNTY, VIRGINIA

EXHIBIT A-3 PHASE SEVEN