

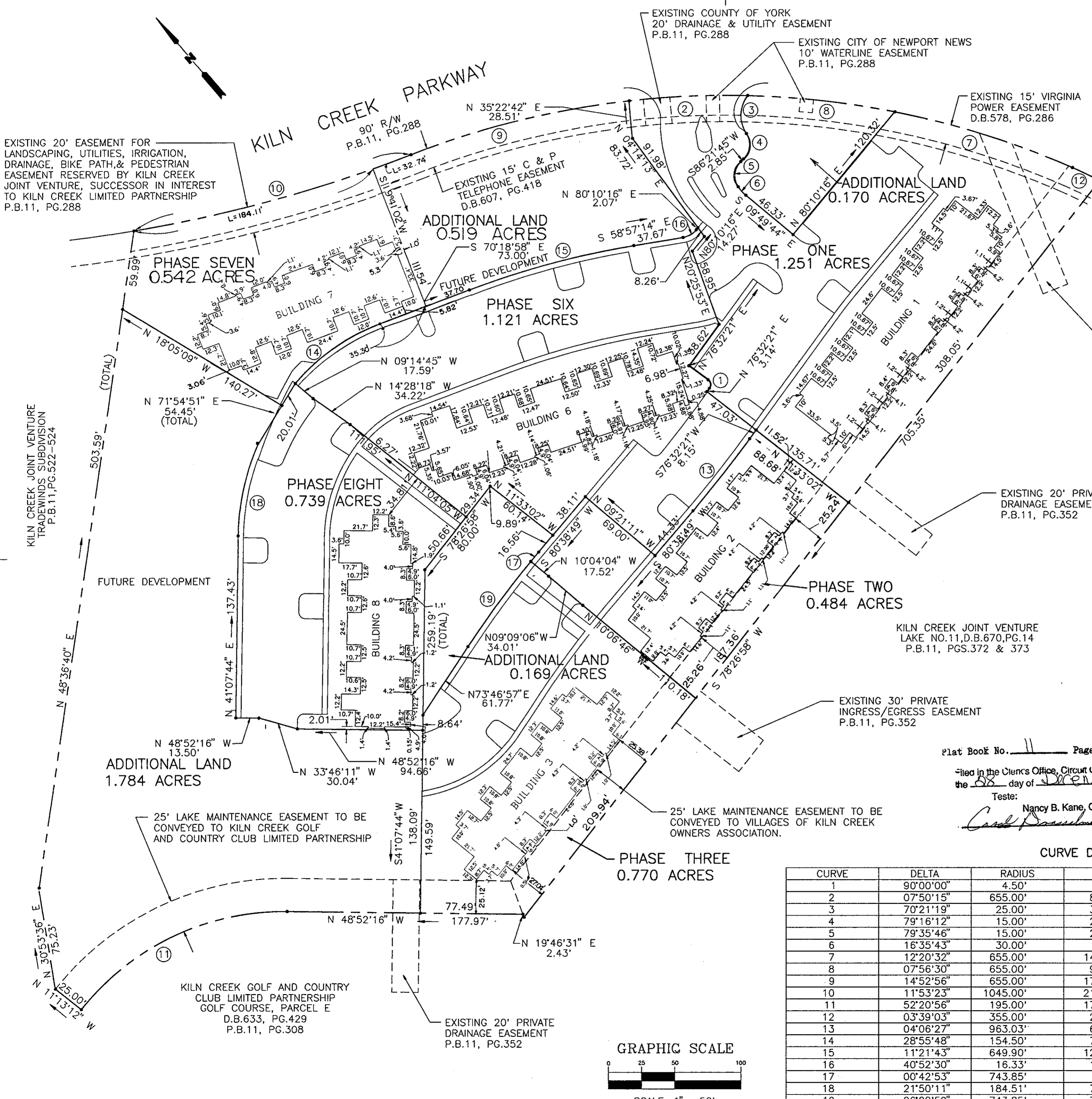
PLAT OF CONDOMINIUM
EAGLE SOUND
 AT KILN CREEK
 A CONDOMINIUM
 PHASE THREE
 THE VILLAGES OF KILN CREEK
 COUNTY OF YORK, VIRGINIA

DATE: DEC.22, 1993 SHEET 2 OF 2 SCALE: 1" = 50'



SLEDD, RUNEY & ASSOCIATES, P.C.
 ENGINEERS PLANNERS SURVEYORS
 11832 ROCK LANDING DRIVE, SUITE 203
 NEWPORT NEWS, VIRGINIA 23606
 (804) 873-3386

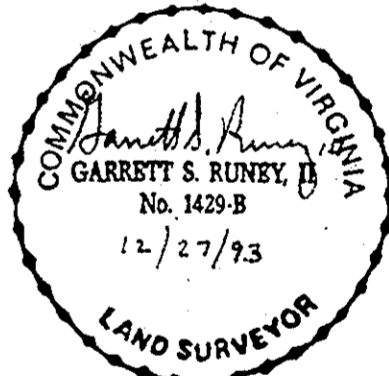
EXHIBIT A-2



AREA TABULATIONS

PHASE 1	1.251 AC.
PHASE 2	0.484 AC.
PHASE 3	0.770 AC.
PHASE 6	1.121 AC.
PHASE 7	0.542 AC.
PHASE 8	0.739 AC.
ADDITIONAL LAND	2.642 AC.
TOTAL AREA OF SITE	7.549 AC.

PARKING TABULATION
 178 TOTAL SPACES



Plat Book No. 11 Page 1094
 Filed in the Clerk's Office, Circuit Court, York Co., Va.
 the 28 day of December 1993
 Teste:
 Nancy B. Kane, Clerk
Carol P. ... D.C.

A COPY TESTE
NANCY B. KANE
 CLERK CIRCUIT COURT
 COUNTY OF YORK, VA.
Richard D. ...
 D.C.

CURVE DATA TABLE

CURVE	DELTA	RADIUS	LENGTH	TANGENT	CHORD	BEARING
1	90°00'00"	4.50'	7.07'	4.50'	6.36'	N 31°32'21" E
2	07°50'15"	655.00'	89.60'	44.87'	89.53'	S 52°00'55" E
3	70°21'19"	25.00'	30.70'	17.62'	28.81'	S 42°16'12" W
4	79°16'12"	15.00'	20.75'	12.42'	19.14'	N 46°43'39" E
5	79°35'46"	15.00'	20.84'	12.50'	19.20'	S 46°33'51" W
6	16°35'43"	30.00'	8.69'	4.38'	8.66'	S 01°35'01" E
7	12°20'32"	655.00'	141.10'	70.82'	140.82'	N 32°07'27" W
8	07°56'30"	655.00'	90.79'	45.47'	90.72'	N 42°15'58" W
9	14°52'56"	655.00'	170.13'	85.55'	169.65'	N 63°22'30" W
10	11°53'23"	1045.00'	216.85'	108.82'	216.46'	S 64°52'16" E
11	52°20'56"	195.00'	178.16'	95.84'	172.03'	N 75°02'44" W
12	03°39'03"	355.00'	22.62'	11.31'	22.62'	S 24°07'40" E
13	04°06'27"	963.03'	69.04'	34.54'	69.03'	N 78°35'35" E
14	28°55'48"	154.50'	78.01'	39.86'	77.18'	N 84°46'51" W
15	11°21'43"	649.90'	128.88'	64.65'	128.67'	N 64°38'06" W
16	40°52'30"	16.33'	11.65'	6.09'	11.41'	S 79°23'29" E
17	00°42'53"	743.85'	9.28'	4.64'	9.28'	N 80°17'22" E
18	21°50'11"	184.51'	70.32'	35.59'	69.89'	N 52°29'43" E
19	06°08'59"	743.85'	79.84'	39.96'	79.80'	N 76°51'26" E

