

CURVE TABLE CONTINUED FROM SHEET 1 OF 3

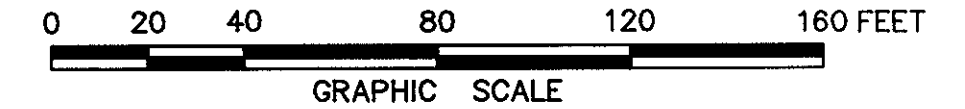
NO.	RADIUS	DELTA	ARC	TANGENT	CHORD	CHORD BRG.
8	200.00'	23°05'03"	80.58'	40.84'	80.04'	N41°00'42"W
9	374.00'	12°28'59"	81.48'	40.90'	81.32'	N35°42'40"W
10	15.00'	90°00'00"	23.56'	15.00'	21.21'	N86°57'10"W
11	20.00'	87°25'02"	30.51'	19.12'	27.64'	S73°10'42"E
12	25.00'	98°18'26"	42.89'	28.92'	37.82'	N13°57'34"E
13	450.00'	36°33'20"	287.11'	148.63'	282.26'	N44°50'07"E
14	20.00'	87°35'32"	30.58'	19.18'	27.68'	N14°19'35"E
15	200.00'	12°28'59"	43.57'	21.87'	43.49'	N35°42'40"W
16	15.00'	90°00'00"	23.56'	15.00'	21.21'	N86°57'10"W
17	15.00'	90°00'00"	23.56'	15.00'	21.21'	S03°02'50"W
18	400.00'	12°28'59"	87.16'	43.75'	86.98'	S35°42'40"E
19	174.00'	23°05'03"	70.10'	35.53'	69.63'	S41°00'42"E
20	20.00'	88°42'38"	30.96'	19.55'	27.96'	N83°05'27"E
21	1174.08'	06°12'41"	127.29'	63.70'	127.22'	S32°05'19"E

GLEN LAUREL SECTION ONE (P.B.11, P.677)

GRAFTON DISTRICT - COUNTY OF YORK, VIRGINIA

THE SIRINE GROUP, LTD.
 SURVEYORS • ENGINEERS • PLANNERS
 P.O. BOX 450, ROUTE 17
 WHITE MARSH, VIRGINIA 23183

SCALE: 1" = 40' FEBRUARY 2, 1994
SHEET 2 OF 3



APPROVED:
 YORK COUNTY BOARD OF SUPERVISORS

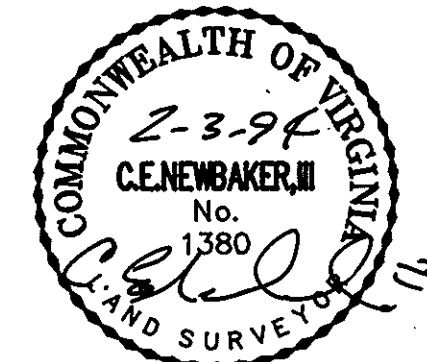
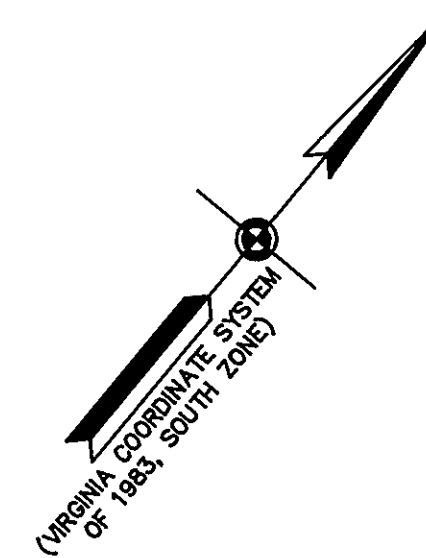
BY: *[Signature]*
 PLAT APPROVING AGENT

DATE: April 11, 1994

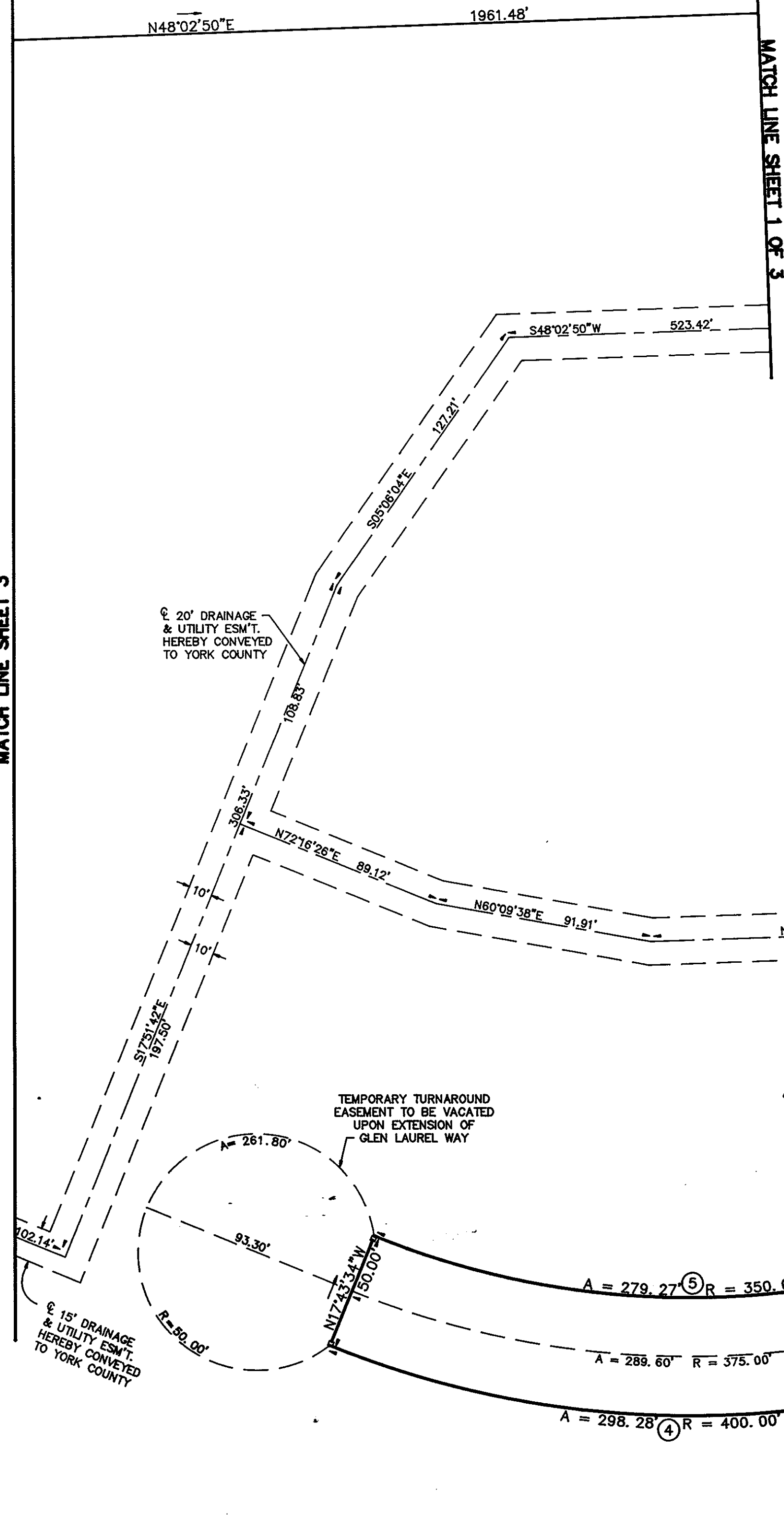
STATE OF VIRGINIA
 COUNTY OF YORK
 IN THE CLERK'S OFFICE OF THE CIRCUIT COURT FOR
 THE COUNTY OF YORK THE 11th DAY OF April
 1994, THIS PLAT WAS PRESENTED AND ADMITTED TO
 RECORD AS THE LAW DIRECTS IN PLAT BOOK 12
 PAGE 35.

TESTE: JANICE KANE, CLERK
 CLERK

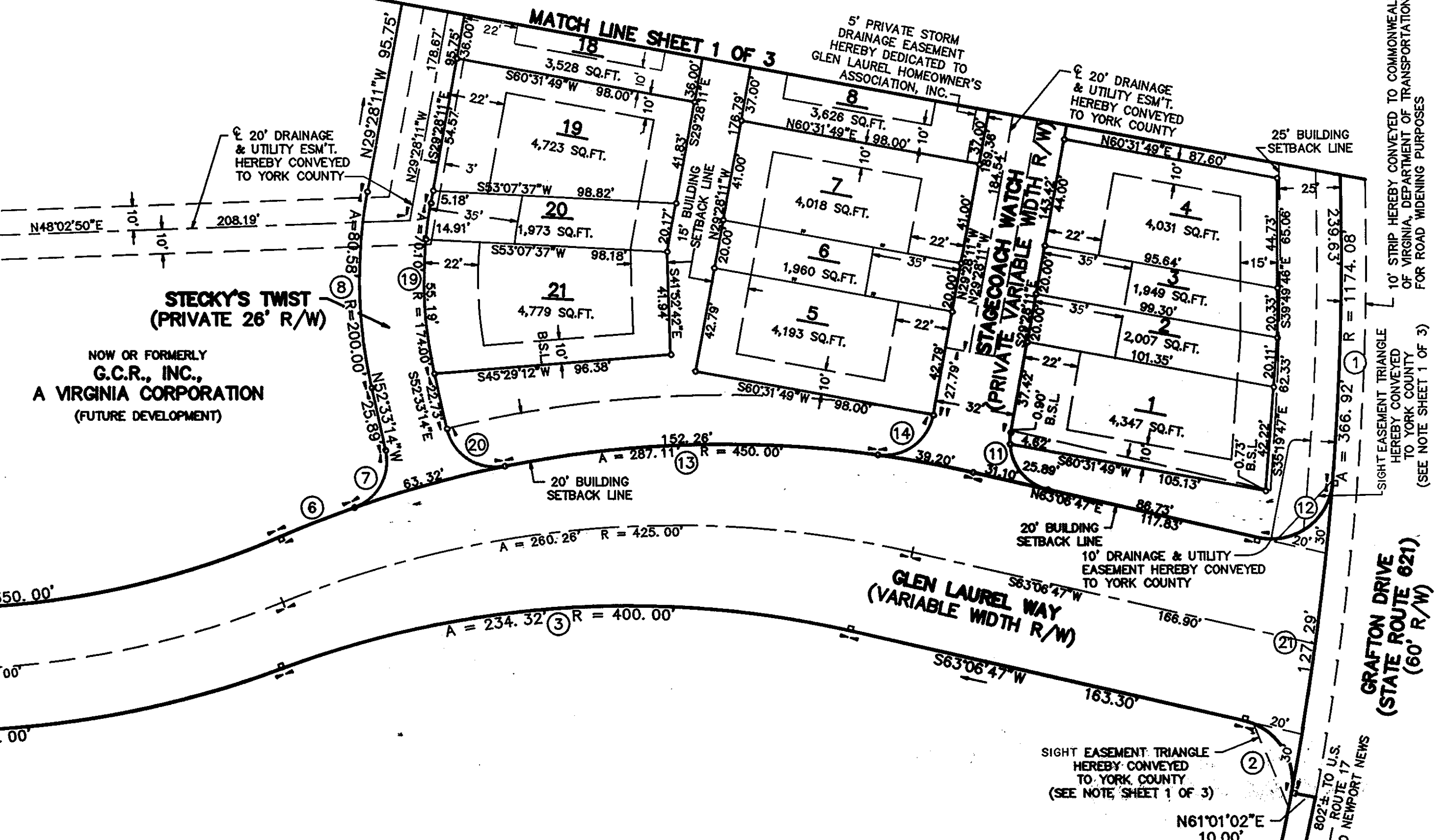
BY: Catharine Bender, D.C.
 Deed Book 787 Page 343



MATCH LINE SHEET 3



MATCH LINE SHEET 1 OF 3



10' STRIP HEREBY CONVEYED TO COMMONWEALTH OF VIRGINIA, DEPARTMENT OF TRANSPORTATION FOR ROAD WIDENING PURPOSES

GRAFTON DRIVE (STATE ROUTE 621) (60' R/W)

SIGHT EASEMENT TRIANGLE HEREBY CONVEYED TO YORK COUNTY (SEE NOTE SHEET 1 OF 3)

SIGHT EASEMENT TRIANGLE HEREBY CONVEYED TO YORK COUNTY (SEE NOTE SHEET 1 OF 3)