

PLAT OF SUBDIVISION
THE VILLAGES OF KILN CREEK
CORPORATE CENTER

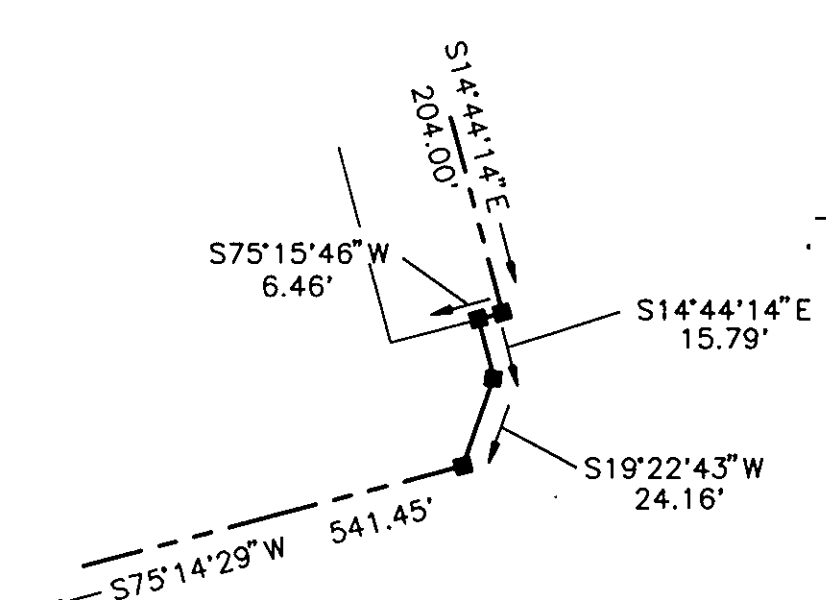
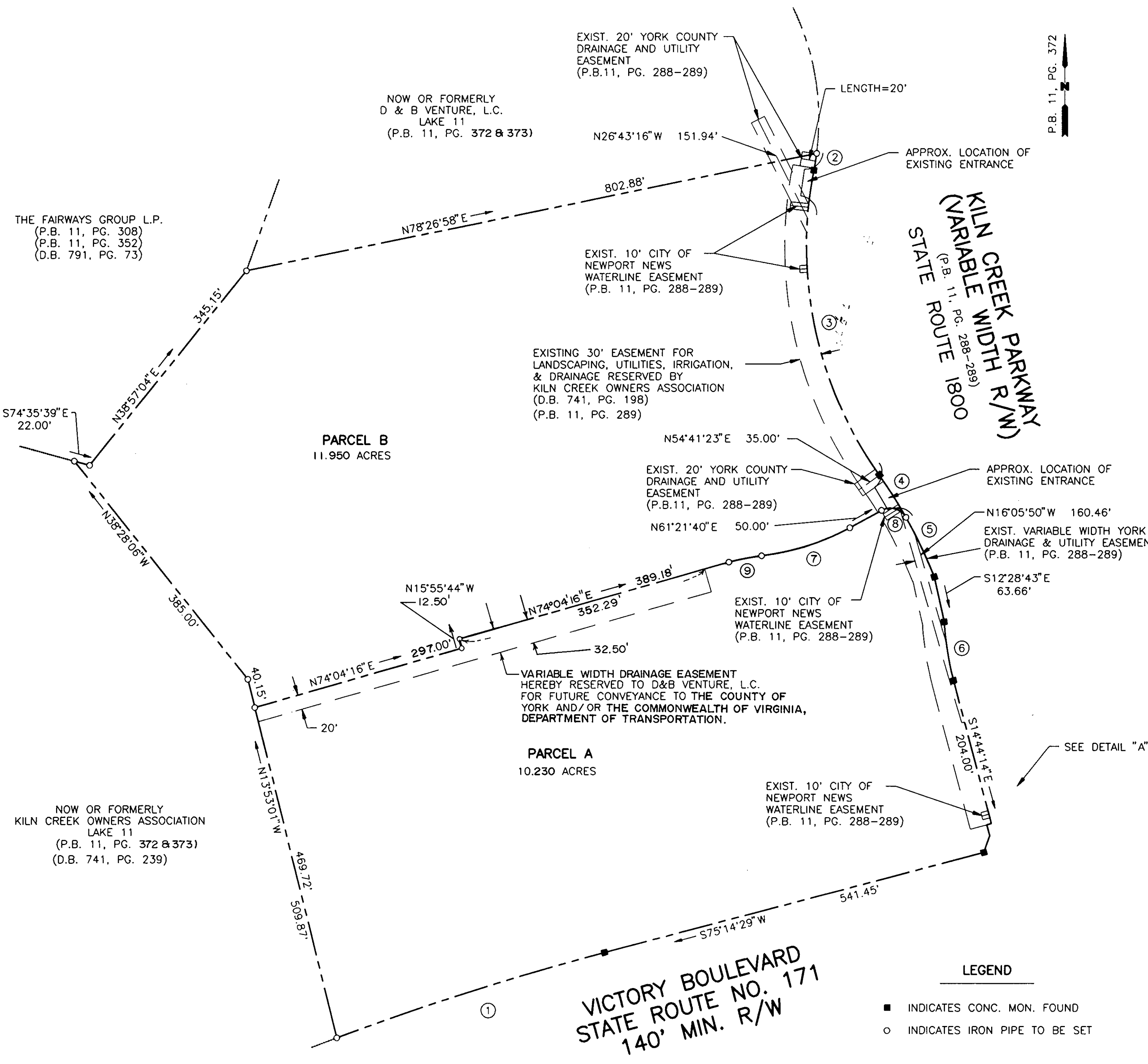
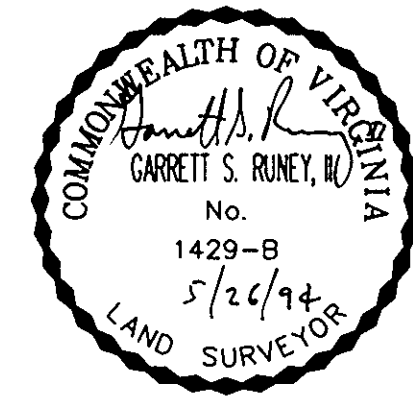
9

COUNTY OF YORK, VIRGINIA

DATE: MAY 19, 1994 SHEET 2 OF 2 SCALE: 1" = 100'



SLEDD, RUNEY & ASSOCIATES, P.C.
ENGINEERS PLANNERS SURVEYORS
11832 ROCK LANDING DRIVE, SUITE 203
NEWPORT NEWS, VIRGINIA 23606
(804) 873-3386



SEE DETAIL "A"

LEGEND

- INDICATES CONC. MON. FOUND
- INDICATES IRON PIPE TO BE SET

GRAPHIC SCALE



SCALE: 1" = 100'

APPROVED:
YORK COUNTY BOARD OF SUPERVISORS
BY: Mark Carter
PLAT APPROVING AGENT
DATE: MAY 26, 1994

STATE OF VIRGINIA
COUNTY OF YORK

IN THE CLERK'S OFFICE OF THE CIRCUIT COURT FOR
THE COUNTY OF YORK, THE 26 DAY OF May, 1994.
THIS MAP WAS PRESENTED AND ADMITTED TO RECORD AS
THE LAW DIRECTS IN PLAT BOOK 12, PAGE 59.

TESTE: NANCY B. KANE
CLERK

BY: Rochelle R. Darnice