

WATERLINE EASEMENT PLAT OF

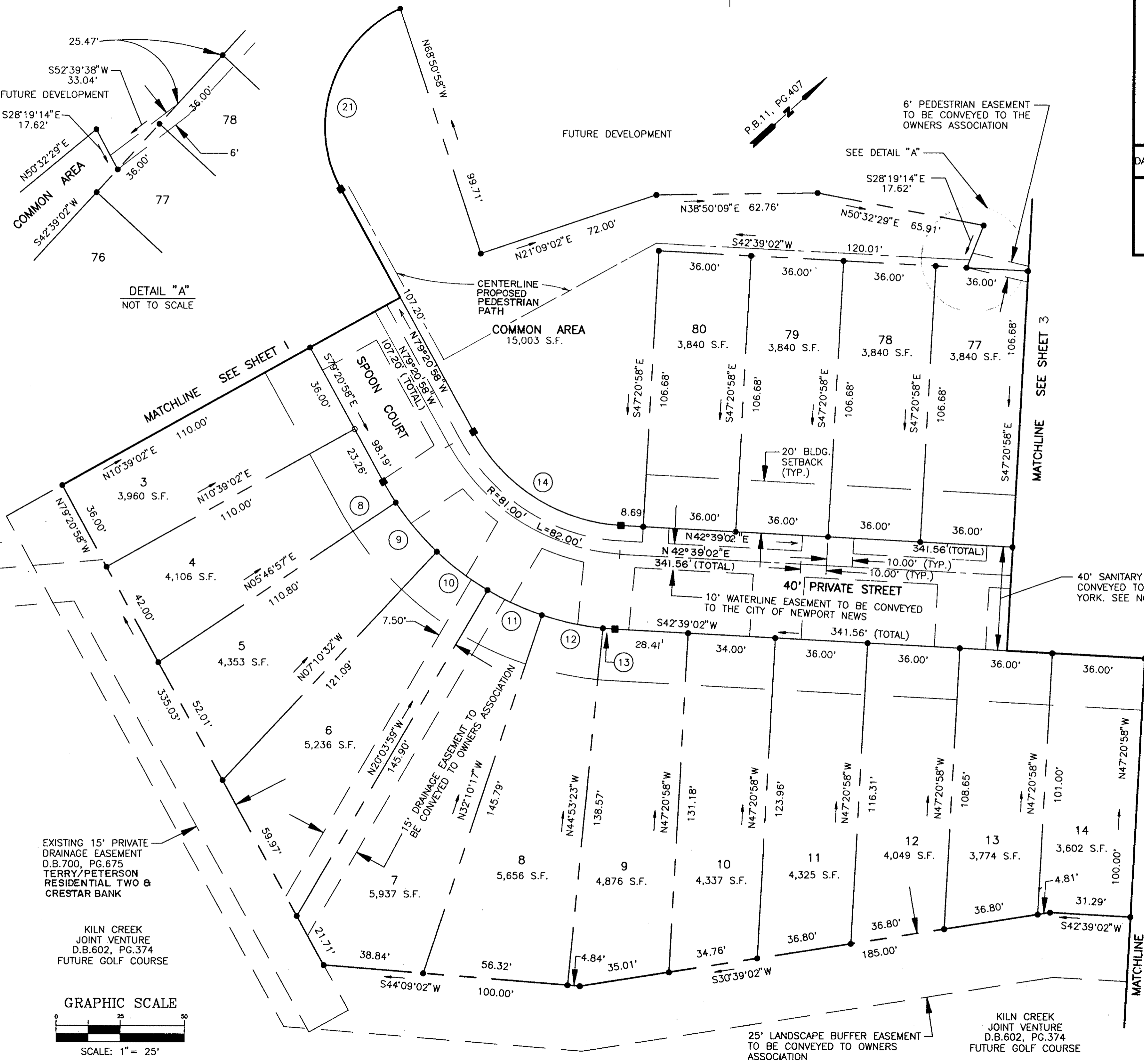
THE SANCTUARY AT KILN CREEK

SECTION ONE
SINGLE FAMILY ATTACHED 1
YORK COUNTY, VIRGINIA

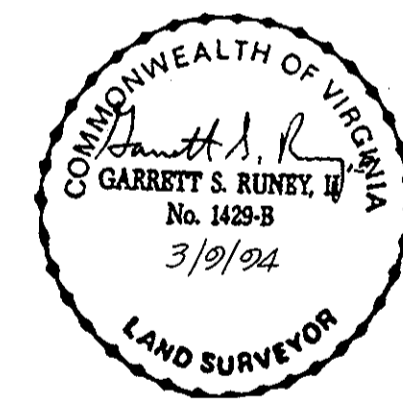
DATE: MARCH 9, 1994 SHEET 2 OF 3 SCALE: 1" = 25'



SLEDD, RUNEY & ASSOCIATES, P.C.
ENGINEERS PLANNERS SURVEYORS
11832 ROCK LANDING DRIVE, SUITE 203
NEWPORT NEWS, VIRGINIA 23606
(804) 873-3386

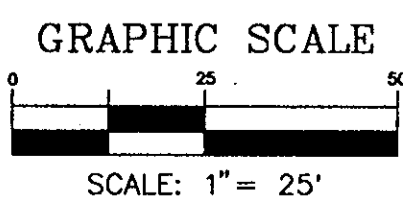


DETAIL "A"
NOT TO SCALE



EXISTING 15' PRIVATE DRAINAGE EASEMENT D.B.700, PG.675 TERRY/PETERSON RESIDENTIAL TWO & CRESTAR BANK

KILN CREEK JOINT VENTURE D.B.602, PG.374 FUTURE GOLF COURSE



Plat Book No. 12 Page 63

Filed in the Clerk's Office, Circuit Court, York Co., Va. the 3 day of June 1994

Teste: Nancy B. Kane, Clerk
[Signature]