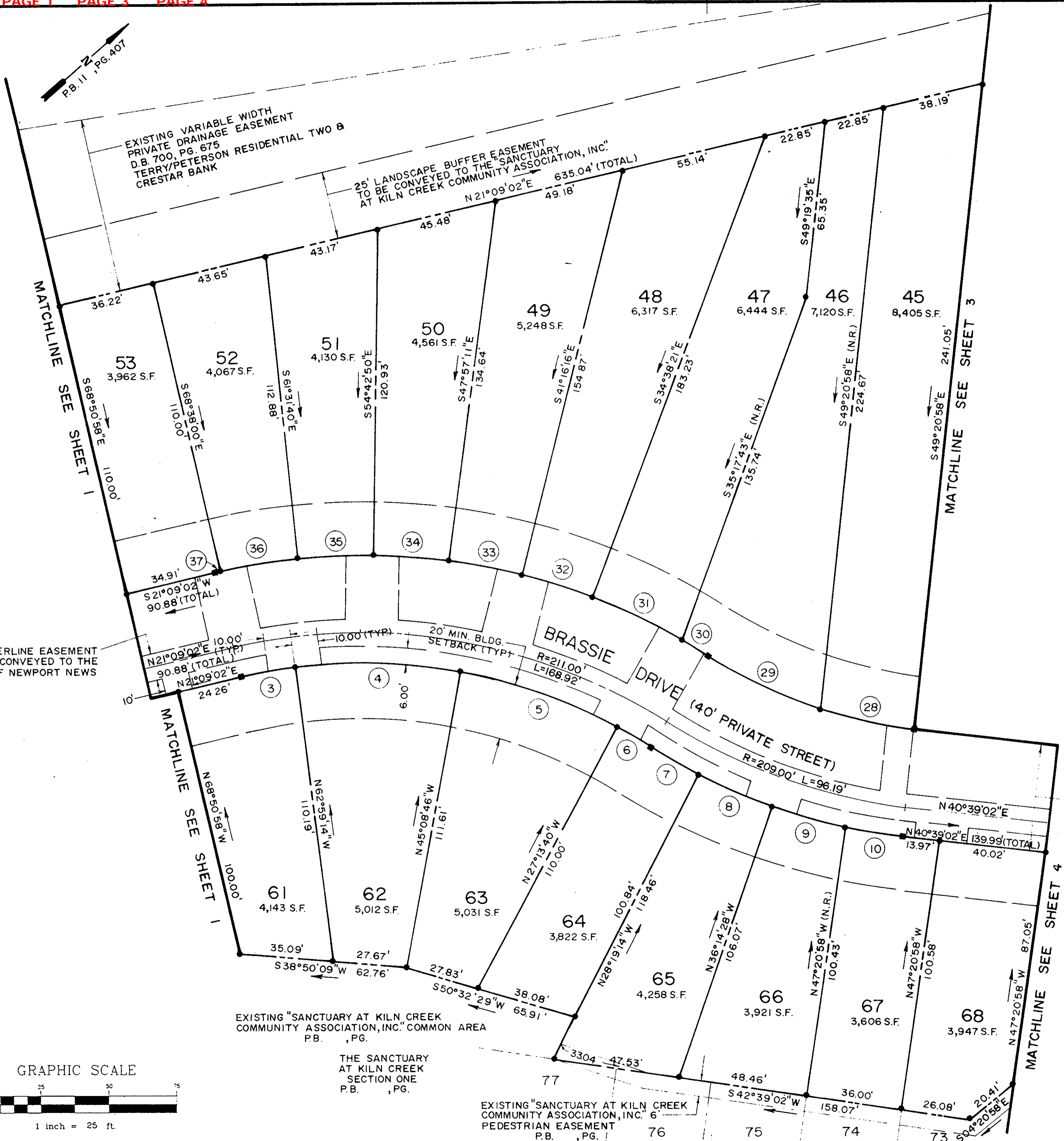


WATERLINE EASEMENT PLAT OF **104**
THE SANCTUARY AT KILN CREEK
SECTION TWO
SINGLE FAMILY ATTACHED 1
YORK COUNTY, VIRGINIA

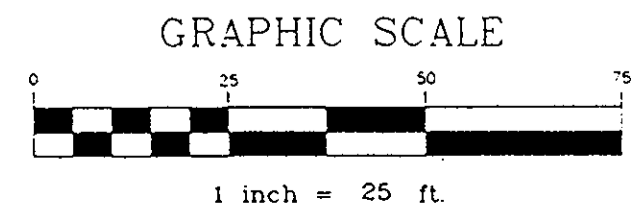
DATE: APRIL 8, 1994 SHEET 2 OF 4 SCALE: 1" = 25'

SRA SLEDD, RONEY & ASSOCIATES, P.C.
ENGINEERS PLANNERS SURVEYORS
11832 ROCK LANDING DRIVE, SUITE 203
NEWPORT NEWS, VIRGINIA 23608
(804) 873-3386



10' WATERLINE EASEMENT TO BE CONVEYED TO THE CITY OF NEWPORT NEWS

40' SANITARY SEWER EASEMENT HEREBY CONVEYED TO THE COUNTY OF YORK. SEE NOTE 5, SHEET 1 OF 5.



Plat Book No. 13 Page 104
NANCY B. KANE, CLERK
Filed in the Clerk's Office, Circuit Court, York Co., Va.
the 5 day of August 19 94
Teste:
Nancy B. Kane, Clerk
Cecil D. ... DC
Book Book 808 Page 773