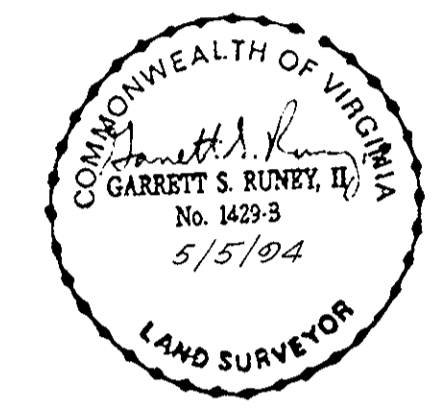


WATERLINE EASEMENT PLAT OF OAKWOOD SINGLE FAMILY AREA 10 COUNTY OF YORK, VIRGINIA

DATE: 5/5/94 SHEET 3 OF 3 SCALE: 1" = 50'

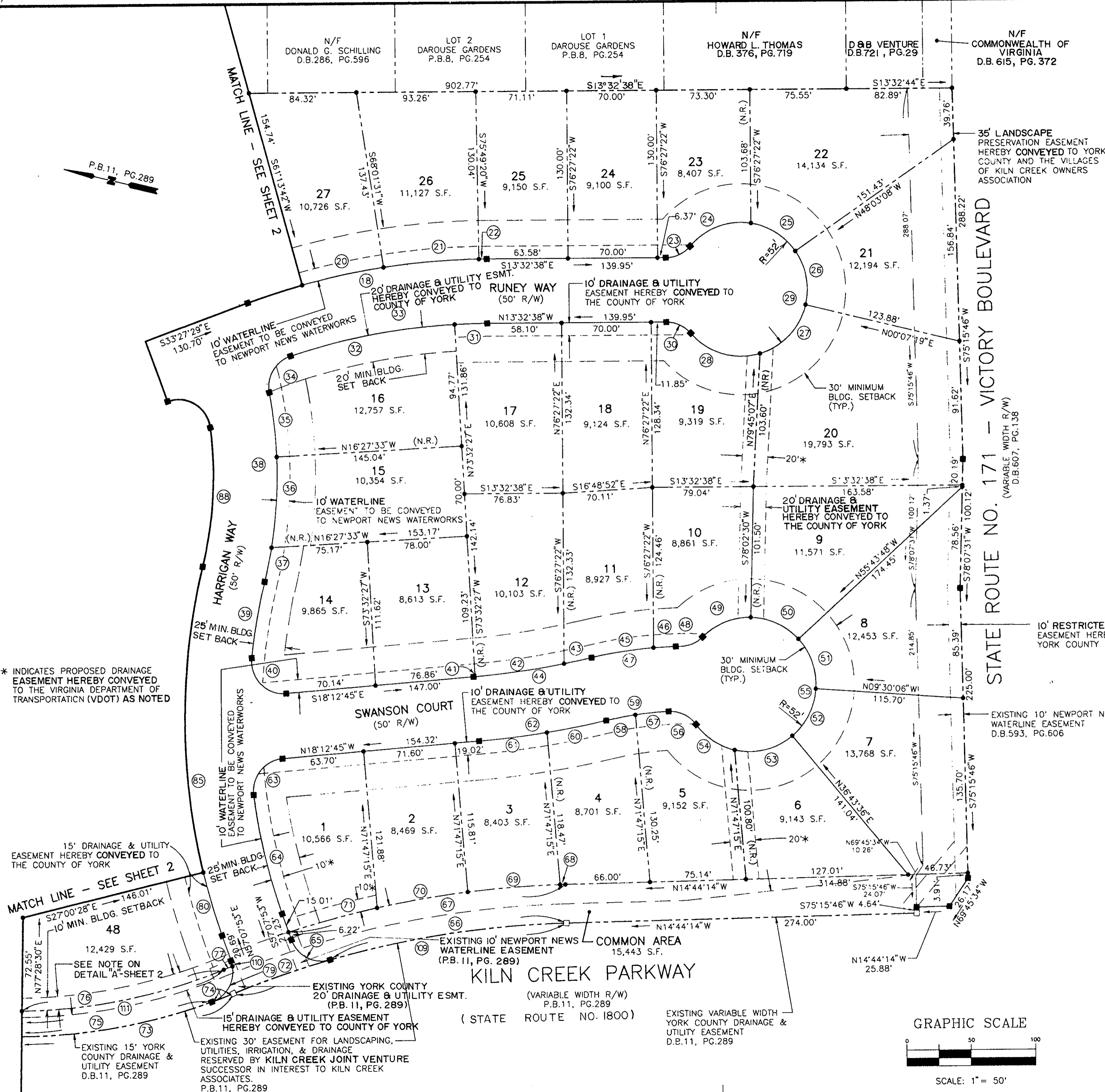


SLEDD, RONEY & ASSOCIATES, P.C. ENGINEERS PLANNERS SURVEYORS 11832 ROCK LANDING DRIVE, SUITE 203 NEWPORT NEWS, VIRGINIA 23606 (804) 873-3386



LEGEND

- INDICATES CONC. MON. TO BE SET
INDICATES IRON PIPE TO BE SET
INDICATES CONC. MON. FOUND
INDICATES IRON PIPE FOUND
INDICATES EASEMENT HEREBY CONVEYED AS NOTED
INDICATES EXISTING EASEMENT AS NOTED



* INDICATES PROPOSED DRAINAGE EASEMENT HEREBY CONVEYED TO THE VIRGINIA DEPARTMENT OF TRANSPORTATION (VDOT) AS NOTED

15' DRAINAGE & UTILITY EASEMENT HEREBY CONVEYED TO THE COUNTY OF YORK
MATCH LINE - SEE SHEET 2

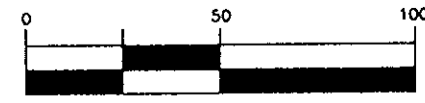
EXISTING 15' YORK COUNTY DRAINAGE & UTILITY EASEMENT D.B.11, PG.289
EXISTING YORK COUNTY 20' DRAINAGE & UTILITY ESMT. (P.B. 11, PG. 289)

EXISTING 30' EASEMENT FOR LANDSCAPING, UTILITIES, IRRIGATION, & DRAINAGE RESERVED BY KILN CREEK JOINT VENTURE SUCCESSOR IN INTEREST TO KILN CREEK ASSOCIATES. P.B.11, PG.289

EXISTING 10' NEWPORT NEWS WATERLINE EASEMENT (P.B. 11, PG. 289)
COMMON AREA 15,443 S.F.
KILN CREEK PARKWAY (STATE ROUTE NO. 1800) (VARIABLE WIDTH R/W) P.B.11, PG.289

EXISTING VARIABLE WIDTH YORK COUNTY DRAINAGE & UTILITY EASEMENT D.E.11, PG.289

GRAPHIC SCALE



SCALE: 1" = 50'

Plat Book No. 12 Page 109

NANCY B. KANE, CLERK

Filed in the Clerk's Office, Circuit Court, York Co., Va. the 5 day of August 1994

Teste: Nancy B. Kane, Clerk
Carol D. ...

Print No N-8682-85
Cost Est No 105FY 93