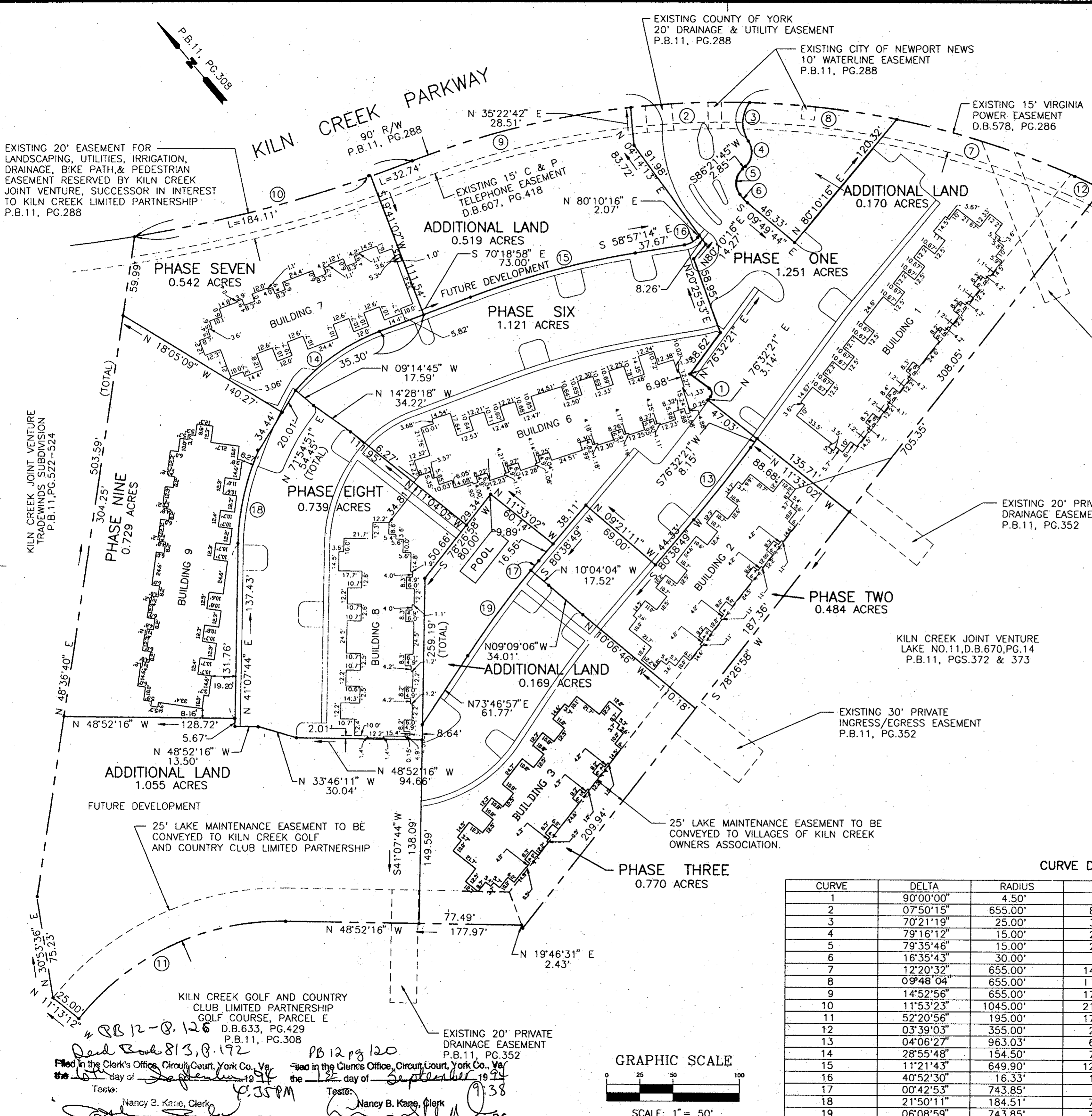


PLAT OF CONDOMINIUM  
**EAGLE SOUND**  
**AT KILN CREEK**  
 A CONDOMINIUM  
 PHASE NINE  
 THE VILLAGES OF KILN CREEK  
 COUNTY OF YORK, VIRGINIA

DATE: SEP.28, 1993 SHEET 2 OF 2 SCALE: 1" = 50'

**SRA** SLEDD, RUNEY & ASSOCIATES, P.C.  
 ENGINEERS PLANNERS SURVEYORS  
 11832 ROCK LANDING DRIVE, SUITE 203  
 NEWPORT NEWS, VIRGINIA 23606  
 (804) 873-3386

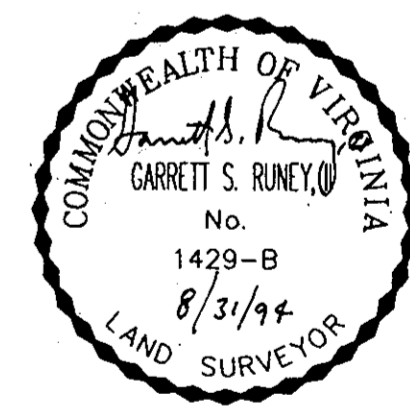
EXHIBIT A-2



**AREA TABULATIONS**

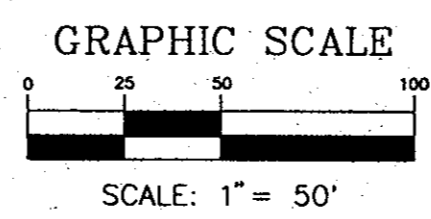
|                           |                  |
|---------------------------|------------------|
| PHASE 1                   | 1.251 AC.        |
| PHASE 2                   | 0.484 AC.        |
| PHASE 3                   | 0.770 AC.        |
| PHASE 6                   | 1.121 AC.        |
| PHASE 7                   | 0.542 AC.        |
| PHASE 8                   | 0.739 AC.        |
| PHASE 9                   | 0.729 AC.        |
| ADDITIONAL LAND           | 1.913 AC.        |
| <b>TOTAL AREA OF SITE</b> | <b>7.549 AC.</b> |

**PARKING TABULATION**  
 178 TOTAL SPACES



CURVE DATA TABLE

| CURVE | DELTA     | RADIUS   | LENGTH  | TANGENT | CHORD   | BEARING       |
|-------|-----------|----------|---------|---------|---------|---------------|
| 1     | 90°00'00" | 4.50'    | 7.07'   | 4.50'   | 6.36'   | N 31°32'21" E |
| 2     | 07°50'15" | 655.00'  | 89.60'  | 44.87'  | 89.53'  | S 52°00'55" E |
| 3     | 70°21'19" | 25.00'   | 30.70'  | 17.62'  | 28.81'  | S 42°16'12" W |
| 4     | 79°16'12" | 15.00'   | 20.75'  | 12.42'  | 19.14'  | N 46°43'39" E |
| 5     | 79°35'46" | 15.00'   | 20.84'  | 12.50'  | 19.20'  | S 46°33'51" W |
| 6     | 16°35'43" | 30.00'   | 8.69'   | 4.38'   | 8.66'   | S 01°35'01" E |
| 7     | 12°20'32" | 655.00'  | 141.10' | 70.82'  | 140.82' | N 32°07'27" W |
| 8     | 09°48'04" | 655.00'  | 112.04' | 56.16'  | 111.91' | N 43°11'45" W |
| 9     | 14°52'56" | 655.00'  | 170.13' | 85.55'  | 169.65' | N 63°22'30" W |
| 10    | 11°53'23" | 1045.00' | 216.85' | 108.82' | 216.46' | S 64°52'16" E |
| 11    | 52°20'56" | 195.00'  | 178.16' | 95.84'  | 172.03' | N 75°02'44" W |
| 12    | 03°39'03" | 355.00'  | 22.62'  | 11.31'  | 22.62'  | S 24°07'40" E |
| 13    | 04°06'27" | 963.03'  | 69.04'  | 34.54'  | 69.03'  | N 78°35'35" E |
| 14    | 28°55'48" | 154.50'  | 78.01'  | 39.86'  | 77.18'  | N 84°46'51" W |
| 15    | 11°21'43" | 649.90'  | 128.88' | 64.65'  | 128.67' | N 64°38'06" W |
| 16    | 40°52'30" | 16.33'   | 11.65'  | 6.09'   | 11.41'  | S 79°23'29" E |
| 17    | 00°42'53" | 743.85'  | 9.28'   | 4.64'   | 9.28'   | N 80°17'22" E |
| 18    | 21°50'11" | 184.51'  | 70.32'  | 35.59'  | 69.89'  | N 52°29'43" E |
| 19    | 06°08'59" | 743.85'  | 79.84'  | 39.96'  | 79.80'  | N 76°51'26" E |



KILN CREEK GOLF AND COUNTRY CLUB LIMITED PARTNERSHIP  
 GOLF COURSE, PARCEL E  
 D.B.633, PG.429  
 P.B.11, PG.308  
 PB 12-P.126  
 Filed in the Clerk's Office, Circuit Court, York Co., Va. the 12th day of September 1994  
 Nancy B. Kane, Clerk  
 D.C.

EXISTING 20' PRIVATE DRAINAGE EASEMENT  
 P.B.11, PG.352  
 PB 12 pg 120  
 Filed in the Clerk's Office, Circuit Court, York Co., Va. the 12th day of September 1994  
 Nancy B. Kane, Clerk  
 D.C.