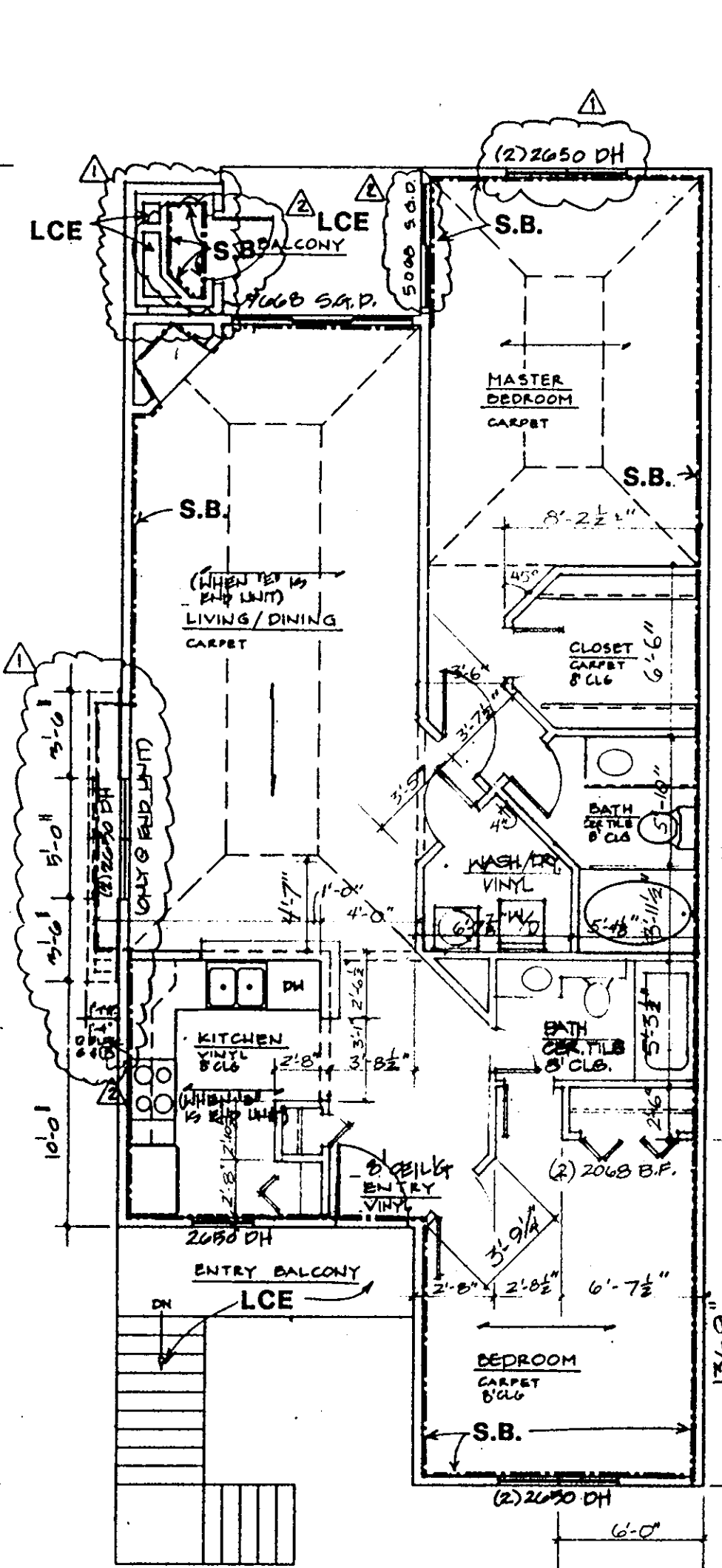
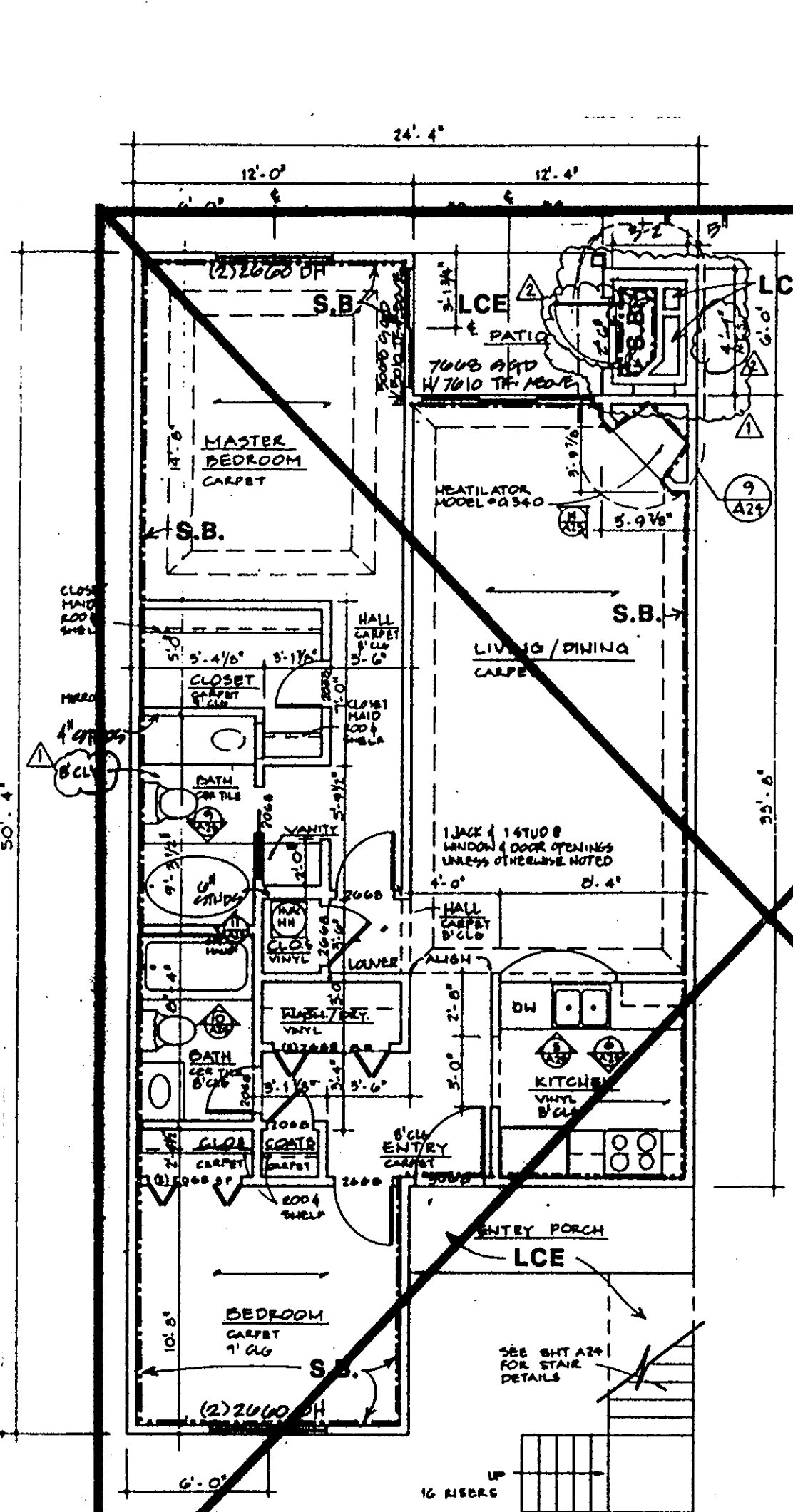


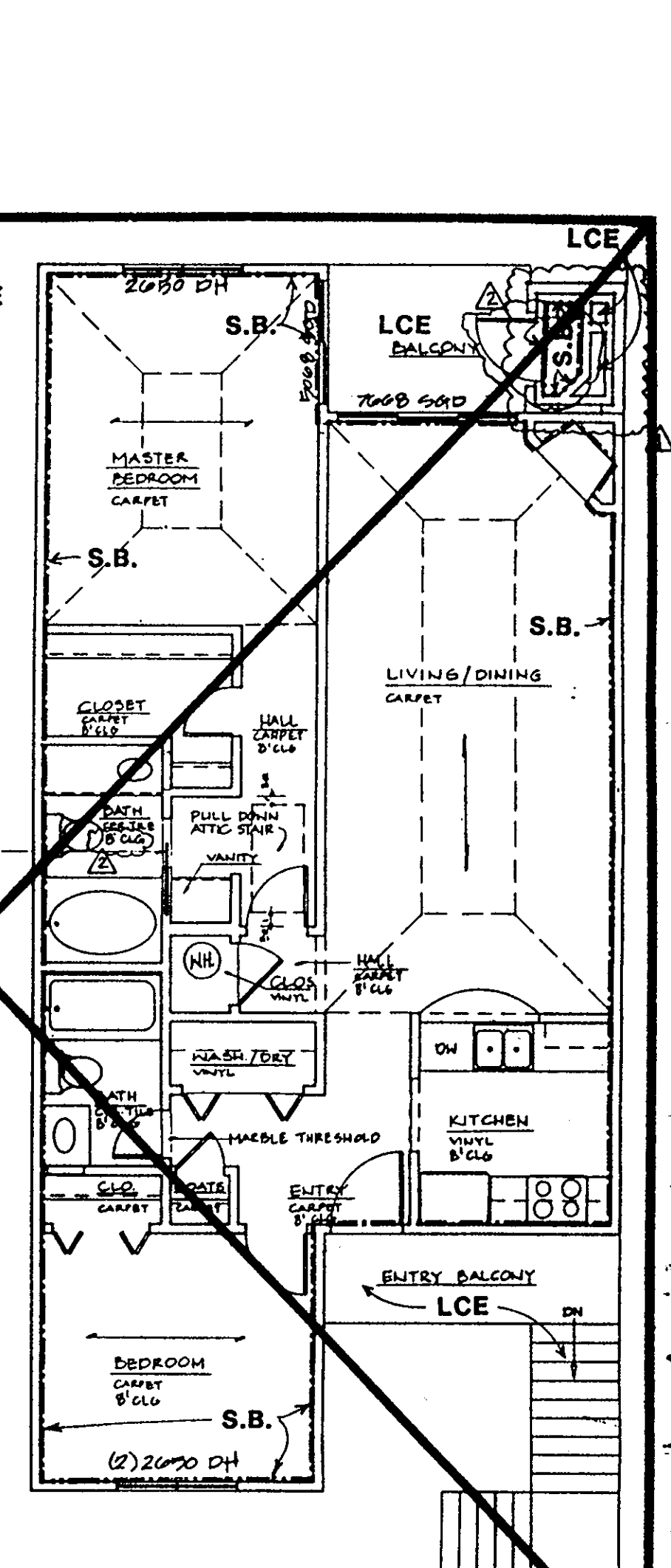
FIRST FLR. PLAN - UNIT 'E'



SECOND FLR. PLAN - UNIT 'E'



FIRST FLR. PLAN - UNIT 'C'



SECOND FLR. PLAN - UNIT 'C'

LEGEND:
 S.B. - SIDE (PERIMETER) BOUNDARY
 LCE - LIMITED COMMON ELEMENT
 CE - COMMON ELEMENT

I hereby certify that this is a correct and accurate plan, that this plan is in compliance with Virginia Code Ann. Subsections 55-79.58 (b) and (e), and that the units depicted hereon have been substantially completed.
 Garrett S. Runy, II, P.E.

Filed in the Clerk's Office, Circuit Court, York Co., Va. the 22nd day of December 1991
 Teste: Nancy B. Kane, Clerk
 [Signature] D.C.
 Plat Book 12 Page 175

NO	DATE	REVISIONS	BY
1	10/26/91	APPENDIX	

WILLIAMS, TAZEWELL AND ASSOCIATES
 Architecture Engineering Planning Interiors
 710 West 21st Street, Norfolk, Virginia 23517
 Plat of Condominium
 EAGLE SOUND AT KILN CREEK
 YORK COUNTY, VIRGINIA
 EXHIBIT A-3
 PHASE FIVE
 File
 Date
 Sheet
 4 OF 7