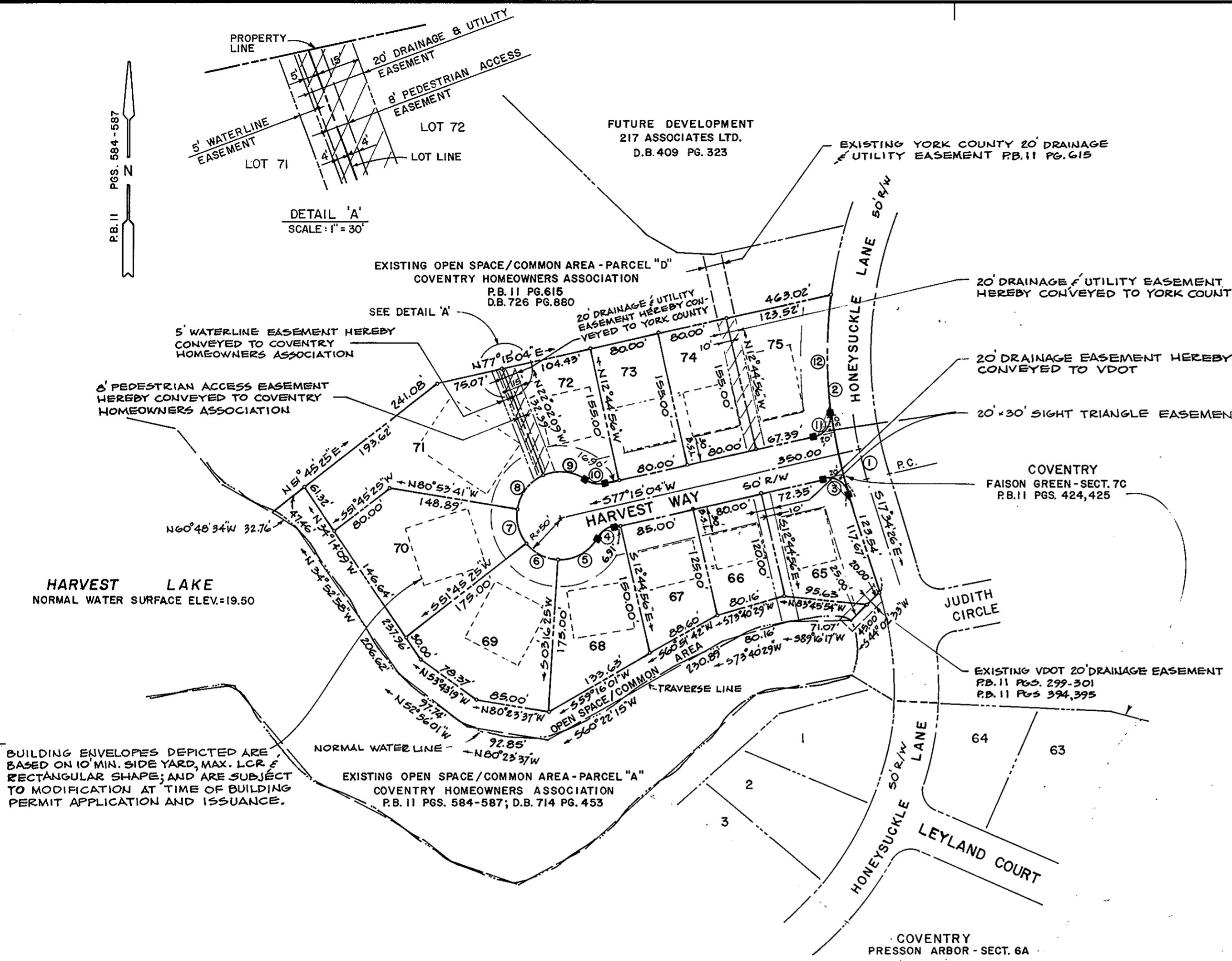
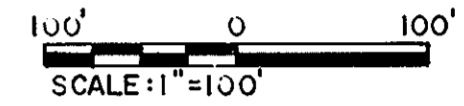


RECORD PLAT
 COVENTRY PLANNED DEVELOPMENT
 PRESSON ARBOR
 SECTION 6C

COUNTY OF YORK, VIRGINIA
 LOUIS M. PENCI, Inc.
 863 Catalina Drive
 Newport News, Virginia 23602

SCALE: 1" = 100' SEPTEMBER 7, 1993
 SHEET 2 OF 2

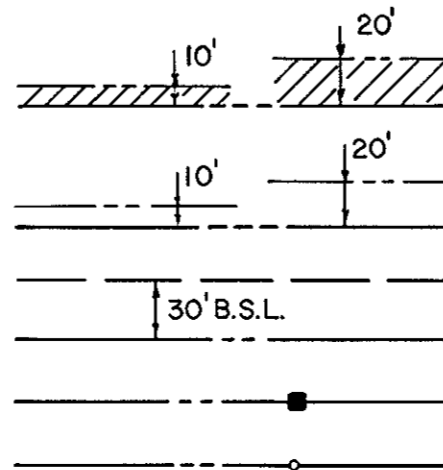


CURVE DATA

	DELTA	RADIUS	LENGTH	TANGENT	CHORD BEARING	CHORD DIST.
1	04° 49' 30"	475.00'	40.00'	20.01'	S 15° 09' 41" E	39.99'
2	25° 55' 31"	500.00'	226.24'	115.09'	S 04° 36' 41" E	224.31'
3	85° 10' 30"	25.00'	37.16'	22.98'	N 60° 09' 41" W	33.84'
4	46° 34' 03"	30.00'	24.38'	12.91'	S 53° 58' 03" W	23.72'
5	62° 35' 24"	50.00'	54.62'	30.39'	S 61° 58' 43" W	51.94'
6	48° 29' 00"	50.00'	42.31'	22.51'	N 62° 29' 05" W	41.06'
7	47° 20' 54"	50.00'	41.32'	21.92'	N 14° 34' 08" W	40.15'
8	58° 51' 32"	50.00'	51.36'	28.21'	N 38° 32' 05" E	49.14'
9	55° 51' 16"	50.00'	48.74'	26.50'	S 84° 06' 31" E	46.83'
10	46° 34' 03"	30.00'	24.38'	12.91'	S 79° 27' 55" E	23.72'
11	84° 32' 06"	25.00'	36.89'	22.72'	N 34° 59' 01" E	33.63'
12	15° 38' 07"	500.00'	136.44'	68.65'	N 00° 32' 01" E	136.01'

BUILDING ENVELOPES DEPICTED ARE BASED ON 10' MIN. SIDE YARD, MAX. LCR & RECTANGULAR SHAPE; AND ARE SUBJECT TO MODIFICATION AT TIME OF BUILDING PERMIT APPLICATION AND ISSUANCE.

MAXIMUM LOT COVERAGE		
LOT NO.	LOT AREA (SF)	COVERAGE (LCR = 0.25)
65	13,756	3,439
66	9,800	2,450
67	11,688	2,922
68	15,380	3,845
69	20,702	5,176
70	21,274	5,319
71	26,586	6,647
72	13,276	3,319
73	12,400	3,100
74	12,400	3,100
75	15,818	3,955



LEGEND

- EASEMENTS SHOWN THIS ARE HEREBY CONVEYED TO THE COUNTY OF YORK FOR DRAINAGE & UTILITIES.
- EASEMENTS SHOWN THIS ARE HEREBY CONVEYED TO THE VIRGINIA DEPT. OF TRANSPORTATION (VDOT)
- MINIMUM BUILDING SETBACK LINE SHOWN THIS
- CONCRETE MONUMENTS SHOWN THIS (TO BE SET)
- IRON PIPES SHOWN THIS (TO BE SET)



APPROVED
 YORK COUNTY BOARD OF SUPERVISORS

By: J. Mark Carter
 PLAT APPROVING AGENT
 Date: JANUARY 24, 1995

STATE OF VIRGINIA
 COUNTY OF YORK
 IN THE CLERK'S OFFICE OF THE CIRCUIT COURT FOR THE COUNTY OF YORK THE 24 DAY OF Jan. 1995
 THIS MAP WAS PRESENTED AND ADMITTED TO RECORD AS THE LAW DIRECTS IN PLAT BOOK 12, PAGE 195
 TESTE: Nancy B. Kane CLERK
 BY: Carol Dosselmann, Deputy Clerk