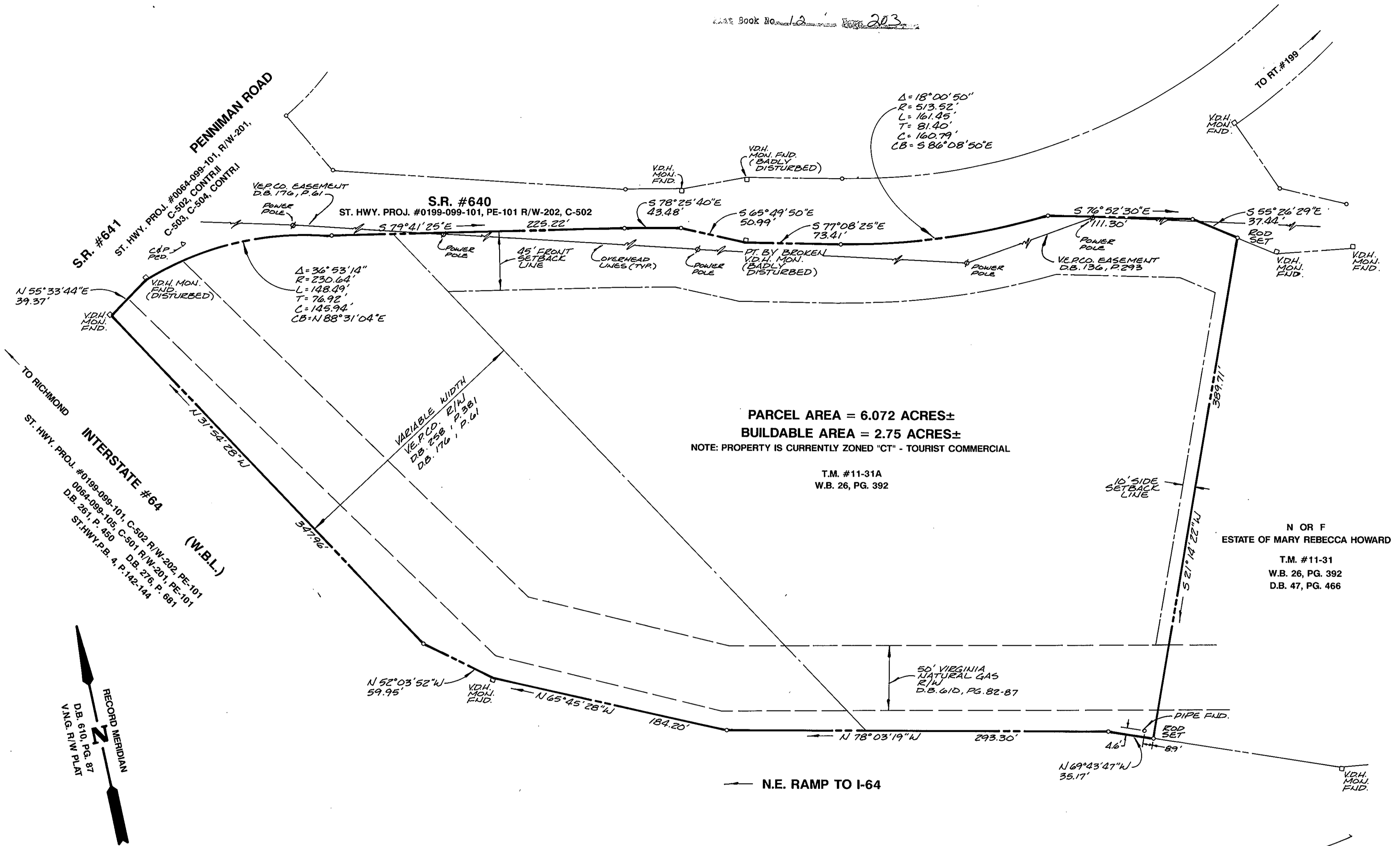
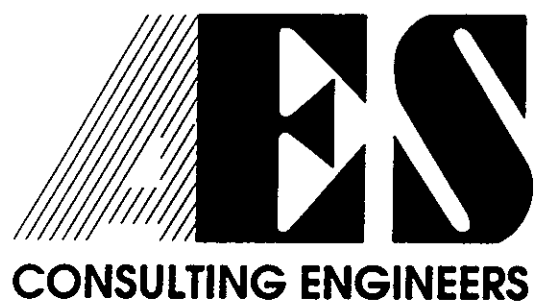


PLAT Book No. 10 203



Filed in the Clerk's Office, Circuit Court, York Co., Va.
 the 10th day of Feb. 1995
 Teste: Nancy B. Kane, Clerk
[Signature]

~~CANCELLED AND RELEASED THIS~~
~~DAY OF _____ 19__~~
~~NANCY B. KANE, CLERK~~
~~CIRCUIT COURT, YORK COUNTY, VA~~



5248 Olde Towne Road, Suite 1
 Williamsburg, Virginia 23188
 (804) 253-0040
 Fax (804) 220-8994

PLAT OF SURVEY
A PARCEL CONTAINING 6.072 ACRES±
CATHERINE WALLACE PROPERTY
FOR CONVEYANCE TO
ROBERT S. KRAUS

BRUTON DISTRICT YORK COUNTY VIRGINIA



No.	DATE	REVISION / COMMENT / NOTE	BY
2	2/6/95	ADDED EASEMENT REFERENCES	RWE
1	1/27/95	REVISED TITLE BLOCK FOR CONVEYANCE	RWE

Designed	Drawn
Scale	Date
1" = 50'	
Project No.	
8024 A	
Drawing No.	
1 OF 1	