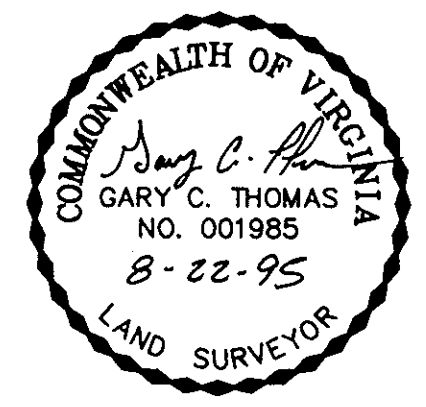


PLAT OF SUBDIVISION  
**ROBERTS TRACE SECTION ONE**  
 COUNTY OF YORK, VIRGINIA

DATE: 8/22/95 SHEET 2 OF 2 SCALE: 1"=50'  
 PROJECT NO: 95-006 DRAWN BY: PAUL MICHAEL

**SLEDD & ASSOCIATES, P.C.**  
 ENGINEERS PLANNERS SURVEYORS  
 11832 ROCK LANDING DRIVE, SUITE 203  
 NEWPORT NEWS, VIRGINIA 23606  
 (804) 873-3386

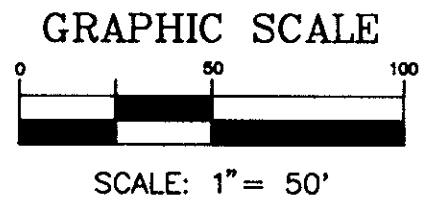
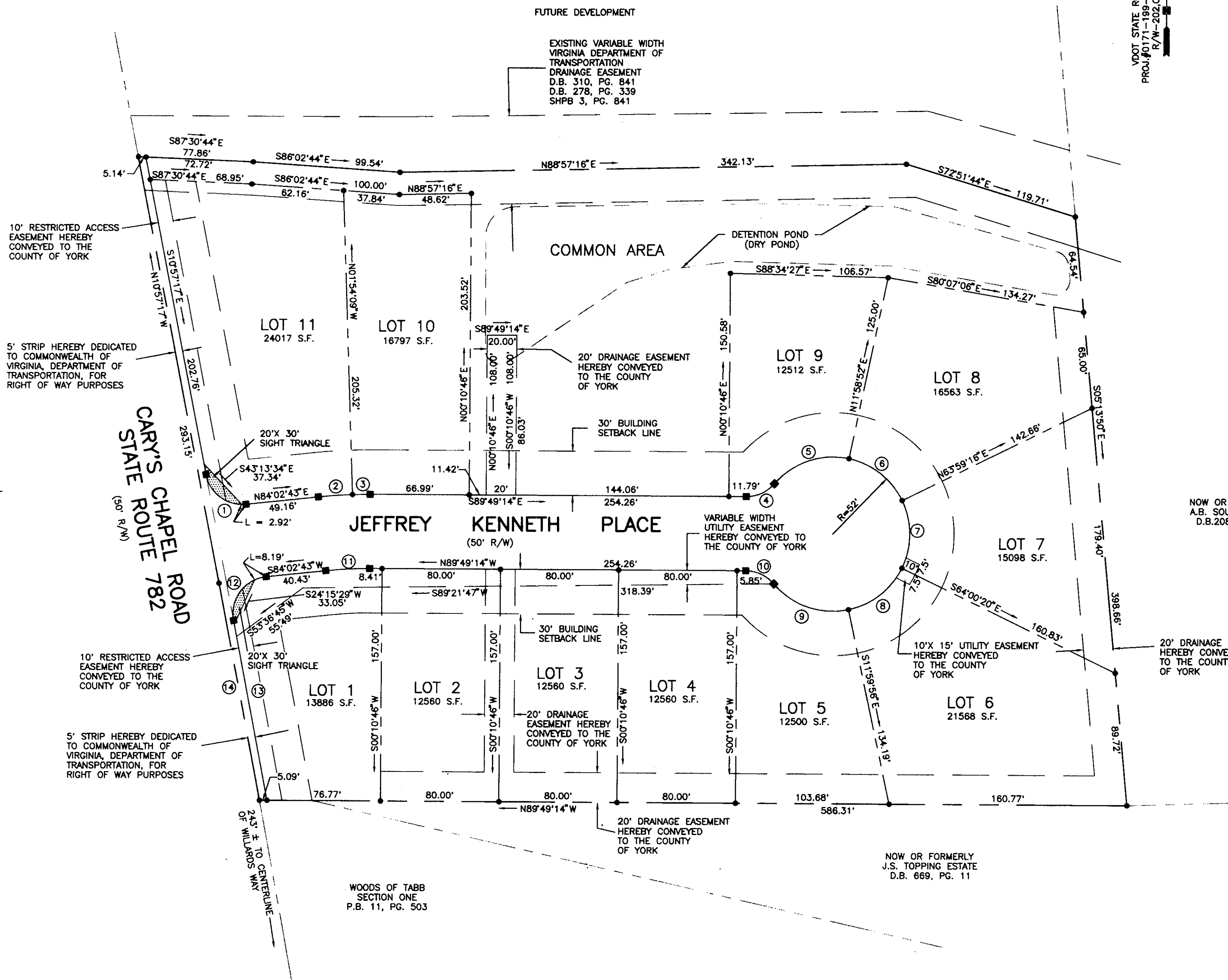


NOW OR FORMERLY  
 A.B. SOUTHAL, JR.  
 D.B.208, PG.368

APPROVED:  
 YORK COUNTY BOARD OF SUPERVISORS  
 BY: *John T. Quinn, PE*  
 PLAT APPROVING AGENT  
 DATE: 12-6-95

STATE OF VIRGINIA  
 COUNTY OF YORK  
 IN THE CLERK'S OFFICE OF THE CIRCUIT COURT FOR  
 THE COUNTY OF YORK, THE 10th DAY OF December 1995.  
 THIS MAP WAS PRESENTED AND ADMITTED TO RECORD AS  
 THE LAW DIRECTS IN PLAT BOOK 12, PAGE 309.

TESTE: *Nancy B. Kane*  
 CLERK  
 BY: *Rachael R. Davaise*



- LEGEND
- INDICATES IRON PIPE TO BE SET
  - INDICATES CONC. MON. TO BE SET
  - INDICATES VARIABLE WIDTH SIGHT EASEMENT HEREBY CONVEYED TO THE COUNTY OF YORK