

MATCH LINE - SEE SHEET 3

PLAT OF SUBDIVISION  
**SEAN'S GLEN**  
COUNTY OF YORK, VIRGINIA

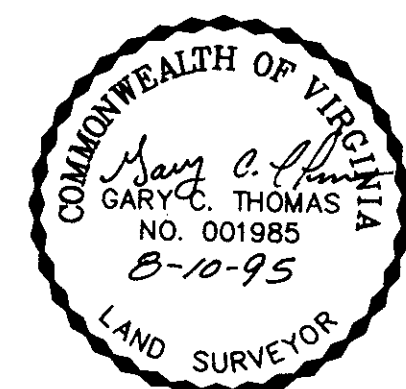
DATE: 8/10/95 SHEET 2 OF 4 SCALE: 1"=50'  
PROJECT NO: 95-825 DRAWN BY: PAUL MICHAEL

**SLEDD & ASSOCIATES, P.C.**  
ENGINEERS PLANNERS SURVEYORS  
11832 ROCK LANDING DRIVE, SUITE 203  
NEWPORT NEWS, VIRGINIA 23606  
(804) 873-3386

AREA OUTSIDE OF EASEMENTS IS THE AREA OUTSIDE \* OF THE 200' VEPCO EASEMENT AND THE 50' VIRGINIA NATURAL GAS EASEMENT.

COLONIAL PARKWAY (500' R/W)

P.B.10, PG.247



APPROVED:  
YORK COUNTY BOARD OF SUPERVISORS

BY: *[Signature]*  
PLAT APPROVING AGENT

DATE: 12-11-95

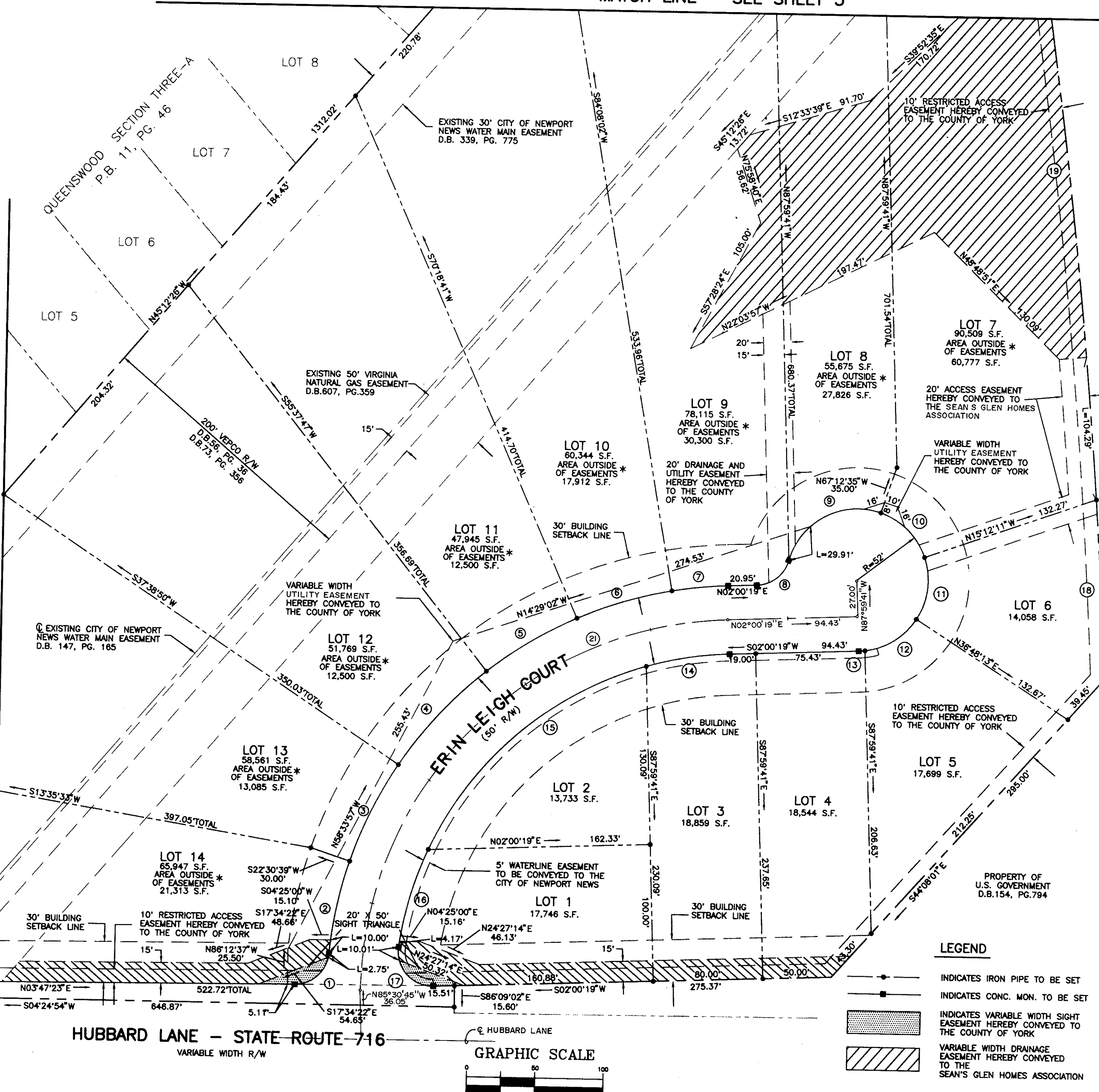
STATE OF VIRGINIA  
COUNTY OF YORK

IN THE CLERK'S OFFICE OF THE CIRCUIT COURT FOR THE COUNTY OF YORK, THE 11<sup>th</sup> DAY OF Dec, 1995 THIS MAP WAS PRESENTED AND ADMITTED TO RECORD AS THE LAW DIRECTS IN PLAT BOOK 12, PAGE 317 3:5D

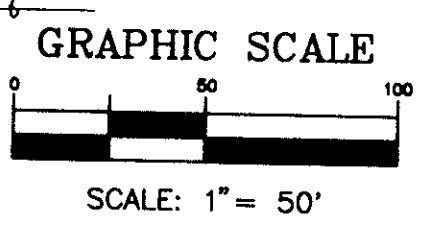
TESTE: *Nancy B. Kane*  
CLERK

BY: *[Signature]*

MATCH LINE - SEE SHEET 4



- LEGEND**
- INDICATES IRON PIPE TO BE SET
  - INDICATES CONC. MON. TO BE SET
  - INDICATES VARIABLE WIDTH SIGHT EASEMENT HEREBY CONVEYED TO THE COUNTY OF YORK
  - VARIABLE WIDTH DRAINAGE EASEMENT HEREBY CONVEYED TO THE SEAN'S GLEN HOMES ASSOCIATION
  - 15' LANDSCAPE, FENCE AND SIGN EASEMENT HEREBY CONVEYED TO SEAN'S GLEN HOMES ASSOCIATION



HUBBARD LANE - STATE ROUTE 716  
VARIABLE WIDTH R/W

MATCH LINE - SEE SHEET 3