

# GLEN LAUREL

## SECTION SEVEN

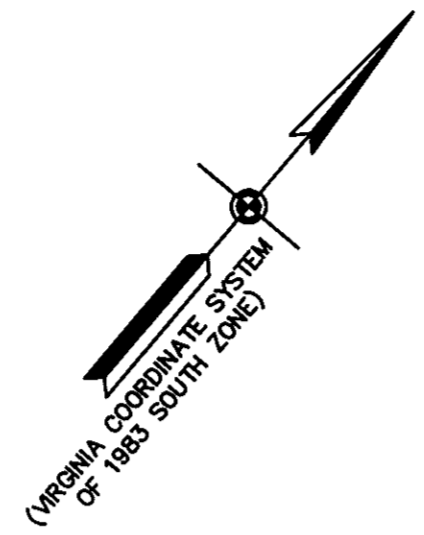
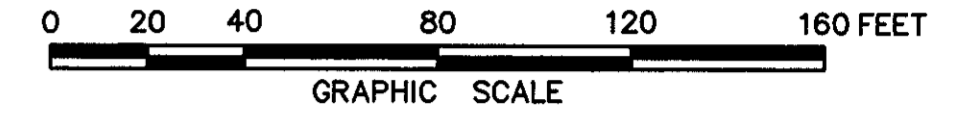
GRAFTON DISTRICT - COUNTY OF YORK, VIRGINIA

### THE SIRINE GROUP, LTD.

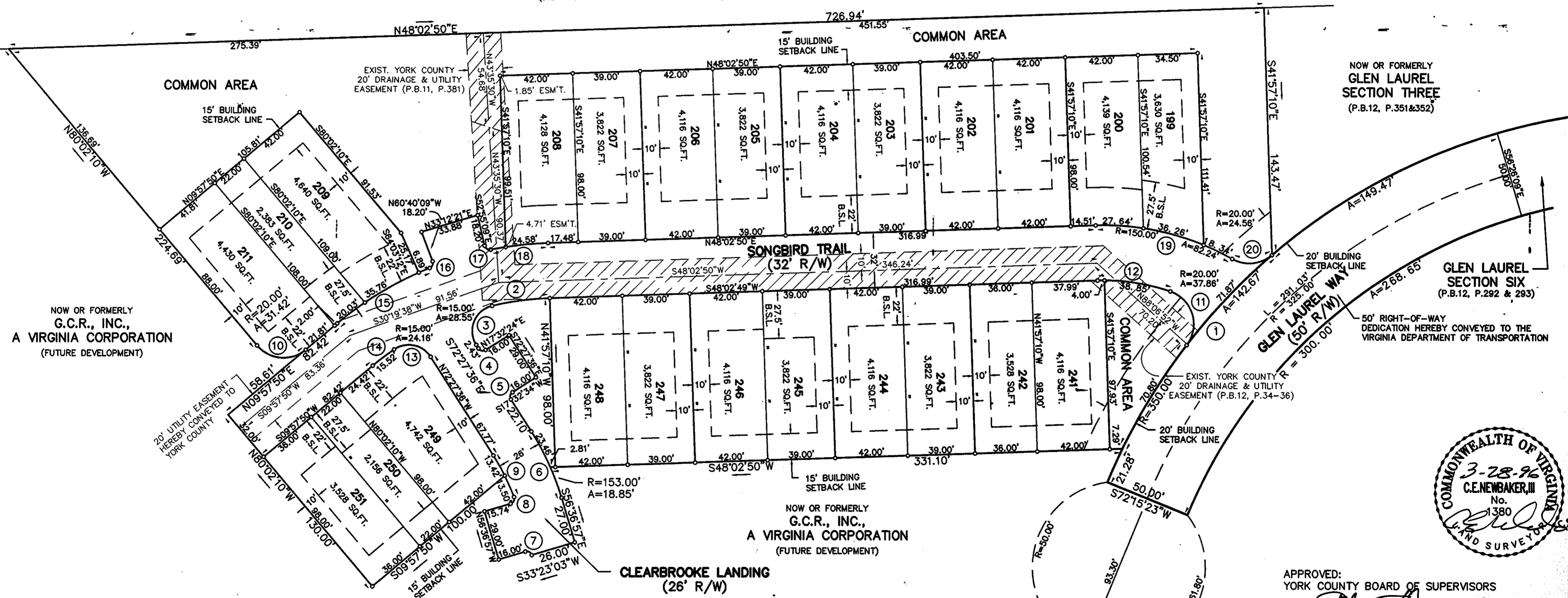
SURVEYORS • ENGINEERS • PLANNERS  
P.O. BOX 450, ROUTE 17  
WHITE MARSH, VIRGINIA 23183

SCALE: 1" = 40' DECEMBER 7, 1995

### SHEET 2 OF 2



NOW OR FORMERLY  
**COUNTY SCHOOL BOARD OF YORK**  
(D.B.758, P.553; P.B.11, P.677)



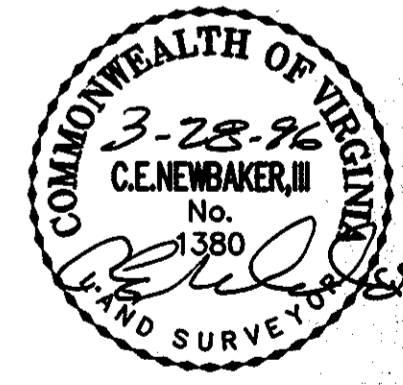
NOW OR FORMERLY  
**G.C.R., INC.,**  
A VIRGINIA CORPORATION  
(FUTURE DEVELOPMENT)

NOW OR FORMERLY  
**G.C.R., INC.,**  
A VIRGINIA CORPORATION  
(FUTURE DEVELOPMENT)

NOW OR FORMERLY  
**GLEN LAUREL SECTION THREE**  
(P.B.12, P.351&352)

**GLEN LAUREL SECTION SIX**  
(P.B.12, P.292 & 293)

50' RIGHT-OF-WAY DEDICATION HEREBY CONVEYED TO THE VIRGINIA DEPARTMENT OF TRANSPORTATION



TEMPORARY TURNAROUND EASEMENT TO BE VACATED UPON EXTENSION OF GLEN LAUREL WAY

APPROVED:  
YORK COUNTY BOARD OF SUPERVISORS  
BY: *[Signature]*  
PLAT APPROVING AGENT  
DATE: 4-30-96

STATE OF VIRGINIA  
COUNTY OF YORK  
IN THE CLERK'S OFFICE OF THE CIRCUIT COURT FOR THE COUNTY OF YORK THE 2 DAY OF May 1996, THIS PLAT WAS PRESENTED AND ADMITTED TO RECORD AS THE LAW DIRECTS IN PLAT BOOK 12 PAGE 873.

TESTE: *[Signature]*  
CLERK  
BY: *[Signature]*