


SUBDIVISION OF 10.167 ACRES±
OWNED BY
MICHAEL C. BROWN, LIMITED

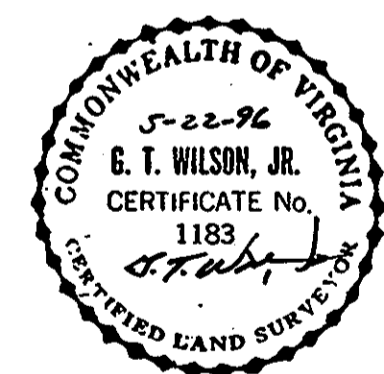
BRUTON DISTRICT YORK COUNTY VIRGINIA
 DATE: 5/22/96 SCALE: 1" = 100' DRAWN: CMA/KEG



5248 Olde Towne Road, Suite 1
 Williamsburg, Virginia 23188
 (804) 253-0040
 Fax (804) 220-8994
CONSULTING ENGINEERS
 SHEET 2 OF 2
 JOB NO. 8158

LEGEND

- PROPERTY LINE
- BUILDING SETBACK LINE (B.S.L. TYP.)
- EXISTING YORK COUNTY UTILITY EASEMENT
- PROPOSED DRAINAGE & UTILITY EASEMENT
- IRF IRON ROD FOUND
- IPF IRON PIPE FOUND
- IRS IRON ROD SET
- PROPERTY CORNER
- RESTRICTED ACCESS ESMT.
- △ PROPOSED WELL LOCATIONS, (TO BE APPROVED BY THE LOCAL HEALTH DEPT.)



APPROVED:
 YORK COUNTY BOARD OF SUPERVISORS

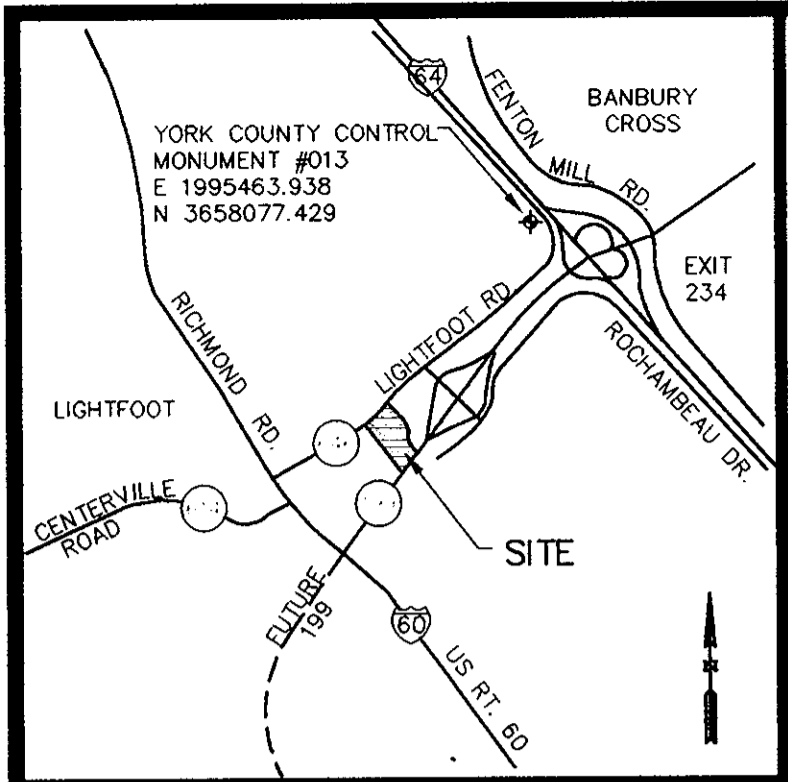
BY: [Signature], PLAT APPROVING AGENT
 DATE: 6-12-96

STATE OF VIRGINIA
 COUNTY OF YORK

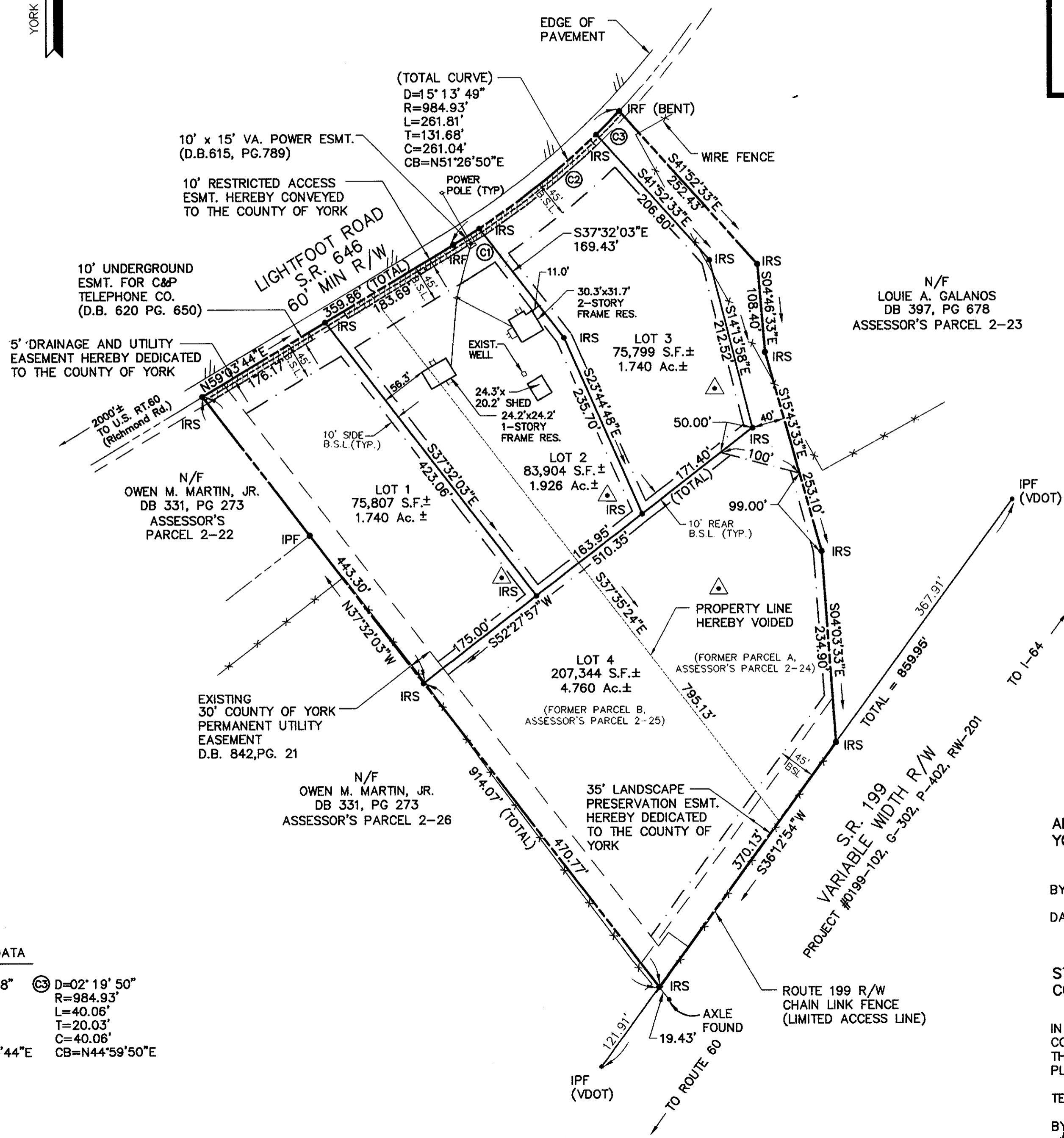
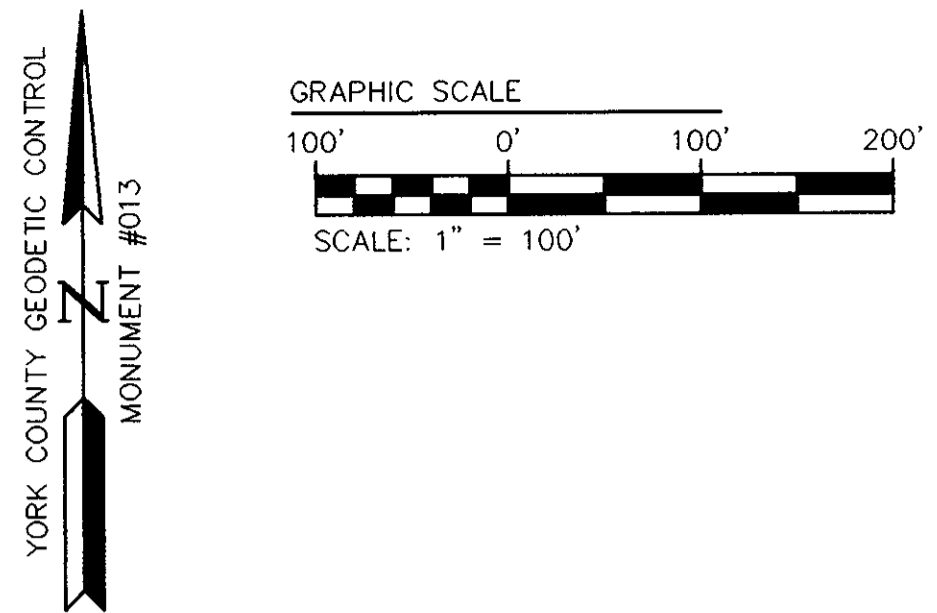
IN THE CLERK'S OFFICE OF THE CIRCUIT COURT FOR THE COUNTY OF YORK THE 13 DAY OF June, 1996
 THIS MAP WAS PRESENTED FOR RECORD AS THE LAW DIRECTS,
 PLAT BOOK 12, PAGE 381

TESTE: Nancy B. Kane, CLERK

BY: Catherine Bender, DC
Deed Book 900, Page 244



VICINITY MAP
 SCALE: 1" = 4000'



LOT CURVE DATA

① D=02° 12' 01"	② D=10° 41' 58"	③ D=02° 19' 50"
R=984.93'	R=984.93'	R=984.93'
L=37.82'	L=183.93'	L=40.06'
T=18.91'	T=92.23'	T=20.03'
C=37.82'	C=183.66'	C=40.06'
CB=N57°57'44"E	CB=N51°30'44"E	CB=N44°59'50"E