


SUBDIVISION OF **419**

WILLIAMSBURG COMMONS

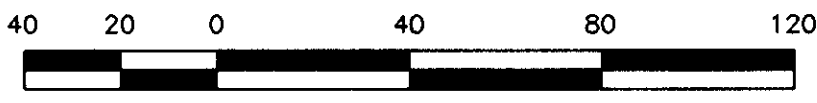
PHASE 1

BRUTON DISTRICT - COUNTY OF YORK

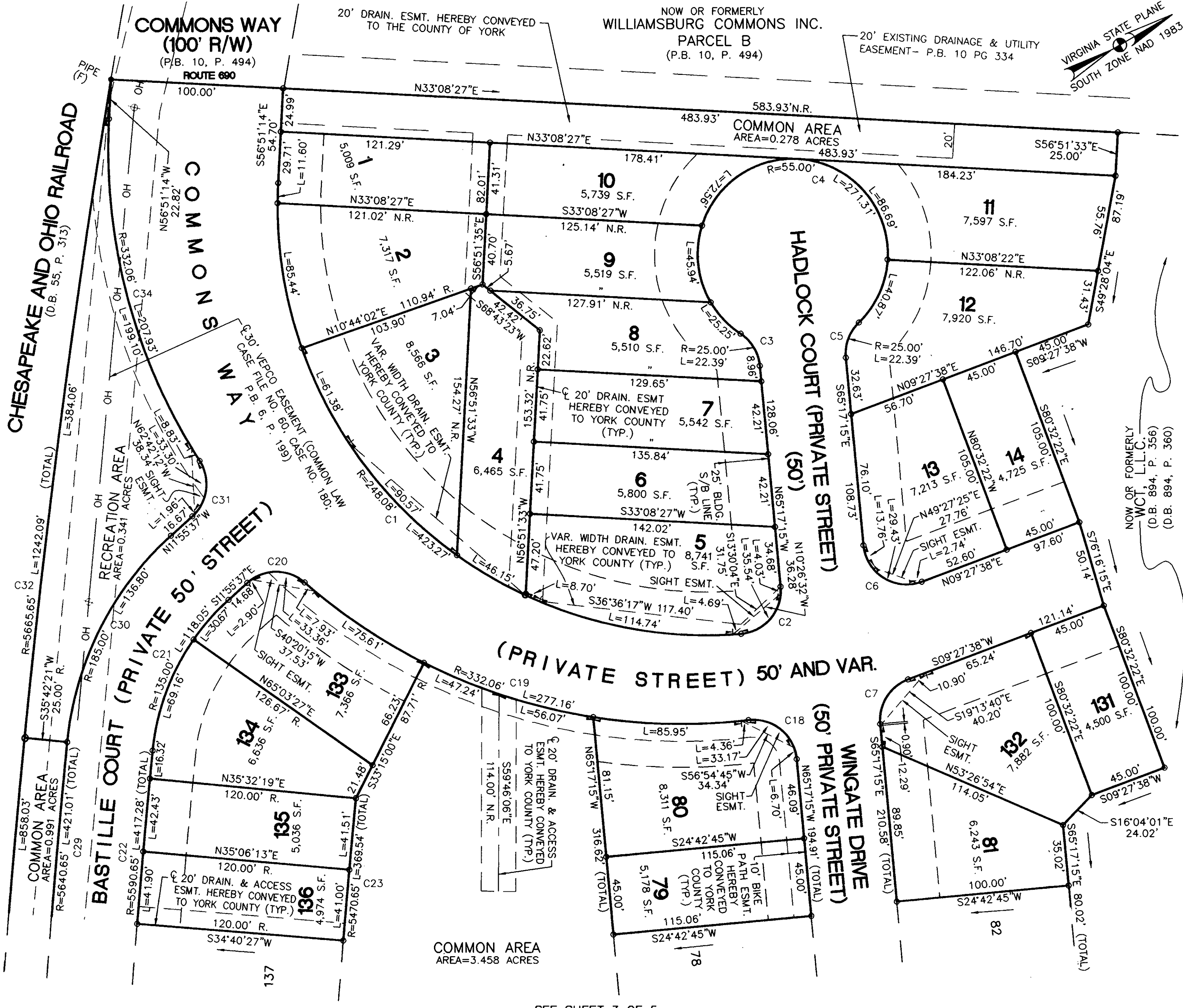


THE TAF GROUP
ARCHITECTURE • ENGINEERING • CONSTRUCTION
100 LANDMARK SQUARE • VIRGINIA BEACH, VA 23462
PHONE: (804) 340-0322 • FAX: (804) 496-6482

MAY 31, 1996
SHEET 2 OF 5



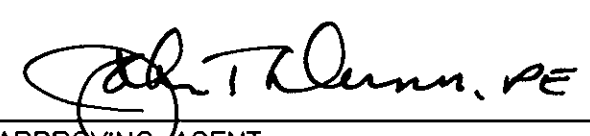
SCALE 1" = 40'



CURVE	RADIUS	LENGTH	TANGENT	CHORD	BEARING	DELTA
C1	248.08'	423.27'	284.16'	373.77'	N74°16'05"E	97°45'21"
C2	25.00'	39.57'	25.30'	35.56'	N19°56'55"W	90°40'40"
C3	25.00'	22.39'	12.01'	21.65'	S89°03'13"W	51°19'04"
C4	55.00'	271.31'	-	68.75'	N24°42'45"E	282°38'08"
C5	25.00'	22.39'	12.01'	21.65'	S39°37'43"E	51°19'04"
C6	25.00'	45.92'	32.73'	39.73'	N62°05'11"E	105°15'07"
C7	25.00'	32.62'	19.10'	30.35'	S27°54'49"E	74°44'53"
C8	25.00'	39.87'	25.61'	35.78'	S69°01'38"W	91°22'14"
C9	332.06'	277.16'	147.23'	269.18'	S47°15'12"W	47°49'24"
C10	25.00'	36.26'	22.15'	33.16'	S29°37'09"W	83°05'31"
C11	135.00'	99.83'	52.32'	97.57'	S33°06'38"E	42°22'03"
C12	5590.65'	417.28'	208.73'	417.18'	S56°25'57"E	04°16'35"
C13	5470.65'	369.54'	184.84'	369.47'	N56°23'48"W	03°52'13"
C14	5640.65'	421.01'	210.60'	420.91'	N56°25'57"W	04°16'35"
C15	185.00'	136.80'	71.70'	133.70'	N33°06'38"W	42°22'03"
C16	25.00'	35.26'	21.28'	32.41'	N52°19'46"W	80°48'19"
C17	5665.65'	1242.09'	623.54'	1239.60'	N56°41'27"W	12°33'40"
C18	332.06'	207.93'	107.50'	204.55'	N74°47'35"W	35°52'41"

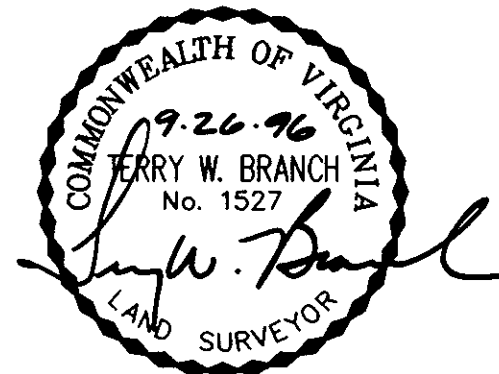


APPROVED:
YORK COUNTY BOARD
OF SUPERVISORS

BY:  **J. T. Quinn, PE**
PLAT APPROVING AGENT

DATE: 10/3/96

DRAWN BY:	JAH	DATE:	5/31/96
DRAFT CHK:	TWB	DATE:	9/25/96
COMP. CHK:	CAH	DATE:	5/31/96
ENG. CHK:	KGS	DATE:	5/31/96
DEPT. HEAD:	JQM	DATE:	
PROJECT NO.:	951200		
SCALE:	1"=40'		
FILE NO.:	A-7-903		



- LEGEND
- DENOTES EASEMENT/SETBACK
 - OH DENOTES OVERHEAD WIRES
 - DENOTES MONUMENT FOUND
 - DENOTES MONUMENT SET
 - DENOTES IRON PIN/PIPE FOUND
 - DENOTES IRON PIN SET

STATE OF VIRGINIA
COUNTY OF YORK

IN THE CLERK'S OFFICE OF THE CIRCUIT COURT FOR THE COUNTY OF YORK, VIRGINIA THIS MAP WAS PRESENTED AND ADMITTED TO RECORD AS THE LAW DIRECTS THIS 20 DAY OF Nov 19 96 IN PLAT BOOK 12 PAGE 49 11:15

TESTE: Nancy B. Kara, Clerk CLERK.
BY: J. T. Quinn, PE

SEE SHEET 3 OF 5