
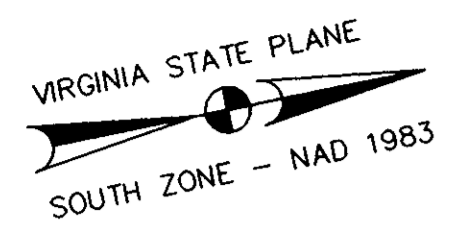


SUBDIVISION OF 421
WILLIAMSBURG COMMONS
PHASE 1

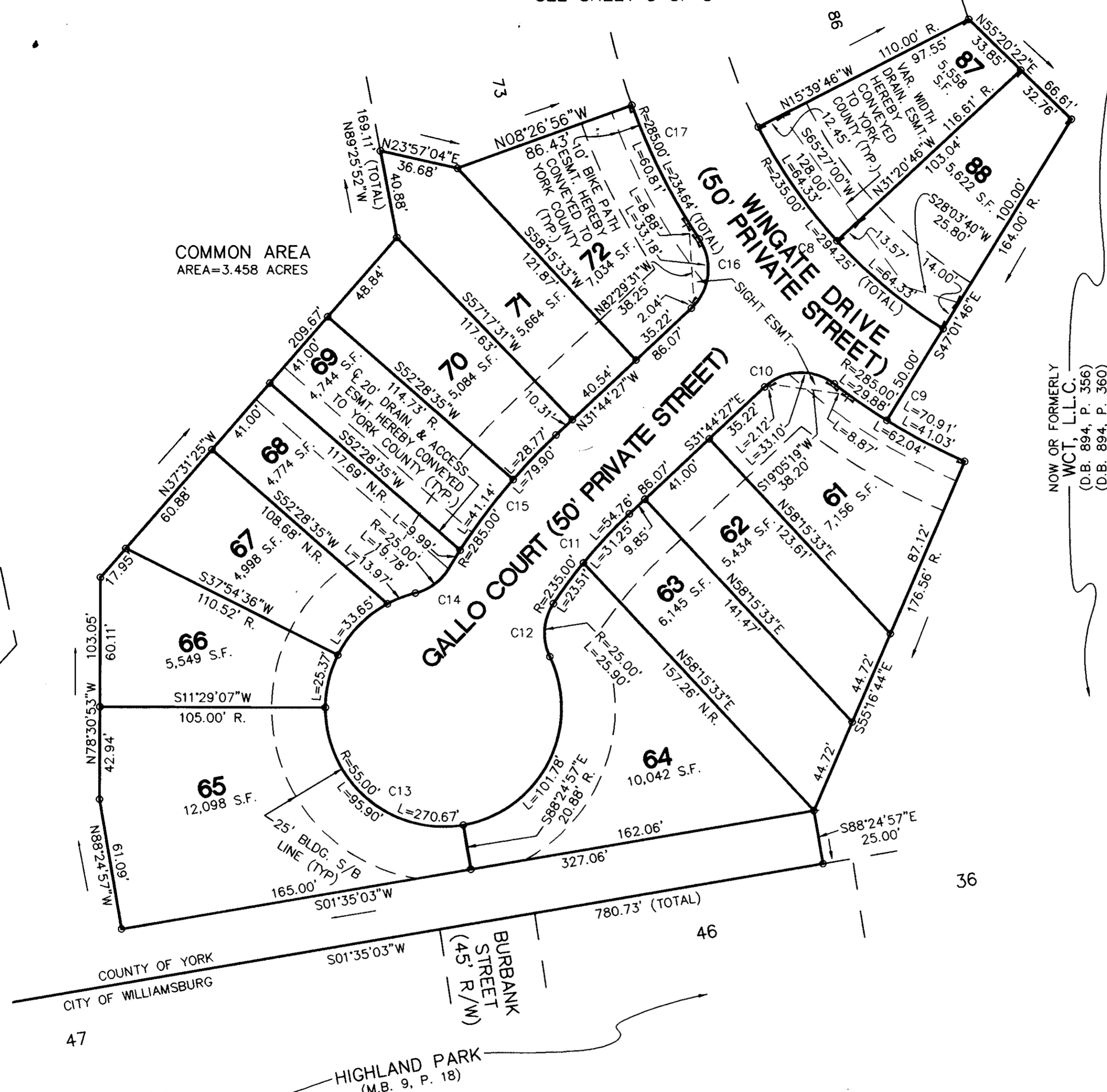
BRUTON DISTRICT - COUNTY OF YORK



THE TAF GROUP
ARCHITECTURE • ENGINEERING • CONSTRUCTION
100 LANDMARK SQUARE • VIRGINIA BEACH, VA 23452
PHONE: (804) 340-0322 • FAX: (804) 498-8482



SEE SHEET 3 OF 5

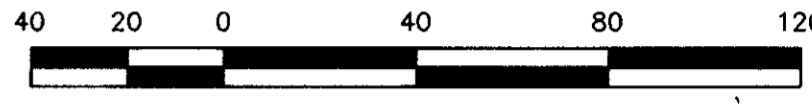


COMMON AREA
AREA=3.458 ACRES

147
148
149
150
151
152
153

SEE SHEET 5 OF 5

MAY 31, 1996
SHEET 4 OF 5



SCALE 1" = 40'

CURVE	RADIUS	LENGTH	TANGENT	CHORD	BEARING	DELTA
C8	235.00'	294.25'	169.93'	275.40'	N78°50'29"E	71°44'31"
C9	285.00'	70.91'	35.64'	70.73'	S41°50'57"W	14°15'23"
C10	25.00'	35.22'	21.25'	32.38'	S08°37'05"W	80°43'06"
C11	235.00'	54.76'	27.50'	54.63'	S38°24'58"E	13°21'01"
C12	25.00'	25.90'	14.25'	24.76'	S74°46'10"E	59°21'25"
C13	55.00'	270.67'	-	69.25'	S36°32'09"W	281°58'03"
C14	25.00'	19.78'	10.44'	19.26''	N25°08'31"W	45°19'21"
C15	285.00'	79.90'	40.21'	79.63'	N39°46'19"W	16°03'44"
C16	25.00'	35.22'	21.25'	32.38'	N72°06'00"W	80°43'06"
C17	285.00'	234.64'	124.43'	288.07'	N88°52'24"W	47°10'18"

NOW OR FORMERLY
WCT, L.L.C.
(D.B. 894, P. 356)
(D.B. 894, P. 360)

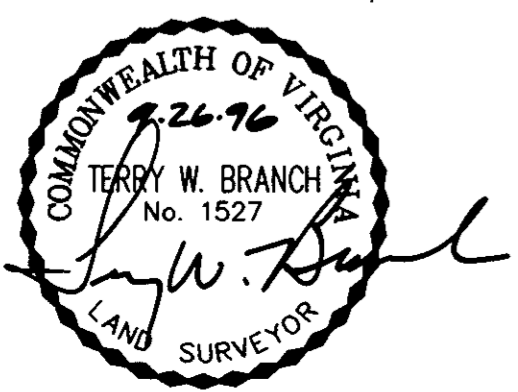
APPROVED:
YORK COUNTY BOARD
OF SUPERVISORS

BY: John T. Dunn, PE
PLAT APPROVING AGENT

DATE: 10/31/96

- LEGEND**
- DENOTES EASEMENT/SETBACK
 - OH — DENOTES OVERHEAD WIRES
 - DENOTES MONUMENT FOUND
 - DENOTES MONUMENT SET
 - DENOTES IRON PIN/PIPE FOUND
 - DENOTES IRON PIN SET

DRAWN BY:	JAH	DATE:	5/31/96
DRAFT CHK:	TWB	DATE:	5/31/96
COMP. CHK:	CAH	DATE:	5/31/96
ENG. CHK:	KGS	DATE:	5/31/96
DEPT. HEAD:	JOM	DATE:	
PROJECT NO.:	951200		
SCALE:	1"=40'		
FILE NO.:	A-7-903		



STATE OF VIRGINIA
COUNTY OF YORK,

IN THE CLERK'S OFFICE OF THE CIRCUIT COURT FOR THE COUNTY OF YORK, VIRGINIA THIS MAP WAS PRESENTED AND ADMITTED TO RECORD AS THE LAW DIRECTS THIS 30 DAY OF Nov 1996 IN PLAT BOOK 12 PAGE 421 11:15

TESTE: Nancy B. Kane Clerk CLERK.

BY: [Signature]