

CALLAHAN VILLAGE DUPLEXES

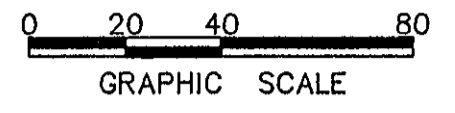
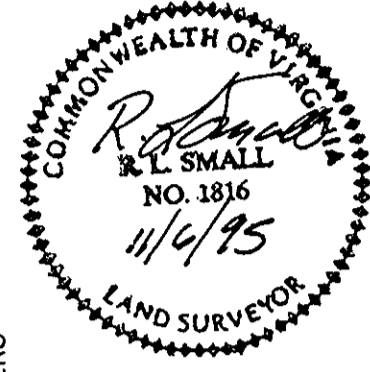
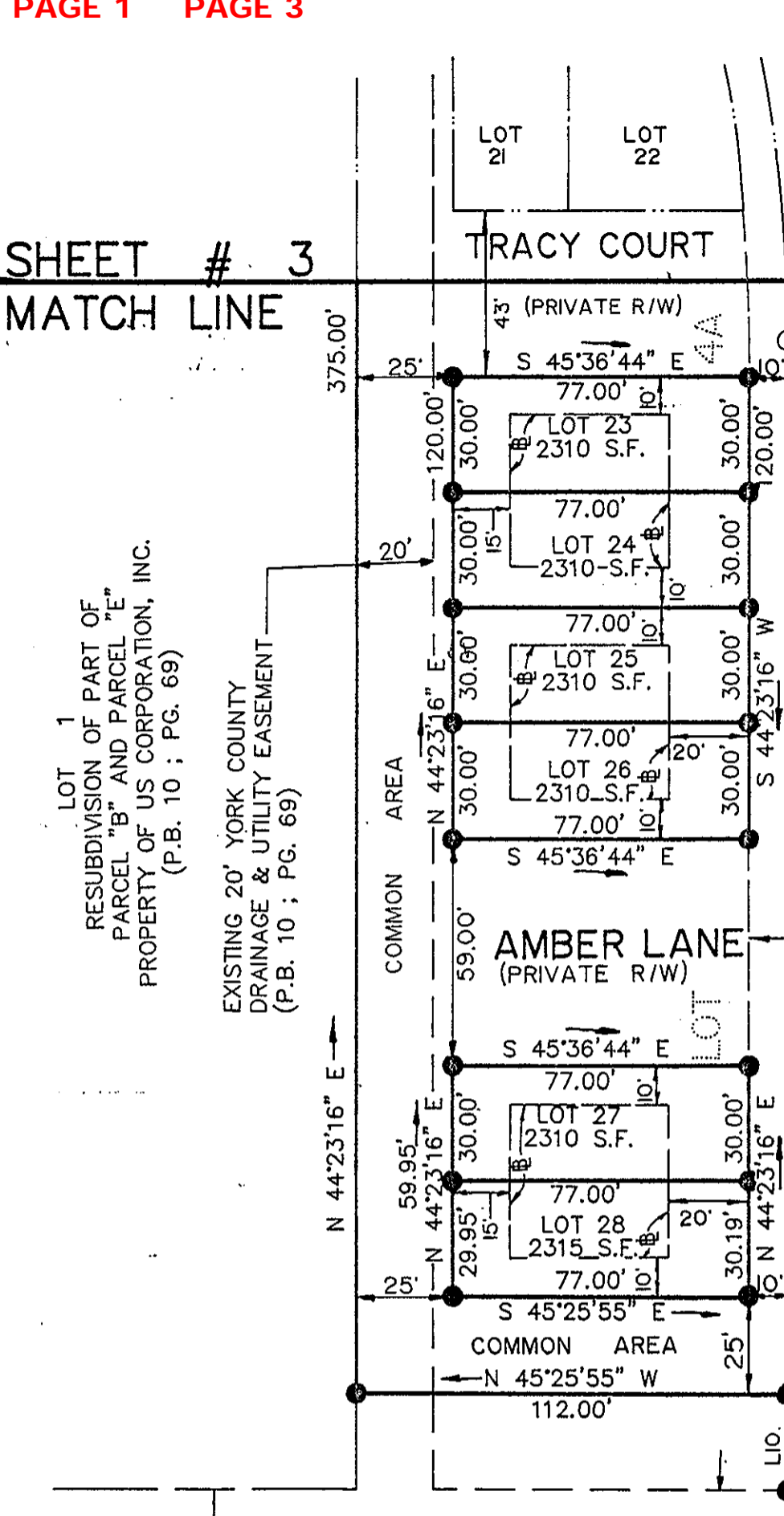
COUNTY OF YORK, VIRGINIA

SCALE : 1" = 40' DATE : 6 NOV. 1995

SHEET # 3

NOW OR FORMERLY
COUNTRY CLUB PARTNERS
(P.B. 9 ; PG. 571)

SHEET # 3



GRAPHIC SCALE
SHEET 2 OF 3
DAVIS & ASSOCIATES
SURVEYORS - PLANNERS
4033 GEO. WASH. MEM. HWY.
YORKTOWN, VIRGINIA 23692
(804) 898-9414

- SYMBOLS -

- DENOTES IRON ROD SET
- DENOTES IRON ROD FOUND
- DENOTES PIPE FOUND
- DENOTES MINIMUM BUILDING SETBACK LINE
- DENOTES DRAINAGE AND / OR UTILITIES EASEMENT HEREBY CONVEYED TO COUNTY OF YORK

NOW OR FORMERLY
COUNTRY CLUB APARTMENTS
(D.B. 325 ; PG. 351)

18' x 25' TURNAROUND EASEMENTS
HEREBY CONVEYED TO THE CALLAHAN
VILLAGE DUPLEXES HOMEOWNERS
ASSOCIATION

10' WATERLINE EASEMENT
HEREBY CONVEYED TO NEWPORT
NEWS WATERWORKS

20' UTILITY EASEMENT
HEREBY CONVEYED TO
COUNTY OF YORK



A.P.P.R.O.V.E.D.

YORK COUNTY BOARD OF SUPERVISORS

BY : John T. Quinn, PE
PLAT APPROVING AGENT

DATE : 3-3-97

COLONIAL COMMUNITY
SERVICES BOARD
(D.B. 647 ; PG. 108)

LOT 3B
SUBDIVISION OF LOT 3
WE CORPORATION
(FORMERLY US CORPORATION)
(P.B. 12, PG. 71)

LOT 3A
SUBDIVISION OF LOT 3
WE CORPORATION
(FORMERLY US CORPORATION)
(P.B. 12, PG. 71)

LOT 2
SUBDIVISION OF THE PROPERTY
US CORPORATION
(P.B 10 ; PG. 172)

MERRIMAC TRAIL
(STATE ROUTE #143 / 140' R/W)

STATE OF VIRGINIA
COUNTY OF YORK
IN THE CLERK'S OFFICE OF THE CIRCUIT
COURT FOR THE COUNTY OF YORK THE 3rd
DAY OF March, 1997, THIS MAP WAS
PRESENTED AND ADMITTED TO RECORD AS
THE LAW DIRECTS IN PLAT BOOK 12
PAGE 447.

TESTE : Nancy B. Kane, Clerk
CLERK
BY : Quade S. Hughes D.C.