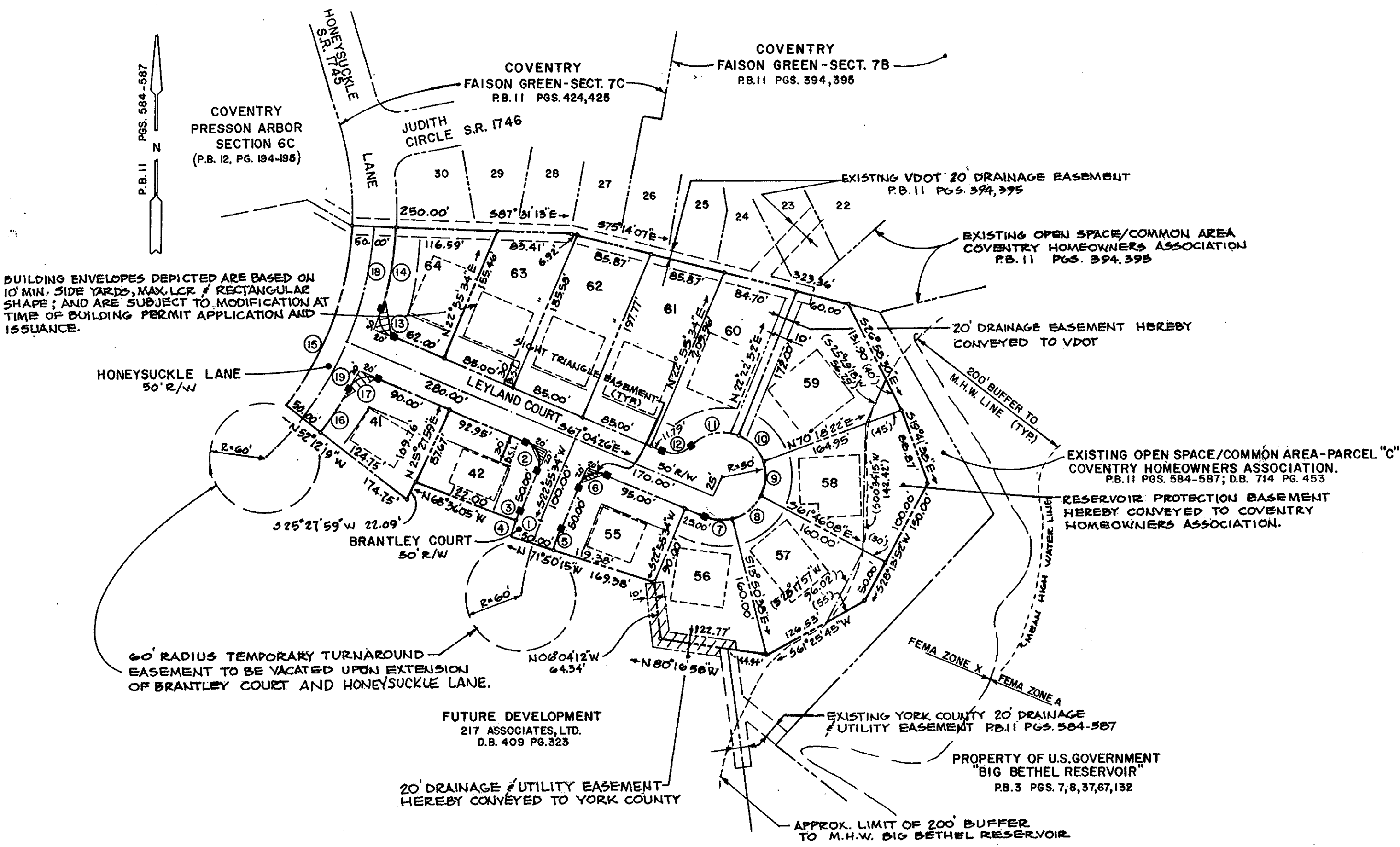
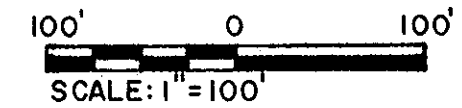


RECORD PLAT
 COVENTRY PLANNED DEVELOPMENT
 PRESSON ARBOR
 SECTION 6A-2

COUNTY OF YORK, VIRGINIA
 CAMPBELL LAND SURVEYING, INC.
 P.O. BOX 855
 YORKTOWN, VIRGINIA 23692
 (757) 890-0837

SCALE: 1"=100' OCTOBER 28, 1994
 SHEET 2 OF 2

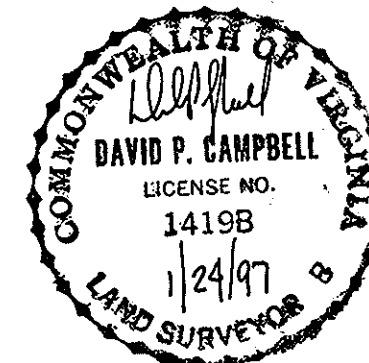
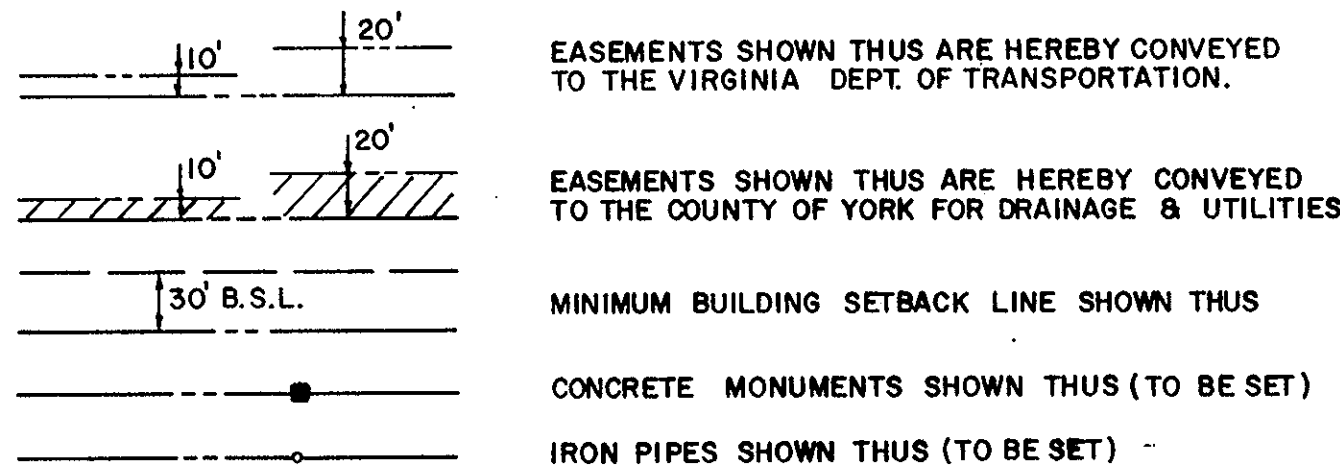


MAXIMUM LOT COVERAGE		
LOT NO.	LOT AREA (SF)	COVERAGE (LCR=0.25)
41	10,861	2,715
42	10,169	2,542
55	11,257	2,814
56	14,400	3,600
67	17,063	4,263
58	19,005	4,751
59	19,617	4,904
60	16,292	4,073
61	17,329	4,332
62	16,293	4,073
63	14,556	3,639
64	12,914	3,229

CURVE DATA

	DELTA	RADIUS	LENGTH	TANGENT	CHORD BEARING	CHORD DIST.
1	04° 45' 49"	325.00'	27.02'	13.52'	S 20° 32' 39" E	27.01'
2	90° 00' 00"	25.00'	39.27'	25.00'	S 22° 04' 26" E	35.36'
3	01° 31' 39"	350.00'	9.33'	4.67'	S 22° 09' 45" W	9.33'
4	03° 14' 10"	350.00'	19.77'	9.89'	N 19° 46' 50" E	19.77'
5	04° 45' 49"	300.00'	24.94'	12.48'	N 20° 32' 39" E	24.94'
6	90° 00' 00"	25.00'	39.27'	25.00'	N 67° 55' 34" E	35.36'
7	36° 46' 13"	50.00'	32.09'	16.62'	S 85° 27' 32" E	31.54'
8	47° 55' 30"	50.00'	41.82'	22.22'	N 52° 11' 37" E	40.61'
9	47° 55' 30"	50.00'	41.82'	22.22'	N 04° 16' 07" E	40.61'
10	47° 55' 30"	50.00'	41.82'	22.22'	N 43° 39' 23" W	40.61'
11	67° 25' 50"	50.00'	58.85'	33.37'	S 78° 39' 57" W	55.51'
12	67° 58' 33"	30.00'	35.59'	20.23'	S 78° 56' 18" W	33.54'
13	83° 14' 37"	25.00'	36.32'	22.21'	N 25° 27' 07" W	33.21'
14	13° 41' 25"	400.00'	95.58'	48.02'	N 09° 19' 29" E	95.35'
15	35° 18' 54"	350.00'	215.73'	111.41'	N 20° 08' 14" E	212.33'
16	08° 06' 44"	400.00'	56.63'	28.36'	N 33° 44' 19" E	56.59'
17	83° 14' 37"	25.00'	36.32'	22.21'	N 71° 18' 15" E	33.21'
18	20° 26' 47"	375.00'	133.83'	67.63'	S 12° 42' 10" W	133.11'
19	14° 52' 07"	375.00'	97.31'	48.93'	S 30° 21' 37" W	97.04'

LEGEND



APPROVED
 YORK COUNTY BOARD OF SUPERVISORS

By: John T. Quinn, PE
 PLAT APPROVING AGENT

Date: 3-18-97

STATE OF VIRGINIA
 COUNTY OF YORK

IN THE CLERK'S OFFICE OF THE CIRCUIT COURT FOR THE COUNTY OF YORK THE 20th DAY OF March 1997
 THIS MAP WAS PRESENTED AND ADMITTED TO RECORD AS THE LAW DIRECTS IN PLAT BOOK 12, PAGE 457

TESTE: Nancy B. Kane 11:02 A.M.
 CLERK

BY: Jeri Langham D.C.