

[Signature] D.C.

LIMITED ACCESS HIGHWAY By Resolution of State Highway and Transportation Commission dated 10-04-96

REVISED	FHWA REGION	STATE	FEDERAL AID PROJECT	ROUTE	STATE PROJECT	SHEET NO.
04/18/96	3	VA		64	0064-099-106, RW-201 C-501	6

DESIGN FEATURES RELATING TO CONSTRUCTION OR TO REGULATION AND CONTROL OF TRAFFIC MAY BE SUBJECT TO CHANGE AS DEEMED NECESSARY BY THE DEPARTMENT

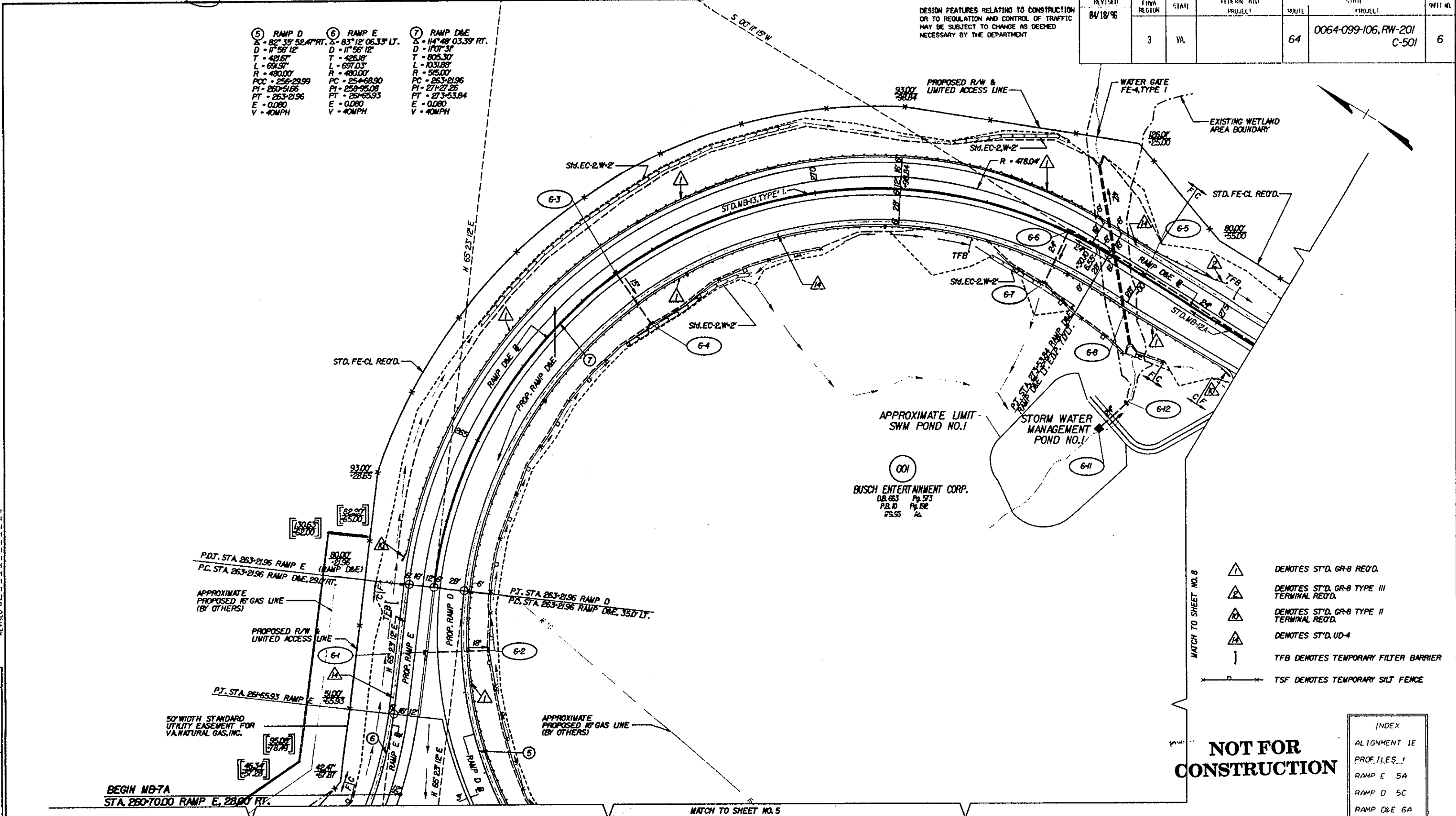
- ⑤ RAMP D
Δ = 82° 33' 52.47" RT. Δ = 83° 12' 06.33" LT.
D = 11° 56' 12"
T = 421.67
L = 691.97
R = 480.00
PCC = 256-23.99
PI = 260-51.66
PT = 263-21.96
E = 0.080
V = 40MPH
- ⑥ RAMP E
Δ = 83° 12' 06.33" LT.
D = 11° 56' 12"
T = 426.18
L = 697.03
R = 480.00
PC = 254-68.90
PI = 258-95.08
PT = 261-65.93
E = 0.080
V = 40MPH
- ⑦ RAMP D&E
Δ = 114° 48' 03.39" RT.
D = 11° 07' 31"
T = 805.30
L = 1031.88
R = 515.00
PC = 263-21.96
PI = 271-27.26
PT = 273-53.84
E = 0.080
V = 40MPH

Gannett Fleming ENGINEERS AND PLANNERS



SUPERVISED BY: DESIGNED BY: CADD OPERATOR: REVISED BY:

PLAN	
DATE	
BY	
NO.	



- ▲ DENOTES ST'D. GR-B REQ'D.
- ▲ DENOTES ST'D. GR-B TYPE III TERMINAL REQ'D.
- ▲ DENOTES ST'D. GR-B TYPE II TERMINAL REQ'D.
- ▲ DENOTES ST'D. UD-4
-] TFB DENOTES TEMPORARY FILTER BARRIER
- TSF DENOTES TEMPORARY SILT FENCE

NOT FOR CONSTRUCTION

INDEX	
ALIGNMENT 1E	
PROFILES 1	
RAMP E 5A	
RAMP D 5C	
RAMP D&E 6A	
DRAINAGE DESCR. 8B	
STORM WATER MANAGEMENT 6B	

Denotes Construction Limits In Cuts
Denotes Construction Limits In Fills

SCALE 0 50 100