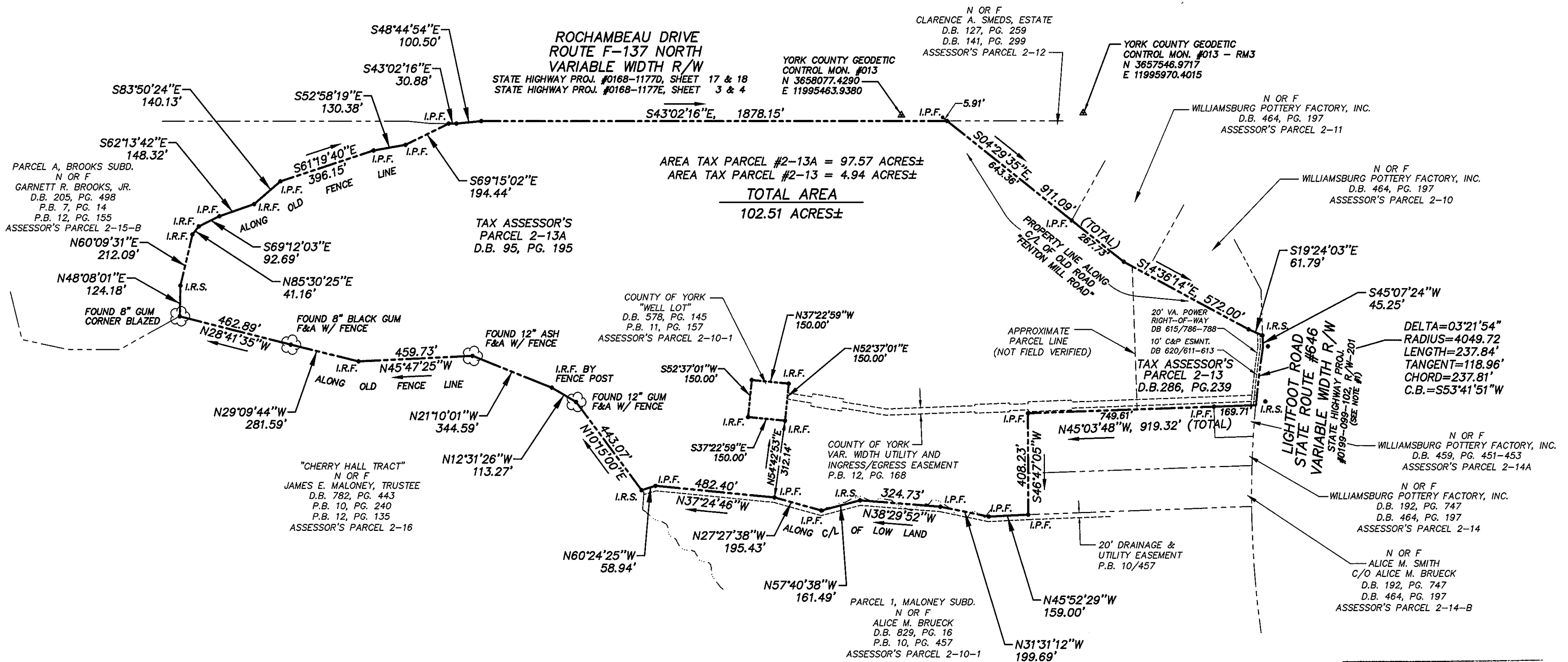


NOTE:
THIS PLAT MADE TO AGREE WITH RECORDED PLATS AND
FOUND GROUND EVIDENCE AS NEAR AS POSSIBLE.
DIVISION LINE BETWEEN PARCEL 2-13 & 2-13A HAS NOT
BEEN ESTABLISHED. AREA IS TOTAL OF BOTH PARCELS.



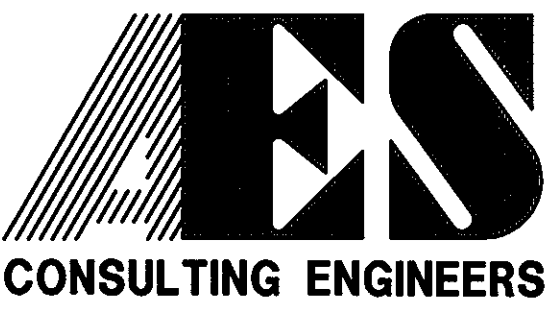
Plat Book No. 12 Page 560

Filed in the Clerk's Office, Circuit Court, York Co., Va. the 3rd day of Feb. 1998

Teste:
Nancy B. Kane, Clerk
Rhea Hernandez D.C.

YORK COUNTY
APPROVED FOR RECORDATION
BY: *[Signature]*
TITLE: Director, Env. & Devel. Sys.
DATE: Feb. 3, 1998

NOTE:
RIGHT-OF-WAY BASED UPON PHYSICAL CENTERLINE OF
ROAD AND DEED RECORDED AT D.B. 624, PAGE 318-319
AND MAP RECORDED AT STATE HIGHWAY P.B. 6, PG. 237-238.



5248 Olde Towne Road, Suite 1
Williamsburg, Virginia 23188
(757) 253-0040
Fax (757) 220-8994

PLAT OF SURVEY
A PARCEL CONTAINING 102.51 ACRES±
OWNED BY
ASPEN P. LEE & BLANCHE B. LEE

BRUTON DISTRICT YORK COUNTY VIRGINIA



No.	DATE	REVISION / COMMENT / NOTE	BY

Designed GTW, JR.	Drawn CMA
Scale 1" = 300'	Date 1/8/98
Project No. 8430	
Drawing No. 1 OF 1	