

PLAT SHOWING RESUBDIVISION OF WHITTAKERS MILL TRACT

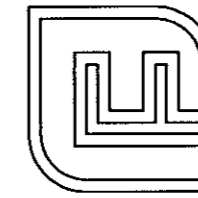
BRUTON DISTRICT YORK COUNTY, VIRGINIA

DATE: 05/28/98 SCALE: 1"=200'

SHEET 4 OF 6

VIRGINIA STATE GRID YORK COUNTY DATUM

MATCH LINE SEE SHEET 2

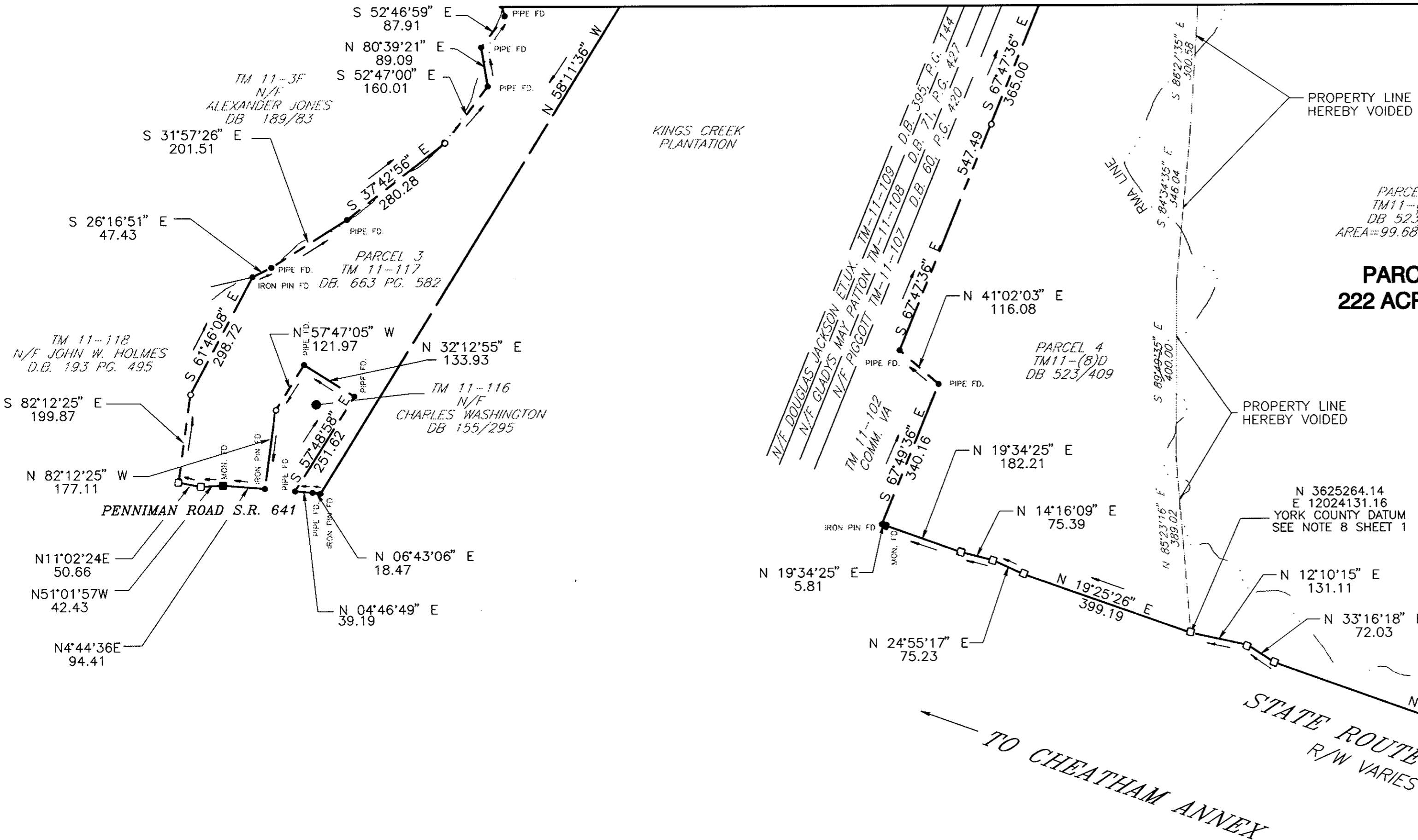
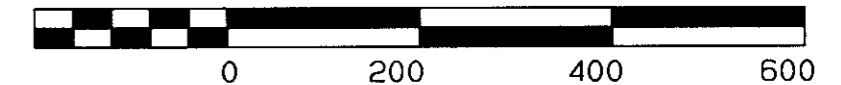


Langley and McDonald, P.C.

Engineers · Surveyors · Planners
Landscape Architects · Environmental Consultants
VIRGINIA BE ACH WILLIAMSBURG

201 PACKETS COURT
WILLIAMSBURG, VA 23185
(804) 253-2975

GRAPHIC SCALE 1"=200'

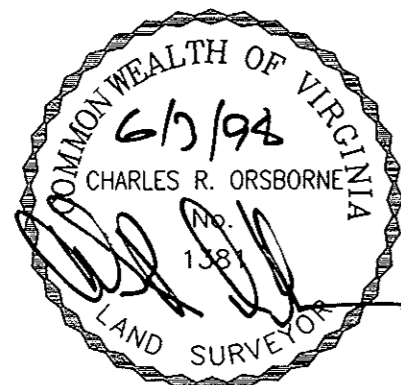
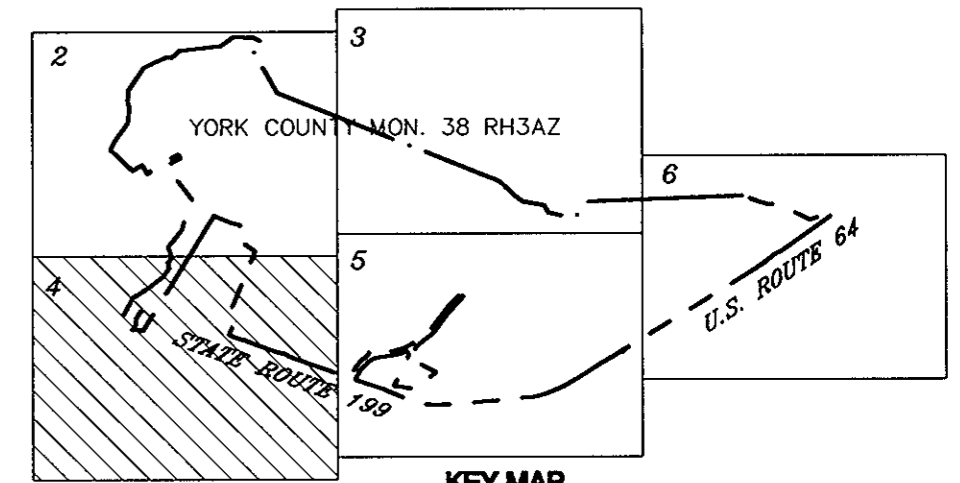
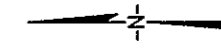


PARCEL 8
TM 11-(8)D
DB 523/406
AREA=99.68 Ac. +/-

**PARCEL 2
222 ACRES +/-**

STATE ROUTE 199
R/W VARIES

MATCH LINE SEE SHEET 5



APPROVED:
YORK COUNTY BOARD OF SUPERVISORS
BY: Al Maddalena 7/1/98
PLAT APPROVING AGENT

STATE OF VIRGINIA
COUNTY OF YORK
IN THE CLERK'S OFFICE OF THE CIRCUIT COURT FOR THE
COUNTY OF YORK THIS 2nd DAY OF July 1998 THIS
MAP WAS PRESENTED AND ADMITTED TO RECORD AS THE LAW
DIRECTS IN PLAT BOOK 12 PAGE 600 3:45
TESTE: Nancy B. Kage, Clerk
CLERK
BY: [Signature]