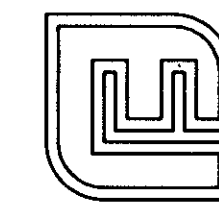


**SUBDIVISION OF PARCEL 1,  
BEING A PORTION OF PLAT SHOWING  
RESUBDIVISION OF  
WHITTAKER'S MILL TRACT**  
LOCATED IN  
BRUTON DISTRICT YORK COUNTY, VIRGINIA  
DATE: MARCH 16, 1998



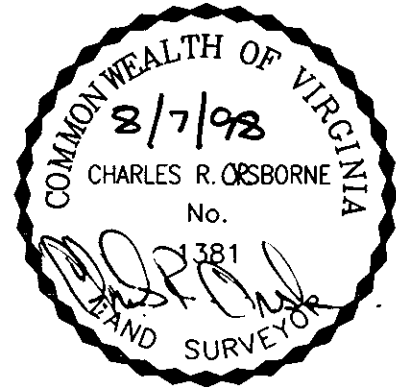
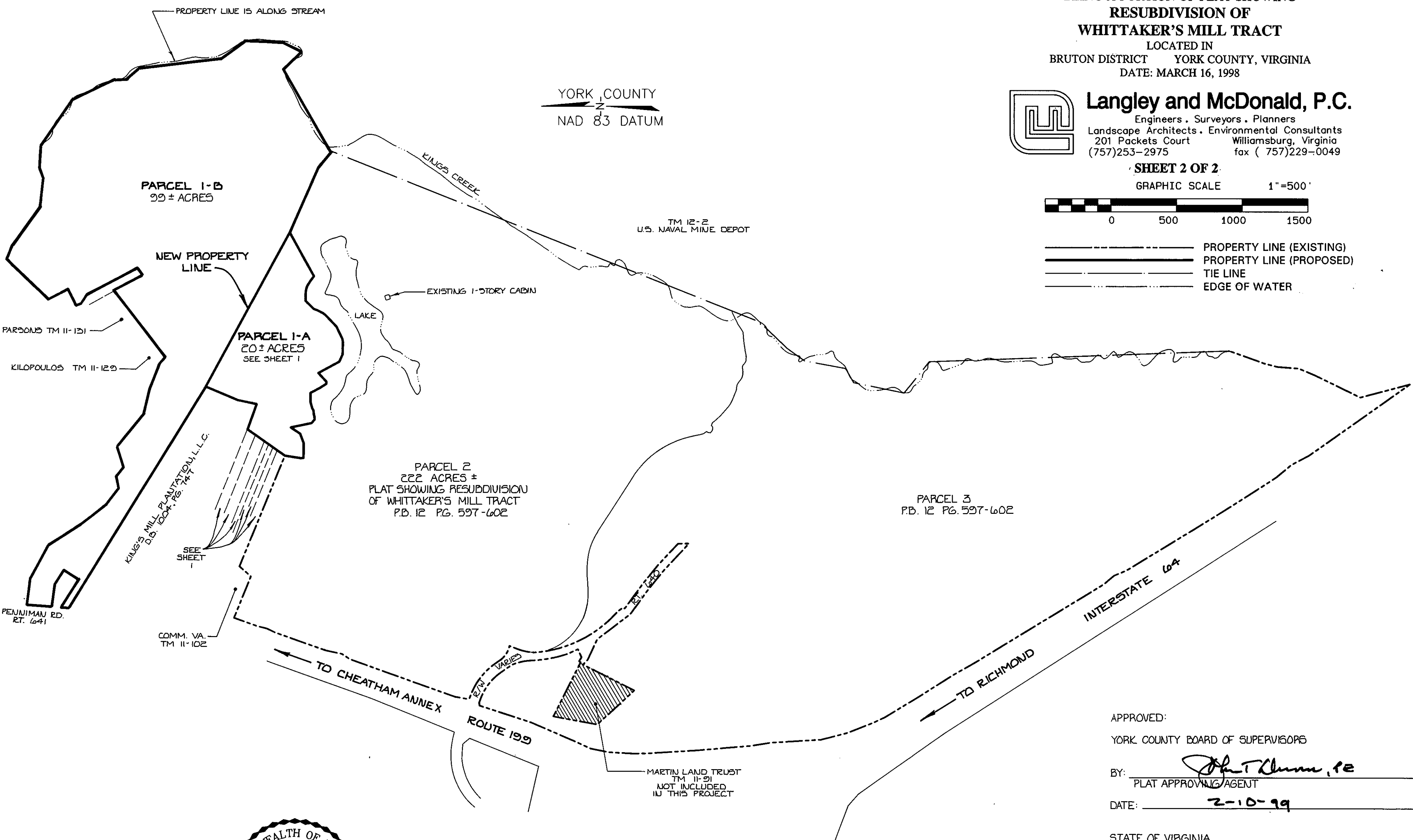
**Langley and McDonald, P.C.**  
Engineers . Surveyors . Planners  
Landscape Architects . Environmental Consultants  
201 Packets Court Williamsburg, Virginia  
(757)253-2975 fax ( 757)229-0049

**SHEET 2 OF 2**

GRAPHIC SCALE 1"=500'



- PROPERTY LINE (EXISTING)
- PROPERTY LINE (PROPOSED)
- TIE LINE
- EDGE OF WATER



APPROVED:  
YORK COUNTY BOARD OF SUPERVISORS  
BY: John T. Krumm, PE  
PLAT APPROVING AGENT  
DATE: 2-10-99

STATE OF VIRGINIA  
COUNTY OF YORK  
IN THE CLERK'S OFFICE OF THE CIRCUIT COURT FOR THE  
COUNTY OF YORK THE 11<sup>th</sup> DAY OF Feb. 1999 THIS  
MAP WAS PRESENTED AND ADMITTED TO RECORD AS THE LAW  
DIRECTS IN PLAT BOOK 12 PAGE 675  
TESTE: NANCY B. KANE, CLERK  
CLERK  
BY: Kristen N. Nelson, D.C.