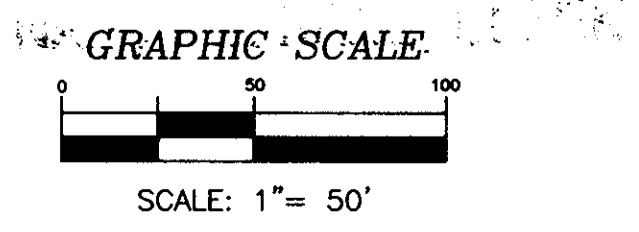
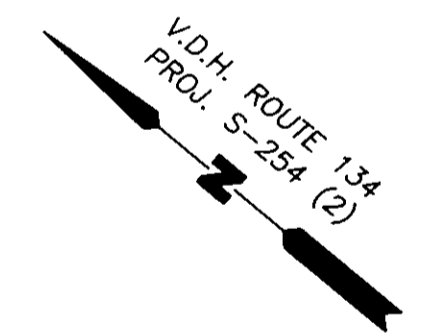
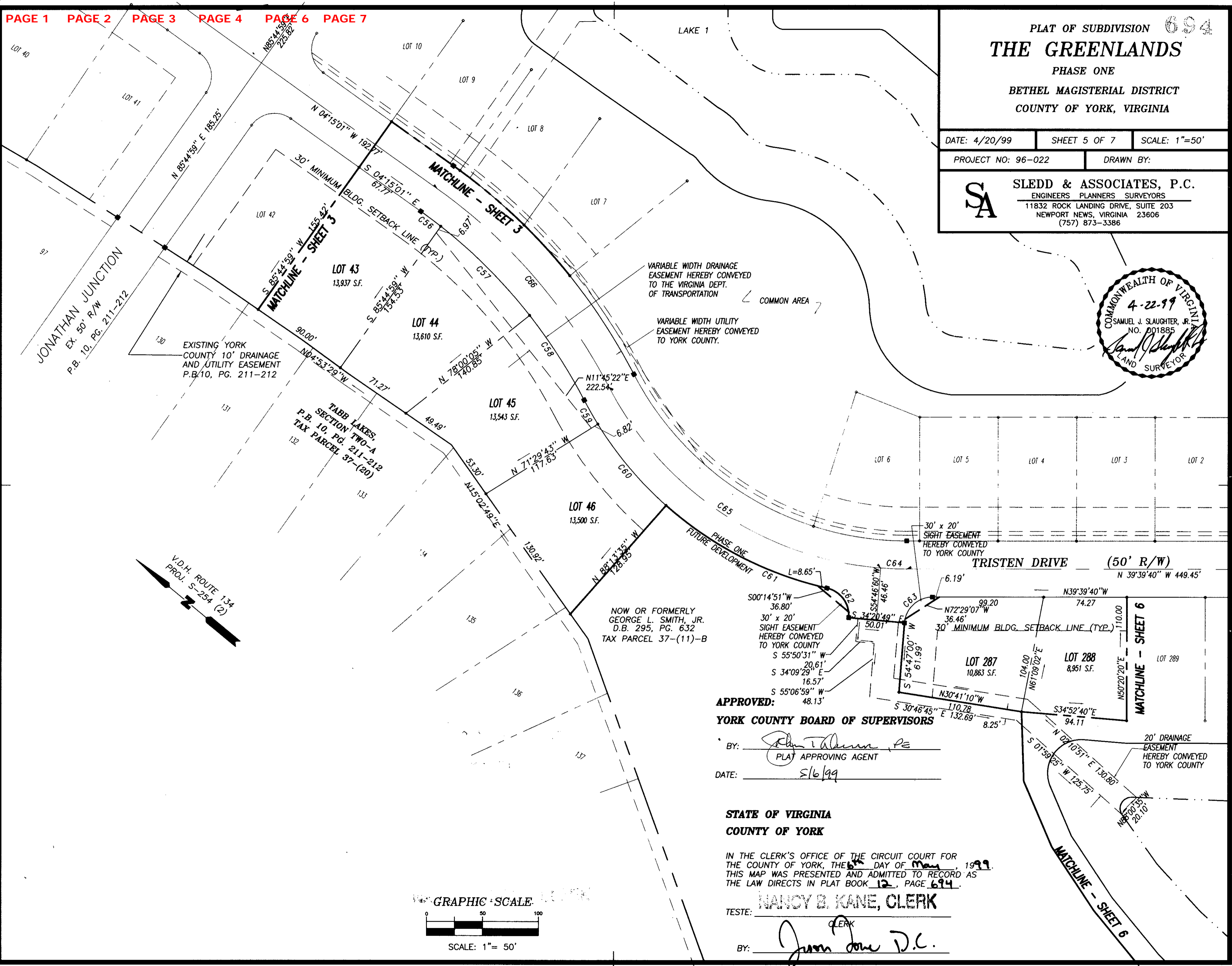
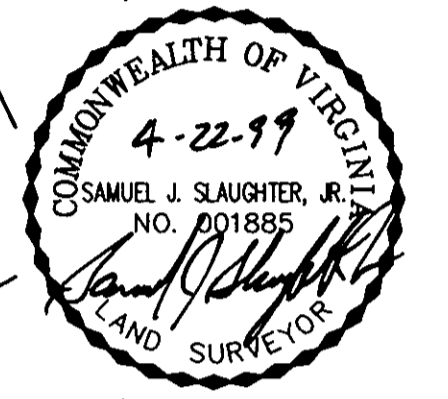


PLAT OF SUBDIVISION **694**  
**THE GREENLANDS**  
 PHASE ONE  
 BETHEL MAGISTERIAL DISTRICT  
 COUNTY OF YORK, VIRGINIA

DATE: 4/20/99 SHEET 5 OF 7 SCALE: 1"=50'

PROJECT NO: 96-022 DRAWN BY:

**SA SLEDD & ASSOCIATES, P.C.**  
 ENGINEERS PLANNERS SURVEYORS  
 11832 ROCK LANDING DRIVE, SUITE 203  
 NEWPORT NEWS, VIRGINIA 23606  
 (757) 873-3386



**APPROVED:**  
**YORK COUNTY BOARD OF SUPERVISORS**  
 BY: John L. Adams, PE  
 PLAT APPROVING AGENT  
 DATE: 5/6/99

**STATE OF VIRGINIA**  
**COUNTY OF YORK**  
 IN THE CLERK'S OFFICE OF THE CIRCUIT COURT FOR  
 THE COUNTY OF YORK, THE 6<sup>th</sup> DAY OF May, 1999.  
 THIS MAP WAS PRESENTED AND ADMITTED TO RECORD AS  
 THE LAW DIRECTS IN PLAT BOOK 12, PAGE 694.  
**NANCY B. KANE, CLERK**  
 TESTE: \_\_\_\_\_  
 BY: Joan Jane D.C.