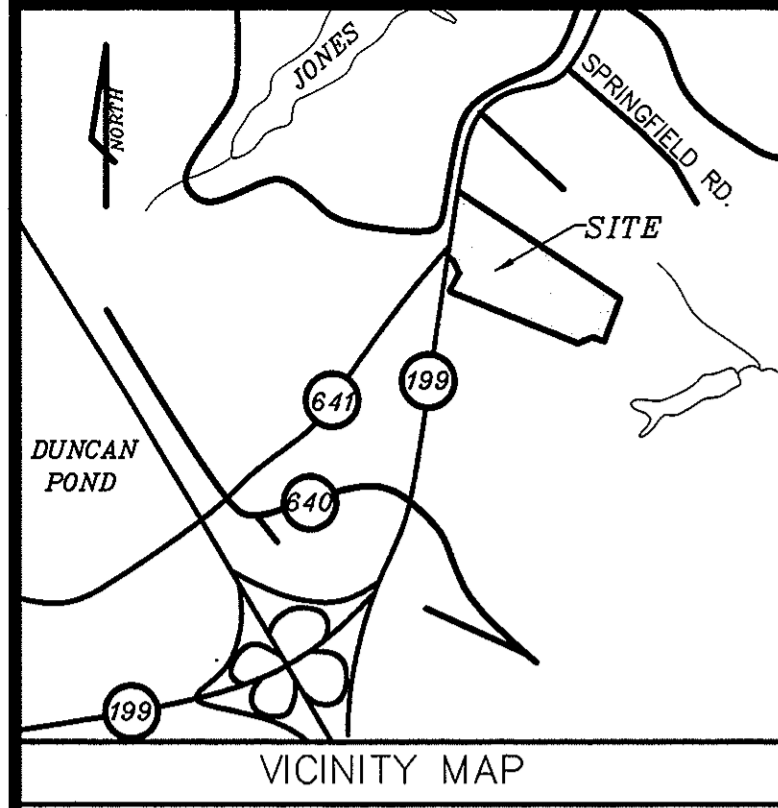


PLAT OF EASEMENT DEDICATION
 FROM
 KINGS CREEK PLANTATION, L.L.C.
 TO THE
 COUNTY OF YORK, VIRGINIA
 BEING
 KINGS CREEK PLANTATION, PHASE 1-SPA
 BRUTON MAGISTERIAL DISTRICT
 YORK COUNTY, VIRGINIA
 DATE: 12/08/98

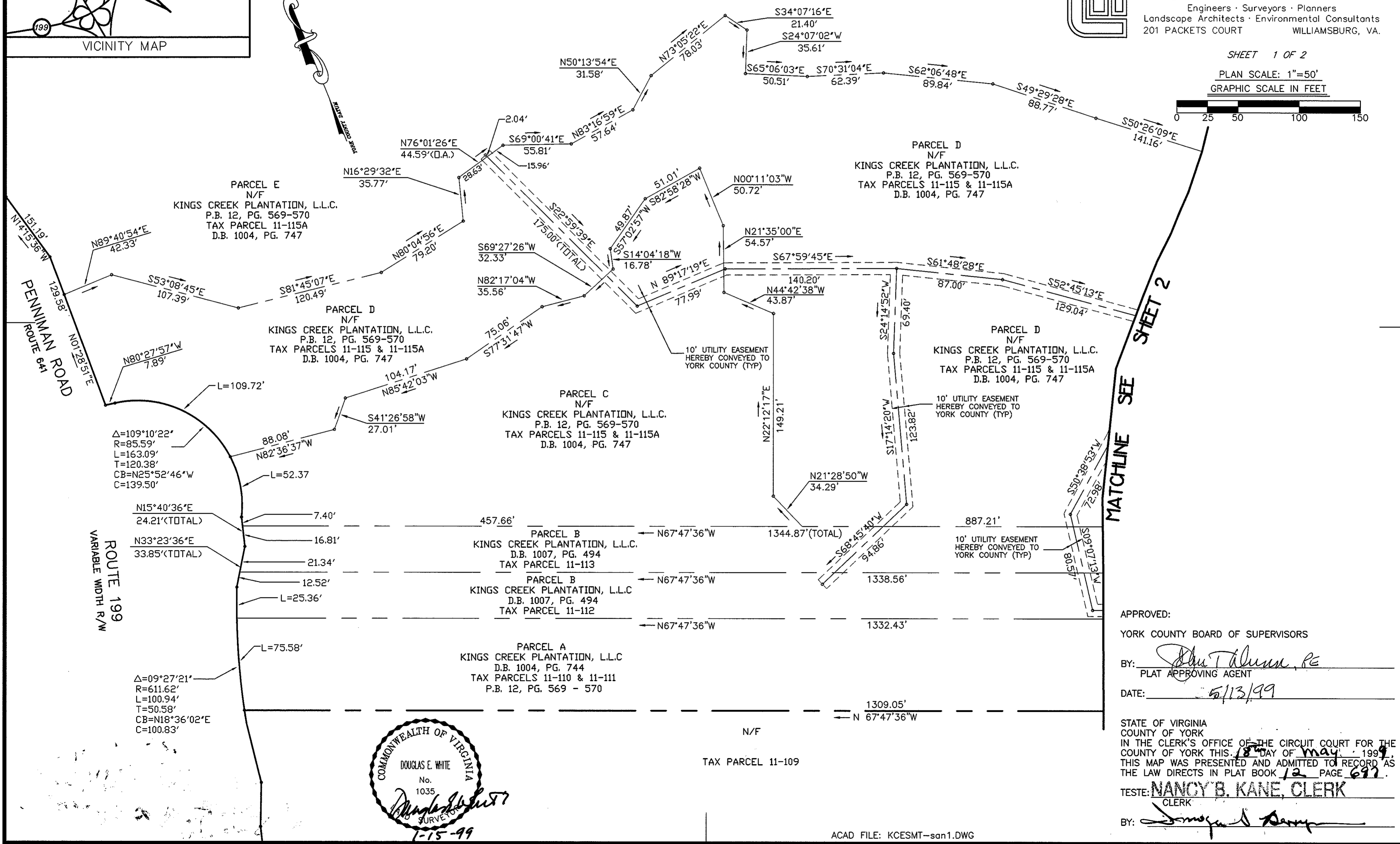
Langley and McDonald, P.C.
 Engineers · Surveyors · Planners
 Landscape Architects · Environmental Consultants
 201 PACKETS COURT WILLIAMSBURG, VA.

NOTES: **PAGE 2**
 1. THE RECORDATION OF THIS PLAT SHALL OPERATE TO TRANSFER TO THE COUNTY OF YORK ANY EASEMENT INDICATED ON THE PLAT FOR DRAINAGE AND/OR SANITARY SEWER TO CREATE A PUBLIC RIGHT-OF-PASSAGE OVER THE SAME, UNLESS OTHERWISE NOTED ON THIS PLAT.
 2. DRAINAGE AND UTILITY EASEMENTS CONVEYED TO THE COUNTY BY RECORDATION OF THIS PLAT SHALL BE EXCLUSIVE TO THE COUNTY, UNLESS OTHERWISE NOTED. CONVEYANCE OF SUCH EASEMENTS TO THE COUNTY ALSO INCLUDE: (i) THE COUNTY'S RIGHT OF INGRESS AND EGRESS OVER THE OWNER'S LAND ADJACENT TO THE EASEMENT AS NECESSARY TO INSPECT, MAINTAIN AND OPERATE THE COUNTY'S FACILITIES WITHIN THE EASEMENT AND (ii) THE RIGHT OF THE COUNTY TO ASSIGN TO OTHERS, FROM TIME TO TIME, THE RIGHT TO LOCATE FACILITIES THEREIN SERVING THE PUBLIC, INCLUDING, BUT NOT LIMITED TO, WATER, ELECTRIC, TELEPHONE, COMMUNICATIONS, AND GAS UTILITY FACILITIES.

LEGEND:
 - - - - - CENTERLINE OF 20' UTILITY EASEMENT HEREBY CONVEYED TO YORK COUNTY
 - - - - - LIMITS OF 20' UTILITY EASEMENT HEREBY CONVEYED TO YORK COUNTY
 - - - - - PIPE/RODS (TYP)



SHEET 1 OF 2
 PLAN SCALE: 1"=50'
 GRAPHIC SCALE IN FEET



COMMONWEALTH OF VIRGINIA
 DOUGLAS E. WHITE
 No. 1035
 SURVEYOR
 1-15-99

APPROVED:
 YORK COUNTY BOARD OF SUPERVISORS
 BY: *[Signature]*
 PLAT APPROVING AGENT
 DATE: 5/13/99

STATE OF VIRGINIA
 COUNTY OF YORK
 IN THE CLERK'S OFFICE OF THE CIRCUIT COURT FOR THE COUNTY OF YORK THIS 18th DAY OF May, 1999,
 THIS MAP WAS PRESENTED AND ADMITTED TO RECORD AS THE LAW DIRECTS IN PLAT BOOK 12 PAGE 697.
 TESTE: **NANCY B. KANE, CLERK**
 BY: *[Signature]*