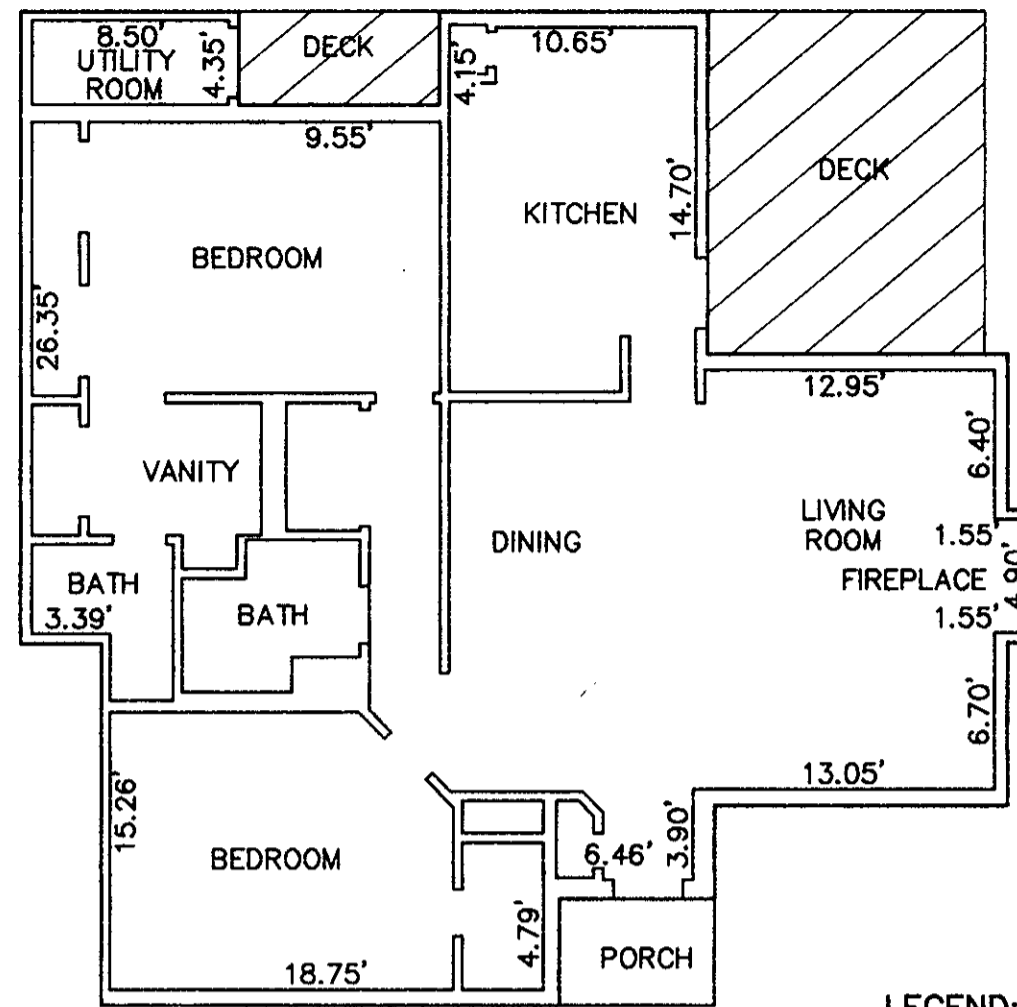
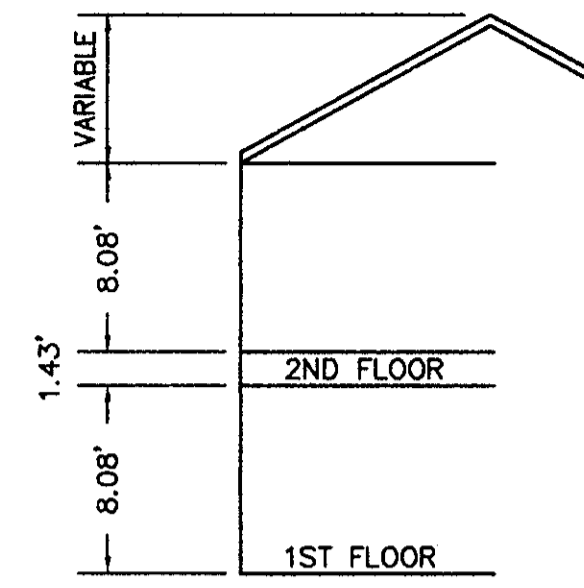


UNIT A
1ST FLOOR
W/ PORCH & DECKS



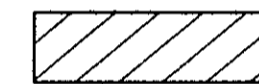
UNIT B
1ST FLOOR
W/ PORCH & DECKS



THE UNDERSIGNED CERTIFIES THAT THIS PLAN IS ACCURATE AND COMPLIES WITH THE PROVISIONS OF THE CODE OF VIRGINIA SECTION 55-79.58 (b) AND ALL UNITS DEPICTED HEREON HAVE BEEN SUBSTANTIALLY COMPLETED.

SIGNED: Craig L. Pittman DATE: 5/4/99
CRAIG L. PITTMAN, P.E.

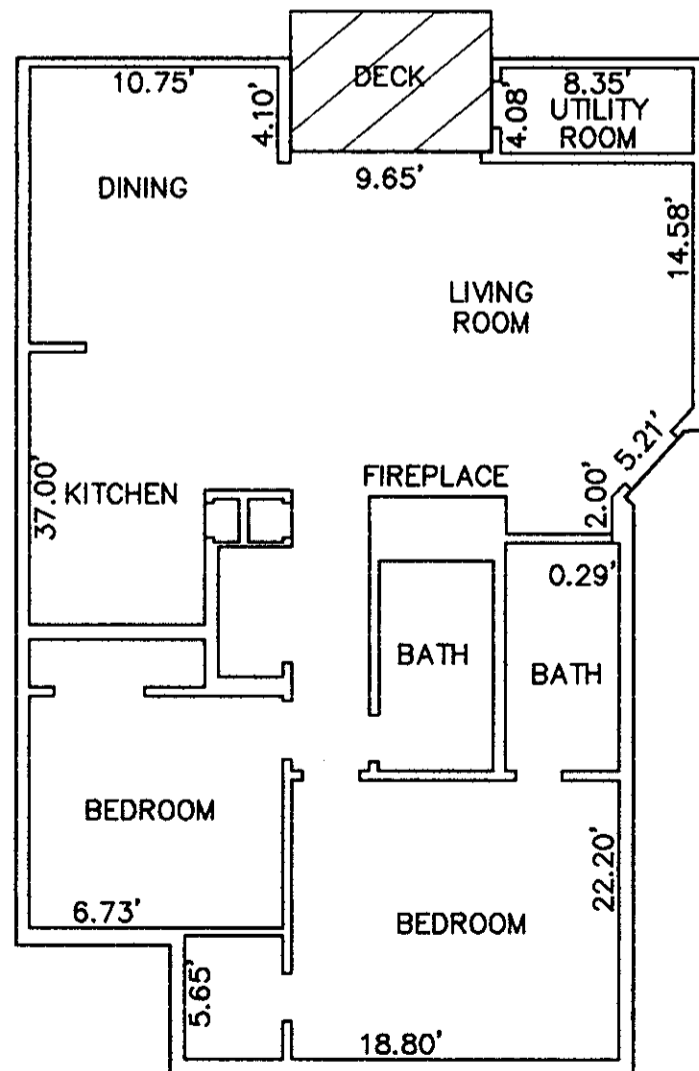
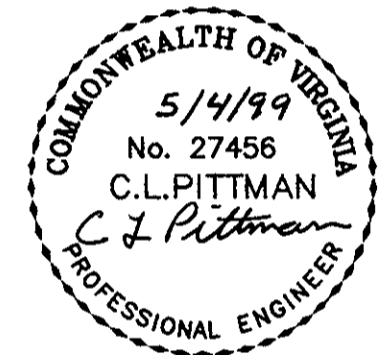
LEGEND:



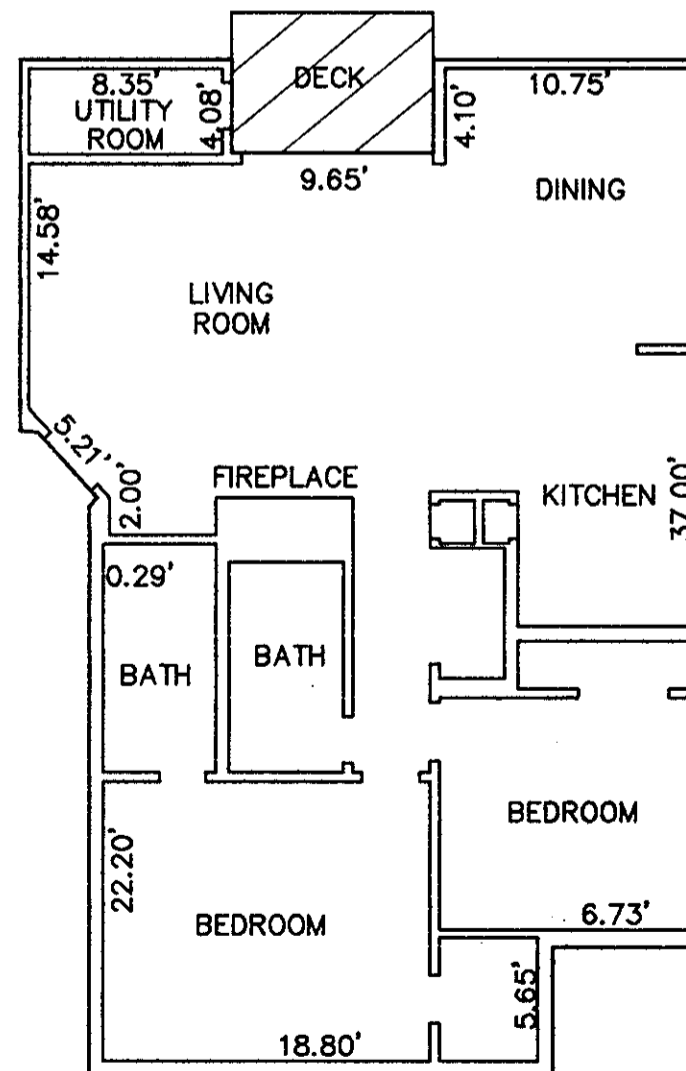
— LIMITED COMMON ELEMENTS

NOTES:

1. ALL BUILDING DIMENSIONS SHOWN HEREON ARE INTERIOR DIMENSIONS AND ARE IN FEET.
2. ALL DIMENSIONED INTERIOR WALLS ARE BOUNDARY LINES FOR THE CONDOMINIUM UNITS.



UNIT C
2ND FLOOR
W/ DECK



UNIT D
2ND FLOOR
W/ DECK

STATE OF VIRGINIA
COUNTY OF YORK

IN THE CLERK'S OFFICE OF THE CIRCUIT COURT FOR THE COUNTY OF YORK THE 1st DAY OF June, 1999, THIS PLAT WAS PRESENTED AND ADMITTED TO RECORD AS THE LAW DIRECTS IN PLAT BOOK 12, PAGE 702.

TESTE: Nancy B. Kane, Clerk
CLERK
BY: Kristen N. Nelson, D.C.

EXHIBIT C-18
PHASE EIGHTEEN
SHEET 2 OF 3
SUPPLEMENTAL PLANS OF
BURNT BRIDGE RUN CONDOMINIUM

GRAFTON DISTRICT - COUNTY OF YORK, VIRGINIA
SCALE: 1/8" = 1'-0" MARCH 17, 1999



GRAPHIC SCALE
THE SIRINE GROUP, LTD.
SURVEYORS • ENGINEERS • PLANNERS
P.O. BOX 450, ROUTE 17
WHITE MARSH, VIRGINIA 23183