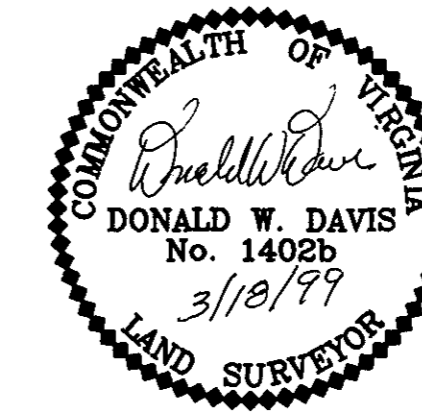


# McDONALD BLUFFS

BETHEL MAGISTERIAL DISTRICT  
COUNTY OF YORK, VIRGINIA  
SCALE: 1" = 100' DATE: 18 MARCH 1999

**DAVIS & ASSOCIATES, P.C.**  
SURVEYORS - PLANNERS  
3630 GEORGE WASHINGTON  
MEMORIAL HIGHWAY - SUITE "G"  
YORKTOWN, VIRGINIA 23693

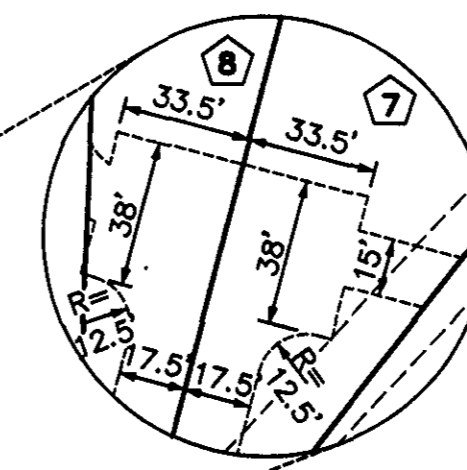


GRAPHIC SCALE

SHEET 2 OF 4

### - SYMBOLS -

- DENOTES MINIMUM BUILDING SETBACK LINE
- DENOTES DRAINAGE EASEMENT HEREBY CONVEYED TO COUNTY OF YORK
- DENOTES UTILITY EASEMENT HEREBY CONVEYED TO COUNTY OF YORK
- DENOTES IRON PIPE FOUND
- DENOTES IRON PIPES TO BE SET AT ALL PROPERTY LINE JUNCTURES
- DENOTES CONCRETE MONUMENT FOUND
- DENOTES CONCRETE MONUMENT TO BE SET
- RPA DENOTES RESOURCE PROTECTION AREA
- RMA DENOTES RESOURCE MANAGEMENT AREA



DETAIL  
SCALE: 1" = 50'

NOW OR FORMERLY  
GEORGE L. SMITH  
(W.B. 61, PG. 829)  
ZONE: RR  
TAX MAP #  
30-182

10' EASEMENT OF  
INGRESS & EGRESS  
CENTERED ON WALKING  
PATH HEREBY CONVEYED  
TO THE McDONALD  
BLUFFS HOMEOWNERS  
ASSOCIATION

35' PRIVATE EASEMENT  
OF INGRESS & EGRESS  
AND DRAINAGE &  
UTILITIES FOR LOTS 6-9  
HEREBY CONVEYED TO THE  
McDONALD BLUFFS  
HOMEOWNERS  
ASSOCIATION - EASEMENT  
CENTERED ON THE  
ROADWAY

NOW OR FORMERLY  
YORK COUNTY  
SCHOOL BOARD  
(D.B. 300, PG. 703)  
ZONE: RC  
TAX MAP #  
30-163

NOW OR FORMERLY  
YORK COUNTY  
SCHOOL BOARD  
(D.B. 300, PG. 703)  
ZONE: RC  
TAX MAP #  
30-161A

**APPROVED**  
YORK COUNTY BOARD OF SUPERVISORS

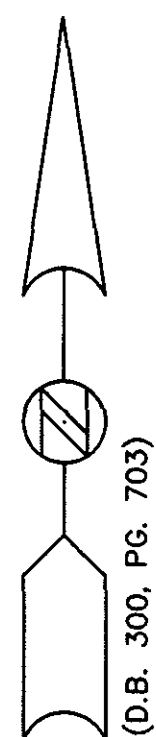
BY: *John A. Quinn, PE*  
PLAT APPROVING AGENT

DATE: 7-16-99

STATE OF VIRGINIA  
COUNTY OF YORK  
IN THE CLERK'S OFFICE OF THE CIRCUIT  
COURT FOR THE COUNTY OF YORK THE  
DAY OF July 1999, THIS MAP WAS  
PRESENTED AND ADMITTED TO RECORD AS  
THE LAW DIRECTS IN PLAT BOOK 13,  
PAGE 18.

TESTED BY: NANCY B. KANE, CLERK  
CLERK

BY: *John A. Quinn, PE*



POQUOSON RIVER

MARSH  
COMMON AREA 1

4' CONTOUR LINE IS  
IS P FOR LOTS 10-12

SHEET 3 OF 4  
MATCH LINE

POQUOSON RIVER

4' CONTOUR LINE  
TRVERSE LINE ONLY

4' CONTOUR LINE IS  
REAR P FOR LOTS 6-9

EXIST. POWER  
POLE  
(TYP.)

TRVERSE  
LINE ONLY

EXISTING  
POND

10' UTILITY EASEMENT  
HEREBY CONVEYED TO  
COUNTY OF YORK

SEE  
DETAILS

20' DRAINAGE EASEMENT  
HEREBY CONVEYED TO  
COUNTY OF YORK

VARIABLE WIDTH UTILITY  
EASEMENT HEREBY  
CONVEYED TO COUNTY  
OF YORK (10' FROM  
SANITARY SEWER)

McDONALD CIRCLE  
(50'R/W)

COMMON AREA 2  
1.7916 ACRES

20' DRAINAGE EASEMENT  
HEREBY CONVEYED TO  
COUNTY OF YORK

NOW OR FORMERLY  
YORK COUNTY  
SCHOOL BOARD  
(D.B. 300, PG. 703)  
ZONE: RC  
TAX MAP #  
30-163

NOW OR FORMERLY  
YORK COUNTY  
SCHOOL BOARD  
(D.B. 300, PG. 703)  
ZONE: RC  
TAX MAP #  
30-161A

COMMON AREA 3  
0.0783 ACRE

KINGS VILLA  
SECTION TWO  
(P.B. 9, PG. 275 & 276)  
ZONE: R20  
TAX MAP #  
30-0-(8)-2-LOT#

SHEET 3  
OF 4  
MATCH LINE

BUFFIE ROAD  
(50'R/W) S.R.#1569

KINGS VILLA  
SECTION TWO  
(P.B. 9, PG. 275 & 276)  
ZONE: R20  
TAX MAP #  
30-0-(8)-2-LOT#