

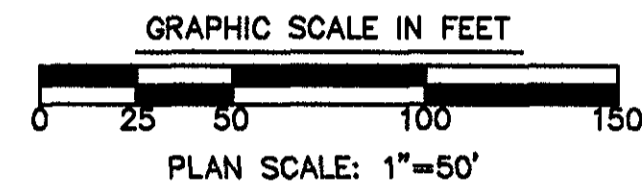
RECORD PLAT
BOUNDARY LINE ADJUSTMENT
 BETWEEN PROPERTIES OF
AMERICAN EASTERN, INC.
 AND
WILLIAM K. HART AND NANNIE R. HART
 NELSON MAGISTERIAL DISTRICT
 YORK COUNTY VIRGINIA

Campbell Land Surveying, Inc.

P.O. BOX 855
 YORKTOWN, VIRGINIA 23692
 (757)890-0837 FAX (757)898-4537

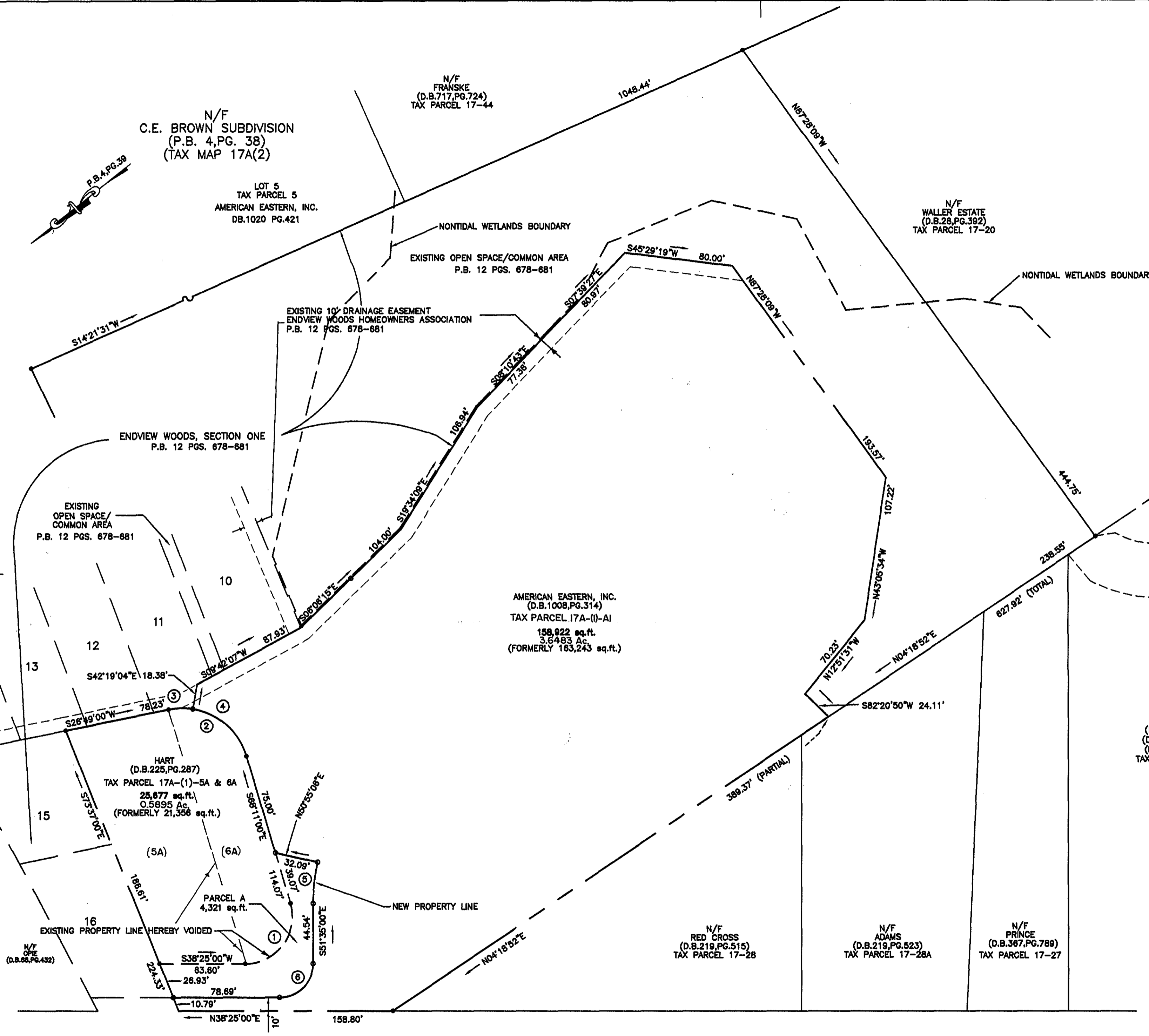
DATE: MAY 24, 1999

SHEET 2 OF 2



LEGEND

- IRON PIPES TO BE SET
- EXISTING IRON PIPE



AMERICAN EASTERN, INC.
 (D.B.1008,PG.314)
 TAX PARCEL 17A-(I)-AI
 158,922 sq.ft.
 3.6483 Ac.
 (FORMERLY 163,243 sq.ft.)

HART
 (D.B.225,PG.287)
 TAX PARCEL 17A-(1)-5A & 6A
 25,677 sq.ft.
 0.5895 Ac.
 (FORMERLY 21,356 sq.ft.)

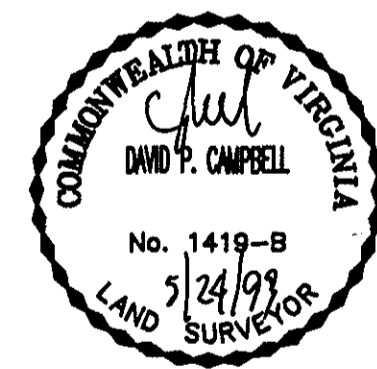
N/F
 OPIE
 (D.B.68,PG.432)

N/F
 RED CROSS
 (D.B.219,PG.515)
 TAX PARCEL 17-28

N/F
 ADAMS
 (D.B.219,PG.523)
 TAX PARCEL 17-28A

N/F
 PRINCE
 (D.B.367,PG.789)
 TAX PARCEL 17-27

N/F
 WASHINGTON
 (D.B.65,PG.176)
 (D.B.184,PG.187)
 (D.B.92,PG.337)
 TAX PARCEL 17-24



APPROVED:
 YORK COUNTY BOARD OF SUPERVISORS

BY: John T. Klumpp, Jr.
 PLAT APPROVING AGENT

DATE: 8-2-99

STATE OF VIRGINIA
 COUNTY OF YORK
 IN THE CLERK'S OFFICE OF THE CIRCUIT COURT FOR THE
 COUNTY OF YORK THE 3rd DAY OF August 1999 THIS
 MAP WAS PRESENTED AND ADMITTED TO RECORD AS THE LAW
 DIRECTS IN PLAT BOOK 13 PAGE 29

TESTE: Nancy B. Kane, Clerk
 CLERK

BY: Kristen N. Nelson, D.C.

OLD WILLIAMSBURG ROAD SR 238 (60± R/W)

TOTAL SUBDIVIDED AREA : 4.2378 Ac.