

N/F
COUNTY OF YORK,
PARCEL A
P.B. 12, PG. 473

PARCEL RELEASE EXHIBIT
58.825 ACRES, PROPERTY OF
COMMONWEALTH COMMUNITIES, L.C.

BETHEL DISTRICT
COUNTY OF YORK, VIRGINIA

DATE: 8/29/99 SHEET 1 OF 3 SCALE: 1"=100'
PROJECT NO: 96-022 DRAWN BY: SJB

SA SLEDD & ASSOCIATES, P.C.
ENGINEERS PLANNERS SURVEYORS
11832 ROCK LANDING DRIVE, SUITE 203
NEWPORT NEWS, VIRGINIA 23606
(757) 873-3386

LINE TABLE

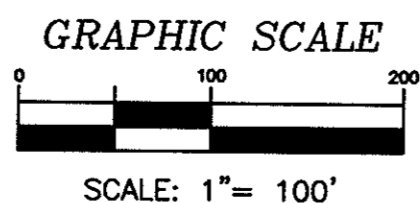
NUMBER	DIRECTION	DISTANCE
L1	N80°41'25"W	69.91
L2	S89°18'13"W	91.30
L3	S78°46'47"W	84.93
L4	S68°04'08"W	84.93
L5	S57°21'29"W	84.93
L6	S46°38'51"W	84.93
L7	S35°56'12"W	84.93
L8	S30°38'14"W	84.95
L9	S40°56'08"W	62.07
L10	S52°14'45"W	36.64
L11	S37°32'55"W	23.44
L12	N68°59'57"E	10.95
L13	S31°17'44"E	50.63
L14	S80°41'25"E	40.72
L15	S05°20'55"W	58.30
L16	S01°04'52"E	80.93
L17	S08°41'07"E	80.87
L18	S16°17'13"E	80.88
L19	S23°53'36"E	92.62
L20	S45°41'06"W	64.64
L21	S42°28'35"W	65.73
L22	S53°17'02"W	67.88
L23	S34°22'48"E	79.03

CURVE TABLE

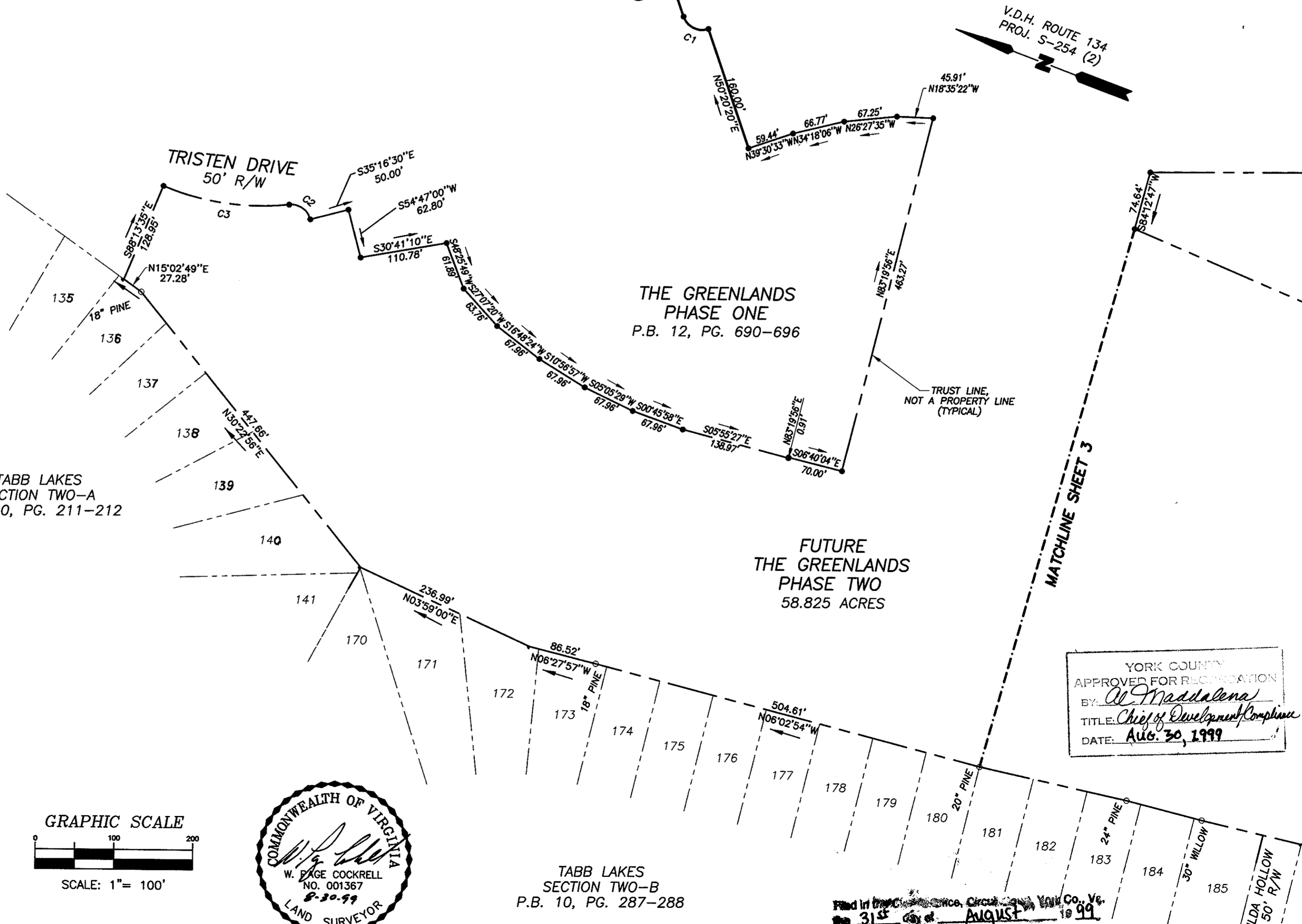
NUMBER	DELTA	RADIUS	LENGTH	TANGENT	CHORD	CH. BEARING
C1	90°00'00"	25.00	39.27	25.00	35.36	N05°20'20"E
C2	81°47'12"	25.00	35.69	21.65	32.73	S13°53'23"W
C3	28°46'38"	325.00	163.23	83.38	161.52	S12°36'54"E
C4	32°58'38"	585.00	336.70	173.16	332.07	N44°09'22"E
C5	71°38'32"	185.00	231.32	133.53	216.55	N63°29'19"E
C6	79°02'10"	43.00	59.32	35.47	54.72	S01°11'05"E
C7	93°59'12"	43.99	72.17	47.17	64.34	S06°17'26"W

LEGEND

- INDICATES POINT FOUND AS DENOTED
- INDICATES V.D.H. CONC. MON. FOUND
- - - - - INDICATES SHEET MATCH LINE



NOTE: THIS IS NOT A SUBDIVISION PLAT.



YORK COUNTY
APPROVED FOR RECONSIDERATION
BY: *Al. Maddalena*
TITLE: *Chief of Development Compliance*
DATE: *AUG. 30, 1999*

Filed in the Office of the Clerk of the Circuit Court, York Co., Va.
on the 31st day of August 1999
Test: *Nancy B. Kono, Clerk*
Kristen N. Nelson C.C.
Plat bk 13 Page 41