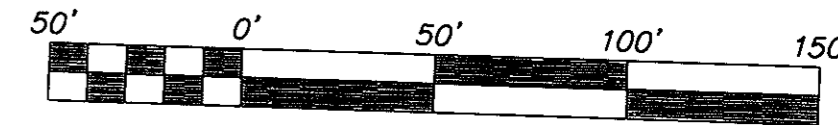


SUBDIVISION  
OF  
**WILLIAMSBURG BLUFFS RECREATION LOT**  
BRUTON MAGISTERIAL DISTRICT, YORK COUNTY VIRGINIA  
SCALE: 1"=50' 5/20/99  
SHEET 2 OF 2



SCALE 1" = 50'

**Rickmond Engineering, Inc.**

1643 Merrimac Trail  
Williamsburg VA 23185  
(757)229-1776  
Fax No. (757) 229-4683

Civil Engineering  
Environmental Engineering  
Land Surveying  
e-mail: rickmond@tni.net

NORTH MERIDIAN IS BASED ON  
DEED BOOK 1040, PAGE 20

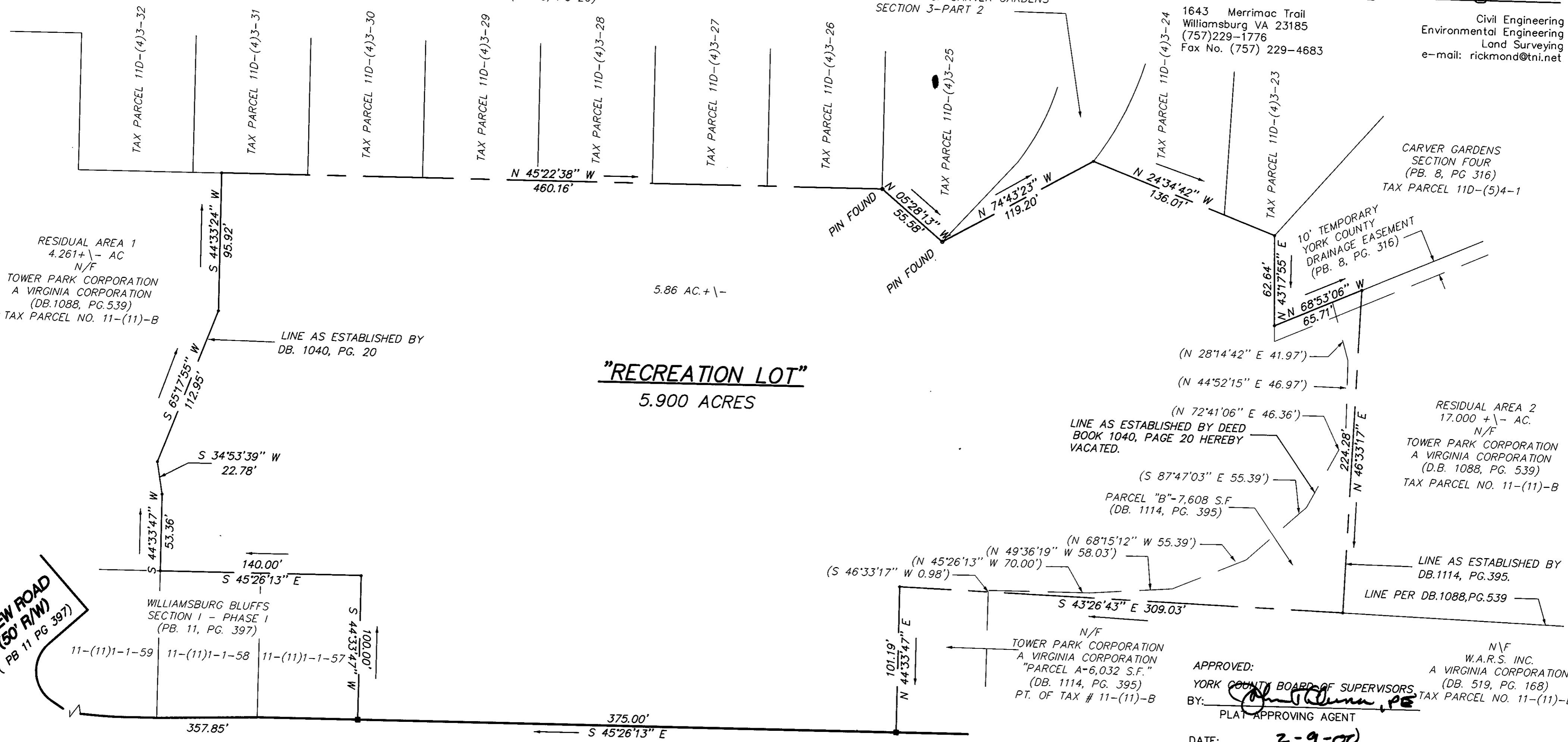
CARVER GARDENS  
SECTION 3 - PART 2  
(PB. 8, PG 26)

AREA LABELED AS "RESERVED  
ON PLAT OF CARVER GARDENS  
SECTION 3-PART 2

CARVER GARDENS  
SECTION FOUR  
(PB. 8, PG 316)  
TAX PARCEL 11D-(5)4-1

RESIDUAL AREA 2  
17.000 +/- AC.  
N/F  
TOWER PARK CORPORATION  
A VIRGINIA CORPORATION  
(D.B. 1088, PG. 539)  
TAX PARCEL NO. 11-(11)-B

N/F  
W.A.R.S. INC.  
A VIRGINIA CORPORATION  
(DB. 519, PG. 168)  
TAX PARCEL NO. 11-(11)-B



**"RECREATION LOT"**  
5.900 ACRES

RESIDUAL AREA 1  
4.261 +/- AC  
N/F  
TOWER PARK CORPORATION  
A VIRGINIA CORPORATION  
(DB. 1088, PG. 539)  
TAX PARCEL NO. 11-(11)-B

LINE AS ESTABLISHED BY  
DB. 1040, PG. 20

LINE AS ESTABLISHED BY DEED  
BOOK 1040, PAGE 20 HEREBY  
VACATED.

PARCEL "B"-7,608 S.F.  
(DB. 1114, PG. 395)

N/F  
TOWER PARK CORPORATION  
A VIRGINIA CORPORATION  
"PARCEL A"-6,032 S.F."  
(DB. 1114, PG. 395)  
PT. OF TAX # 11-(11)-B

LINE AS ESTABLISHED BY  
DB. 1114, PG. 395.  
LINE PER DB. 1088, PG. 539

**DREW ROAD**  
(50' R/W)  
(PB 11 PG 397)

WILLIAMSBURG BLUFFS  
SECTION I - PHASE I  
(PB. 11, PG. 397)

**PARCHMENT**

**BOULEVARD**  
STATE ROUTE 1142  
(PB 11 PG 397-398) (PB 12 PG 333-335)

**(57' R/W)**

**LEGEND**  
IRON PIPE FOUND ○  
IRON PIPE SET ●  
CONCRETE MONUMENT SET ■



APPROVED:  
YORK COUNTY BOARD OF SUPERVISORS  
BY: *[Signature]*  
PLAT APPROVING AGENT

DATE: **2-9-00**

STATE OF VIRGINIA  
COUNTY OF YORK  
IN THE CLERK'S OFFICE OF THE CIRCUIT COURT FOR THE COUNTY  
OF YORK THE 14 DAY OF February, 2000 THIS  
MAP WAS PRESENTED AND ADMITTED TO RECORD AS THE LAW  
DIRECTS IN PLAT BOOK 13, PAGE 88

TESTE: *Lynn S. Jenkins, Clerk*  
CLERK  
BY: *Lupia A. Bess Deputy Clerk*

REVISED 1-24-2000 PER COUNTY COMMENT LETTER DATED 1-21-2000  
REVISED 12-6-1999 PER COUNTY COMMENT LETTER DATED 10-26-1999

SEE SHEET 1 OF 2 FOR NOTES & CERTIFICATIONS.