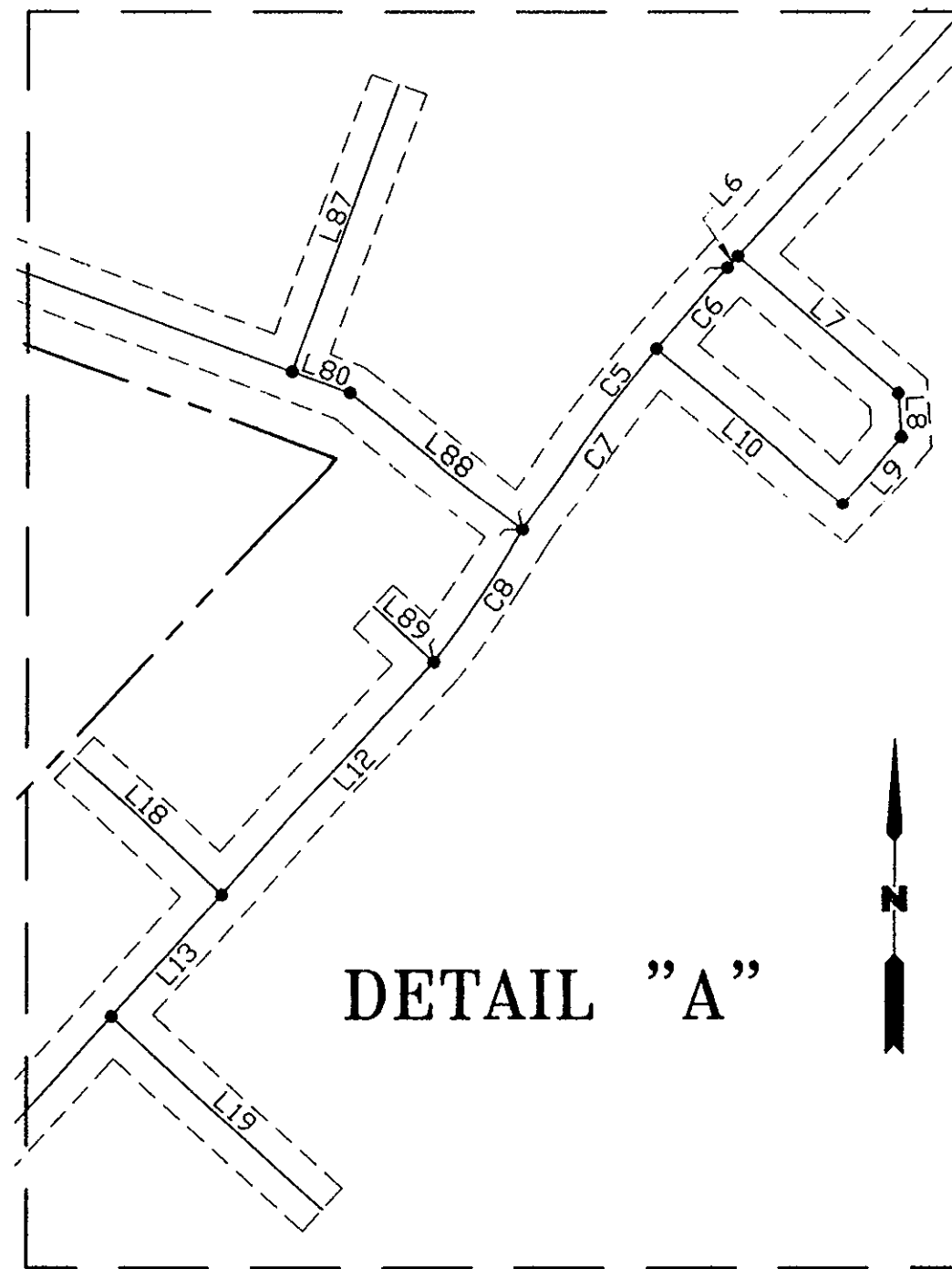


LINE DATA CHART

NUMBER	BEARING	DISTANCE	NUMBER	BEARING	DISTANCE
L1	S 24°26'42" W	13.97'	L46	N 04°05'37" W	122.00'
L2	S 24°26'42" W	49.76'	L47	N 04°05'37" W	122.00'
L3	N 65°33'18" W	14.30'	L48	N 04°05'37" W	50.86'
L4	S 42°20'38" W	61.57'	L49	S 85°54'23" W	48.52'
L5	S 42°20'38" W	144.65'	L50	S 85°54'23" W	49.18'
L6	S 42°20'38" W	2.70'	L51	S 85°54'23" W	49.85'
L7	S 49°22'20" E	36.04'	L52	S 85°54'23" W	49.85'
L8	S 03°49'51" E	7.35'	L53	N 85°54'23" E	14.38'
L9	S 41°42'38" W	15.02'	L54	N 03°59'19" W	71.05'
L10	N 50°27'18" W	41.11'	L55	N 03°59'19" W	122.00'
L11	NOT USED		L56	N 03°59'19" W	122.00'
L12	S 42°20'38" W	53.51'	L57	N 03°59'19" W	122.00'
L13	S 42°20'38" W	27.93'	L58	N 03°59'19" W	130.00'
L14	S 42°20'38" W	122.26'	L59	N 03°59'19" W	15.49'
L15	S 42°20'38" W	86.77'	L60	N 41°41'25" E	11.00'
L16	S 42°20'38" W	42.25'	L61	S 86°00'41" W	49.98'
L17	S 42°20'38" W	6.28'	L62	S 86°00'41" W	50.21'
L18	N 47°39'22" E	34.19'	L63	S 86°00'41" W	50.43'
L19	S 47°39'22" E	48.80'	L64	S 86°00'41" W	50.66'
L20	S 47°39'22" E	48.80'	L65	S 86°00'41" W	50.90'
L21	N 47°39'22" W	13.97'	L66	S 48°18'35" E	14.00'
L22	S 47°39'22" E	48.80'	L67	N 41°41'25" E	11.00'
L23	S 48°04'53" W	14.36'	L68	N 04°05'40" W	19.97'
L24	S 48°04'53" W	144.76'	L69	N 42°13'32" W	91.90'
L25	N 41°55'07" W	14.50'	L70	S 85°54'20" W	5.00'
L26	S 26°29'33" E	47.73'	L71	N 86°20'02" E	139.36'
L27	S 15°30'23" E	47.92'	L72	S 76°16'57" E	134.03'
L28	S 76°43'42" W	100.34'	L73	S 69°44'18" E	3.34'
L29	S 76°43'42" W	106.54'	L74	S 69°44'18" E	85.96'
L30	S 76°43'42" W	16.35'	L75	S 69°44'18" E	12.04'
L31	S 13°16'18" E	47.66'	L76	S 69°44'18" E	98.00'
L32	S 13°16'18" E	47.67'	L77	S 69°44'18" E	117.99'
L33	N 51°11'07" W	30.61'	L78	S 69°44'18" E	115.00'
L34	N 51°45'52" W	16.95'	L79	S 69°44'18" E	137.16'
L35	N 51°45'52" W	9.04'	L80	S 69°44'18" E	10.51'
L36	N 51°45'52" W	5.01'	L81	S 20°15'42" W	12.53'
L37	N 38°14'08" E	13.50'	L82	N 20°15'42" E	54.40'
L38	S 38°14'08" W	37.00'	L83	N 20°15'42" E	54.40'
L39	S 84°11'05" W	24.00'	L84	N 20°15'42" E	53.98'
L40	S 84°11'05" W	44.46'	L85	N 20°15'42" E	53.49'
L41	S 84°11'05" W	85.92'	L86	N 20°15'42" E	53.01'
L42	N 05°48'55" W	23.00'	L87	N 20°15'42" E	52.43'
L43	S 05°48'55" E	55.63'	L88	S 51°42'16" E	37.54'
L44	N 04°05'37" W	69.78'	L89	N 47°39'22" W	14.00'
L45	N 04°05'37" W	120.24'			



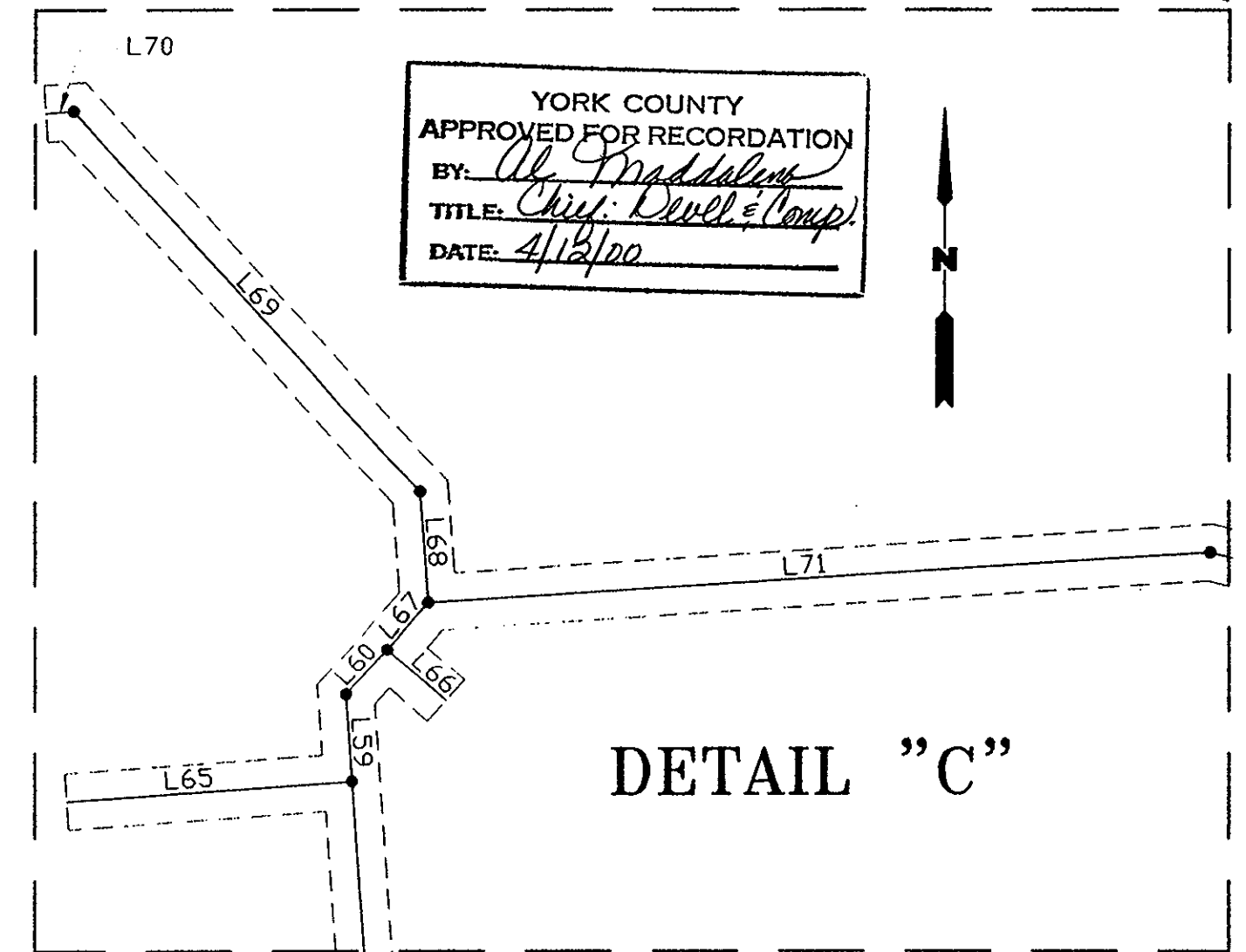
DETAIL "A"

NOTES:

1. THIS PLAT IS INTENDED TO REPRESENT A 10' EXCLUSIVE WATER EASEMENT ONLY. ALL BOUNDARY INFORMATION FROM RECORDS, THEREFORE THIS PLAT IS NOT INTENDED TO REPRESENT A BOUNDARY SURVEY.
2. ALL EASEMENT DIMENSIONS SHOWN HEREON ARE MEASURED FROM THE EASEMENT CENTERLINE.

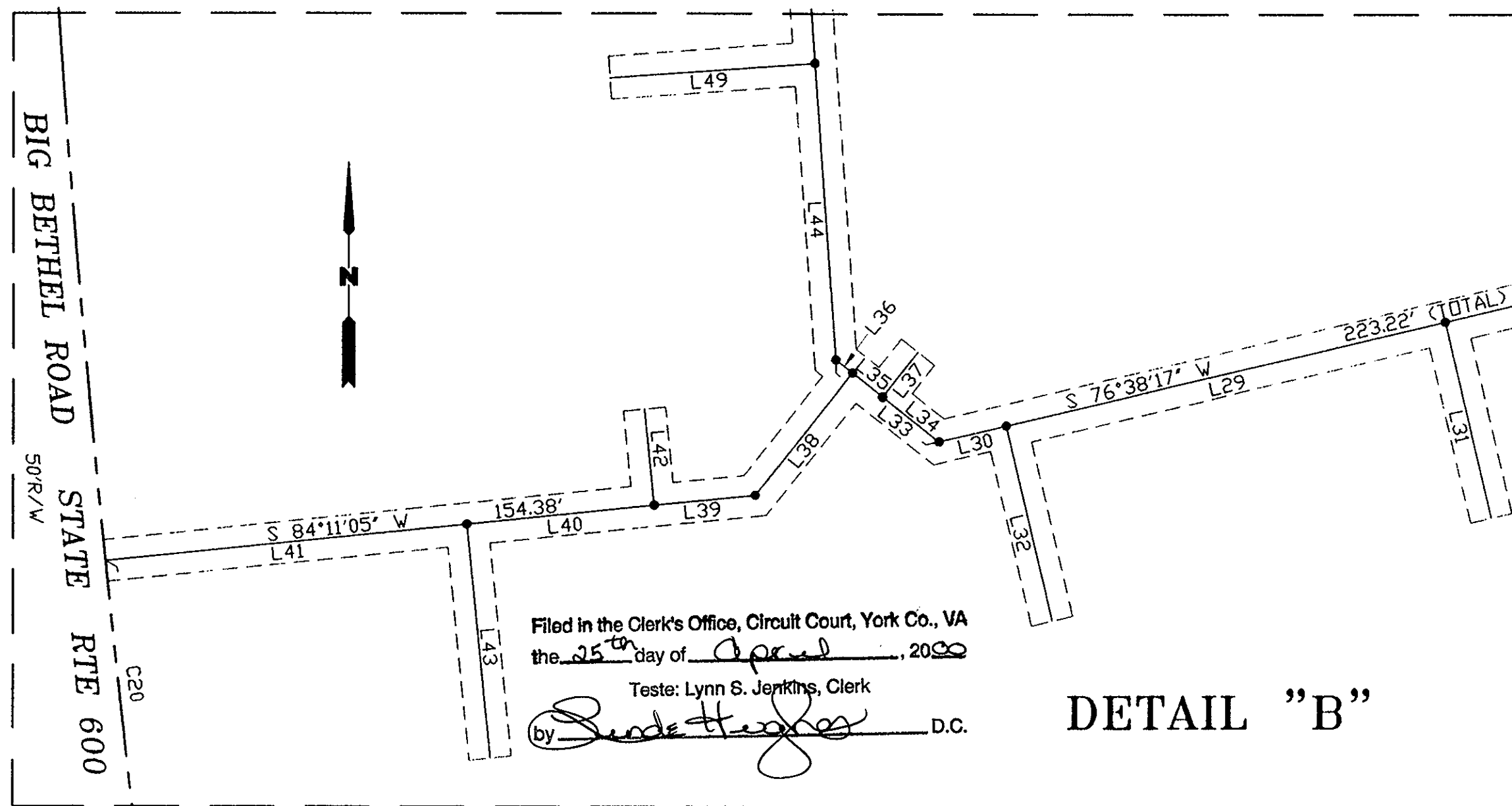
CURVE DATA CHART

NUMBER	RADIUS	DELTA	ARC LENGTH	TANGENT	CHORD	CHORD BEARING
C1	476.50'	17°53'56"	148.86'	75.04'	148.25'	N 33°22'09" E
C2	3809.44'	04°53'26"	325.16'	162.68'	325.06'	N 06°30'03" W
C3	5704.58'	02°10'18"	216.22'	108.12'	216.21'	N 03°00'31" W
C4	485.00'	17°53'56"	151.51'	76.38'	150.90'	S 33°23'40" W
C5	361.50'	08°59'26"	56.72'	28.42'	56.67'	S 37°57'23" W
C6	361.50'	02°54'26"	18.34'	9.17'	18.34'	S 40°59'53" W
C7	361.50'	06°05'00"	38.38'	19.21'	38.36'	S 36°30'11" W
C8	200.00'	07°49'57"	27.34'	13.69'	27.32'	S 33°34'28" W
C9		NOT USED				
C10		NOT USED				
C11	156.50'	36°51'13"	100.66'	52.14'	98.94'	S 23°55'02" W
C12	125.50'	42°35'28"	93.29'	48.92'	91.16'	S 26°47'09" W
C13	504.50'	28°39'04"	252.28'	128.83'	249.66'	S 62°24'25" W
C14	504.50'	15°25'34"	135.83'	68.33'	135.42'	S 55°47'40" W
C15	504.50'	10°59'10"	96.74'	48.52'	96.59'	S 69°00'02" W
C16	504.50'	02°14'20"	19.71'	9.86'	19.71'	S 75°36'47" W
C17	73.50'	64°18'12"	82.49'	46.20'	78.23'	S 44°07'12" E
C18	106.50'	32°58'31"	61.29'	31.52'	60.45'	S 28°27'21" E
C19	115.05'	23°59'33"	48.18'	24.45'	47.82'	S 57°25'12" E
C20	3809.44'	03°00'22"	199.87'	99.96'	199.85'	N 07°26'35" W



DETAIL "C"

YORK COUNTY
 APPROVED FOR RECORDATION
 BY: *Al Maddaloni*
 TITLE: *Chif. Devel. Comp.*
 DATE: *4/12/00*



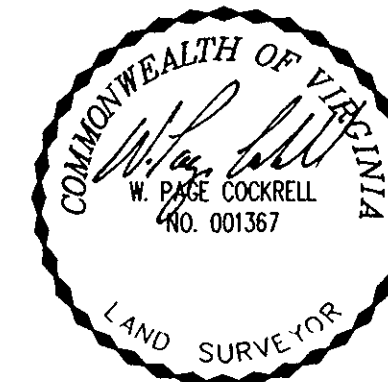
DETAIL "B"

Filed in the Clerk's Office, Circuit Court, York Co., VA
 the 25th day of April, 2000
 Teste: Lynn S. Jenkins, Clerk
 by *Sandra Hughes* D.C.

GRAPHIC SCALE



SCALE: 1" = 30'



PLAT SHOWING
 10' WATERLINE EASEMENT
 TO BE CONVEYED FROM
 852 L.L.C.
 TO
 THE CITY OF NEWPORT NEWS
 VIRGINIA
 FOR
 BELMONT
 LUXURY APARTMENT HOMES
 BETHEL MAGISTERIAL DISTRICT
 COUNTY OF YORK, VIRGINIA

DATE: 02/03/2000 SHEET 2 OF 2 SCALE: 1"=30
 PROJECT NO: 30806.00 DRAWN BY: DWP

VHIB Vanasse Hangen Brustlin, Inc.
 Transportation Land Development Environmental Services
 11832 Rock Landing Drive, Suite 203
 Newport News, Virginia 23606
 (757) 873-3386 • FAX (757) 873-0757