

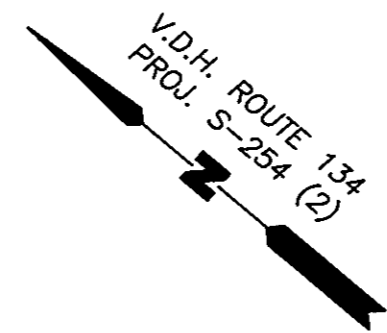
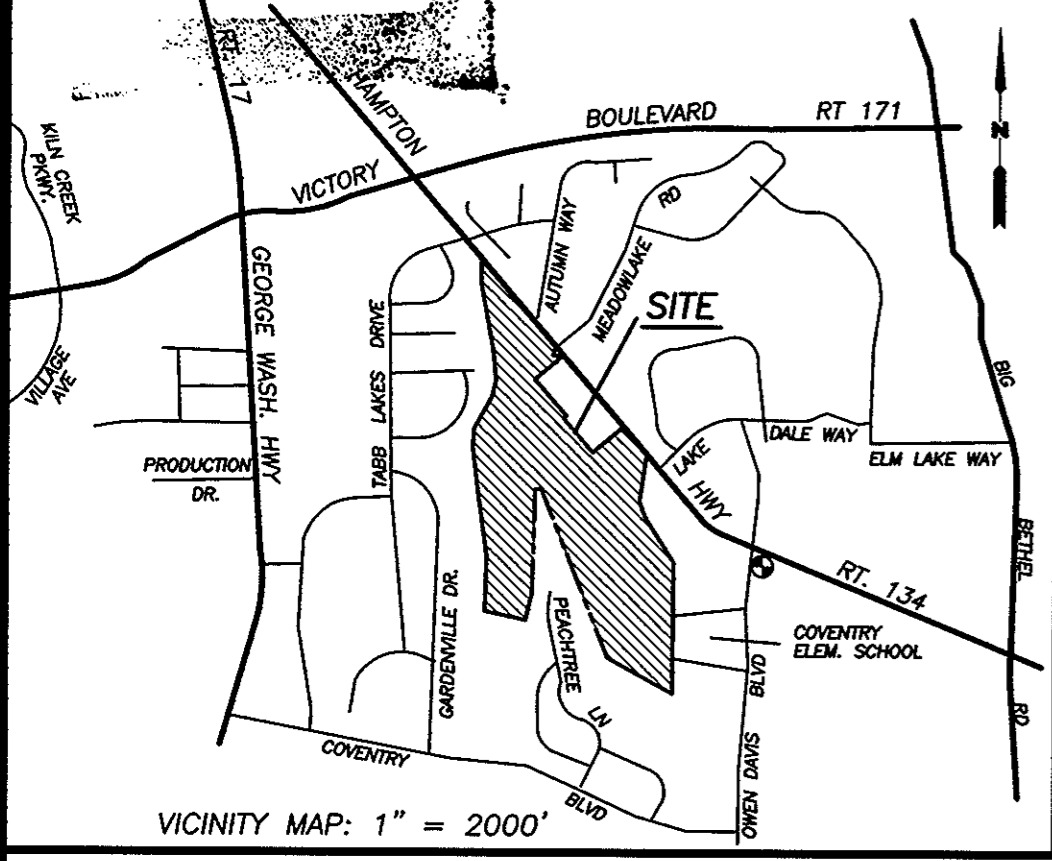
AMENDED
EXHIBIT SHOWING WETLANDS
SUBJECT TO RESTRICTIVE COVENANT
LOCATED ON THE PROPERTY OF
COMMONWEALTH COMMUNITIES, L.C.
TO BE NAMED
THE GREENLANDS SUBDIVISION

COUNTY OF YORK, VIRGINIA

DATE: 9/23/99 SHEET 1 OF 1 SCALE: 1"=300'
PROJECT NO: 96-022 DRAWN BY: S.A.A.

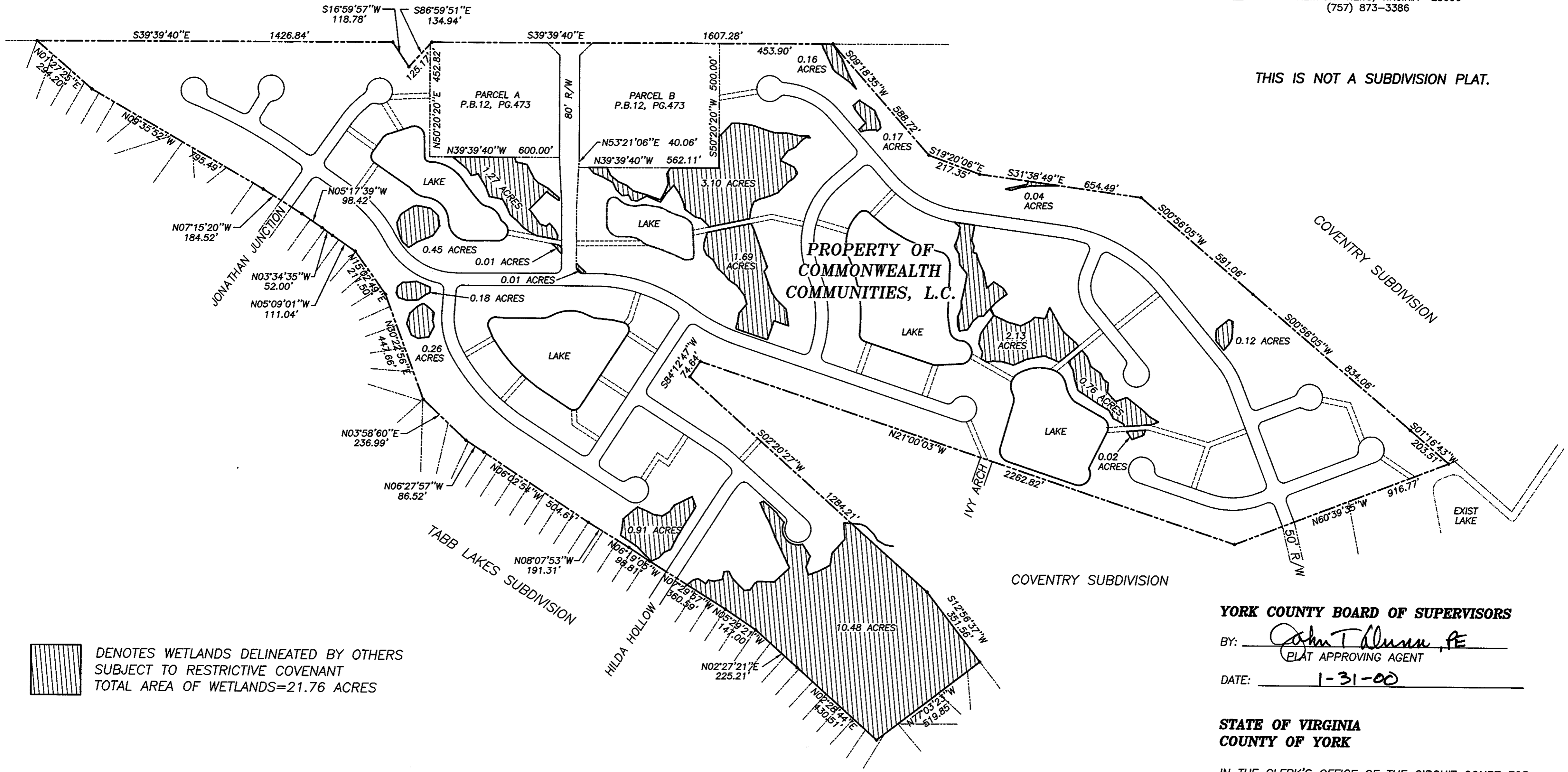


SLEDD & ASSOCIATES, P.C.
ENGINEERS PLANNERS SURVEYORS
11832 ROCK LANDING DRIVE, SUITE 203
NEWPORT NEWS, VIRGINIA 23606
(757) 873-3386

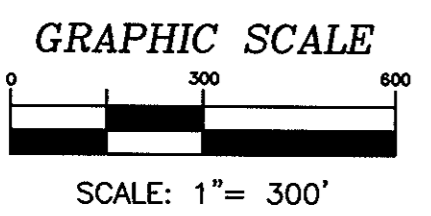


HAMPTON HIGHWAY - STATE ROUTE 134

THIS IS NOT A SUBDIVISION PLAT.



DENOTES WETLANDS DELINEATED BY OTHERS
SUBJECT TO RESTRICTIVE COVENANT
TOTAL AREA OF WETLANDS=21.76 ACRES



YORK COUNTY BOARD OF SUPERVISORS

BY: John T. Allison, PE
PLAT APPROVING AGENT
DATE: 1-31-00

**STATE OF VIRGINIA
COUNTY OF YORK**

IN THE CLERK'S OFFICE OF THE CIRCUIT COURT FOR
THE COUNTY OF YORK, THE 26th DAY OF April, 2000
THIS MAP WAS PRESENTED AND ADMITTED TO RECORD AS
THE LAW DIRECTS IN PLAT BOOK 13, PAGE 125.

TESTE: Lynn S. Jenkins
CLERK

REVISED: 12/27/99
REVISED: 11/11/99
REVISED: 9/23/99

BY: Sande S. Hughes D.C.