

# York Meadows

## SECTION SIX

BETHEL DISTRICT  
COUNTY OF YORK, VIRGINIA

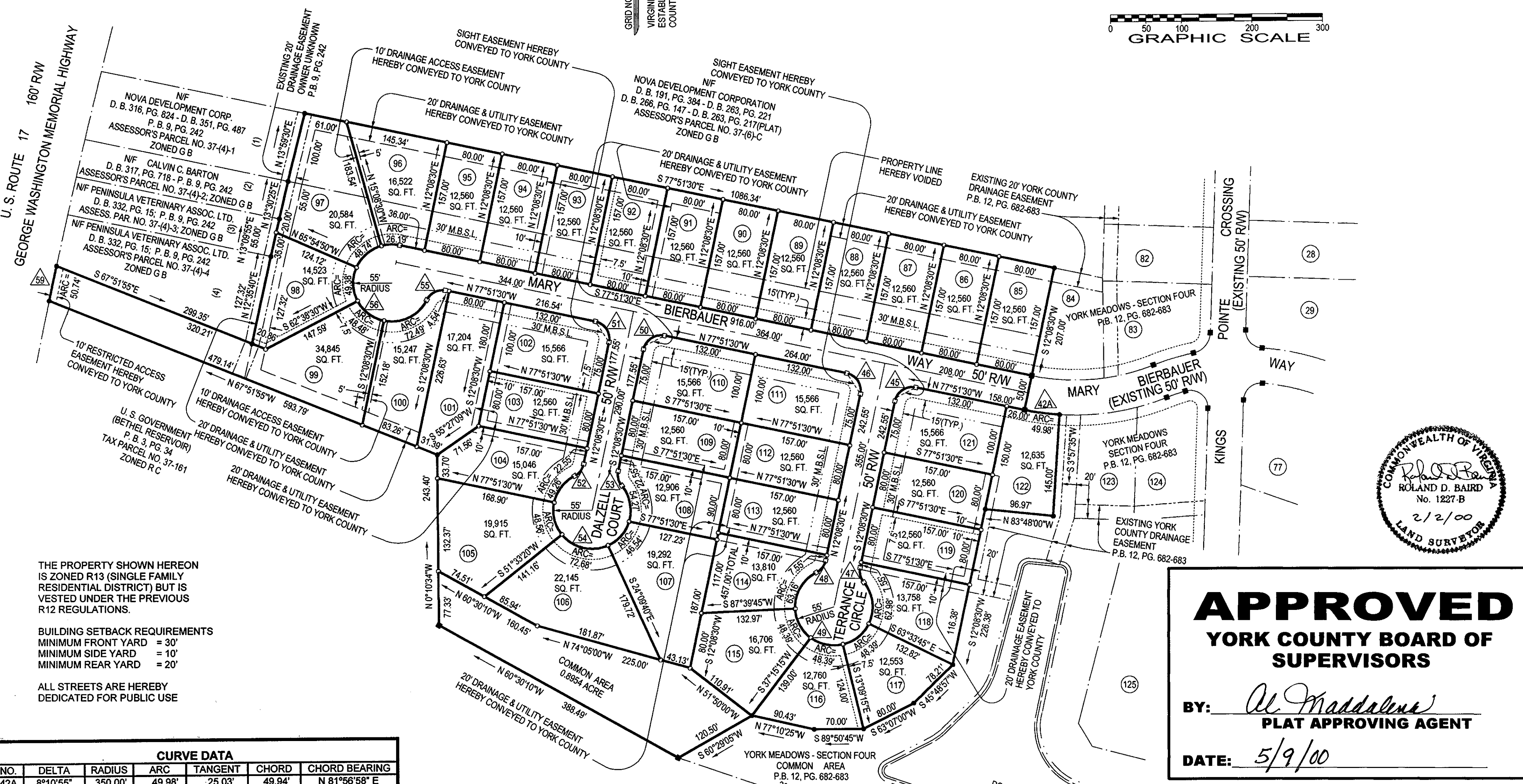
JOHNSON - BAIRD AND ASSOCIATES  
CIVIL ENGINEERING AND LAND SURVEYING

1538 WEST QUEEN STREET - HAMPTON, VIRGINIA - 23669-2645 - PHONE (757) 827-7208 - FAX (757) 827-7503

SCALE: 1" = 100'      DATE: FEBRUARY 2, 2000      SHEET 2  
FILE: 91-042      OF 2



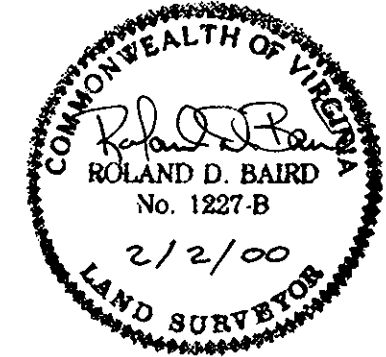
GRID NORTH  
VIRGINIA COORDINATE SYSTEM  
ESTABLISHED FROM YORK  
COUNTY CONTROL



THE PROPERTY SHOWN HEREON IS ZONED R13 (SINGLE FAMILY RESIDENTIAL DISTRICT) BUT IS VESTED UNDER THE PREVIOUS R12 REGULATIONS.

BUILDING SETBACK REQUIREMENTS  
MINIMUM FRONT YARD = 30'  
MINIMUM SIDE YARD = 10'  
MINIMUM REAR YARD = 20'

ALL STREETS ARE HEREBY DEDICATED FOR PUBLIC USE



**APPROVED**  
**YORK COUNTY BOARD OF SUPERVISORS**  
BY: *Al Maddalena*  
**PLAT APPROVING AGENT**  
DATE: *5/9/00*

CURVE DATA						
NO.	DELTA	RADIUS	ARC	TANGENT	CHORD	CHORD BEARING
42A	8°10'55"	350.00'	49.98'	25.03'	49.94'	N 81°56'58" E
45	90°00'00"	25.00'	39.27'	25.00'	35.35'	N 57°08'30" E
46	90°00'00"	25.00'	39.27'	25.00'	35.35'	N 32°51'30" W
47	51°19'04"	25.00'	22.39'	12.01'	21.65'	N 13°31'02" W
48	51°19'04"	25.00'	22.39'	12.01'	21.65'	N 37°48'02" E
49	282°38'08"	55.00'	271.31'	—	—	—
50	90°00'00"	25.00'	39.27'	25.00'	35.35'	N 57°08'30" E
51	90°00'00"	25.00'	39.27'	25.00'	35.35'	N 32°51'30" W
52	51°19'04"	25.00'	22.39'	12.01'	21.65'	N 37°48'02" E
53	51°19'04"	25.00'	22.39'	12.01'	21.65'	N 13°31'02" W
54	282°38'08"	55.00'	271.31'	—	—	—
55	75°31'21"	25.00'	32.95'	19.36'	30.62'	N 64°22'49" E
56	255°31'21"	55.00'	245.28'	—	—	—
59	0°18'25"	9469.28'	50.74'	35.37'	50.74'	N 12°21'50" E

STATE OF VIRGINIA  
COUNTY OF YORK  
IN THE CLERK'S OFFICE OF THE CIRCUIT COURT FOR THE COUNTY OF YORK, ON THIS *15th* DAY OF *May*, 2000, THIS MAP WAS PRESENTED AND ADMITTED TO RECORD AS THE LAW DIRECTS, IN PLAT BOOK *13* PAGE *127*.

TESTE: *Lynn S. Jenkins*  
CLERK  
BY: *Ronald D. Baird*  
DEPUTY CLERK