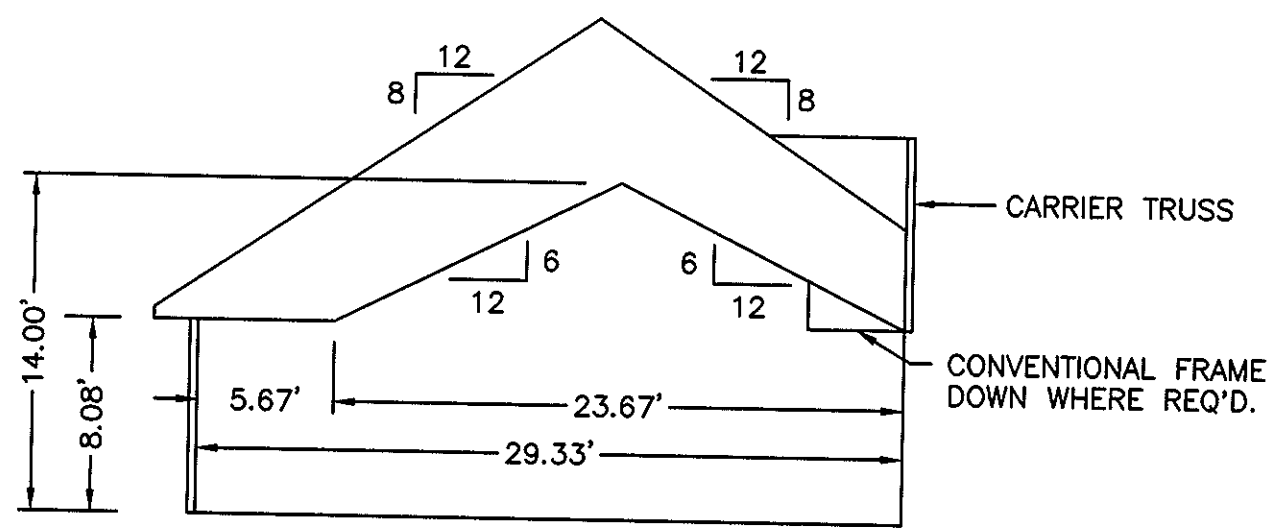
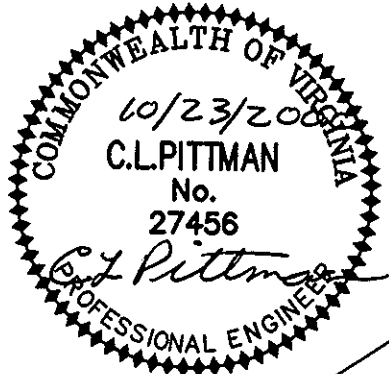
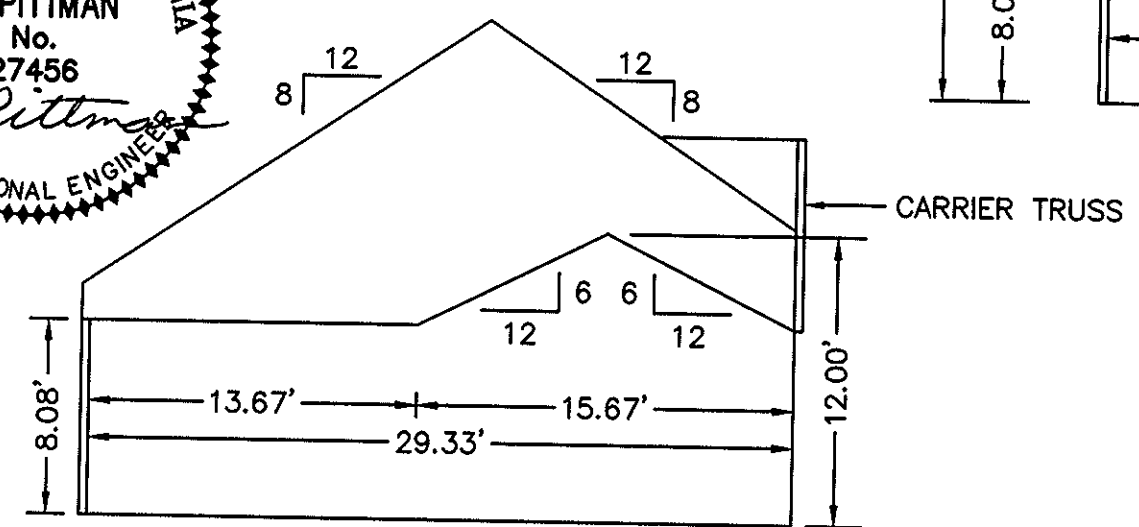


THE UNDERSIGNED CERTIFIES THAT THIS PLAN IS ACCURATE AND COMPLIES WITH THE PROVISIONS OF THE CODE OF VIRGINIA SECTION 55-79.58 (b) AND ALL UNITS DEPICTED HEREON HAVE BEEN SUBSTANTIALLY COMPLETED.

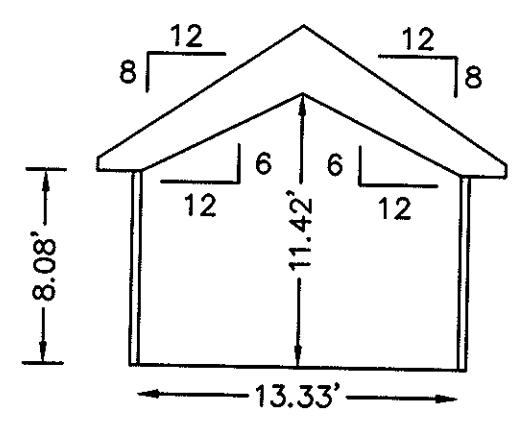
SIGNED: C.L. Pittman DATE: 10/23/2000
C.L. PITTMAN, P.E.



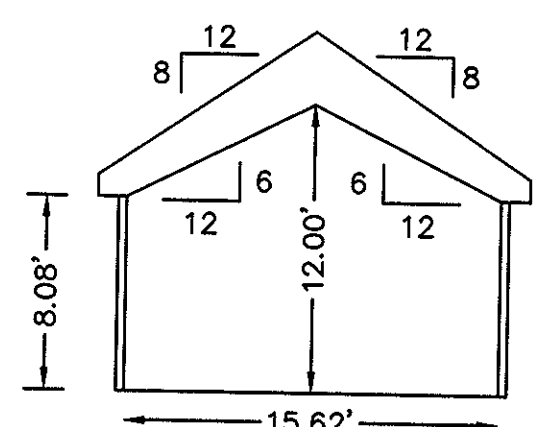
SECTION F-F



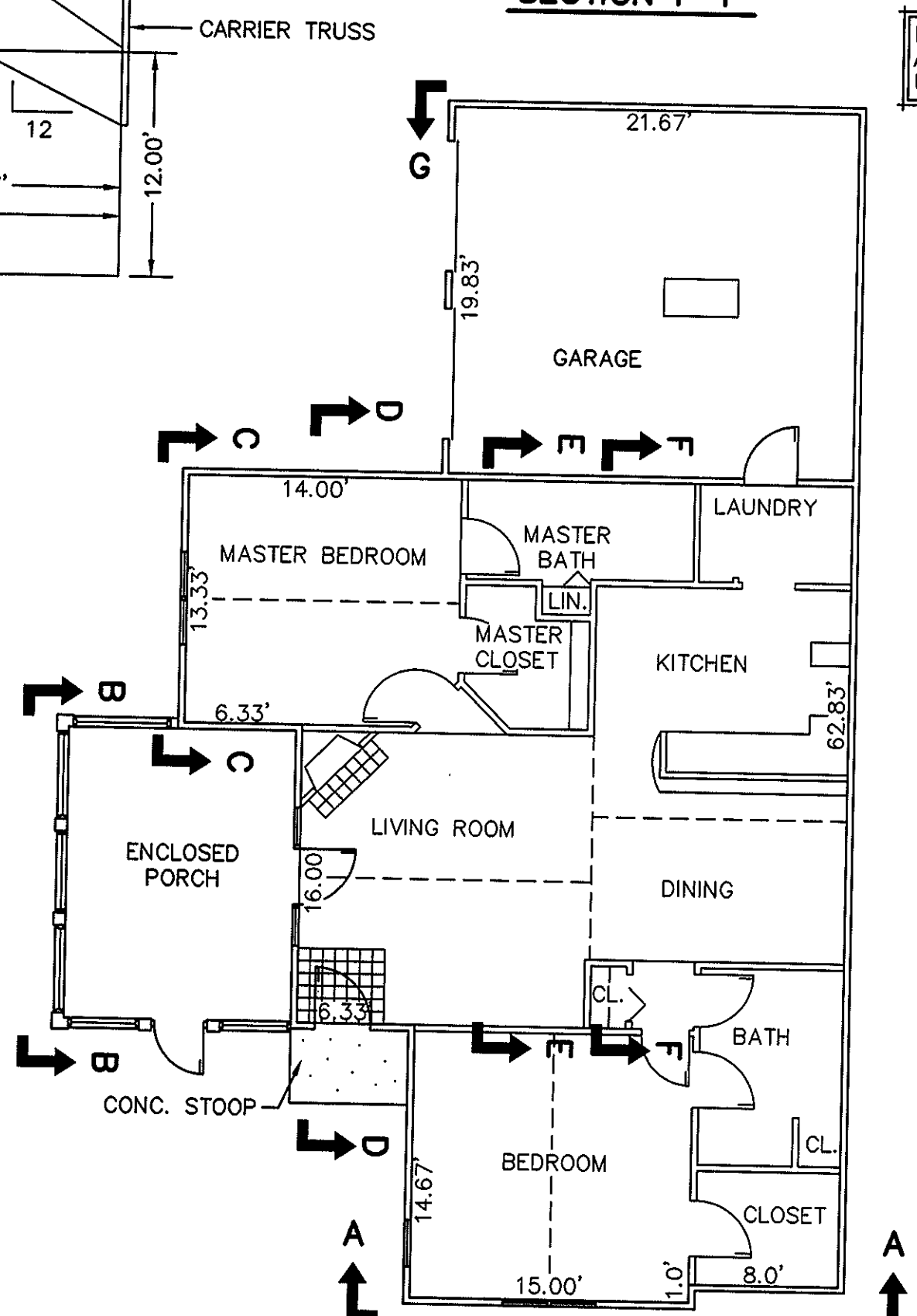
SECTION E-E



SECTION C-C

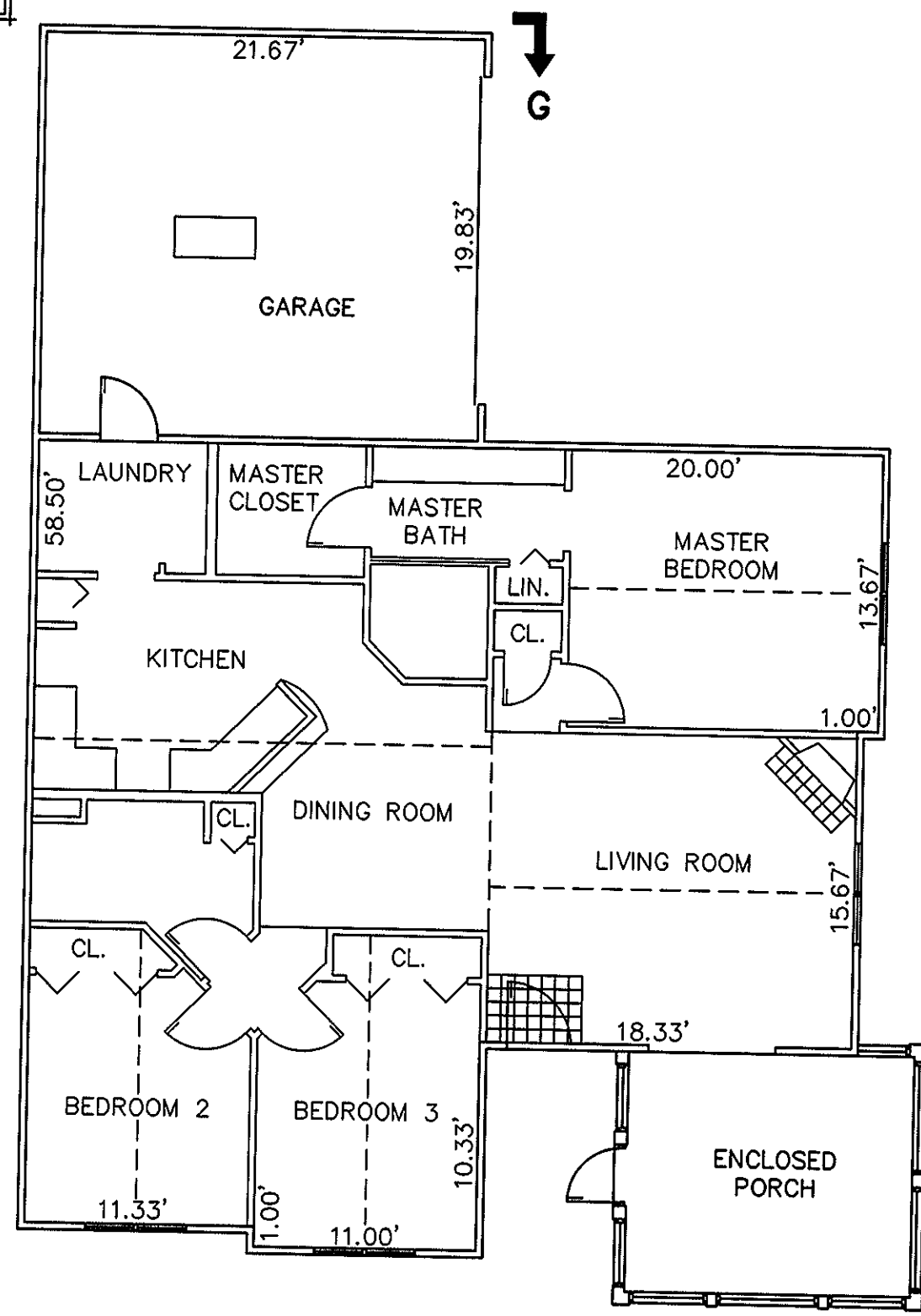
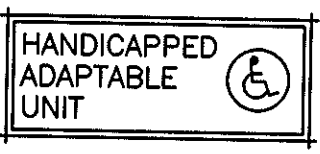


SECTION B-B ENCLOSED PORCH



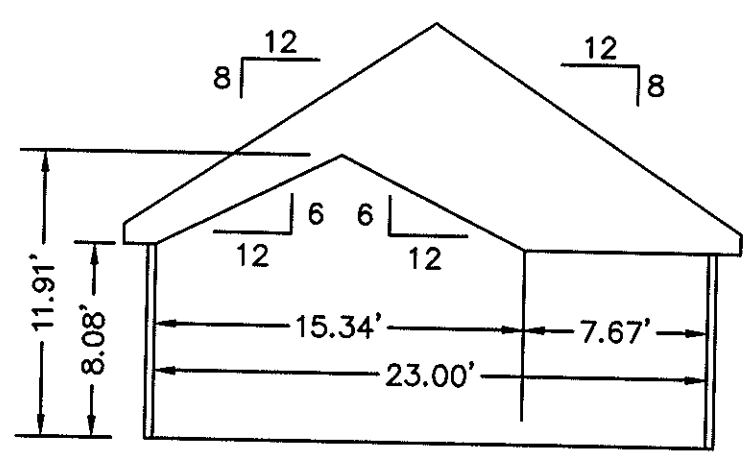
BUILDING 1-1 - ABBEY

FLOOR PLAN W/ ENCLOSED PORCH

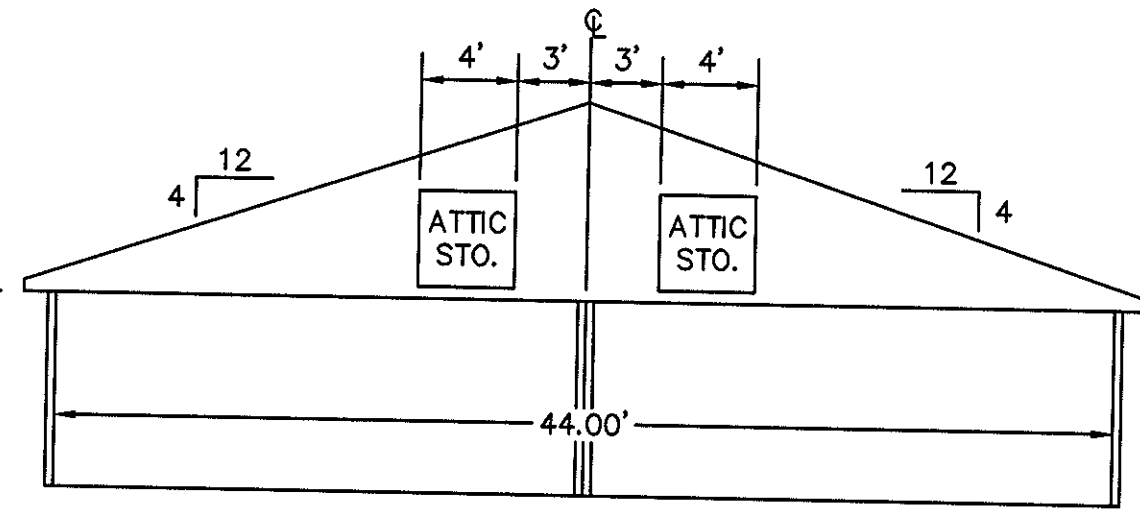


BUILDING 1-4 - CANTERBURY

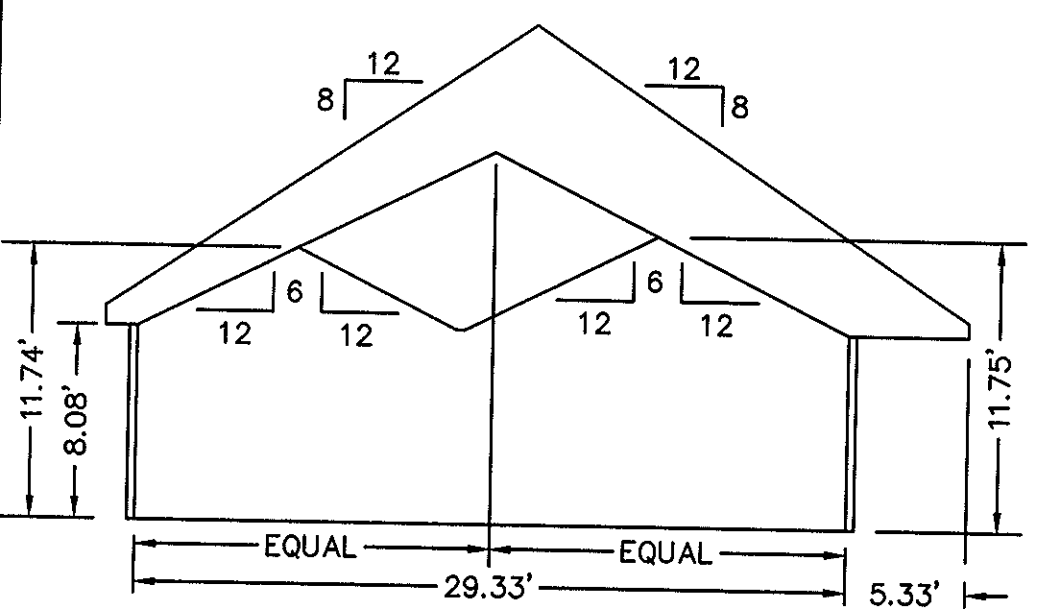
FLOOR PLAN W/ ENCLOSED PORCH



SECTION A-A



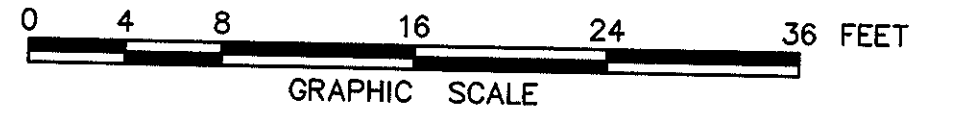
SECTION G-G GARAGE



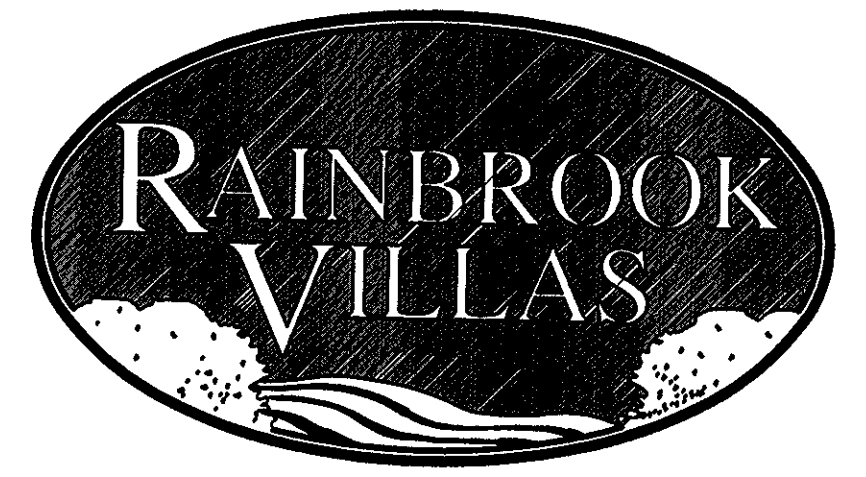
SECTION D-D

EXHIBIT "D"
PLAT OF
RAINBROOK VILLAS
A CONDOMINIUM
PHASE II

SHEET 3 OF 6
GRAFTON DISTRICT - COUNTY OF YORK, VIRGINIA
SCALE: 1/8" = 1'-0" OCTOBER 23, 2000



THE SIRINE GROUP, LTD.
SURVEYORS • ENGINEERS • PLANNERS
4794 GEORGE WASHINGTON MEMORIAL HIGHWAY
U.S. ROUTE 17
P.O. BOX 450
WHITE MARSH, VIRGINIA 23183



APPROVED:
YORK COUNTY BOARD OF SUPERVISORS

BY: A. Maddalena

DATE: 10/30/00

NOTES:
1. ALL BUILDING DIMENSIONS SHOWN HEREON ARE INTERIOR DIMENSIONS AND ARE IN FEET.
STATE OF VIRGINIA
COUNTY OF YORK
IN THE CLERK'S OFFICE OF THE CIRCUIT COURT FOR THE COUNTY OF YORK THE 30 DAY OF OCT, 2000, THIS PLAT WAS PRESENTED AND ADMITTED TO RECORD AS THE LAW DIRECTS IN PLAT BOOK 13, PAGE 196.

TESTE: Lynn S. Jenkins
CLERK

BY: Stacy White D.C.