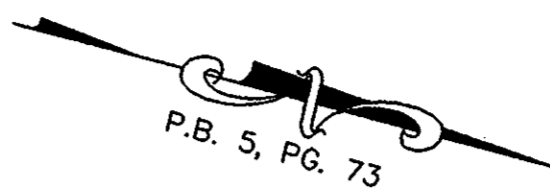


CURVE DATA TABLE						
NUMBER	RADIUS	DELTA	ARC LENGTH	TANGENT	CHORD	CHORD BEARING
C1	3765.72'	2°03'47"	135.59'	67.80'	135.58'	N 13°20'15" W
C2	3765.62'	0°02'30"	2.73'	1.36'	2.73'	N 12°16'25" W
C3	3765.62'	1°12'52"	79.82'	39.91'	79.82'	N 11°38'45" W
C4	50.00'	21°39'00"	18.89'	9.56'	18.78'	N 89°46'25" W
C5	25.00'	90°00'00"	39.27'	25.00'	35.36'	N 31°22'24" E
C6	25.00'	90°00'00"	39.27'	25.00'	35.36'	S 58°37'36" E
C7	20.00'	56°39'38"	19.77'	10.78'	18.98'	N 51°04'37" E
C8	20.00'	71°54'17"	25.10'	14.51'	23.48'	N 86°04'22" E
C9	25.00'	89°15'26"	38.95'	24.68'	35.13'	S 31°00'07" W
C10	50.00'	24°30'40"	21.39'	10.86'	21.23'	S 87°53'11" W
C11	50.00'	18°38'44"	16.27'	8.21'	16.20'	N 66°18'28" E

OVERYORK, LLC
 A VIRGINIA LIMITED LIABILITY COMPANY
 TAX MAP # 37-1
 GPIN S03B-2811-3934
 (INSTRUMENT NO. 990021243, PG. 419)
 NEW AREA OF PARCEL
 12.69± ACRES



BOUNDARY LINE ADJUSTMENT
 PROPERTY OF
C. REEVES POWELL, III,
LH OF VA, LC
 AND
OVERYORK, LLC
 BETHEL MAGISTERIAL DISTRICT
 COUNTY OF YORK, VIRGINIA

DATE: 11/15/00 SHEET 2 OF 2 SCALE: 1"=50'
 PROJECT NO: 31049.00 DRAWN BY: DWP

VHB Vanasse Hangen Brustlin, Inc.
 Transportation Land Development Environmental Services
 11832 Rock Landing Drive, Suite 203
 Newport News, Virginia 23606
 (757) 873-3386 • FAX (757) 873-0157



OVERYORK, LLC
 A VIRGINIA LIMITED LIABILITY COMPANY
 TAX MAP # 37-1
 GPIN S03B-2811-3934
 (INSTRUMENT NO. 990021243)
 NEW AREA OF PARCEL
 12.69± ACRES

20' YORK COUNTY
 UTILITY EASEMENT
 (INSTRUMENT NO.
 000020925, PG. 328)

20' DRAINAGE
 EASEMENT HEREBY
 CONVEYED TO THE
 COUNTY OF YORK

JOSEPH W. MILLER,
 ETUX
 RICH ACRES
 LOT 19
 TAX MAP # 36A(1)-19
 GPIN S03B-2748-4524
 (D.B. 789, PG. 802)
 ZONED R20

MARY A. CLARK
 RICH ACRES
 PT LOT 18
 TAX MAP # 36A(1)-18
 GPIN S03B-2856-4554
 (D.B. 292, PG. 281)
 ZONED R20

SHEILA A. COKLEY
 RICH ACRES
 PT LOT 18 & PT LOT 17
 TAX MAP # 36A(1)-17A & 18A
 GPIN S03B-2953-4580
 GPIN S03B-2916-4571
 (D.B. 584, PG. 86)
 ZONED R20

PAUL S. NEMERGUT, ETUX
 RICH ACRES
 LOT 17
 TAX MAP # 36A(1)-17
 GPIN S03B-3013-4597
 (D.B. 480, PG. 369)
 ZONED R20

C M VENTURES, LLC
 RESUB LOT 15 & 16
 LOT 1
 RICH ACRES
 TAX MAP # 36A(7)-01
 GPIN S03B-3168-4599
 (D.B. 1010, PG. 818)
 ZONED GB

LINE TABLE		
LINE	BEARING	LENGTH
L1	S14°22'10"E	22.75'
L2	N20°04'48"W	29.27'
L3	N20°04'48"W	47.37'
L4	N20°04'48"W	23.86'
L5	S76°22'24"W	52.55'
L6	S14°22'10"E	75.00'
L7	S14°22'10"E	75.00'
L8	N39°01'56"E	46.54'
L9	N78°38'40"E	58.64'
L10	S75°37'50"W	14.97'

LEGEND

- Property Line
- - - - Adjoiner
- - - - Drainage Easement
- - - - Utility Easement
- - - - Access Easement
- - - - Setback Line
- Monument Set
- Iron Pin Set

APPROVED:
YORK COUNTY BOARD OF SUPERVISORS

BY: Al Maddalena
 PLAT APPROVING AGENT

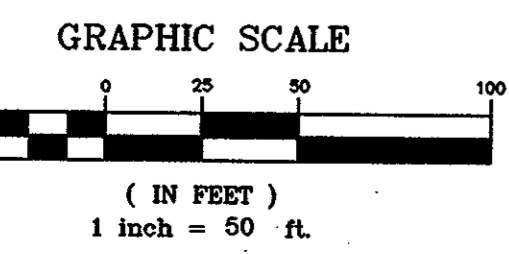
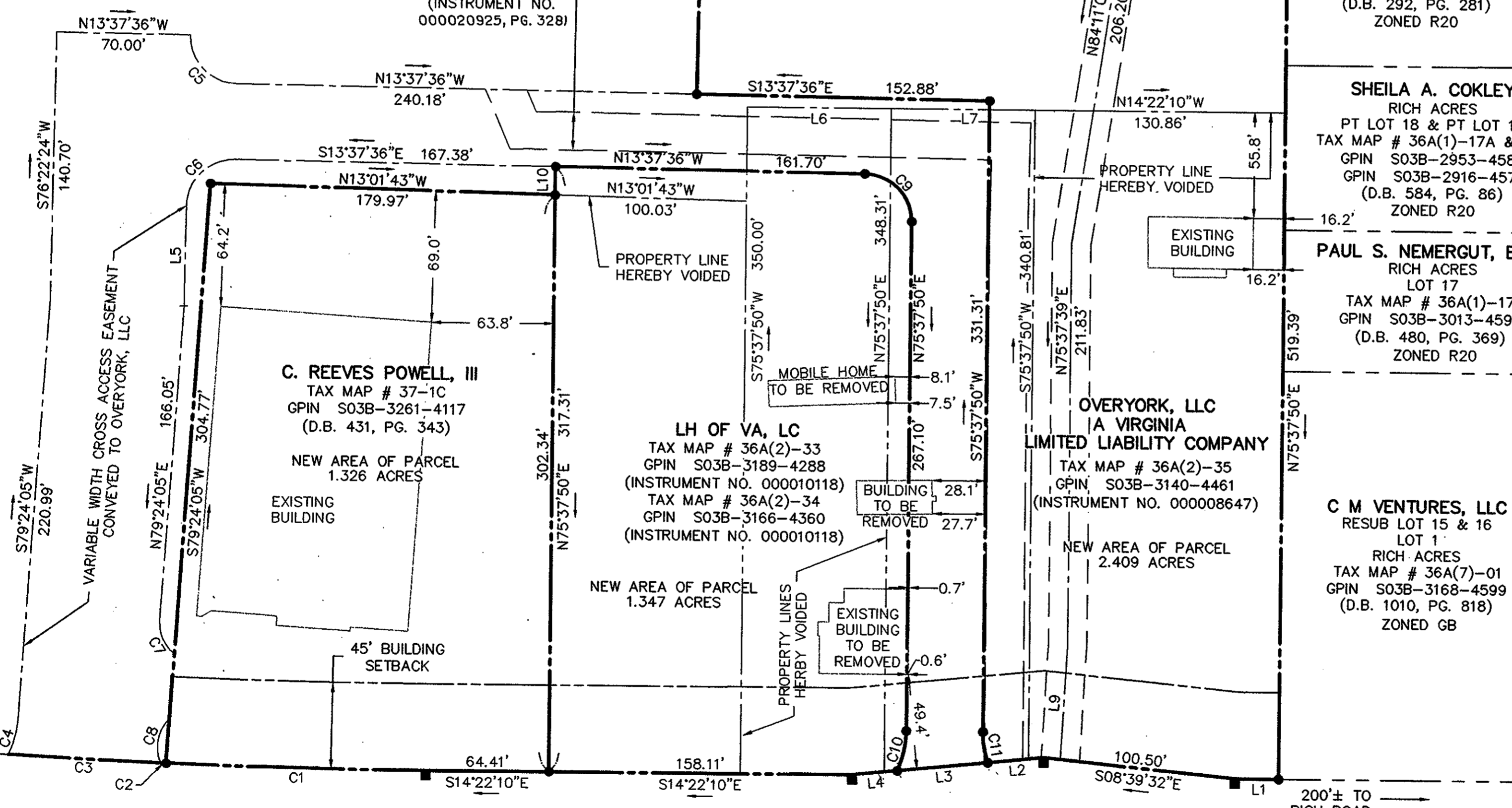
DATE: 12-11-00

STATE OF VIRGINIA
COUNTY OF YORK

IN THE CLERK'S OFFICE OF THE CIRCUIT COURT FOR
 THE COUNTY OF YORK, THE 11 DAY OF Dec, 2000.
 THIS MAP WAS PRESENTED AND ADMITTED TO RECORD AS
 THE LAW DIRECTS IN PLAT BOOK 13, PAGE 221.

TESTE: Lynn S. Jenkins
 CLERK

BY: Stacy White



GEORGE WASHINGTON MEMORIAL HIGHWAY
 U. S. ROUTE 17
 (160' R/W)

200'± TO
 RICH ROAD
 ROUTE 680