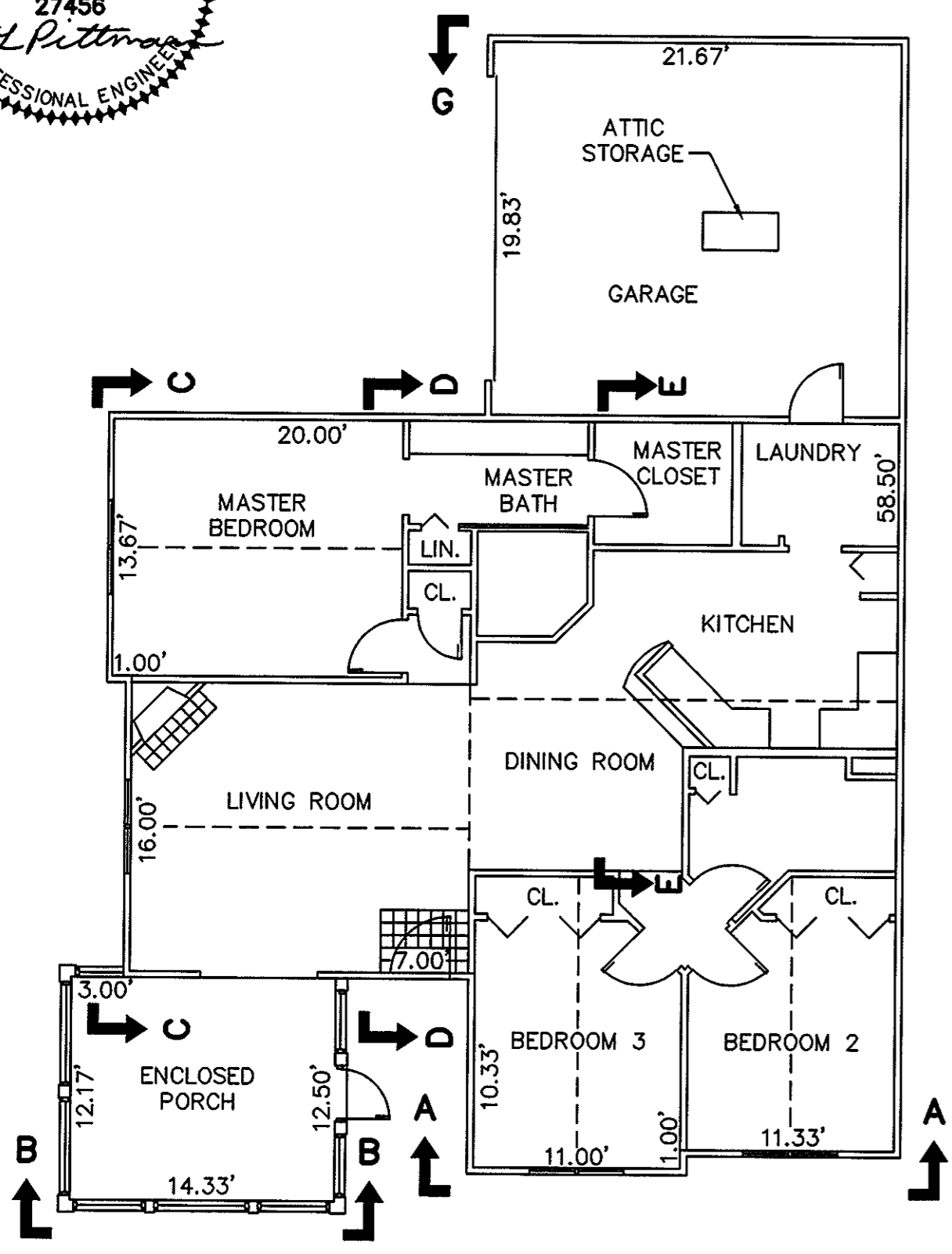


THE UNDERSIGNED CERTIFIES THAT THIS PLAN IS ACCURATE AND COMPLIES WITH THE PROVISIONS OF THE CODE OF VIRGINIA SECTION 55-79.58 (b) AND ALL UNITS DEPICTED HEREON HAVE BEEN SUBSTANTIALLY COMPLETED.

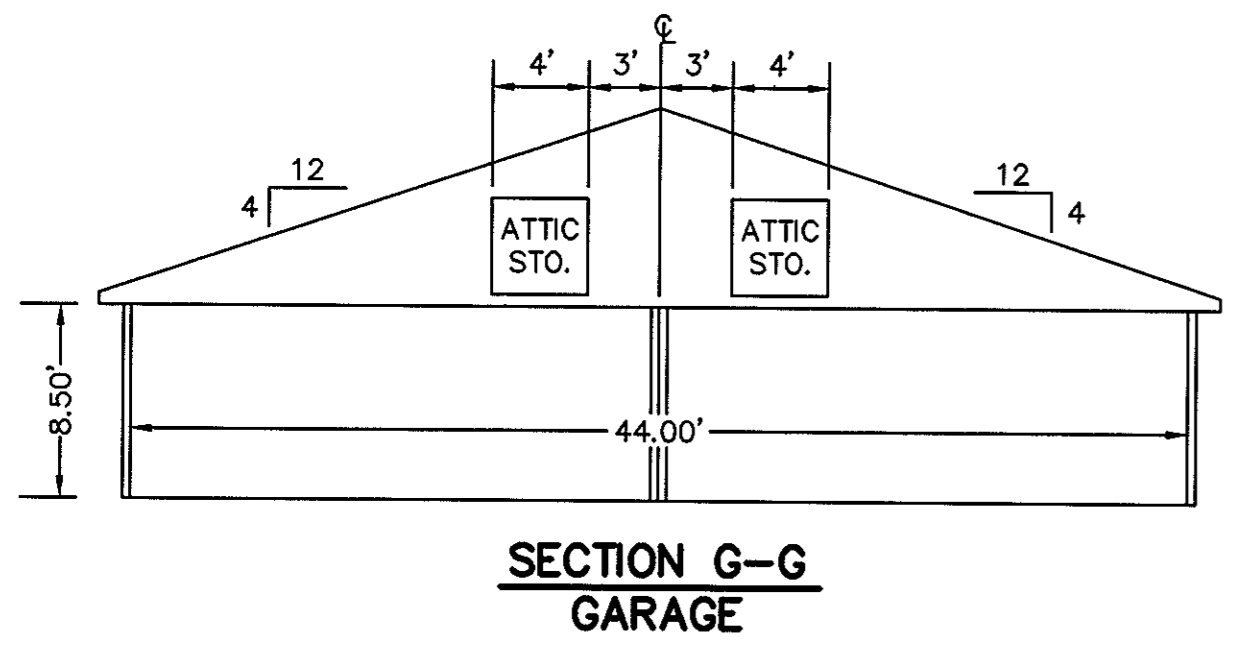
SIGNED: C.L. Pittman DATE: 2/23/2001
C.L. PITTMAN, P.E.



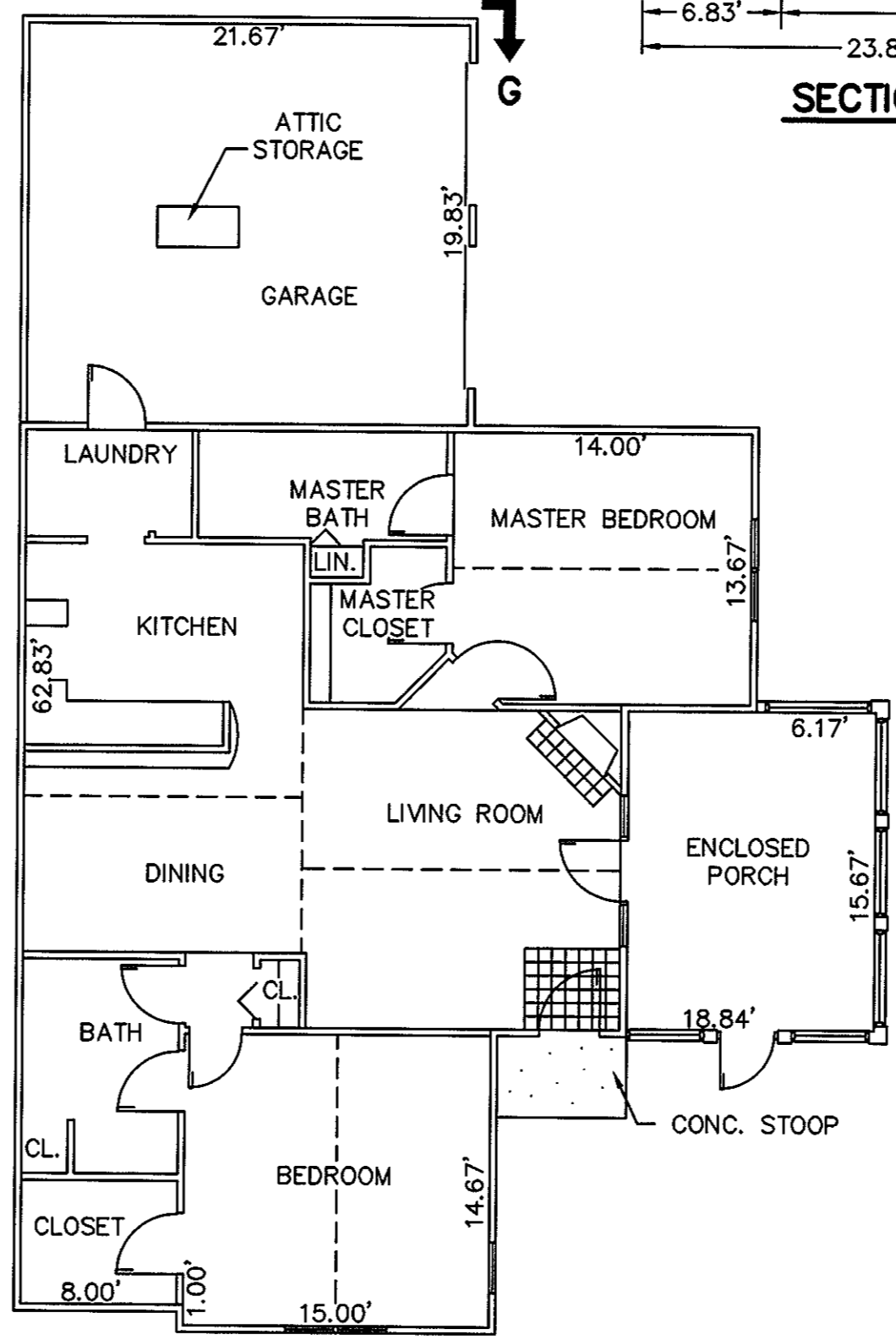
HANDICAPPED ADAPTABLE UNIT



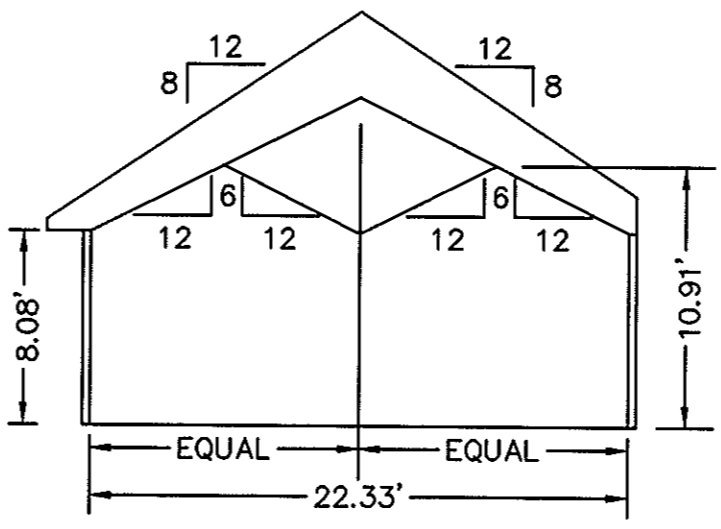
BUILDING 18-1 & 18-3 - CANTERBURY
FLOOR PLAN
W/ ENCLOSED PORCH



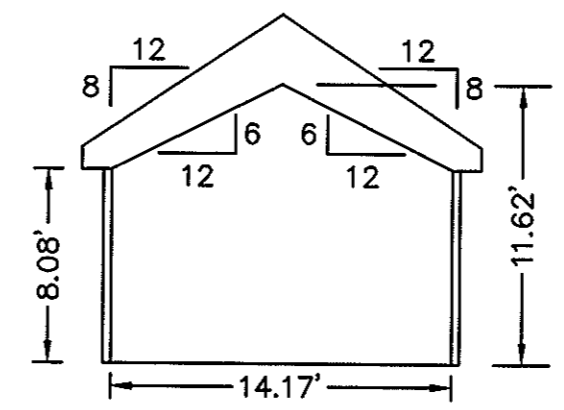
SECTION G-G
GARAGE



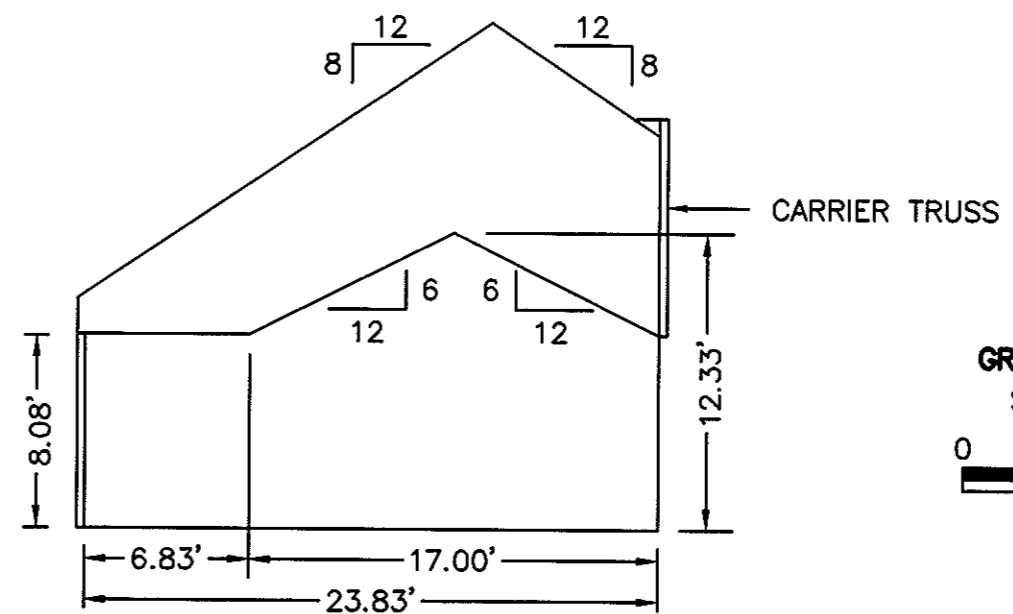
BUILDING 18-2 & 18-4 - ABBEY
FLOOR PLAN
W/ ENCLOSED PORCH



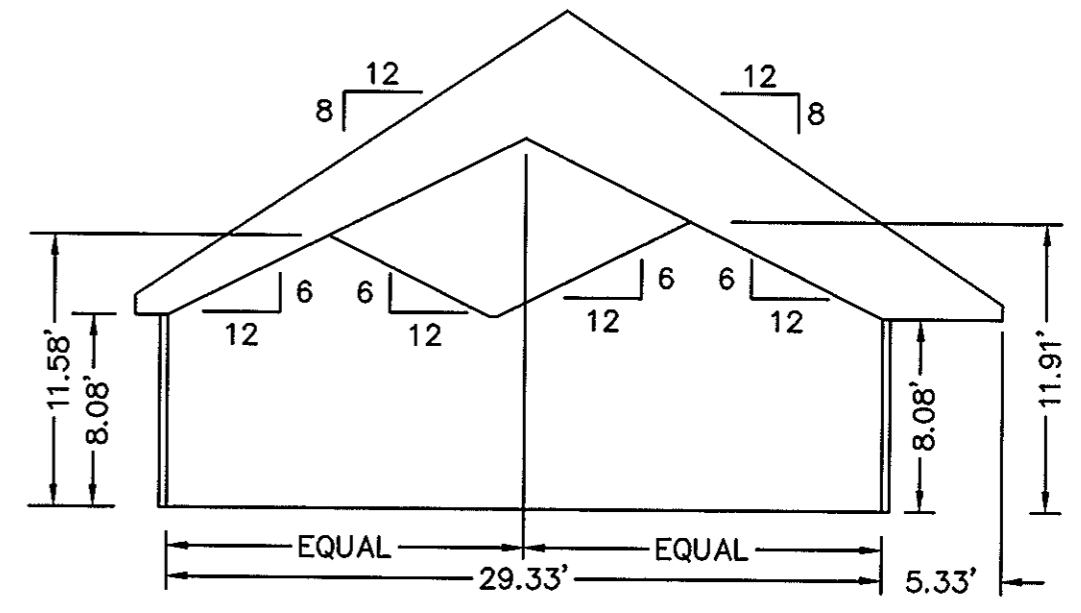
SECTION A-A



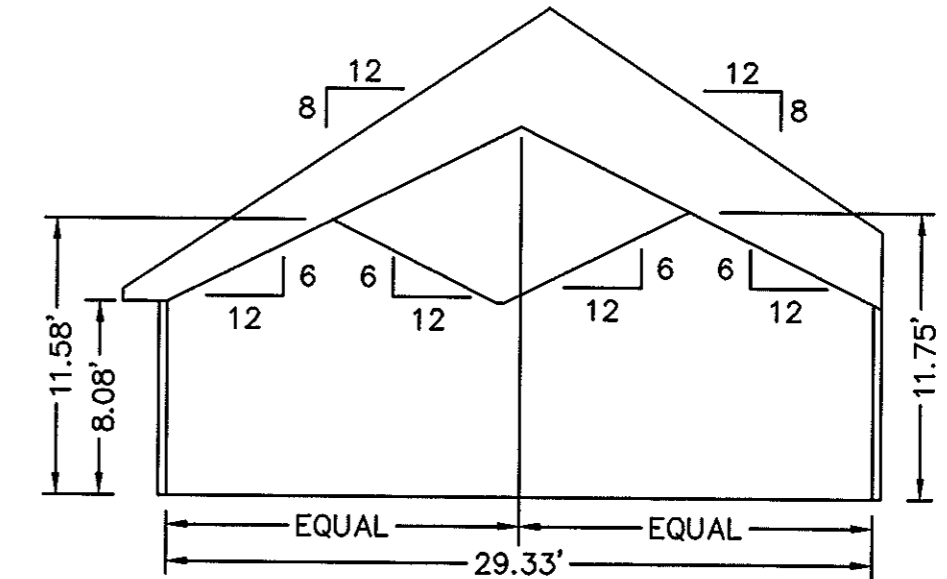
SECTION B-B
ENCLOSED PORCH



SECTION E-E



SECTION D-D



SECTION C-C

EXHIBIT "D"
PLAT OF
RAINBROOK VILLAS
A CONDOMINIUM
PHASE V
SHEET 3 OF 4
GRAFTON DISTRICT - COUNTY OF YORK, VIRGINIA
SCALE: 1/8" = 1'-0" FEBRUARY 5, 2001
0 4 8 16 24 36 FEET
GRAPHIC SCALE

THE SIRINE GROUP, LTD.
SURVEYORS • ENGINEERS • PLANNERS
4794 GEORGE WASHINGTON MEMORIAL HIGHWAY
U.S. ROUTE 17
P.O. BOX 450
WHITE MARSH, VIRGINIA 23183

APPROVED:
YORK COUNTY BOARD OF SUPERVISORS

BY: Al Maddalena

DATE: 2/27/01

NOTES:
1. ALL BUILDING DIMENSIONS SHOWN HEREON ARE INTERIOR DIMENSIONS AND ARE IN FEET.

STATE OF VIRGINIA
COUNTY OF YORK

IN THE CLERK'S OFFICE OF THE CIRCUIT COURT FOR THE COUNTY OF YORK THE 27th DAY OF Feb., 2001, THIS PLAT WAS PRESENTED AND ADMITTED TO RECORD AS THE LAW DIRECTS IN PLAT BOOK 13, PAGE 253.

TESTE: Lynn S. Jenkins
CLERK

BY: White D.C.