

LINE TABLE

NUMBER	DIRECTION	DISTANCE
L1	N 79°22'46" E (R)	31.07'
L2	N 34°53'39" E	22.78'
L3	N 33°32'45" W	25.00'

CURVE TABLE

NUMBER	RADIUS	LENGTH	DELTA	TANGENT	CHORD BEARING	CHORD
1	225.00	65.70	16°43'47"	33.08	N 84°00'26" E	65.46
2	25.00	35.09	80°24'21"	21.13	S 35°26'20" W	32.27
3	50.00	210.50	241°13'04"	-84.52	N 25°09'16" W	86.07
4	275.00	172.39	35°55'04"	89.14	S 74°24'47" W	169.58

SUBDIVISION OF

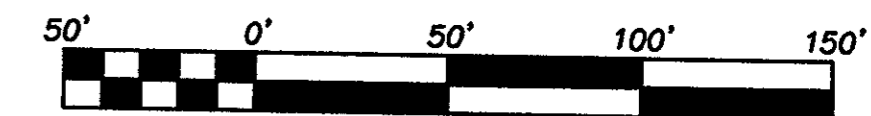
WILLIAMSBURG BLUFFS

SECTION I, PHASE 3

BRUTON MAGISTERIAL DISTRICT, YORK COUNTY, VIRGINIA

JULY 13, 2000

SHEET 2 OF 2



SCALE 1" = 50'

Rickmond Engineering, Inc.

Engineering Surveying Land Planning

1643 Merrimac Trail
Williamsburg, VA 23185
Voice: (757)229-1776
Fax: (757)229-4683

Vint Hill • P.O. Box 861647
Warrenton, VA 20187
Voice: (540)349-7730
Fax: (540)349-7731

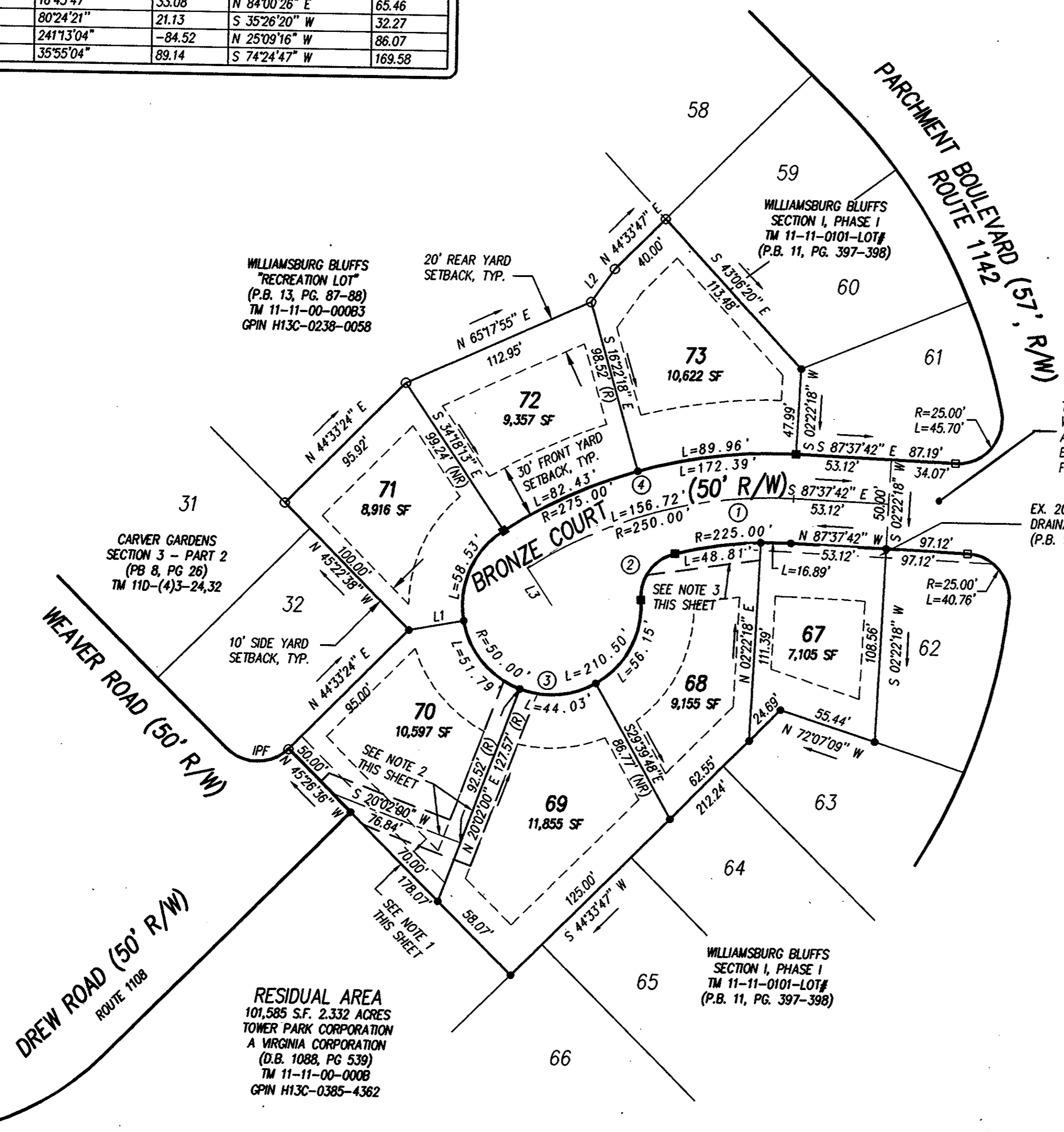
www.rickmond.com

Rickmond

NOTES:

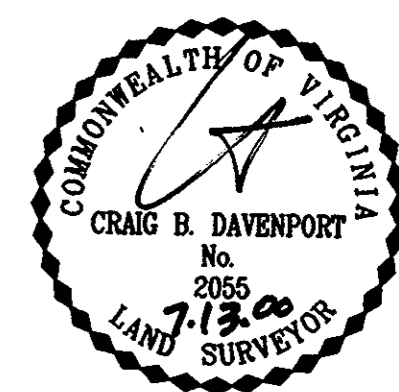
- 1) 10' RESTRICTED ACCESS EASEMENT HEREBY CONVEYED TO YORK COUNTY.
- 2) @ 20' UTILITY EASEMENT HEREBY CONVEYED TO YORK COUNTY.
- 3) VARIABLE WIDTH UTILITY EASEMENT 10' OFF SANITARY SEWER HEREBY CONVEYED TO YORK COUNTY.

PLAT BOOK 13, PAGE 87-88



THE EXISTING PORTION OF DREW ROAD WAS RENAMED BRONZE COURT THROUGH ADOPTION OF RESOLUTION NO. R01-5 BY THE BOARD OF SUPERVISORS ON FEBRUARY 6, 2001.

EX. 20' YORK COUNTY DRAINAGE & UTILITY EASEMENT (P.B. 11, PG. 397-398)



APPROVED: YORK COUNTY BOARD OF SUPERVISORS

BY: *Al Maddalena* DATE: *2/27/01*
PLAT APPROVING AGENT

STATE OF VIRGINIA
COUNTY OF YORK
IN THE CLERK'S OFFICE OF THE CIRCUIT COURT FOR THE COUNTY OF YORK THIS *6th*
DAY OF *March*, 2001, THIS MAP WAS PRESENTED AND ADMITTED TO RECORD
AS THE LAW DIRECTS IN PLAT BOOK *13* PAGE *257*

TESTE: *Lyran S. Jenkins*
CLERK

BY: *[Signature]*

RESIDUAL AREA
101,585 S.F. 2.332 ACRES
TOWER PARK CORPORATION
A VIRGINIA CORPORATION
(D.B. 1088, PG 539)
TM 11-11-00-0008
GPIN H13C-0385-4362

WILLIAMSBURG BLUFFS
SECTION I, PHASE I
TM 11-11-0101-LOT#
(P.B. 11, PG. 397-398)

SEE SHEET 1 FOR NOTES AND CERTIFICATIONS