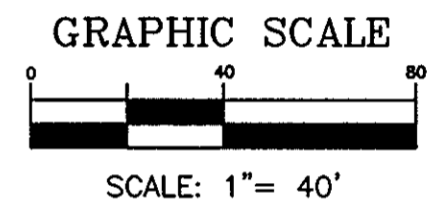


PLAT OF SUBDIVISION
VICTORY MEADOWS
 PHASE ONE
 BETHEL MAGISTERIAL DISTRICT
 COUNTY OF YORK, VIRGINIA

DATE: 01/23/01 SHEET 4 OF 4 SCALE: 1"=40'
 PROJECT NO: 30800.00 DRAWN BY: DWP

VHB Vanasse Hangen Brustlin, Inc.
 Transportation Land Development Environmental Services
 11832 Rock Landing Drive, Suite 203
 Newport News, Virginia 23606
 (757) 873-3386 • FAX (757) 873-0737



MATCH LINE - SEE SHEET 3

LINE DATA TABLE

NUMBER	BEARING	DISTANCE
L1	S 82°28'09" W	21.21'
L2	N 76°36'23" W	10.73'
L3	N 76°36'23" W	9.86'
L4	S 71°53'51" W	10.00'
L5	S 18°06'09" E	10.00'
L6	S 71°53'51" W	9.04'
L7	S 63°06'31" E	35.36'
L8	S 71°53'29" W	5.00'
L9	S 18°06'31" E	10.00'
L10	N 71°53'29" E	5.00'
L11	S 72°19'20" W	7.46'
L12	S 71°53'29" W	27.83'
L13	S 09°25'24" W	40.80'
L14	N 80°34'51" W	20.00'
L15	S 09°25'24" W	35.08'
L16	N 63°51'34" E	21.32'
L17	S 05°52'52" E	28.82'
L18	S 66°18'11" W	20.44'
L19	S 89°56'17" E	15.00'

CURVE DATA TABLE

NUMBER	RADIUS	DELTA	ARC LENGTH	TANGENT	CHORD	CHORD BEARING
C1	25.00'	66°55'34"	29.20'	16.52'	27.57'	S 38°25'42" W
C2	25.00'	49°30'26"	21.60'	11.53'	20.94'	N 83°21'18" W
C3	52.00'	279°00'53"	253.23'		67.53'	S 18°06'32" E
C4	52.00'	02°30'09"	2.27'	1.14'	2.27'	N 59°51'09" W
C5	52.00'	76°04'05"	69.04'	40.68'	64.08'	S 80°51'43" W
C6	52.00'	54°58'25"	49.89'	27.05'	48.00'	S 15°20'29" W
C7	52.00'	52°26'27"	47.59'	25.61'	45.95'	S 38°21'58" E
C8	52.00'	72°17'59"	65.62'	37.99'	61.35'	N 79°15'50" E
C9	52.00'	20°43'48"	18.81'	9.51'	18.71'	N 32°44'56" E
C10	25.00'	49°30'27"	21.60'	11.53'	20.94'	N 47°08'16" E
C11		NOT	USED			
C12	25.00'	90°00'00"	39.27'	25.00'	35.36'	S 26°53'29" W
C13	370.00'	20°19'08"	131.21'	66.30'	130.53'	S 61°43'55" W
C14	370.00'	04°03'22"	26.19'	13.10'	26.19'	S 69°51'48" W
C15	370.00'	13°25'45"	86.72'	43.56'	86.52'	S 61°07'15" W
C16	370.00'	02°50'01"	18.30'	9.15'	18.30'	S 52°59'22" W
C17	320.00'	15°24'44"	86.08'	43.30'	85.82'	S 59°16'43" W
C18	348.00'	02°33'22"	15.53'	7.76'	15.52'	N 65°42'24" E
C19	370.00'	15°24'44"	99.53'	50.07'	99.23'	N 59°16'43" E
C20	370.00'	14°12'19"	91.73'	46.10'	91.50'	N 59°52'55" E
C21	370.00'	01°12'25"	7.79'	3.90'	7.79'	N 52°10'34" E
C22	320.00'	20°19'08"	113.48'	57.34'	112.89'	N 61°43'55" E
C23	320.00'	13°19'54"	74.46'	37.40'	74.29'	N 58°14'18" E
C24	320.00'	06°59'14"	39.02'	19.54'	39.00'	N 68°23'52" E
C25	25.00'	90°00'00"	39.27'	25.00'	35.36'	S 63°06'31" E
C26	40.00'	180°00'00"	125.66'	0.00'	80.00'	S 12°29'27" E
C27	345.00'	20°19'08"	122.35'	61.82'	121.71'	S 61°43'55" W
C28	345.00'	15°24'45"	92.80'	46.68'	92.52'	S 59°16'43" W
C29	373.00'	01°11'16"	7.73'	3.87'	7.73'	N 66°23'27" E
C30	52.00'	47°51'18"	43.43'	23.07'	42.18'	N 29°09'29" W
C31	52.00'	23°04'31"	20.94'	10.62'	20.80'	N 64°37'24" W

YORK COLONY
 COMMON AREA
 P.B. 12, PG. 556-559
 TAX MAP NO 38-15-A

YORK COLONY
 COMMON AREA
 P.B. 12, PG. 556-559
 TAX MAP NO 38-15-A

PHASE TWO
 (FUTURE DEVELOPMENT)
 NOW OR FORMERLY
 VICTORY MEADOWS, L.L.C.
 INSTRUMENT NO 000001891, PG. 54
 TAX PARCEL NO. 38-78
 GPIN V03B-3307-4900

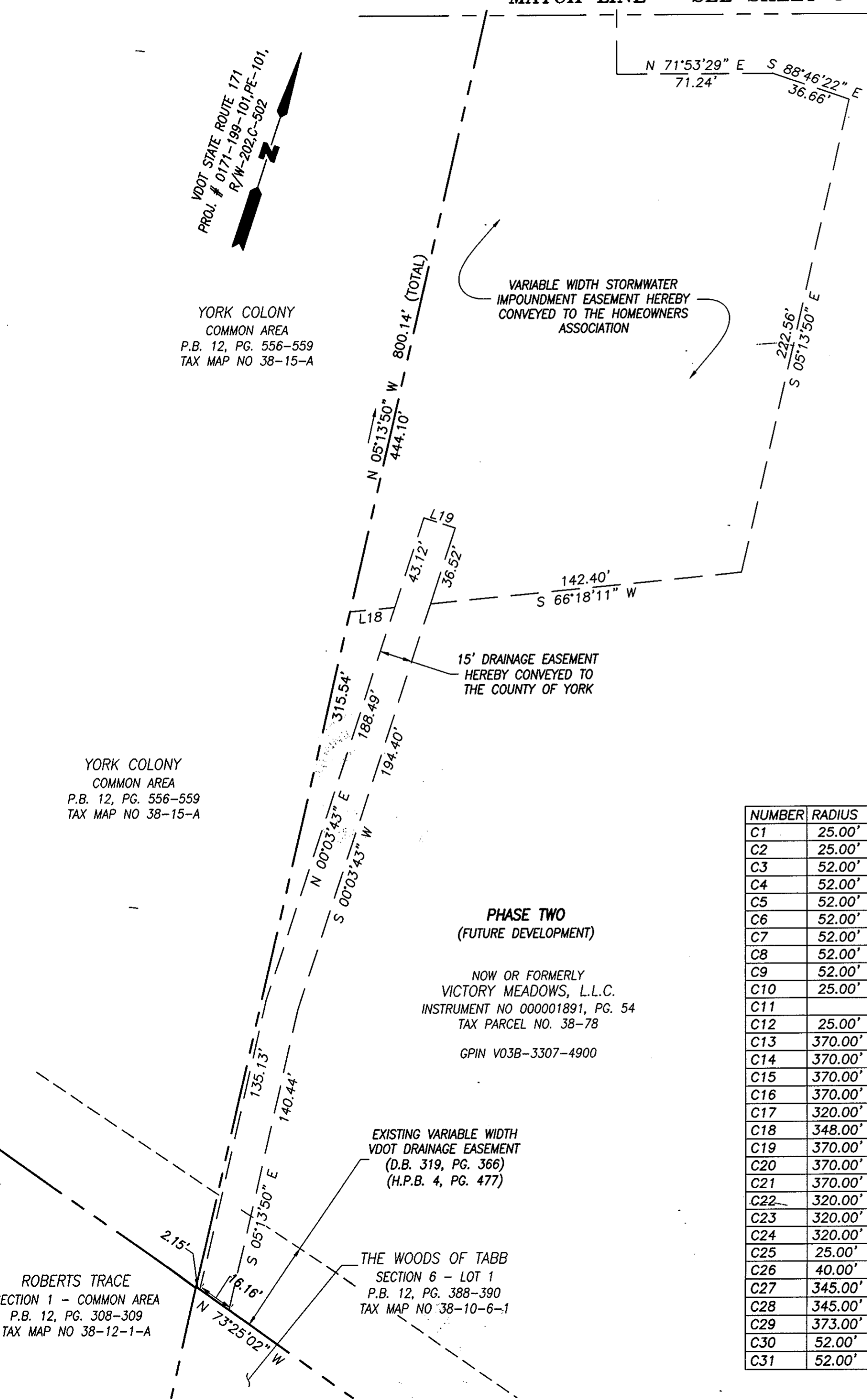
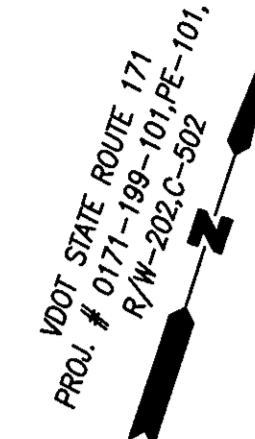
EXISTING VARIABLE WIDTH
 VDOT DRAINAGE EASEMENT
 (D.B. 319, PG. 366)
 (H.P.B. 4, PG. 477)

THE WOODS OF TABB
 SECTION 6 - LOT 1
 P.B. 12, PG. 388-390
 TAX MAP NO 38-10-6-1

ROBERTS TRACE
 SECTION 1 - COMMON AREA
 P.B. 12, PG. 308-309
 TAX MAP NO 38-12-1-A

VARIABLE WIDTH STORMWATER
 IMPOUNDMENT EASEMENT HEREBY
 CONVEYED TO THE HOMEOWNERS
 ASSOCIATION

15' DRAINAGE EASEMENT
 HEREBY CONVEYED TO
 THE COUNTY OF YORK



APPROVED:
 YORK COUNTY BOARD OF SUPERVISORS

BY: Al. Maddalena
 PLAT APPROVING AGENT

DATE: 3/6/01

STATE OF VIRGINIA
 COUNTY OF YORK

IN THE CLERK'S OFFICE OF THE CIRCUIT COURT FOR
 THE COUNTY OF YORK, THE 6th DAY OF March, 2001.
 THIS MAP WAS PRESENTED AND ADMITTED TO RECORD AS
 THE LAW DIRECTS IN PLAT BOOK 13, PAGE 261.

TESTE: Lynn S. Jenkins 3:50
 CLERK

BY: [Signature]