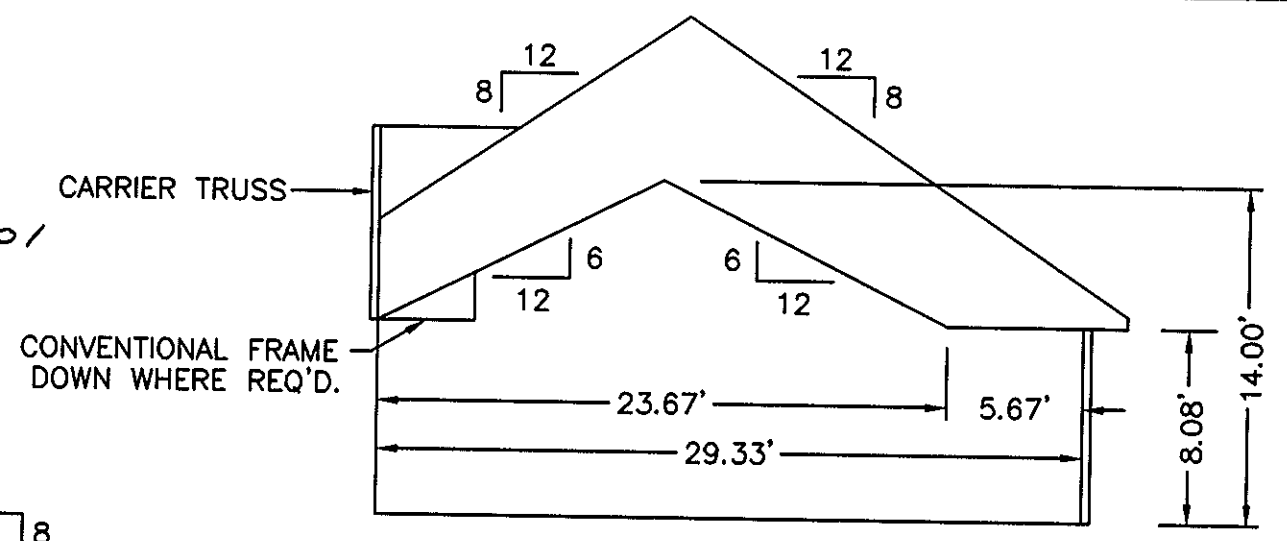
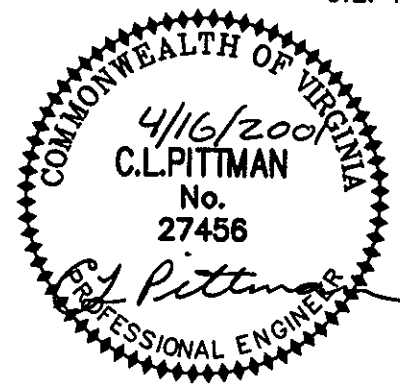
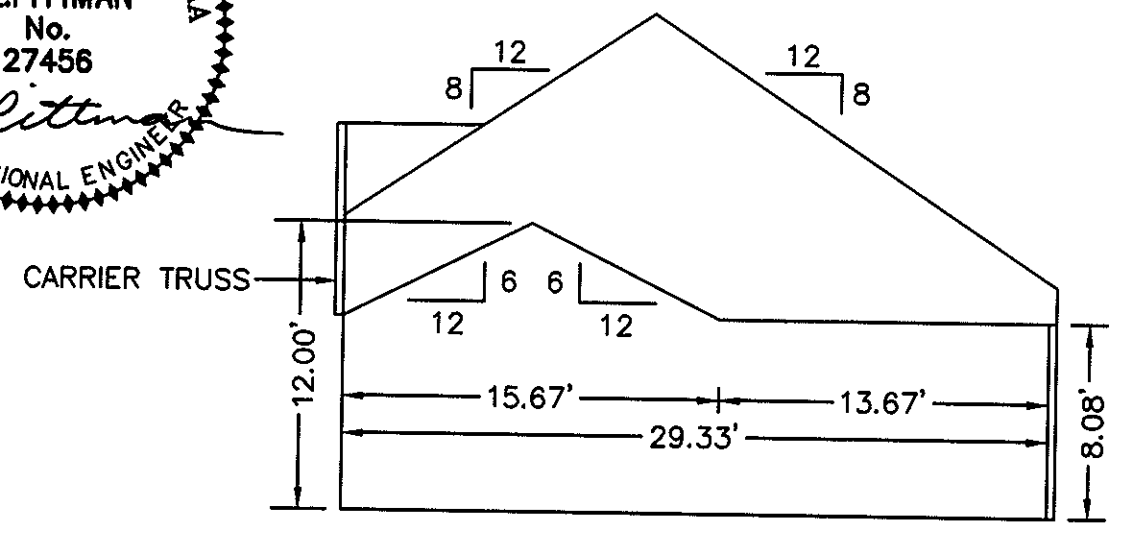


THE UNDERSIGNED CERTIFIES THAT THIS PLAN IS ACCURATE AND COMPLIES WITH THE PROVISIONS OF THE CODE OF VIRGINIA SECTION 55-79.58 (b) AND ALL UNITS DEPICTED HEREON HAVE BEEN SUBSTANTIALLY COMPLETED.

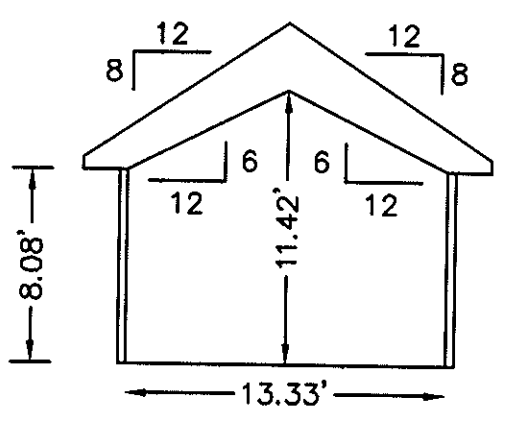
SIGNED: *C.L. Pittman* DATE: *4/16/2001*
C.L. PITTMAN, P.E.



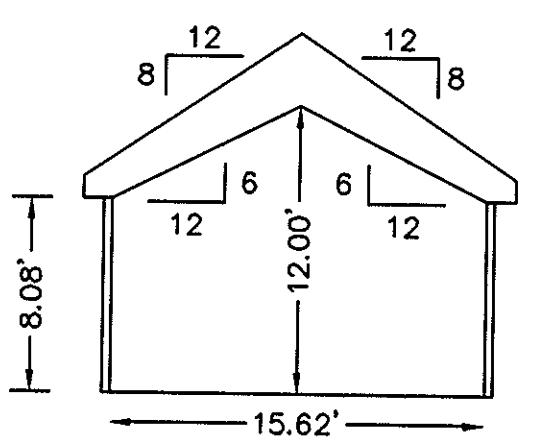
SECTION F-F



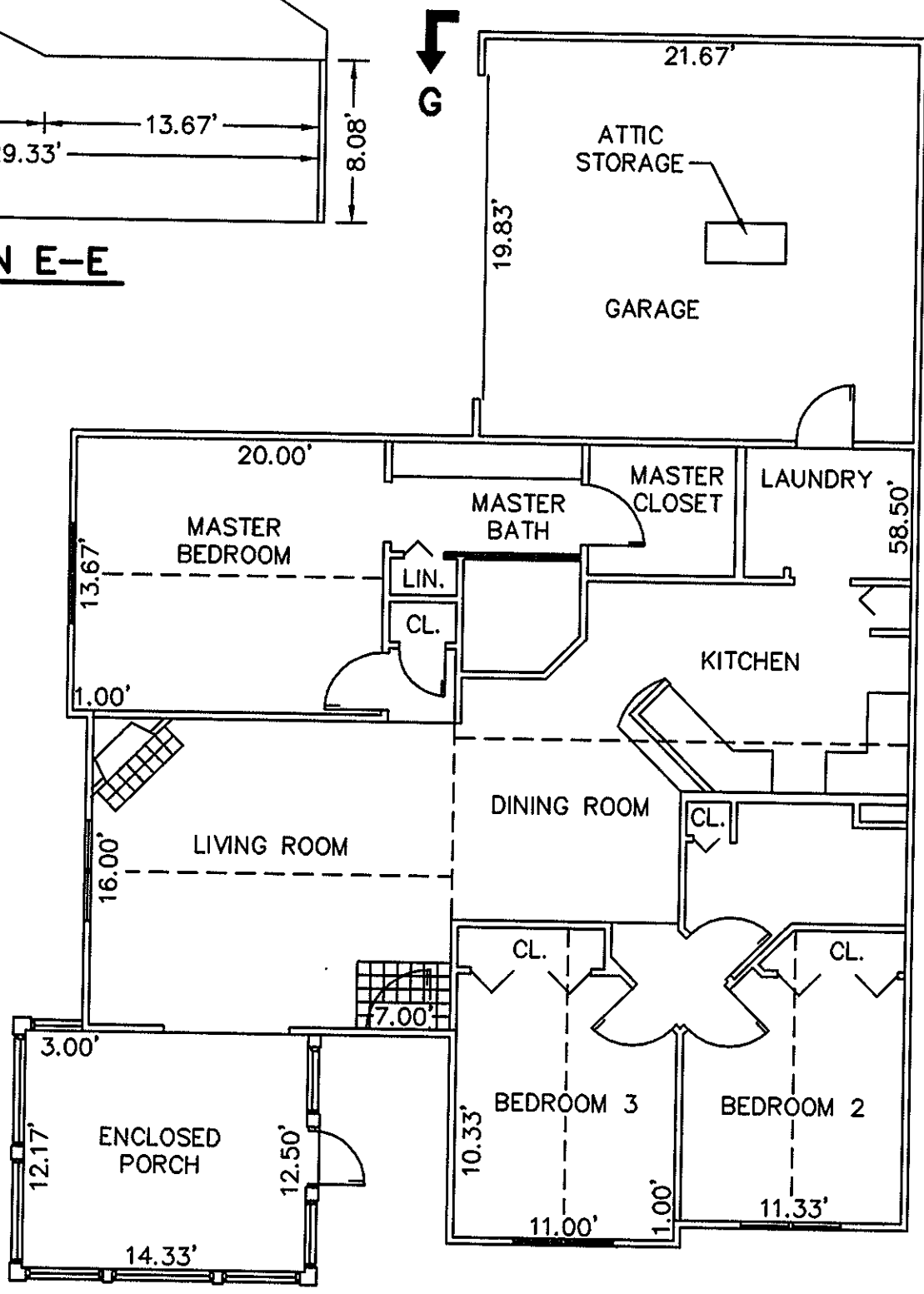
SECTION E-E



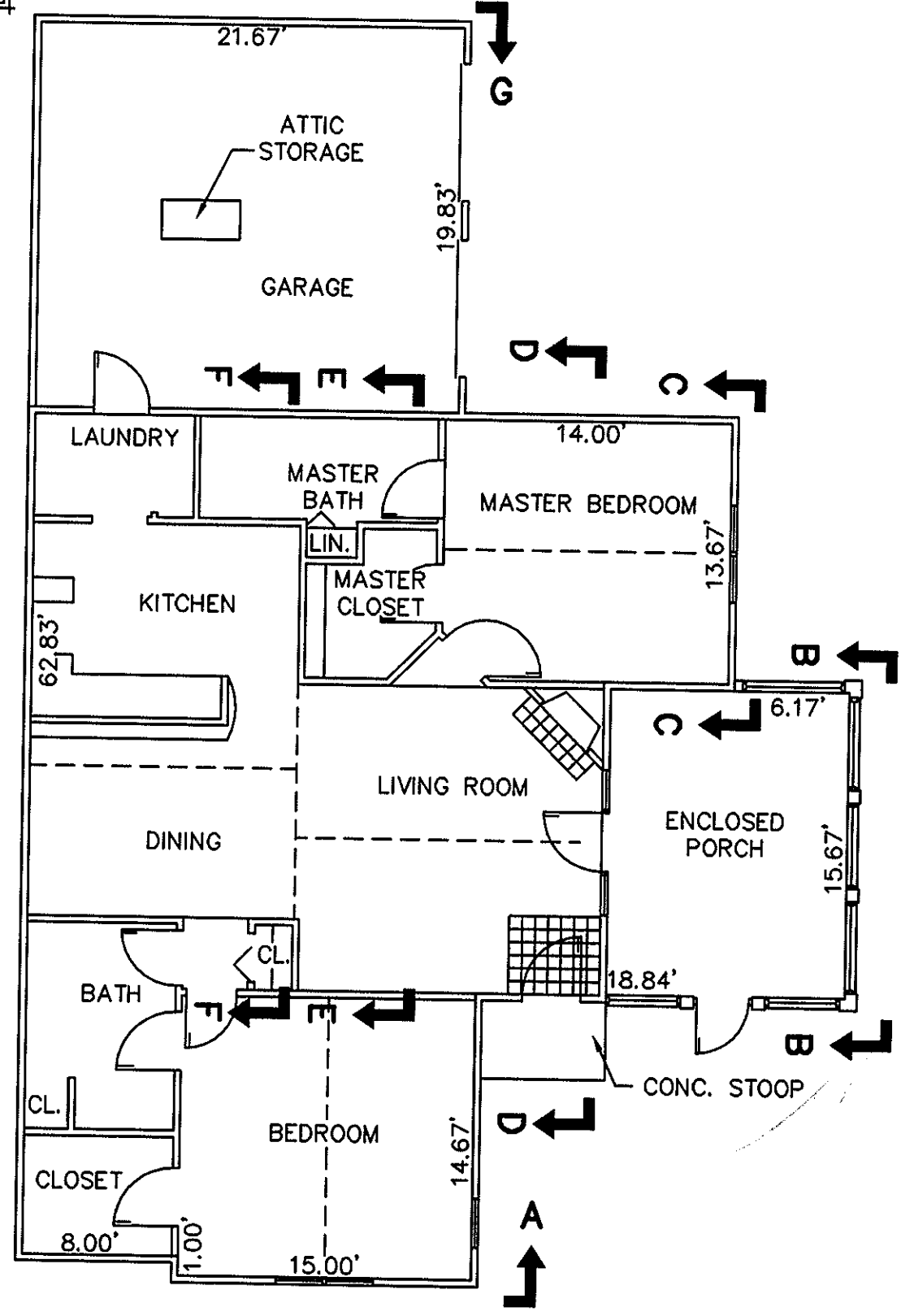
SECTION C-C



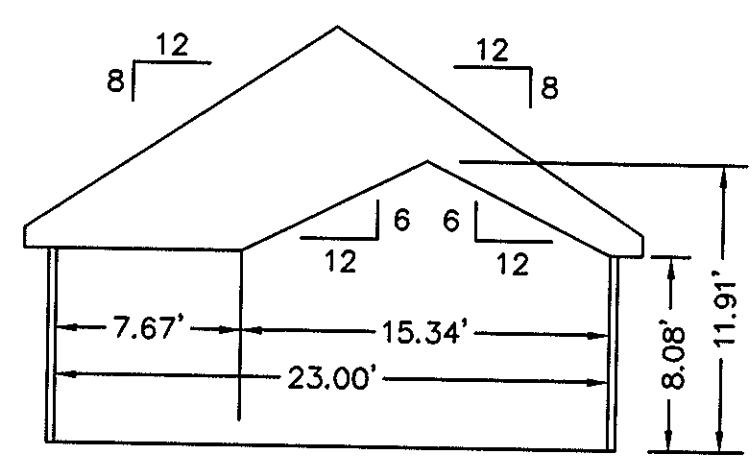
SECTION B-B
ENCLOSED PORCH



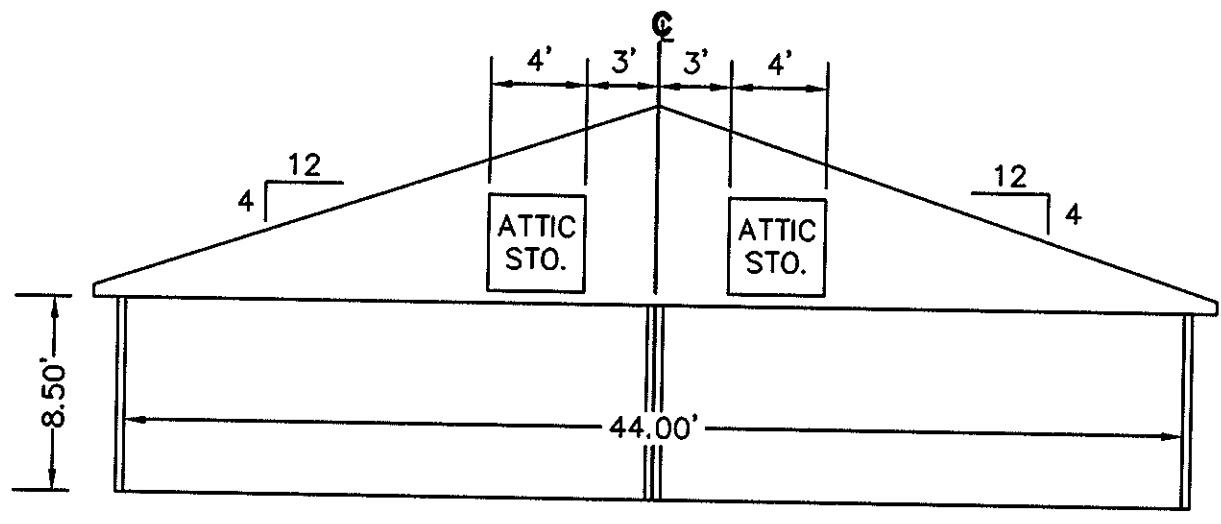
BUILDING 20-1 & 20-3 - CANTERBURY
FLOOR PLAN
W/ ENCLOSED PORCH



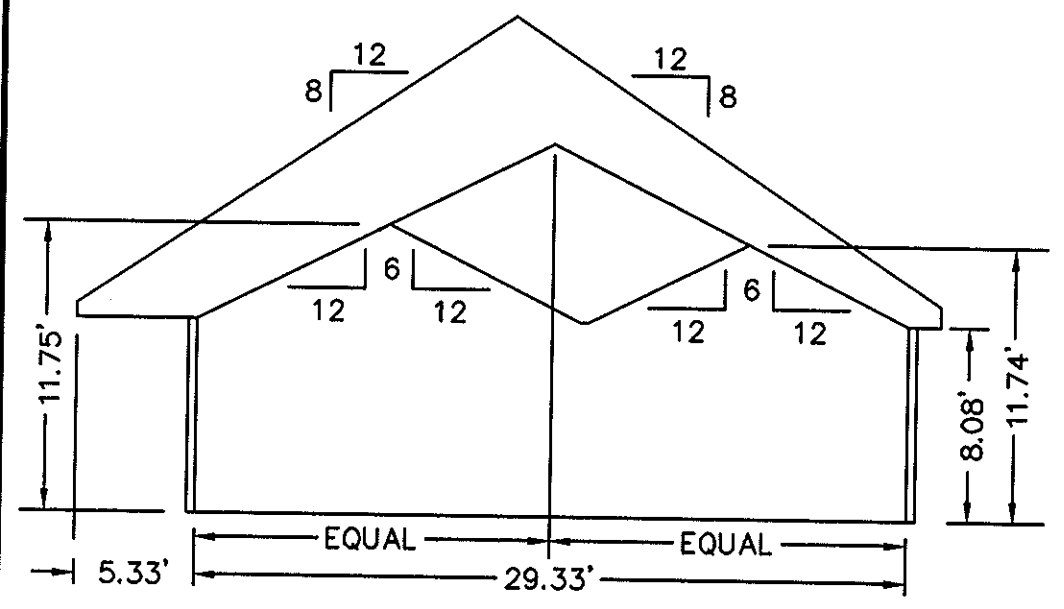
BUILDING 20-2 & 20-4 - ABBEY
FLOOR PLAN
W/ ENCLOSED PORCH



SECTION A-A



SECTION G-G
GARAGE

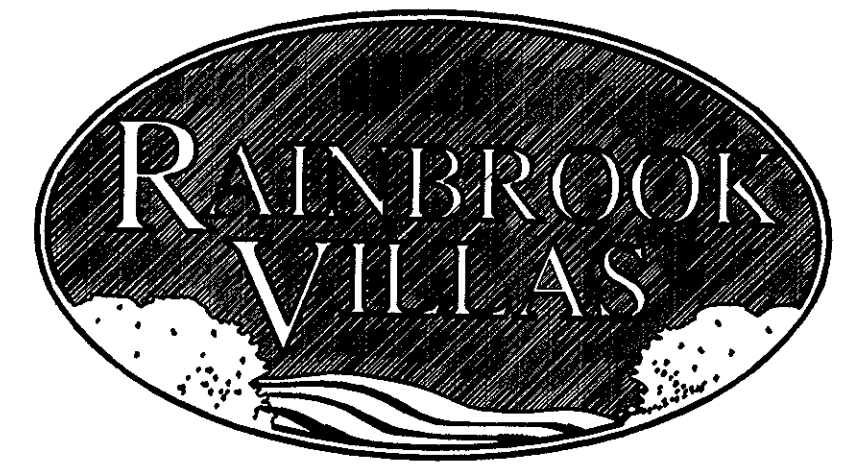


SECTION D-D

EXHIBIT "D"
PLAT OF
RAINBROOK VILLAS
A CONDOMINIUM
PHASE VII

SHEET 4 OF 4
GRAFTON DISTRICT - COUNTY OF YORK, VIRGINIA
SCALE: 1/8" = 1'-0" MARCH 15, 2001
0 4 8 16 24 36 FEET
GRAPHIC SCALE

THE SIRINE GROUP, LTD.
SURVEYORS • ENGINEERS • PLANNERS
4794 GEORGE WASHINGTON MEMORIAL HIGHWAY
U.S. ROUTE 17
P.O. BOX 450
WHITE MARSH, VIRGINIA 23183



APPROVED:
YORK COUNTY BOARD OF SUPERVISORS

BY: *Al Maddalena*

DATE: *April 16, 2001*

NOTES:
1. ALL BUILDING DIMENSIONS SHOWN HEREON ARE INTERIOR DIMENSIONS AND ARE IN FEET.
STATE OF VIRGINIA
COUNTY OF YORK
IN THE CLERK'S OFFICE OF THE CIRCUIT COURT FOR THE COUNTY OF YORK THE 16 DAY OF April, 2001, THIS PLAT WAS PRESENTED AND ADMITTED TO RECORD AS THE LAW DIRECTS IN PLAT BOOK 13, PAGE 282.

TESTE: *Lynn S Jenkins*
CLERK

BY: *Lupia A Bliss*