

SUBDIVISION

OF THE
PROPERTY OF BREEZY POINT LAND TRUST
AND BOUNDARY LINE AGREEMENT WITH THE
PROPERTY OF THE NORMAN T. AND
BEVERLY A. MONK REVOCABLE LIVING TRUST

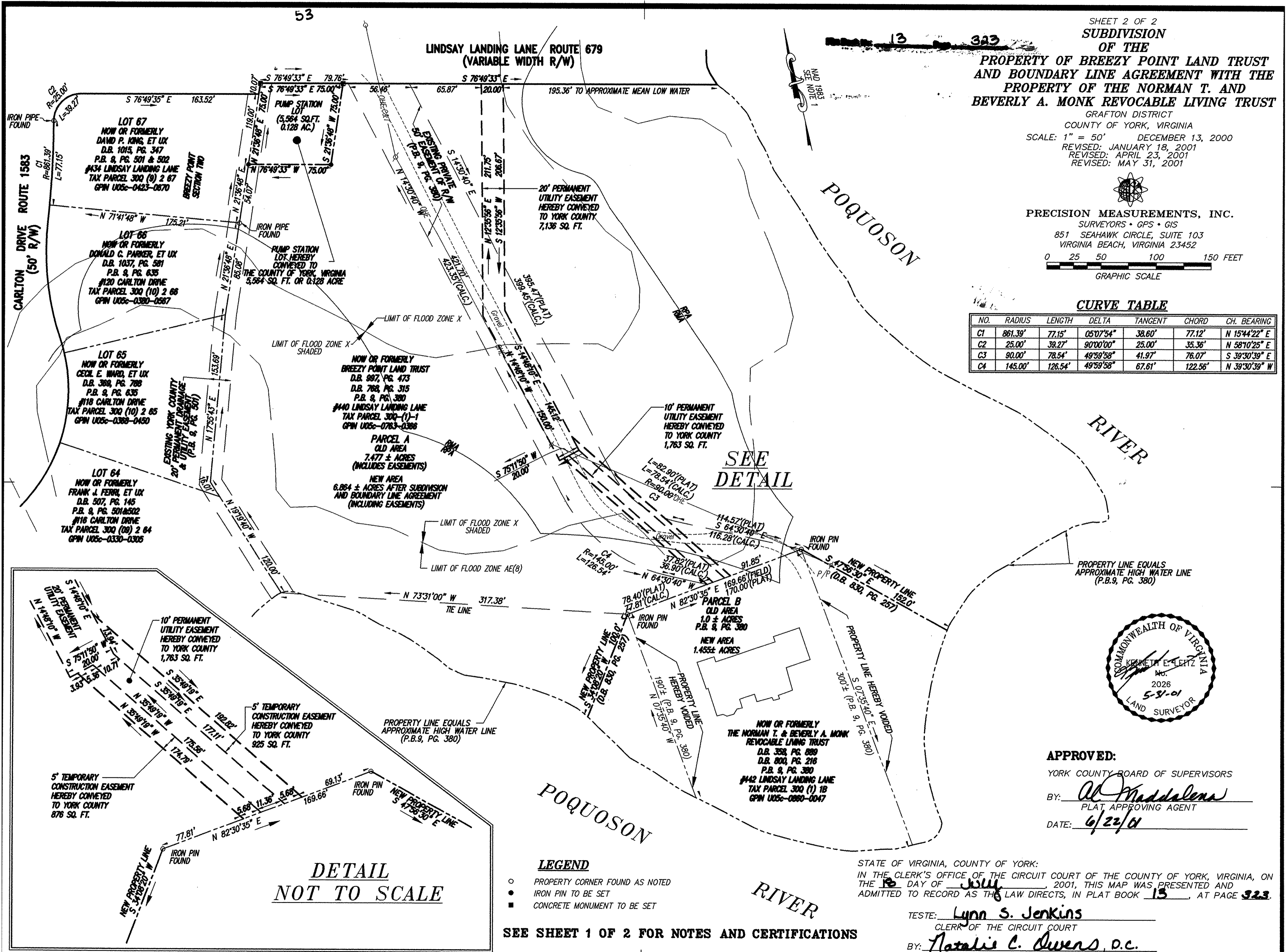
GRAFTON DISTRICT
COUNTY OF YORK, VIRGINIA
SCALE: 1" = 50' DECEMBER 13, 2000
REVISED: JANUARY 18, 2001
REVISED: APRIL 23, 2001
REVISED: MAY 31, 2001



PRECISION MEASUREMENTS, INC.
SURVEYORS • GPS • GIS
851 SEAHAWK CIRCLE, SUITE 103
VIRGINIA BEACH, VIRGINIA 23452
0 25 50 100 150 FEET
GRAPHIC SCALE

CURVE TABLE

NO.	RADIUS	LENGTH	DELTA	TANGENT	CHORD	CH. BEARING
C1	861.39'	77.15'	05°07'54"	38.60'	77.12'	N 15°44'22" E
C2	25.00'	39.27'	90°00'00"	25.00'	35.36'	N 58°10'25" E
C3	90.00'	78.54'	49°59'58"	41.97'	76.07'	S 39°30'39" E
C4	145.00'	126.54'	49°59'58"	67.61'	122.56'	N 39°30'39" W



SEE
DETAIL

DETAIL
NOT TO SCALE

LEGEND

- PROPERTY CORNER FOUND AS NOTED
- IRON PIN TO BE SET
- CONCRETE MONUMENT TO BE SET

SEE SHEET 1 OF 2 FOR NOTES AND CERTIFICATIONS



APPROVED:

YORK COUNTY BOARD OF SUPERVISORS

BY: *Al Maddalena*
PLAT APPROVING AGENT

DATE: 6/22/01

STATE OF VIRGINIA, COUNTY OF YORK:
IN THE CLERK'S OFFICE OF THE CIRCUIT COURT OF THE COUNTY OF YORK, VIRGINIA, ON
THE 16 DAY OF July, 2001, THIS MAP WAS PRESENTED AND
ADMITTED TO RECORD AS THE LAW DIRECTS, IN PLAT BOOK 13, AT PAGE 323.

TESTE: Lynn S. Jenkins
CLERK OF THE CIRCUIT COURT

BY: Natalie C. Owens, D.C.