

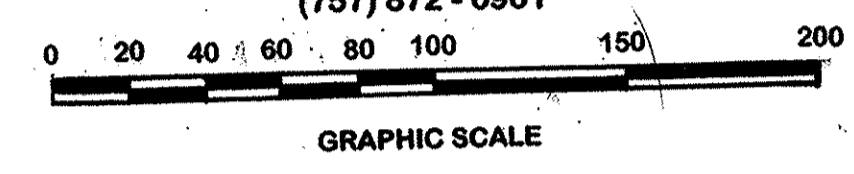
# SUBDIVISION PLAT OF GRAND OAKS

NELSON MAGISTERIAL DISTRICT  
COUNTY OF YORK, VIRGINIA

Scale: 1" = 50' Date: MARCH 26, 2001  
REVISED JUL 6, 2001

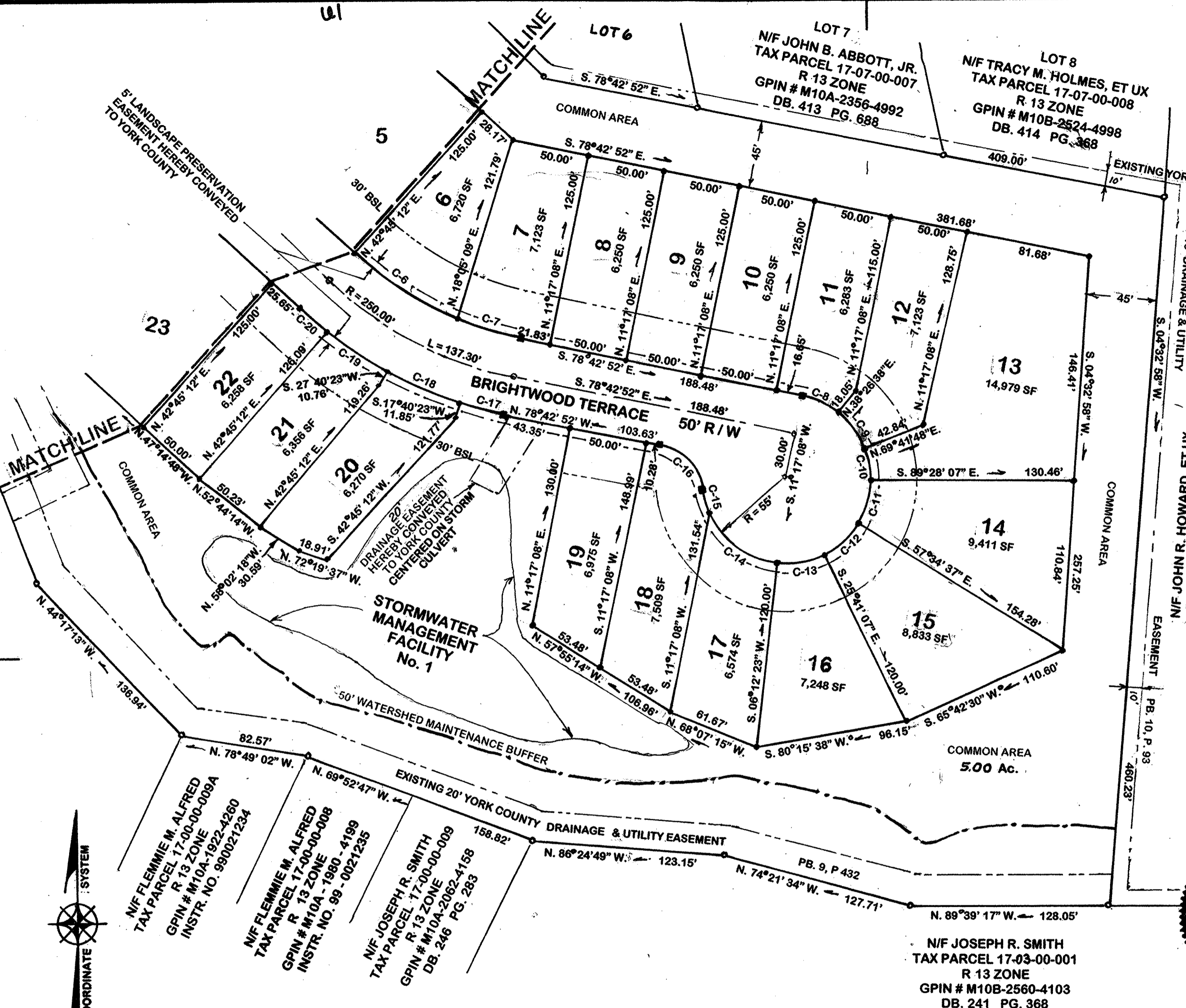
## SHEET 3 OF 3

PENINSULA ENGINEERING & SURVEYING  
727 KEPPEL DRIVE  
NEWPORT NEWS, VIRGINIA 23608  
(757) 872-0901



### SYMBOLS

- DENOTES MINIMUM BUILDING SETBACK LINE
- DENOTES DRAINAGE EASEMENT OR UTILITY EASEMENT HEREBY CONVEYED TO COUNTY OF YORK
- DENOTES IRON PIPE FOUND
- DENOTES IRON ROD TO BE SET AT ALL PROPERTY LINE JUNCTURES
- DENOTES CONCRETE MONUMENT FOUND
- DENOTES CONCRETE MONUMENT TO BE SET



**APPROVED**  
YORK COUNTY BOARD OF SUPERVISORS

BY: *Al Maddalena*  
PLAT APPROVING AGENT

DATE: 8/10/01



N/F JOSEPH R. SMITH  
TAX PARCEL 17-03-00-001  
R 13 ZONE  
GPIN # M10B-2560-4103  
DB. 241 PG. 368

### CURVE TABLE

NO.	RAD.	DELTA	ARC	CHD.	CHD. BRG.	TAN.
C6	225.00	20°37'02"	80.96	80.53	S.57°30'23"E.	40.92
C7	225.00	10°54'42"	42.85	42.79	S.73°15'38"E.	21.49
C8	55.00	27°09'44"	26.07	25.83	S.65°08'49"E.	13.29
C9	55.00	31°15'12"	30.00	29.63	S.35°55'28"E.	15.38
C10	55.00	20°50'09"	20.00	19.89	S.09°51'50"E.	15.89
C11	55.00	31°53'25"	30.61	30.22	S.16°28'05"W.	15.71
C12	55.00	31°53'19"	30.61	30.22	S.48°22'17"W.	15.71
C13	55.00	31°52'57"	30.61	30.22	S.80°15'38"W.	15.71
C14	55.00	60°13'00"	57.80	55.18	N.53°40'51"W.	31.89
C15	55.00	15°23'34"	14.78	14.73	N.15°51'31"W.	7.43
C16	35.00	70°31'20"	43.08	40.41	N.43°27'12"W.	24.75
C17	275.00	06°23'06"	30.65	30.63	N.75°15'19"W.	15.34
C18	275.00	09°59'55"	48.00	47.93	N.67°25'40"W.	24.06
C19	275.00	10°00'04"	48.00	47.93	N.57°22'50"W.	24.06
C20	275.00	05°04'47"	24.38	24.37	N.49°48'35"W.	12.20

STATE OF VIRGINIA  
COUNTY OF YORK  
IN THE CLERK'S OFFICE OF THE CIRCUIT  
COURT FOR THE COUNTY OF YORK THIS 10  
DAY OF August, 2001, THIS MAP WAS  
PRESENTED AND ADMITTED TO RECORD AS  
THE LAW DIRECTS IN PLAT BOOK 13,  
PAGE 340

TESTE: *Lynn Jenkins* CLERK  
BY: *Natalie C. Owens*

