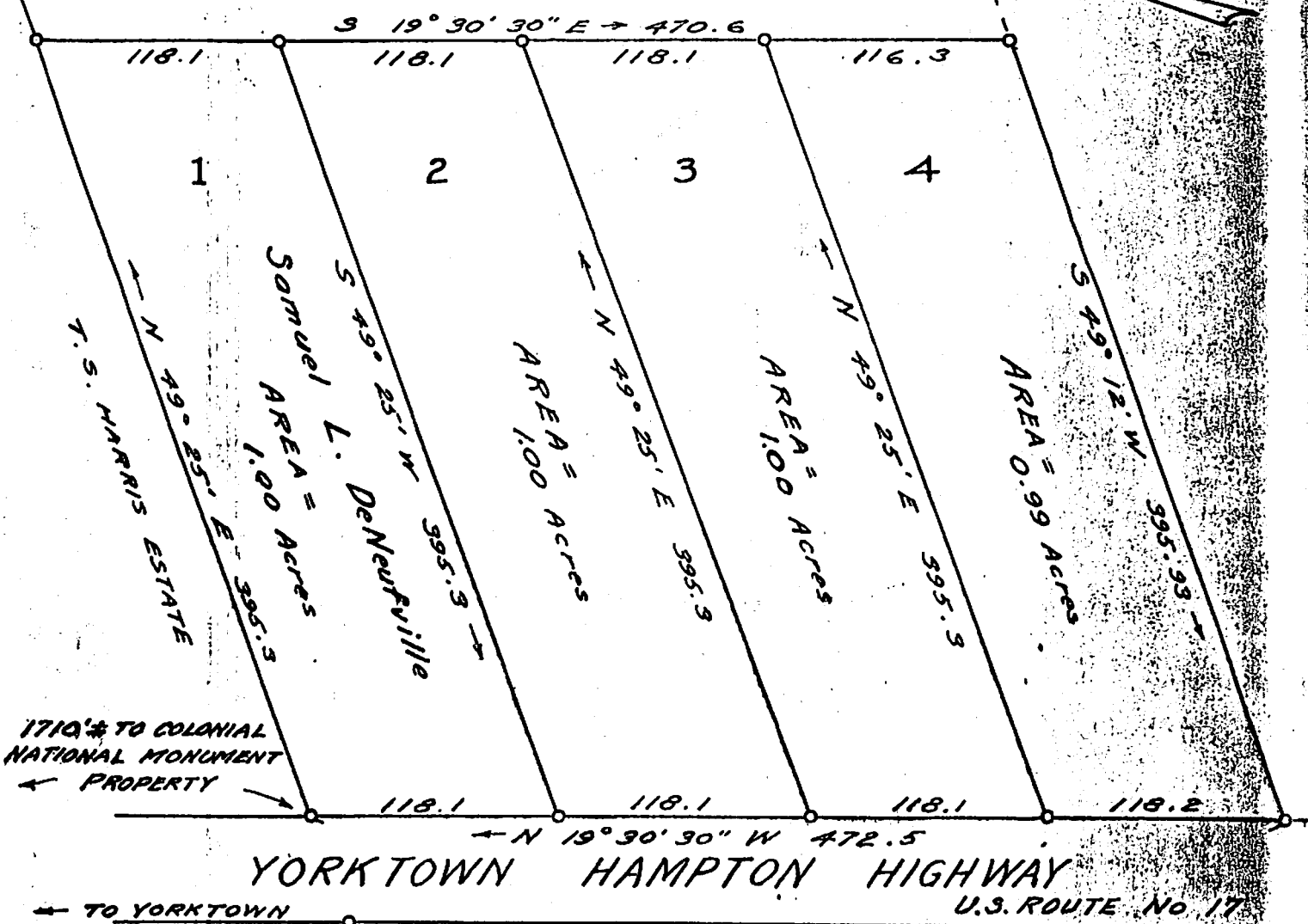


NOW OR FORMERLY AMERICAN CEMENT ENGINEERING CO.



MAP SHOWING SUBDIVISION OF A PORTION OF 405.8 ACRES OF LAND SITUATED ON THE YORKTOWN-HAMPTON HIGHWAY ADJACENT TO THE YORKTOWN BATTLEFIELD AREA-COLONIAL NATIONAL MONUMENT, YORK COUNTY, VA.

10/27/1936



NB 113 P. 29
 NB 125 P. 51
 FBP 161