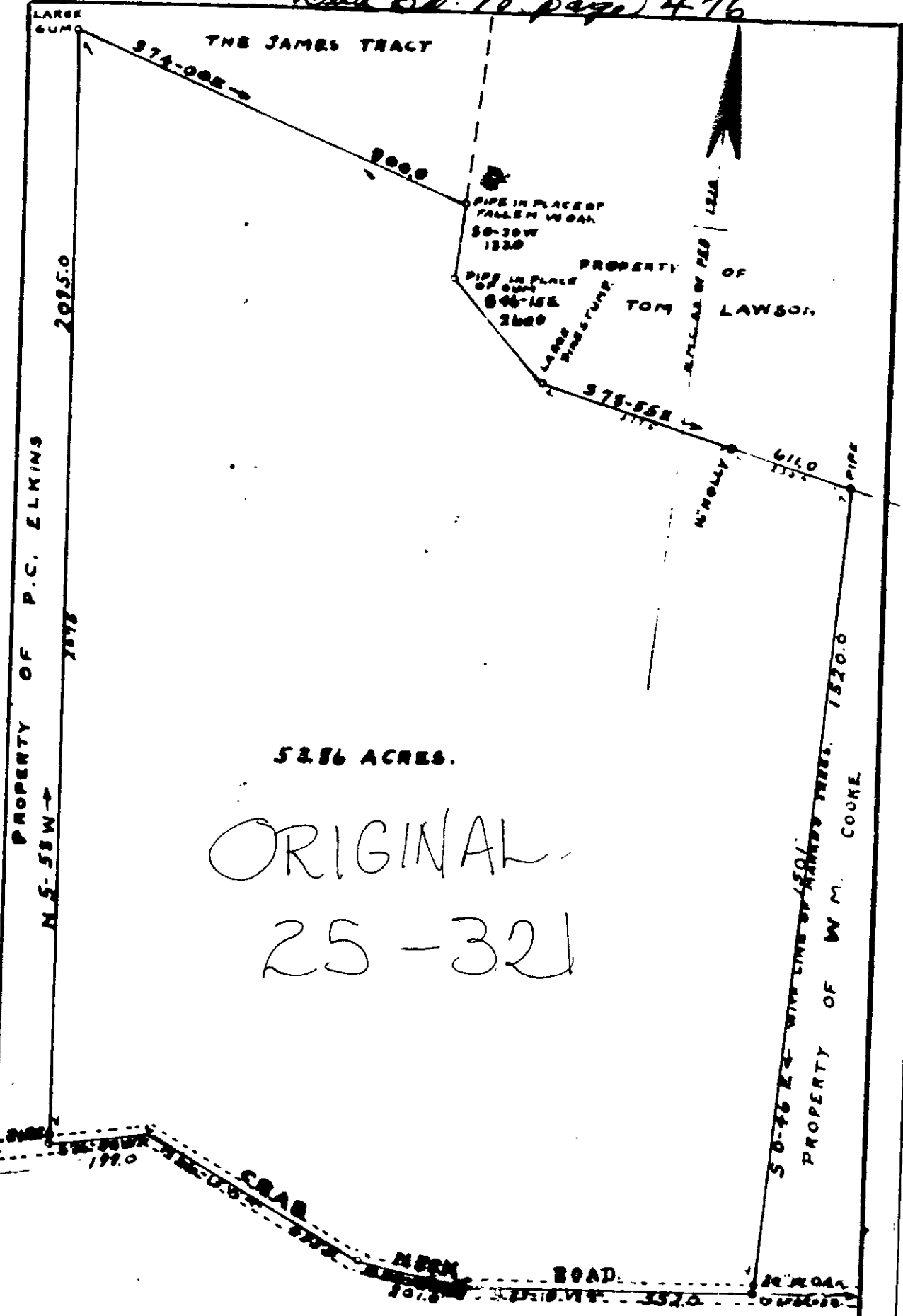


Deed Bl. 71 page 476



ORIGINAL
25-321

PLAT. SHOWING A TRACT OF LAND, SITUATE IN THE
 BRADFORD DISTRICT OF YORK COUNTY VIRGINIA, AS PURCHASED
 FROM THE ESTATE OF F. L. E. HOGGE, BY WIATT Y. CRANDOL
 SCALE 1" = 200'
 AUGUST 22, 1968
 NOTE, THIS IS PART OF THE ASKEE TRACT.

W. Cochran
 SURVEYOR AND BUSINESS