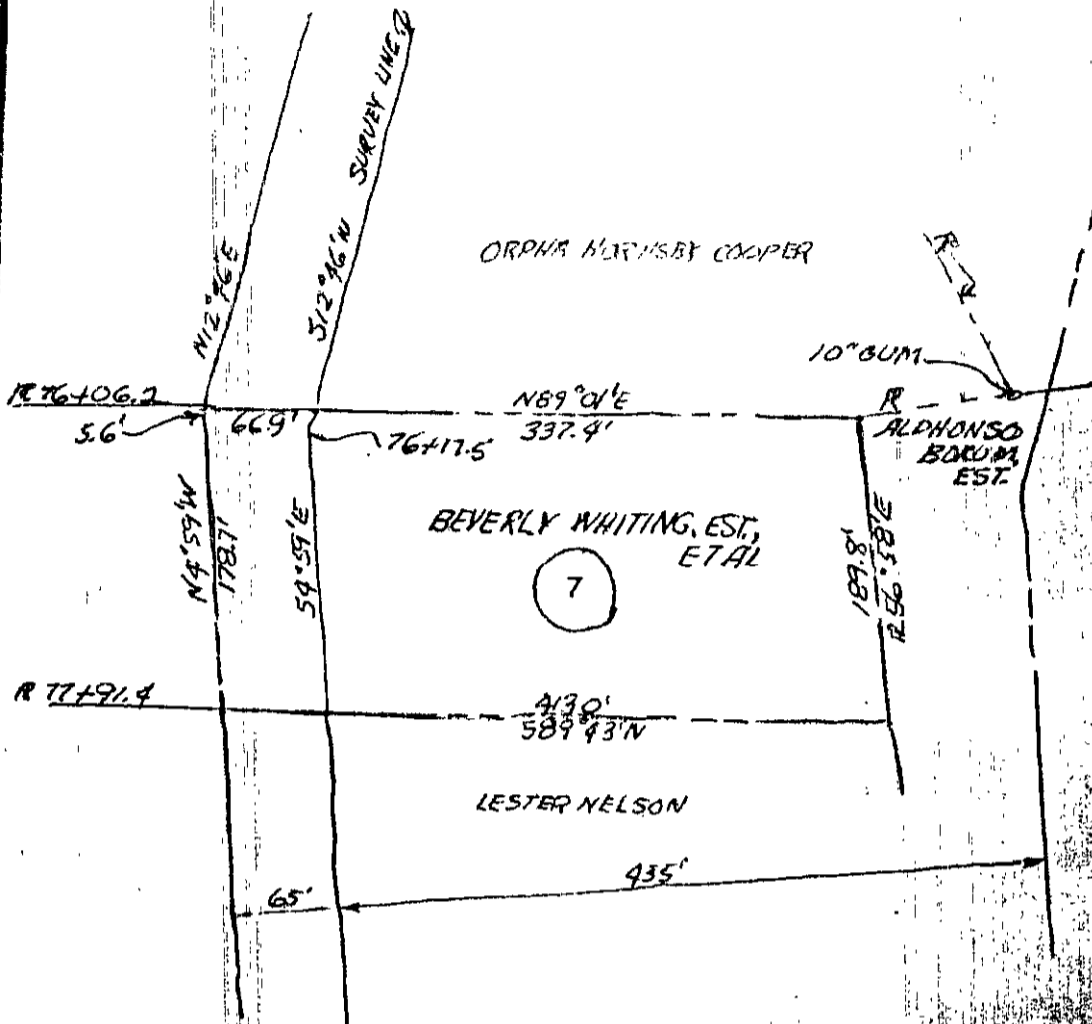


DB 101-425

425



VIRGINIA ELECTRIC AND POWER CO.	
CHESTERFIELD PENINSULA LOOPS TO YORKTOWN	
TRANSMISSION LINE	
PLAT TO ACCENT ANY RIGHT OF WAY	
BEVERLY WHITING	
DISTRICT	COUNTY
SWIFTON	NOVA
SCALE 1 INCH = 100 FT.	
DATE	APPROVED BY
MAY 20, 1955	STEEL & BRONZE

197

VIRGINIA ELECTRIC AND POWER CO.

24-264A-501

MAY 20, 1955

24-264A

VERCO
R/W